

TERA®-MAX® Patch Panels

TERA-MAX 19 inch patch panels provide outstanding performance and reliability in a shielded, high-density modular solution. As outlets are snapped into place, resilient ground tabs assure that each outlet is properly grounded. No secondary outlet grounding operations are required, reducing overall installation time.

Angled TERA-MAX

Allows direct routing of cables to vertical managers, eliminating the need for horizontal cable managers



Standard Fit

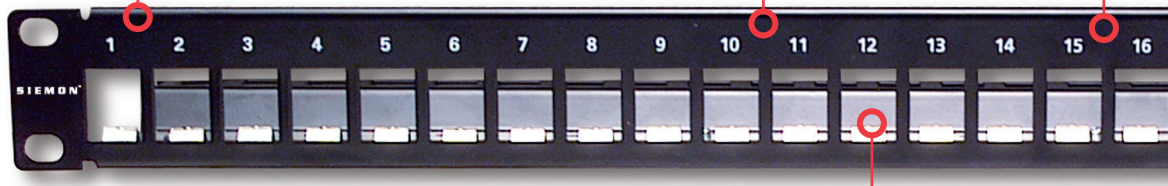
Panels can be mounted directly on standard 19 inch relay rack or cabinet

Port Identification

Bold port numbering enables quick identification of outlets

Durable

High strength steel with black or metallic finish

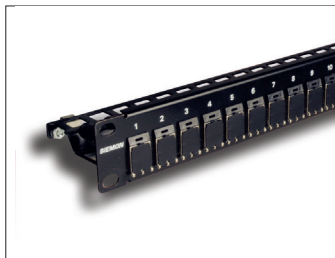


Installation Friendly

Individual modules snap into place, providing integrated grounding without additional steps



Integral rear cable manager facilitates the orderly routing of horizontal cables as well as maintaining proper bend radius for optimum performance.



Use TERA outlets in TERA-MAX patch panel for telecommunications room applications.



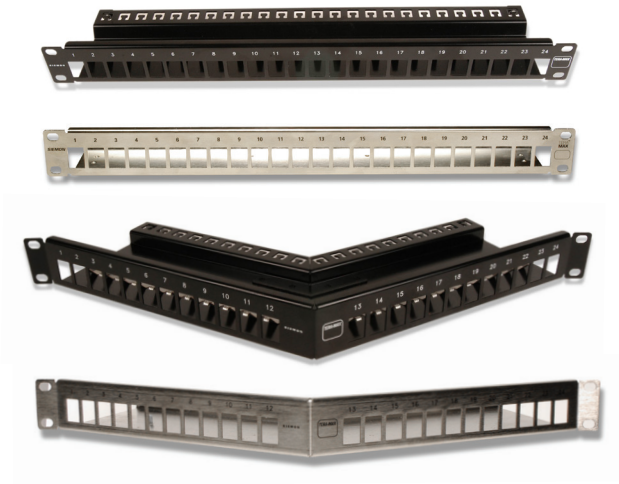
Panels feature integrated grounding via resilient ground tabs engaged during module insertion.

Product Information

TERA®-MAX® Patch Panels

Part Number	Description
TM-PNLZ-24-01	24-Port flat TERA-MAX panel, 1U, black
TM-PNLZ-24	24-Port flat TERA-MAX panel, 1U, metallic
TM-PNLZA-24-01	24-Port angled TERA-MAX panel, 1U, black
TM-PNLZA-24	24-Port angled TERA-MAX panel, 1U, metallic
PNLA-CVR-01	Angled panel cover, black

Panels include designation labels, cable ties and mounting hardware.
Note: 1U = 44.5mm (1.75 in.)



Because we continuously improve our products, Siemon reserves the right to change specifications and availability without prior notice.