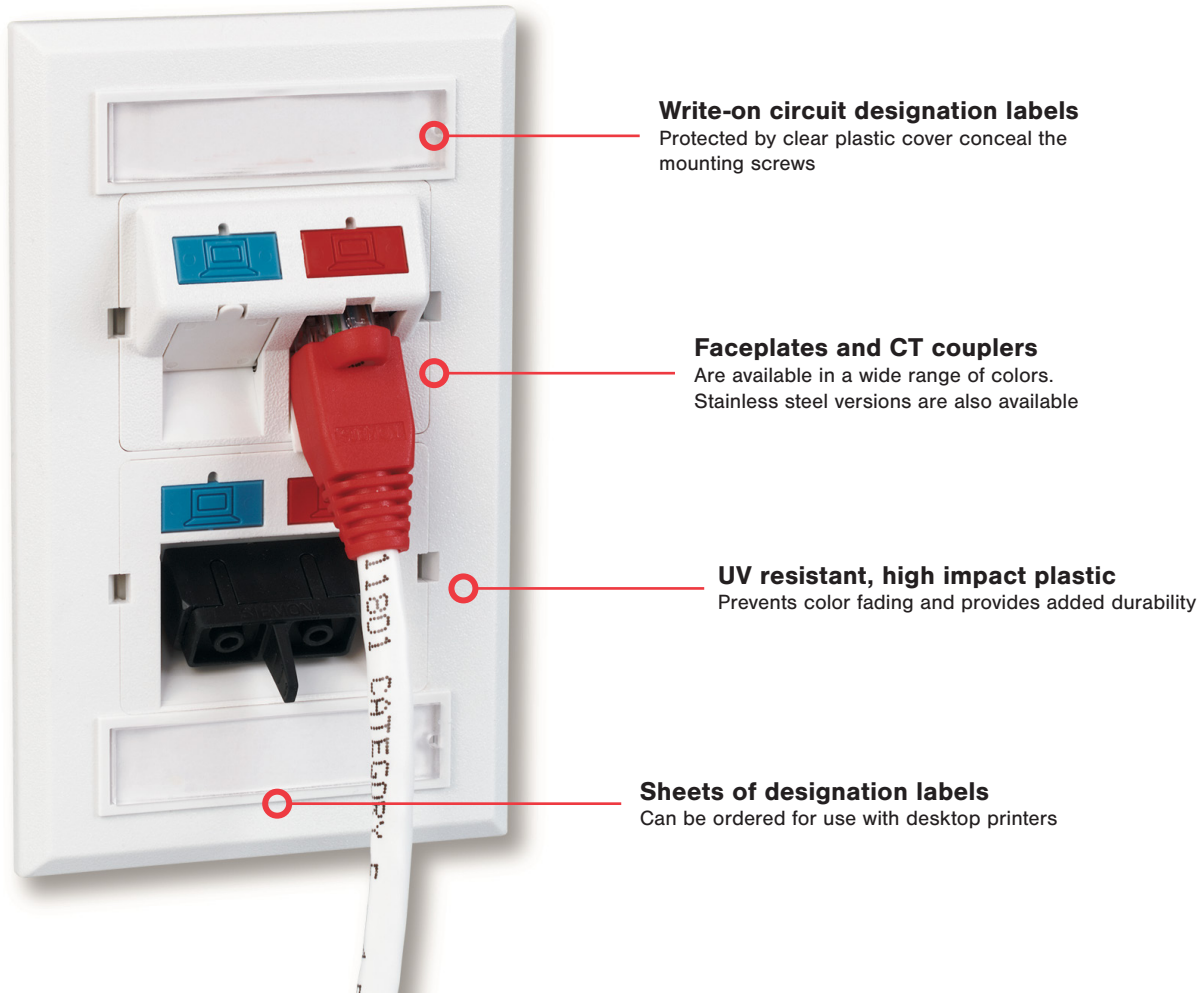


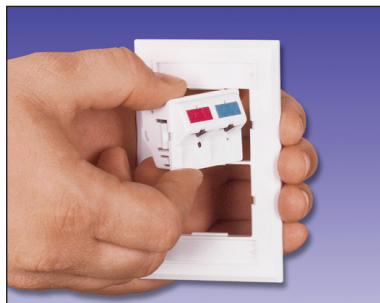
## CT Faceplates

At the work area, Siemon CT faceplates offer a sleek, clean appearance for mounting CT couplers. Designation labels cover the mounting screws (included) and provide ample circuit identification.



### Couplers

Can be easily snapped out of the front of the faceplates, making moves, adds, and changes quick and easy



### Cutouts

Allow couplers to pass through plates enabling mounting of faceplates after cables are terminated



### Faceplates

Include quick pressure-release designation label covers for quick, tool-less removal

## Ordering Information:

### CT Faceplates



#### Part Number

CT2-FP-(XX)

CT4-FP-(XX)

CT8-FP-(XX)

CT2-HFPA-(XX)\*

#### Description

Single gang plastic faceplate for one coupler

Single gang plastic faceplate for two couplers

Double gang plastic faceplate for four couplers

Single gang plastic horizontal faceplate for one coupler with screw caps (#6-32 screws)

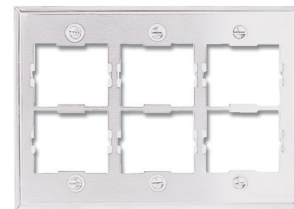
Use (XX) to specify color: 01 = black, 02 = white, 04 = gray, 20 = ivory, 80 = light ivory

Faceplates include designation label(s), clear label cover(s) and mounting screws

Add "B" to end of part number for bulk project pack, (includes 100 CT2 or CT4 faceplates or 50 CT8 faceplates, screws, designation labels and label covers).

\*Not available in bulk project pack

### Stainless Steel CT Faceplates



#### Part Number

CT4-FP-SS-L

CT8-FP-SS-L

CT4-FP-SS

CT8-FP-SS

CT12-FP-SS

#### Description

Single gang stainless steel faceplate for two couplers with labels and label holders

Double gang stainless steel faceplate for four couplers with labels and label holders

Single gang stainless steel faceplate for two couplers

Double gang stainless steel faceplate for four couplers

Triple gang stainless steel faceplate for six couplers

Ordering Information:

British CT Faceplates

The CT series British faceplates are compatible with British standards (85mm x 85mm) and are designed to work with our complete line of CT couplers.



Part Number		
CTE2-FP-(XX)	CTE4-FP22-(XX)	CTE4-FP-(XX)
Description		
Single gang British style faceplate for one coupler	Single gang British style faceplate for two couplers	Double gang British style faceplate for two couplers

Use (XX) to specify color: 02 = white, 82 = alpine white

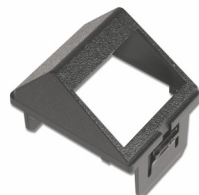
International CT Adapters

Part Number	Description
CTE-A-(XX)	50mm x 50mm adapter for one coupler

Use (XX) to specify color: 02 = white, 82 = alpine white



TERA®-MAX® Adapters for CT Faceplates



Part Number		Part Number
CTE-MXA-01-(XX)	CTE-MXA-02-(XX)	CTE-HZA-02-(XX)
Description		Description
Angled CT adapter for one UTP MAX module or TERA outlet	Angled CT adapter for two UTP MAX modules or TERA outlets	Horizontal CT adapter for two UTP MAX modules or TERA outlets

Use (XX) to specify color: 02 = white, 20 = ivory

Use (XX) to specify color: 01 = black, 02 = white



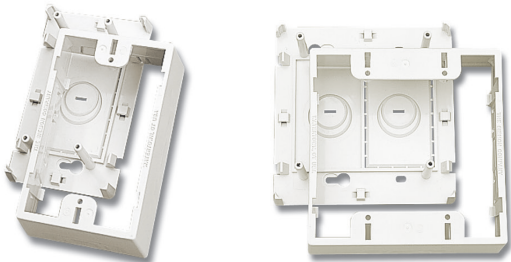
Ordering Information:

Faceplate Surface Mount Boxes

These boxes offer a surface mounting option for CT single and double gang faceplates. These boxes are perfect for installations where the work area outlet cannot be recessed into a wall or floor box. Mounting hardware not included.

Part Number	Description
CT4-BOX-(XX)	Surface mount box for one single gang CT faceplate Height: 119.3mm (4.70 in.) Width: 74.8mm (2.95 in.) Depth: 40.6mm (1.60 in.)
CT8-BOX-(XX)	Surface mount box for one double gang CT faceplate Height: 119.3mm (4.70 in.) Width: 120.8mm (4.76 in.) Depth: 40.6mm (1.60 in.)

Use (XX) to specify color: 01 = black, 02 = white, 04 = gray, 20 = ivory, 80 = light ivory



British Faceplate Surface Mount Boxes

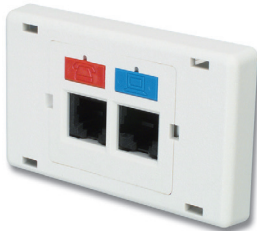
Part Number	Description
CTE2-BOX-02	Single gang surface mount box for British CT faceplates, white



CT Modular Furniture Adapters

Part Number	Description
CT-MFP-(XX)	Standard adapter (accepts one CT coupler)
CT-MFP-HMA-(XX)	Adapter for Herman Miller Series 2 & Ethospace Base openings (accepts two CT couplers)

Use (XX) to specify color: 01 = black, 02 = white, 04 = gray, 20 = ivory, 80 = light ivory



Because we continuously improve our products, Siemon reserves the right to change specifications and availability without prior notice.