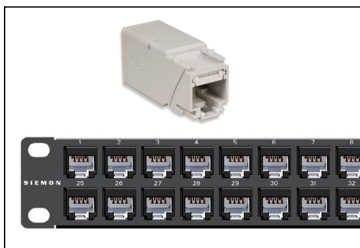
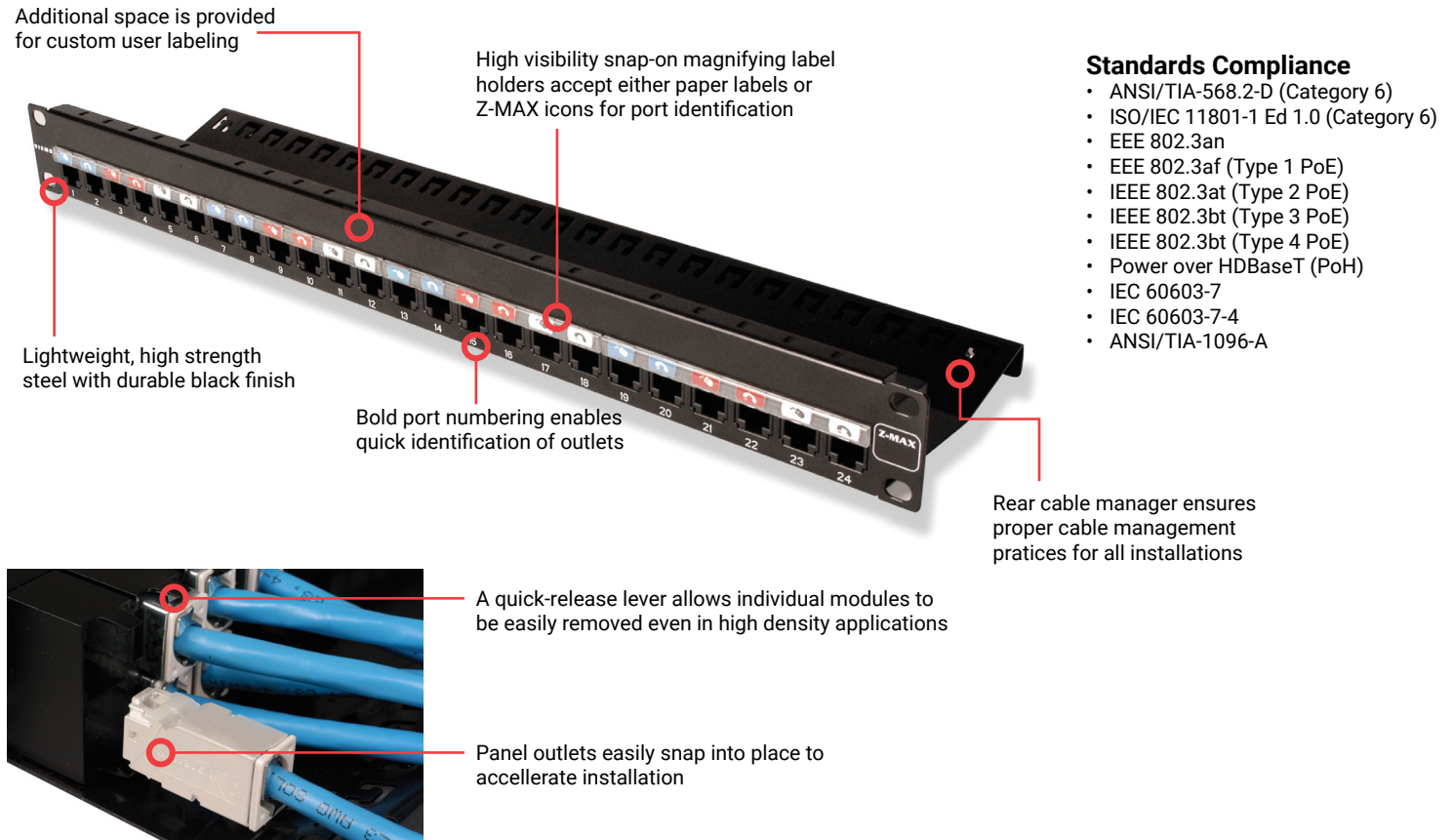


Z-MAX® 6 UTP Patch Panels

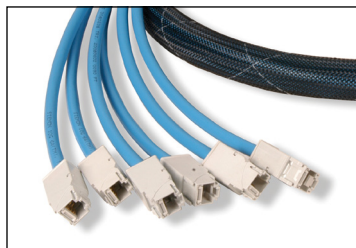
Regional Availability - Global

Z-MAX 6 UTP patch panels harness unprecedented performance and reliability in a high-density modular solution. These complete patch panel kits combine 19 inch patch panels with Z-MAX 6 panel outlets to offer exceptional category 6 patching solution.

The Z-MAX 6 UTP patch panels facilitate a world-class installation for data centers and telecommunications rooms by offering an attractive appearance combined with flexible labeling and color coding options. The Z-MAX panel modules feature a patent pending angled IDC contact pattern to exploit the widest module cross-section, enabling up to 48-ports in just 1U of rack space. Panels are offered in flat and angled styles with fixed or removable rear cable managers.



Panels may be ordered as complete kits which include the patch panel and Z-MAX panel modules



Leverage the quick-snap design by combining Z-MAX trunk assemblies with empty Z-MAX patch panels



High density version provides 48 ports in just 1U to reduce valuable rack space consumption

Product Information

Performance Specification Chart

Mechanical - Panel

Operating Temperature	-10 to 60 °C, (14 to 140 °F)	Dimensions (LxWxH)	109.2 mmx 482.6mm x 44.2mm (4.30"x19.00" x1.74 ")
Flammability Rating	UL 94 V-0	Mounting	CEA-310-E 19-inch (482.6mm) rack
Green Features	RoHS, lead-free, halogen-free, PVC free	Material - Panel	18 gauge cold rolled steel, black e-coat
Plastic Materials	Flame retardant themoplastic		

Ordering Information

Panels with Removable Rear Wire Manager

Part Number	Description
Z6-P(X)-24	Z-MAX 24-Port, CAT 6 UTP patch panel kit with removable wire manager, 1 U, Black, with Jacks
Z6-P(X)-48	Z-MAX 48-Port, CAT 6 UTP patch panel kit with removable wire manager , 1 U, Black, with Jacks
Z-P(X)-24	Z-MAX 24-Port UTP Patch panel with removable wire manager, 1U, Black, Empty
Z-P(X)-48	Z-MAX 48-Port UTP Patch panel with removable wire manager, 1U, Black, Empty

Use (X) to specify mounting style: F = Flat, A = Angled

Panels With Fixed Rear Wire Manager

Part Number	Description
Z6-PNL(X)-24K	Z-MAX 24-Port, CAT 6 UTP patch panel Kit, 1 U, Black, with Jacks
Z6-PNL(X)-U48K	Z-MAX 48-Port, CAT 6 UTP patch panel Kit, 1 U, Black, with Jacks
Z-PNL(X)-24E	Z-MAX 24-Port UTP Patch Panel, 1 U, Black, Empty
Z-PNL(X)-U48E	Z-MAX 48-Port UTP Patch Panel, 1 U, Black, Empty

Use (X) to specify mounting style: Blank = Flat, A = Angled

Panel Accessories

Part Number	Description
Z-PNL-PL24	Perforated label sheets for 24-port panels, blank on one side and numbered 1 to 24 on other. 7 sheets for up to 112 panels.
Z-PNL-PL48	Perforated label sheets for 48-port panels, blank on one side and numbered 1 to 48 on other. 14 sheets for up to 112 panels.
Z-PNL-PS	Patch panel label holder, bag of 25 (6-port wide)
Z6-P	Z-MAX Category 6 UTP panel outlet
PNLA-CVR-01	Angled panel cover, black
Z-BL-01	Z-MAX panel blank, bag of 10, black rubber, fits in empty Z-MAX panel opening as well as any RJ-45 port for dust protection.
Z-TOOL	Z-MAX termination tool*

* included in panel kit only

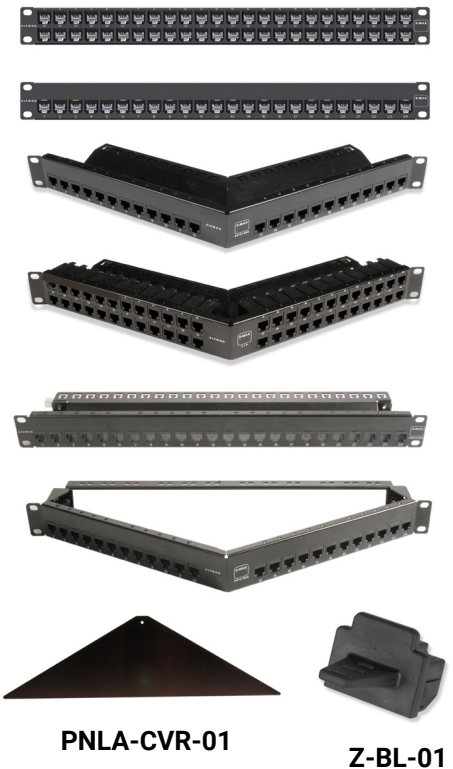
Panels include Z-TOOL*, label / icon holders, designation labels, cable ties, grounding lugs, and mounting hardware.

Note: 1U = 44.5mm (1.75 in.)

Termination technique may vary. See product instructions for details



Note: Z-MAX UTP panels are designed for use with Z-MAX UTP panel outlets only, for more information on panel outlets please reference outlet specifications sheet.



Because we continuously improve our products, Siemon reserves the right to change specifications and availability without prior notice.