

Communications

proNet - PROFINET / PROFIsafe communication module



The **proNet** module allows the features of amGardpro to become distributed IO (input output) on a PROFINET network; safety information is exchanged using the PROFIsafe extensions. The unit can connect the following modules to a PROFIsafe network; see individual datasheets for further details of the modules:

- A proLok safety switch with a vast array of options using modular adaptors, heads and actuators in the amGardpro range. The safety switches are communicated safely, with standard PNIO (PROFINET input output) for solenoid drive, monitor and head monitor.
- An e-stop and safety switch communicated safely across PROFIsafe.
- Up to eight lamps and pushbuttons from the proOption Pod range.

An integrated network switch facilitates 'daisy-chain' bus topologies with no additional hardware.

F-address set via web interface or DIP switches.

The following PROFINET features are supported:

- Complies with PROFINET IO Conformance class B
- SNMP with support for the following mibs: LLDP and MIB-II
- LLDP is supported (Topologi scan)

Variety of connection options including AIDA specification.

Diagnostic functions available via web interface:

- Supply voltage.
- Current PROFINET IO.
- Current F-address.
- Ethernet connection statistics.

proNet Part Number Options

Part Number	Description
N0xxxxN*	proNet stand alone interface.
N1xxxxN*	proNet to suit proStop module.
N2xxxxN*	proNet to suit proLok module.
PF04	AIDA with B coded external safety switch
PF05	AIDA with A coded external safety switch
PF06	AIDA connectors
PF07	3 QD set - 1 Power, 2 Profinet
PF08	4 QD set - 2 Power, 2 Profinet
PF09	4 QD set - 1 Power, 2 Profinet, 1 External safety switch

* see amGard proPod datasheet for button options

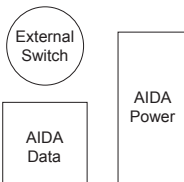
proNet Technical Specification

Housing Materials	Zinc Alloy to BS1004A
Paint Finishes	Gloss Powder Coat on Passivated bodies
Ingress Protection	IP67 (IP65 with buttons)
Ambient Temperature	-5°C to + 60°C (23°F to 140°F)
Supply Voltage	24V DC +/- 10%
Supply Current	≤750mA

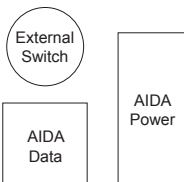
Pin Out

Power		Data		External Safety Switch		AIDA Power		AIDA DATA	
M12 MALE - 5 Pin		M12 FEMALE - 4 Pin 'D' Coded		M12 FEMALE - 5 Pin		5 Pin Push Plug		RJ45	
1	+24V Supply*	1	TX+	1	S/C1	1	+24V Supply	1	RX+
2	0V**	2	RX+	2	S/C2	2	0V	2	RX-
3	0V**	3	TX-	3	S/C1	3		3	TX+
4	+24V Supply*	4	RX-	4	S/C2	4		4	
5	Case (Earth)			5		5	Functional EARTH	5	
*Internally connected								6	TX-
**Internally connected								7	
								8	

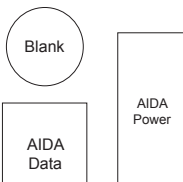
PF04



PF05



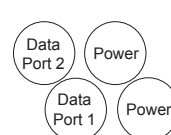
PF06



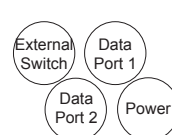
PF07



PF08



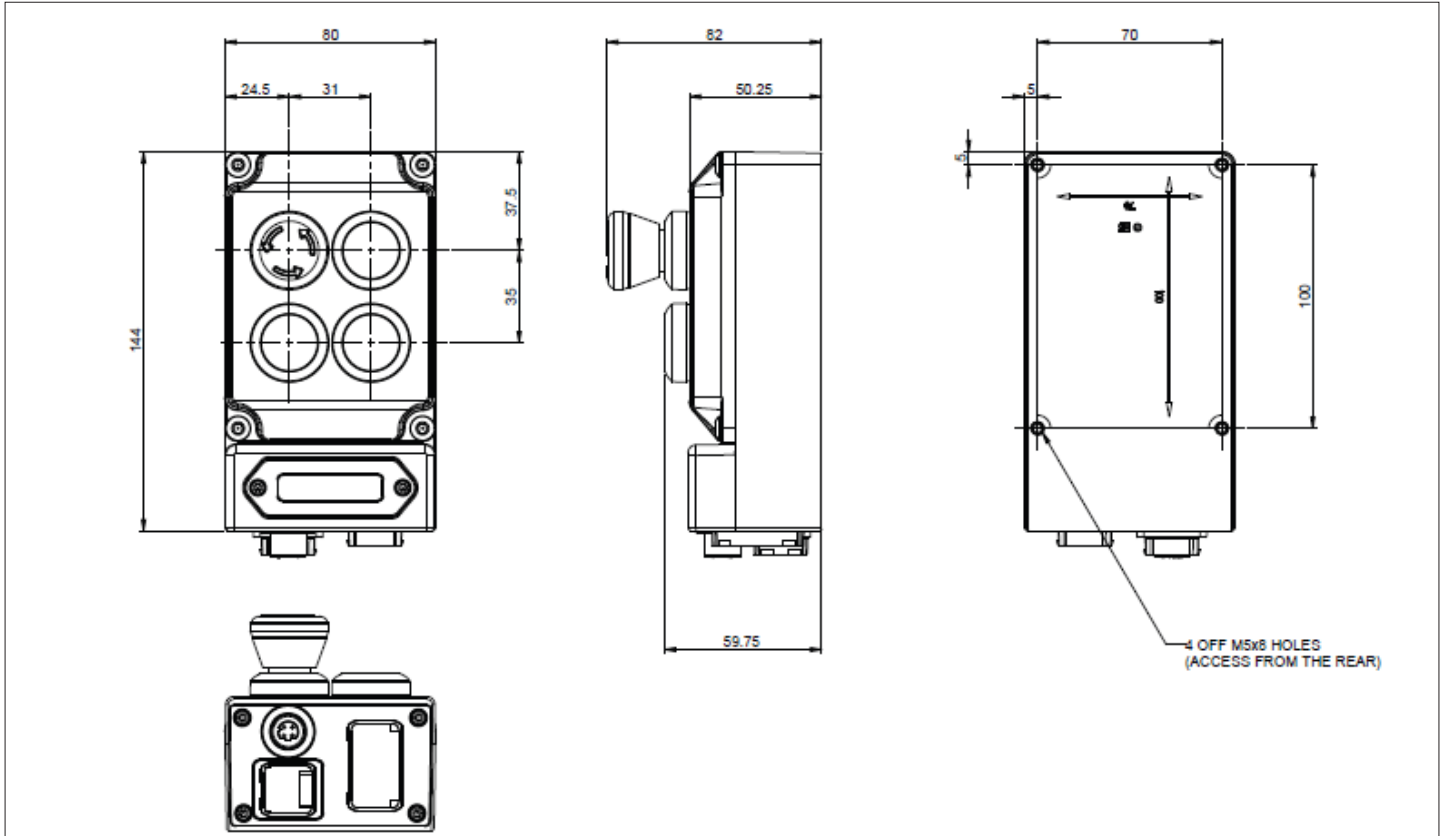
PF09



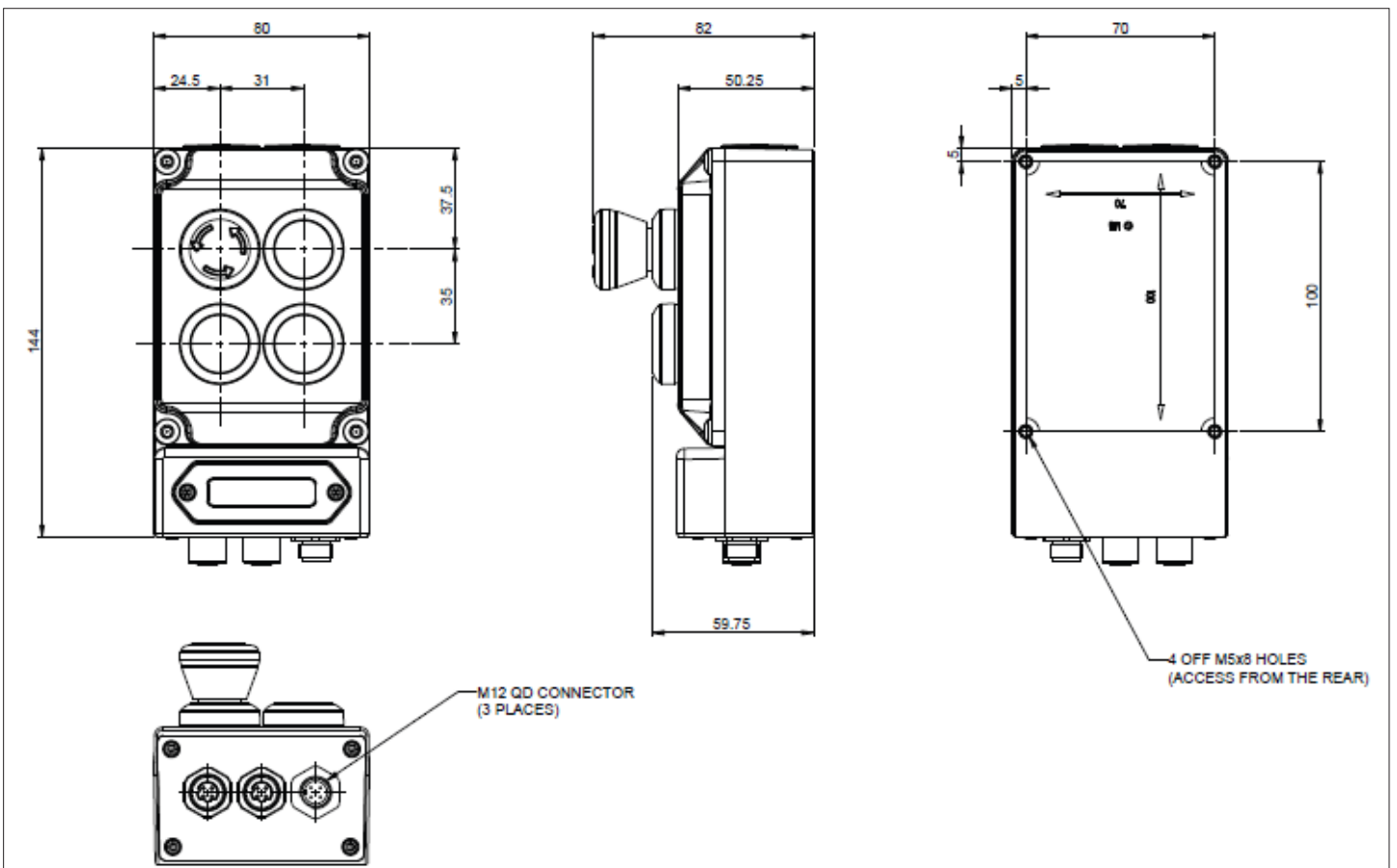
Communications

proNet - PROFINET / PROFIsafe communication module

Dimensional Drawing PF04, PF05, PF06



Dimensional Drawing PF07



Communications

proNet - PROFINET / PROFIsafe communication module

Dimensional Drawing PF08 PF09

