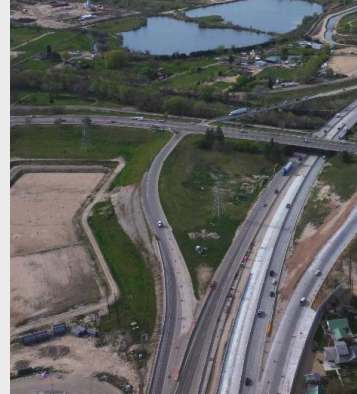




I-84 Centennial Way eastbound on-ramp to close for 60 days

Starting June 25, the Centennial Way eastbound on-ramp will close for **60 days** for crews to rebuild the ramp and connect to the new lanes on I-84.



Here's what to expect:

- The Centennial Way eastbound on-ramp will close Thursday night, June 25, at 10 p.m.
- The ramp will remain closed for 60 days.
- Motorists will detour to the 10th Avenue eastbound on-ramp. [View a detour map.](#)

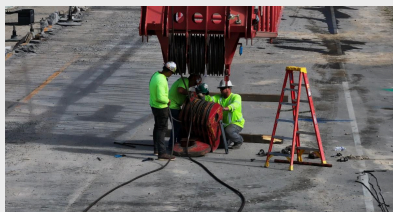
This will be the last extended ramp closure until the end of construction.

Good news! After the Centennial Way ramp closes, crews will reopen the 10th Avenue eastbound off-ramp after rebuilding the ramp in just 80 days.



Pardon our noise!

As part of the Centennial Way ramp closure, work will be noisy as crews begin breaking up and removing the ramp starting Friday, June 26.



Work will be noisy with truck backup alarms and construction equipment operating **during the day and night** from Friday, June 26, through Thursday, July 2nd.

Thank you for your patience.

Plan ahead, slow down, and pay attention!


What's happening in the work zone is interesting and it can be tempting to look while driving by. Do your best to minimize these distractions and stay alert. Check out the [project website](#) and our [monthly update videos](#) to see what crews are up to!

To plan your route in advance, visit 511.idaho.gov.

STAY INFORMED  ITD.IDAHO.GOV/PROJECT/84-CENTENNIALTOFRANKLIN

 84CORRIDOR TO 1-866-483-8422

 84CORRIDOR@ITD.IDAHO.GOV

 (208) 334-8002



Individuals who need special accommodations should contact CivilRights@itd.idaho.gov or 208-334-8884. TTY/TDD users dial 711 to use the Idaho Relay System. Person needing an interpreter should contact 208-334-8496.



 Share This Email



Idaho Transportation Department | 3311 W. State St. | Boise, ID 83707 US

[Unsubscribe](#) | [Update Profile](#) | [Constant Contact Data Notice](#)



Try email marketing for free today!