

# I-84

## CENTENNIAL WAY FRANKLIN ROAD

### REMINDER: OVERNIGHT RAMP CLOSURES ON I-84

The Idaho Transportation Department will close a series of ramps on I-84 in Caldwell this weekend. These overnight ramp closures will allow crews to move the westbound lanes back to the westbound side of the interstate.

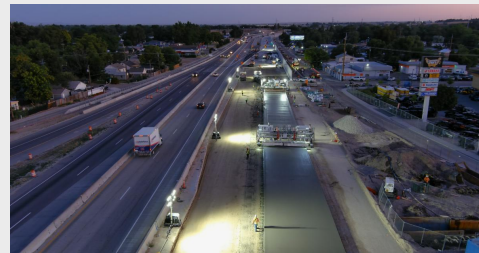
Watch the video on the right to see what the new traffic configuration will look like!



[Click here to watch](#)

#### WHAT TO EXPECT:

- The Centennial Way and 10th Avenue westbound off-ramps (exit 27 and 28) will close **tonight (Friday, August 1)**.
- The Centennial Way westbound off-ramp, 10th Avenue westbound off-ramp (exit 27 and 28) and the Franklin Road westbound on-ramp will close **tomorrow night (Saturday, August 2)**.
- All closures will happen **overnight from 10:00 p.m. to 7:00 a.m.**
- [Click here to view the detour maps for each night.](#)



### Plan ahead, slow down, and pay attention!

What's happening in the work zone is interesting and it can be tempting to look while driving by. Do your best to minimize these distractions and stay alert. Check out the [project website](#) and our [monthly update videos](#) to see what crews are up to!

To plan your route in advance, visit [511.idaho.gov](http://511.idaho.gov).



Persons needing an interpreter or special accommodations are urged to contact 208-334-8884 or TTY/TDD users Dial 711 to use the Idaho Relay System.



Idaho Transportation Department | 3311 W. State St. | Boise, ID 83707 US

[Unsubscribe](#) | [Update Profile](#) | [Constant Contact Data Notice](#)



Try email marketing for free today!