

Land Portfolio

2605-2607 SECHLER COURT, WEISENBERG TWP., PA



FIVE LOTS - READY TO BUILD - 18.67 AC

Property Description:

- 1.4 Miles to I-78 , on ramp, within 90 Minutes of NYC & Philly
- Major distribution hub within a one day drive of 30% of the U.S population
- Zoned RC (Rural Conservation) and Farm Assessed: For investment opportunities, establishing a small farm, building new homes for your family, or pursuing construction, development, and resale.

Land Portfolio
For Sale

Nicholas D'Egidio | Sales Rep - Licensed in NJ and PA
Direct: 732 746 3051 ext. 105
Email: Nick@ColettaCommercial.com

Mario D'Egidio | Sales Rep - Licensed in PA
Direct: 732 746 3051 ext. 107
Email: Mario@ColettaCommercial.com

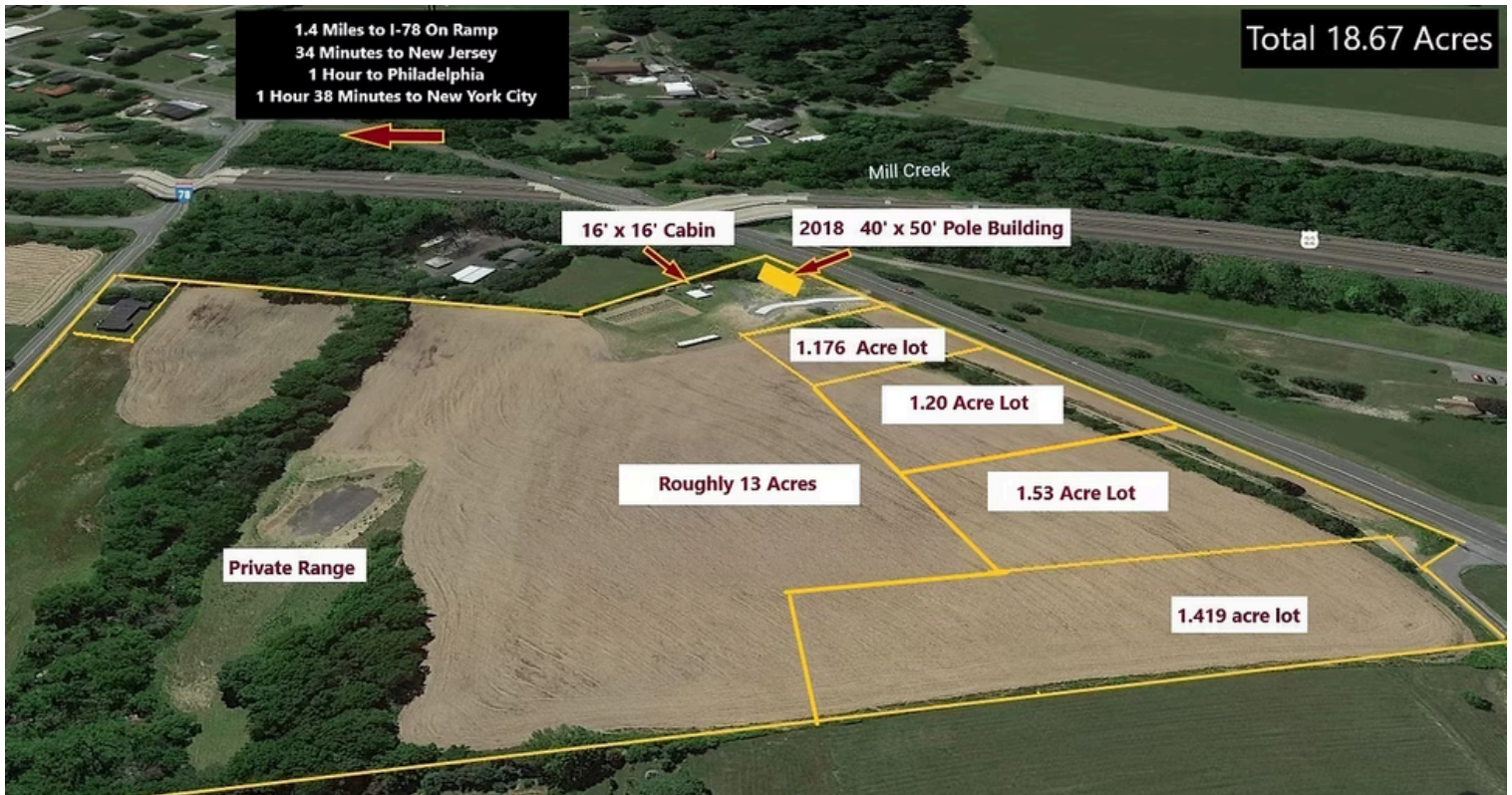


RETAIL | INVESTMENTS | LAND

1101 Richmond Ave, Suite 200, Point Pleasant Beach, NJ 08742 | www.ColettaCommercial.com | Licensed Real Estate Broker

Land Portfolio

2605-2607 SECHLER COURT, WEISENBERG TWP., PA



Sale Info

Strategically located near major cities and ports, this property combines rural charm with development-ready infrastructure, making it ideal for investment, building your dream home, or launching a profitable development project.

- **Location:** 1.4 miles to I-78, 90 minutes to NYC and Philadelphia.
- **Growth:** 14% area growth since 2000; key distribution hub within one-day drive of 30% of U.S. population.
- **Development-Ready:** 5 approved lots, electric and water on-site, low farm-assessed taxes.
- **Features:** New 40' x 50' pole building, cabin, creek, private range, and recreational opportunities.
- **Convenience:** Minutes from shopping, Dorney Park, and LVH healthcare.

Land Portfolio

Nicholas D'Egidio | Sales Rep - Licensed in NJ and PA
Direct: 732 746 3051 ext. 105
Email: Nick@ColettaCommercial.com

Mario D'Egidio | Sales Rep - Licensed in PA
Direct: 732 746 3051 ext. 107
Email: Mario@ColettaCommercial.com



1101 Richmond Ave, Suite 200, Point Pleasant Beach, NJ 08742 | www.ColettaCommercial.com | Licensed Real Estate Broker