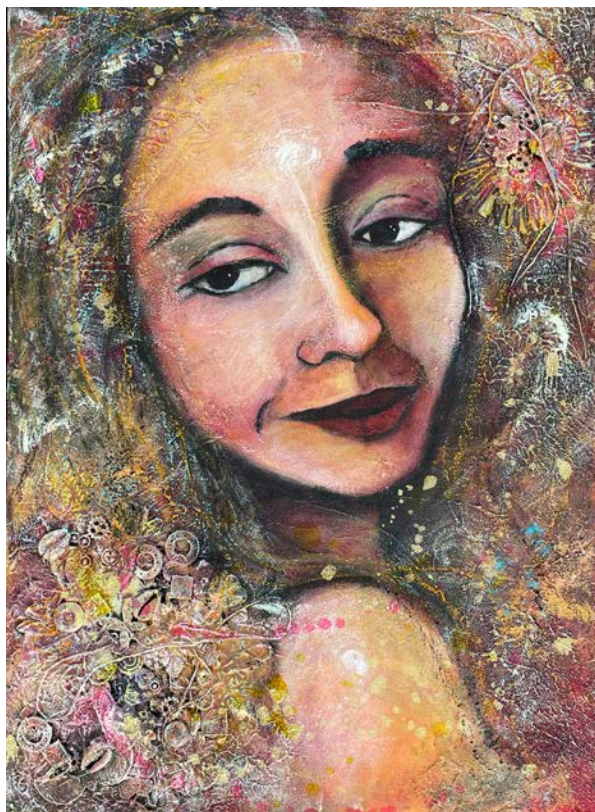


# Members' Exhibition

## Museum Gift Shop Holiday Extravaganza & The Art of Celebrating



*Blodeuwedd* by Angie Wimmer of Attleboro, MA; acrylic and mixed media.

Attleboro Arts Museum

86 Park Street, Attleboro, MA 02703

### *Exhibition dates:*

December 11<sup>th</sup>, 2021 – January 28<sup>th</sup>, 2022

Tuesday – Saturday, 10am – 5pm

(Closed December 24<sup>th</sup>, 2021 – January 4<sup>th</sup>, 2022)

### *Opening Reception/Open House:*

- Saturday, December 11<sup>th</sup>, 2021; 1pm - 4pm
- Live music, free and open to all
- Award winning art will be identified in the gallery starting at 1pm
- RSVP by Dec 10<sup>th</sup> to [office@attleboroartsmuseum.org](mailto:office@attleboroartsmuseum.org) or 508-222-2644 x10

### *The Art of Celebrating:*

December 1<sup>st</sup> – 18<sup>th</sup>; 10am - 5pm

### *Gift Shop Holiday Extravaganza:*

December 7<sup>th</sup> – 11<sup>th</sup>; 10am - 4pm

FOR IMMEDIATE RELEASE – November 30, 2021

*Attleboro, MA* – Over 400 works of art will be on view during the Attleboro Arts Museum's annual Members' Exhibition from December 11<sup>th</sup>, 2021 – January 28<sup>th</sup>, 2022. The exhibition, an annual tradition, will be mounted in-gallery at 86 Park Street in downtown Attleboro, MA.

A popular and unique Attleboro Arts Museum member benefit is the opportunity to annually exhibit up to three original works of art in the Museum's Ottmar Gallery during the organization's Members' Exhibition. In the spirit of the Museum's tagline – *Arts for Everyone* – all work is accepted into this exhibition. Once the work is on display, 2021 guest juror LaiSun Keane, owner of LaiSun Keane Gallery located

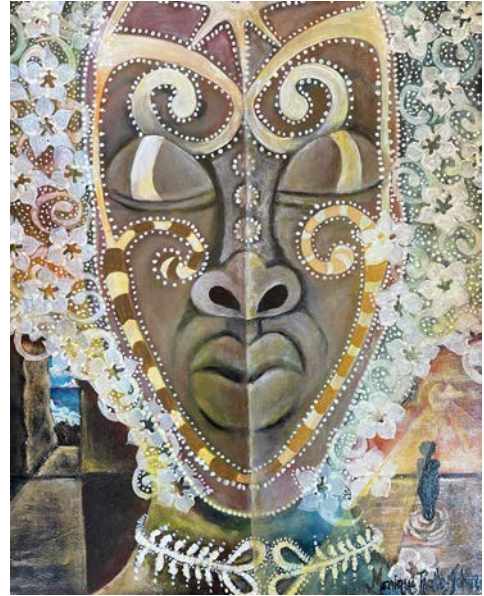


*Nature Sculpt* by Ken Lingren of Norwood, MA; wood.

in Boston's SoWa district, will award cash prizes, art materials certificates and commendations of merit to outstanding artists.

Guest juror LaiSun Keane graduated with a Bachelor of Art Theory from University of New South Wales, Sydney Australia and went on to work with the non-profit gallery, National Art School Gallery, and the commercial art gallery, AAG, which specializes in Australian Aboriginal Art. She moved to Boston in 2013 and launched LaiSun Keane Art Gallery in April 2020. Laisun Keane Gallery provides a platform for non-mainstream voices. Since inception, the gallery has staged 14 exhibitions of artists with diverse backgrounds and narratives.

Mim Brooks Fawcett, the museum's executive director and chief curator comments, "The range of art collected for the 2021 Members' Exhibition includes a broad sampling of disciplines, concepts and attitudes. Once again, our artists have produced careful work that has been created with an authentic voice." Fawcett continues, "These pieces command attention and do a fine job representing the strength of the museum's growing artist membership." Many of the works are for sale with proceeds benefitting both the artist and the museum. Over the years several Members' Exhibition pieces have become cherished holiday gifts.



*Door of No Return* by Monique Rolle-Johnson of Cranston, RI; mixed media.



*Sea Cliffs II* by Pamela R. Tarbell of Concord, NH; oil.

The exhibit's traditional opening awards reception, that typically welcomes over 200 guests, will be modified for health concerns this year. From 1pm – 4pm on Saturday, December 11<sup>th</sup> a reception/open house will take place in the museum's Ottmar Gallery. The event is free and open to the public. All guests are required to wear masks throughout their time in the museum, the reception has been extended by one hour to help mitigate congestion, refreshments will not be served as a safety precaution, and there will be no gathering for reception announcements to allow for distancing.

Despite these measures, that have been implemented with some variation on all receptions since 2020, the Members' reception/open house is sure to be a strong celebration of the museum's creative community. The Ray Conniff Foundation has funded live music during the entire event performed by singer/songwriter Brady Dallas Jones, guests will find labels identifying award winning art in the gallery starting at 1pm on December 11<sup>th</sup>, "The Art of Celebrating" will be on view in the museum's Community Gallery, and the Gift Shop Holiday Extravaganza will be underway. The event is free and open to the public. RSVP by December 10th to [office@attleboroartsmuseum.org](mailto:office@attleboroartsmuseum.org) or 508-222-2644 x10.



Standard hours for the Members' Exhibition are Tuesday – Saturday, 10am – 5pm (closed December 24th, 2021 – January 4th, 2022). Admission is free; donations are always appreciated.

---

## 2021 Gift Shop Holiday Extravaganza: December 7<sup>th</sup> – 11<sup>th</sup>

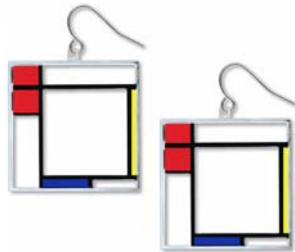
The gift shop at the Attleboro Arts Museum features an innovative mix of handcrafted items by local, regional and national artists along with cutting-edge mass-produced items. Partial proceeds from the purchase of a handcrafted item supports the artist that created the piece as well as the museum – while sales from manufactured items benefit the museum. In all cases, purchases are supporting and endorsing the arts.

The shop maintains a popular selection of unique housewares, jewelry, accessories, greeting cards, innovative toys, ceramics, books and more. Each holiday season several new products are introduced during a "Holiday Extravaganza." All major credit cards, cash and checks are accepted. The 2021 "Extravaganza" will run from December 7<sup>th</sup> – 11<sup>th</sup>, Tuesday – Saturday from 10am – 4pm. Members' Exhibition reception visitors will find the shop open during that event.

*Unique Handmade Marbled Paper Scrap Packs by Cristina Hajosy are a beautiful supply for scrapbooking, collage and card making.*



*Mondrian Composition Earrings by David Howell & Co. are part of the gift shop's new artist-inspired line of jewelry.*



*Five Piece Handmade Bamboo Spoon Set by John Pietrella.*



---

## 10<sup>th</sup> Annual "The Art of Celebrating: Trees, Lights & Symbols of the Season"



*I Wonder as I Wander by Barbara Corrigan; gouache.*

From December 1<sup>st</sup> – 18<sup>th</sup> unique holiday art pieces created and decorated by volunteer artists will be featured during "The Art of Celebrating: Trees, Lights & Symbols of the Season." Each original piece features a creative take on a traditional symbol or scene of holiday celebration. All pieces will be raffled off to benefit Museum art classes and art exhibitions. Now celebrating its tenth anniversary, "The Art of Celebrating" has showcased the talents of supportive artists and raised thousands of dollars for the organization.

2021's participating artists include: Christina Beecher, Bill Clark, Michael Evans, Mim Brooks Fawcett, Renée Harding, Margo Lemieux, Rina Naik, Amy Rhilinger, Abby Rovaldi, Tatiana Roulin, Kerry St.Pierre, and Carol Wontkowski. A charming, winter-themed piece by Attleboro's famed artist, Barbara Corrigan, is part of the exhibit this year thanks to a generous gift from Missy Riley and Al Walker.



*Five Golden Rings, Grey & Black* by Renée Harding; wool, felt & embroidery.

This year's collection of works can be viewed online starting December 1<sup>st</sup> at [www.attleboroartsmuseum.org](http://www.attleboroartsmuseum.org) – click on “The Art of Celebrating.” The actual items will simultaneously be on display in the museum's Community Gallery.

Raffle prices are: one ticket for \$1; seven tickets for \$5; twenty tickets for \$10. Winners will be selected at 4pm on December 18<sup>th</sup>, 2021. Ticket holders do not need to be present to win. Raffle tickets can be purchased at [www.attleboroartsmuseum.org](http://www.attleboroartsmuseum.org), in person at the Museum, or over the phone by calling 508-222-2644 x10 (Tuesday – Saturday from 10am – 5pm).

*Gnome for the Holidays* by Abby Rovaldi; ink & collage (triptych).



The **Attleboro Arts Museum** involves audiences of all ages and backgrounds in the visual arts through diverse educational programs and engaging arts experiences. We work to support the creative and artistic development of both promising and professional artists. The Museum is a privately supported, non-profit arts institution whose core commitment to “Arts for Everyone” guides the Museum's programs and operations.

[www.attleboroartsmuseum.org](http://www.attleboroartsmuseum.org)

#### **Contact:**

Mim Brooks Fawcett  
Chief Curator and Executive Director  
Attleboro Arts Museum  
86 Park Street, Attleboro, MA 02703  
508.222.2644 x11  
[mfawcett@attleboroartsmuseum.org](mailto:mfawcett@attleboroartsmuseum.org)

**ARTS** for everyone