



Solution
Partner

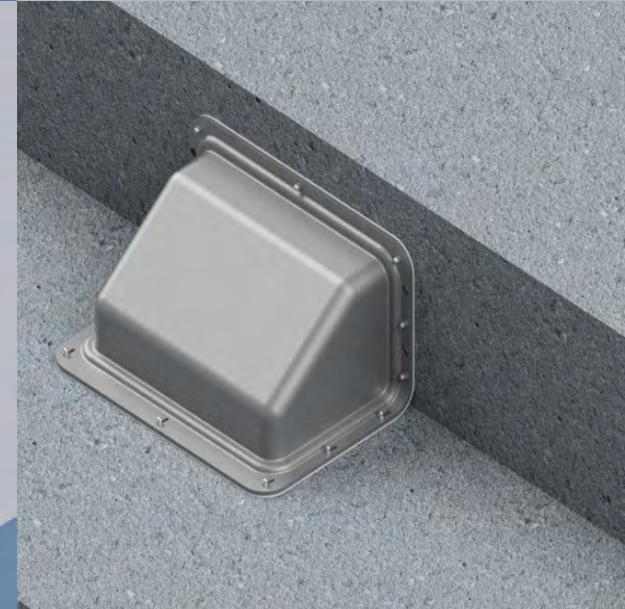


Mounting Solutions for WiFi Access Points
oberoninc.com

Oberon Professional Wireless LAN Installation Solutions for Cisco Access Points



Improved WLAN Installation Solutions!



OBJECTIVES

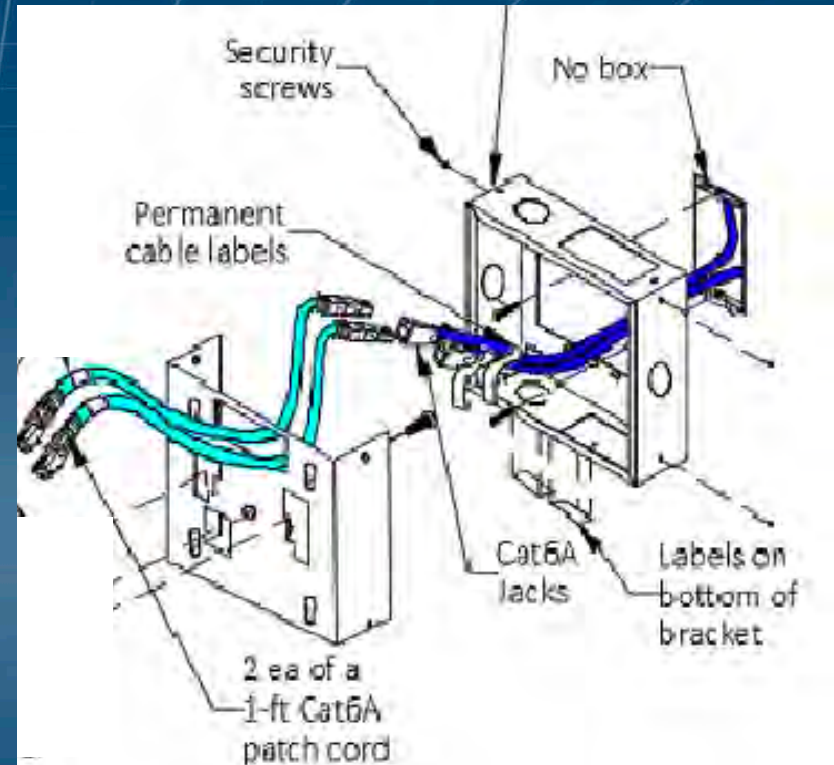
- Achieve best wireless performance by optimizing access point location, orientation, antenna positioning.
- Provide access point and associated cabling with the physical and environmental protection suitable for the venue.
- Provide installation aesthetics that reflect the professionalism of the installer, and please the building architect or owner.
- Assist in compliance with venue specific requirements: codes in public spaces, infection control in hospitals, infrastructure security in government, retail, healthcare, etc.
- Consider and reduce installation, connectivity, and maintenance time, material, and cost.

Wall and Hard Ceiling AP Surface Mount Box

- White powder-coated steel, low-profile hard wall mount for most enterprise APs
- Secure AP on hard walls and ceilings, conceal patch cords, jacks, and outlet



Model 900-00



- Knockouts for raceway, conduit, TIA-569 compliant furniture faceplate jack modules
- 2-piece snap-together design, large enough to terminate two Cat 6A cables

Pendant AP Mount in Open Ceiling

- Install most enterprise APs on hanging conduit (pendant mount) in open ceilings
- White powder-coated steel

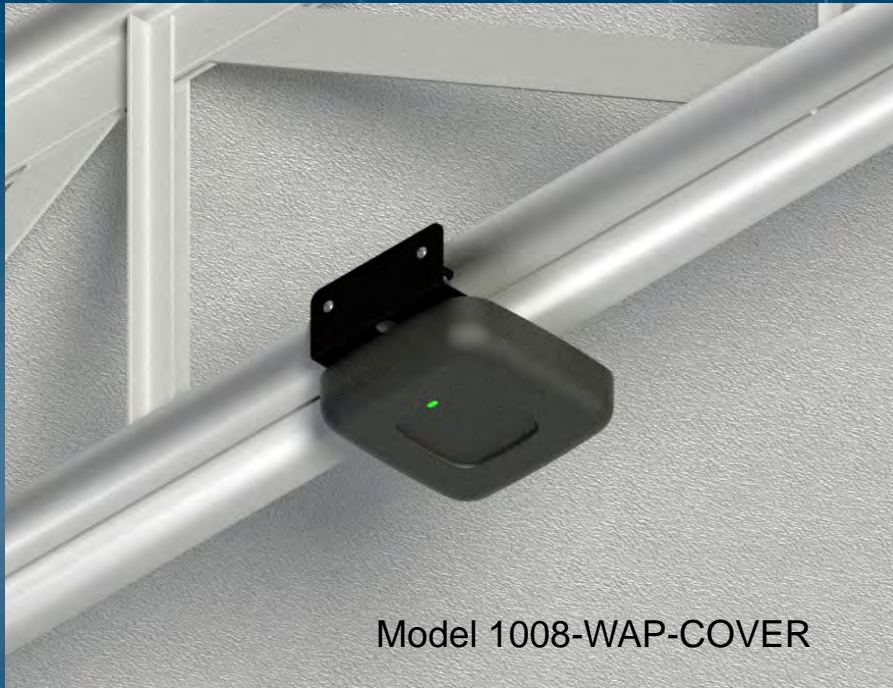


Model 900-HC



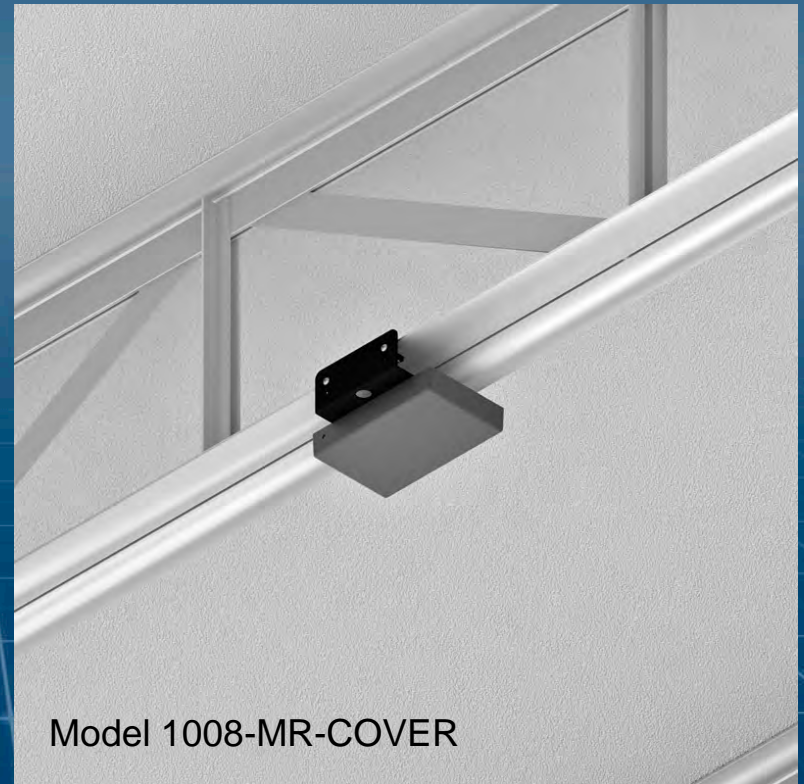
- Knockouts for raceway, conduit, TIA-569 compliant furniture faceplate jack modules
- 2-piece hinged design, large enough to terminate two Cat 6A cables

AP Mount in Open Ceiling Joist, Beam, or Wall



- Vanity covers available for leading enterprise APs
- Includes beam clamps for attaching to joists or beams

- Install AP in preferred horizontal orientation on joists in open ceilings
- Includes detachable, paintable black plastic vanity cover for AP, conceals AP in open ceilings



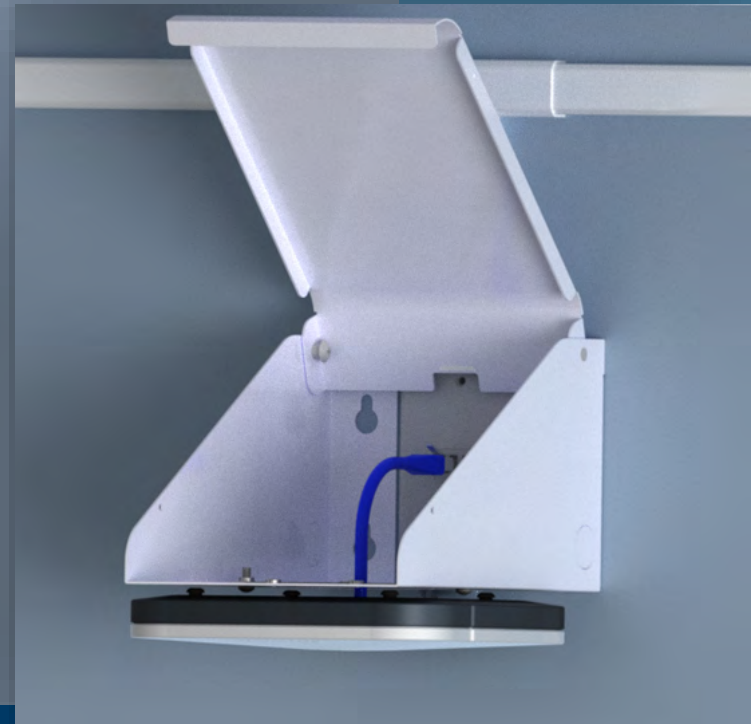
Right Angle Wall Bracket - Universal

- Mount AP in preferred horizontal orientation on walls
- Mount AP at desired height
- Attractive white, powder-coated steel construction



- Hinged cover conceals outlet, patch cords and jack module
- Lockable version available

Model 1011



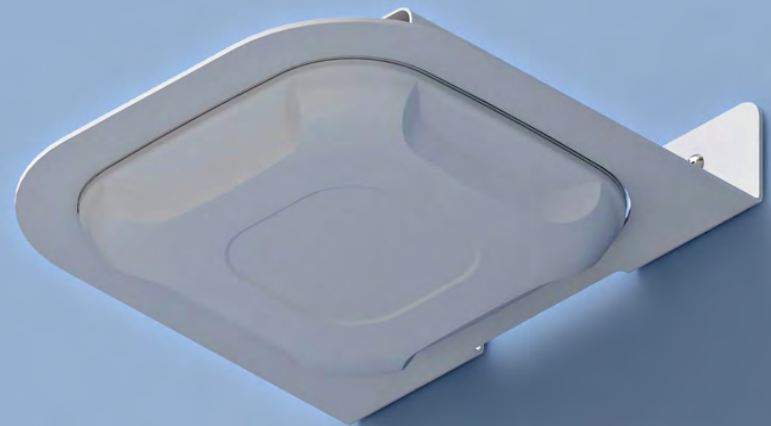
Right-Angle Wall Bracket – Cisco-Specific

Cisco 3800 Series AP



Model 1006-CCOAP3800

Cisco 3700 Series AP



Model 1006-CCOAP

- Mount AP in preferred horizontal orientation, and desired height
- Low profile, aesthetic, white powder-coated steel construction

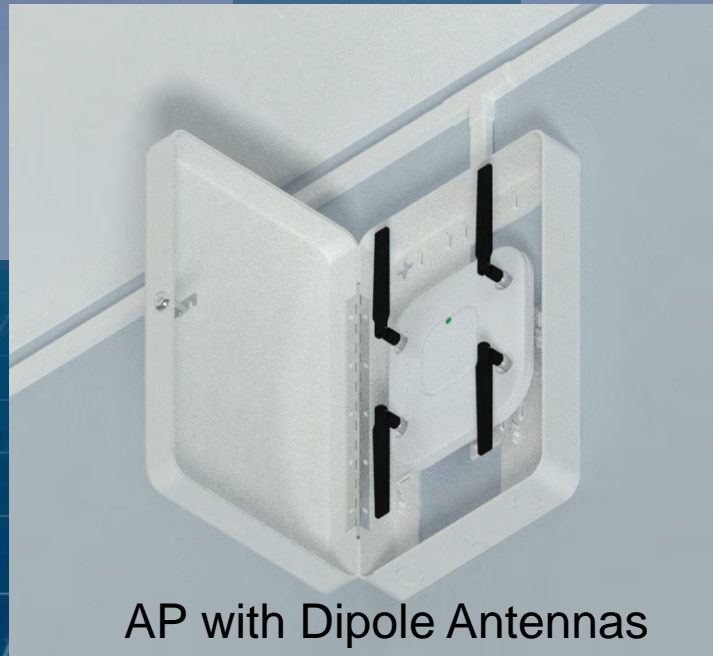
Non-Metallic Enclosures For AP and Antennas

Cisco Panel Antenna
on articulating mount



Model 1016-ANTPLATE

- Mount antennas in preferred orientation
- Rugged ABS plastic is virtually transparent to wireless signals



AP with Dipole Antennas

- Conceal outlet, cables, patch cords, & connectors
- Lockable and aesthetic

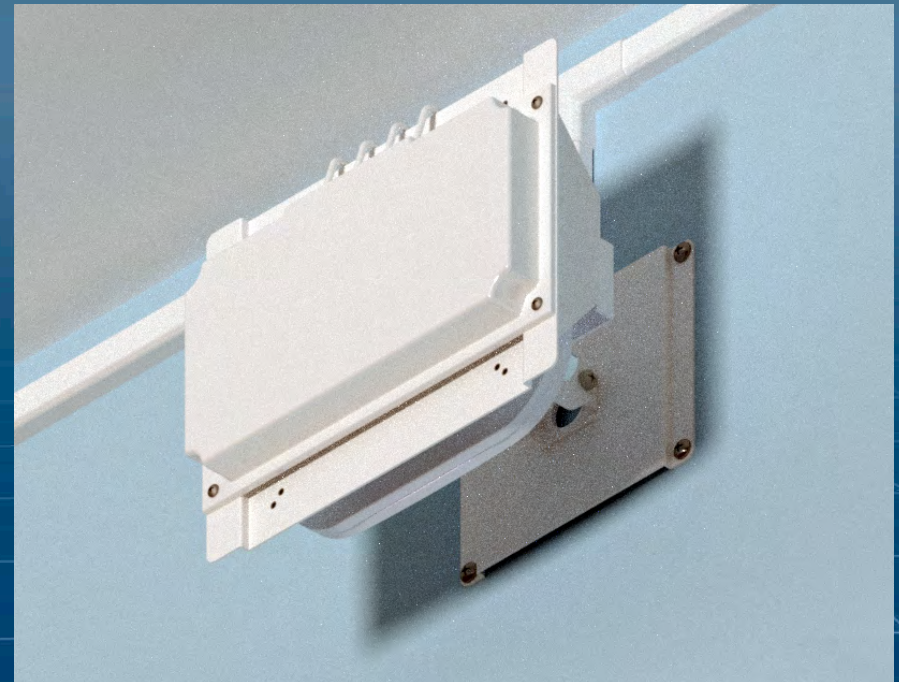
AP & Panel Antenna Mount



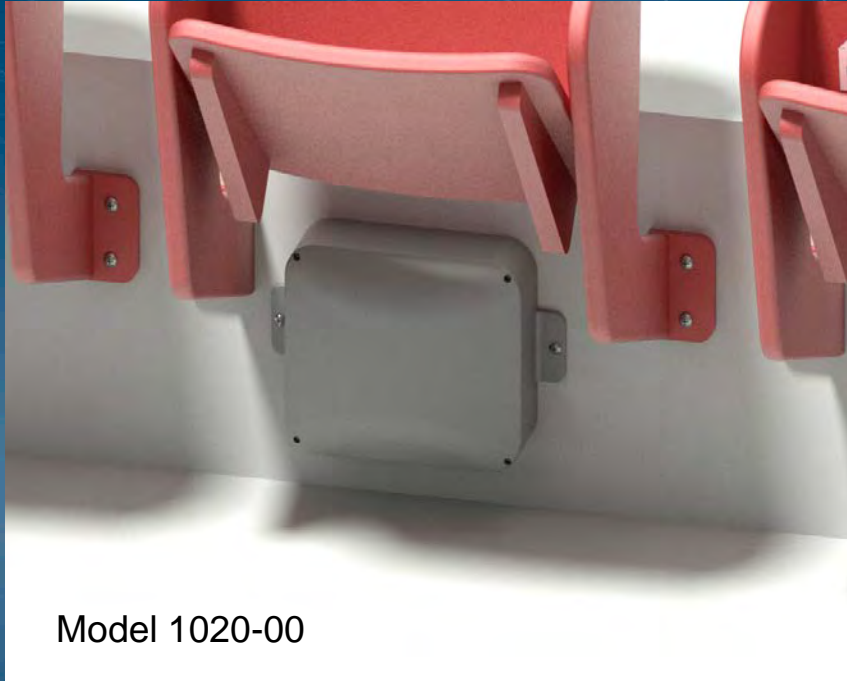
Model 1013-COVER

- 2- axis articulating AP & antenna wall mount
- Point panel antenna in preferred direction
- Ideal for creating zones of coverage in auditoriums and other large indoor venues

- Attractive white, powder-coated steel mount
- Paintable ABS plastic cover is virtually transparent to wireless signals



Surface Mount AP Enclosures



Model 1020-00

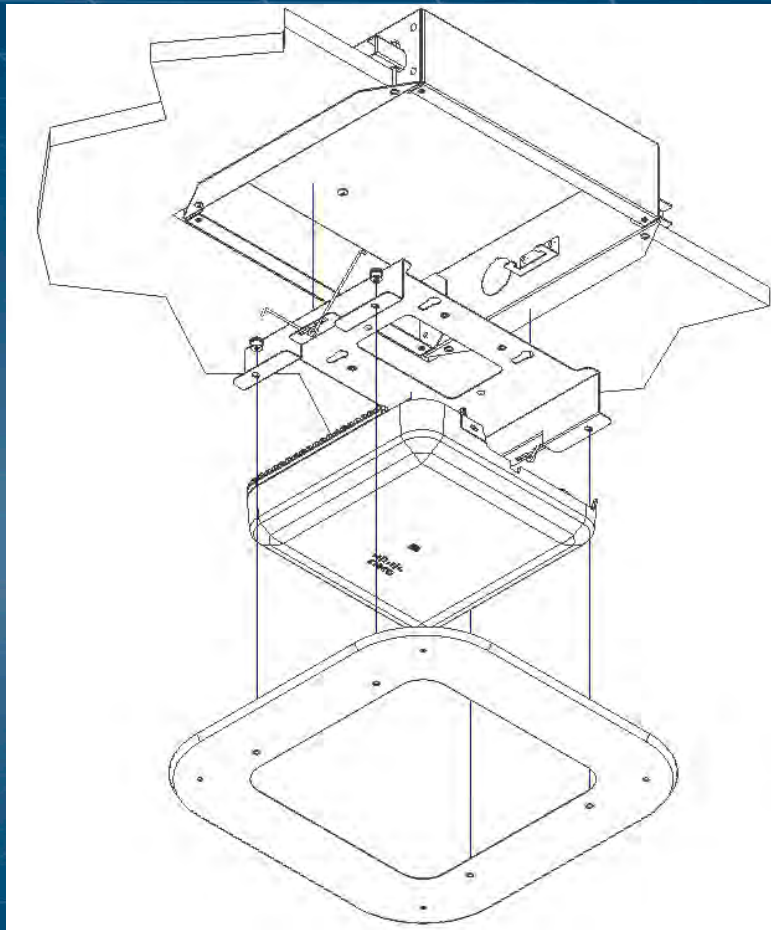
- Model 1020-00 NEMA 4, waterproof AP enclosure for under-seat installation
- Protect AP from power washing, spilling drinks, feet etc.
- ABS/Polycarbonate is very tough, and virtually transparent to wireless signal

- Non-metallic AP lock box for corridors, courtyards, stairwells, gymnasiums, etc.
- Protect AP, cables, and connectors
- Durable, paintable ABS plastic is virtually transparent to wireless signal



Model 1015-00

Drywall Wall and Ceiling Recess AP Mounting Kits



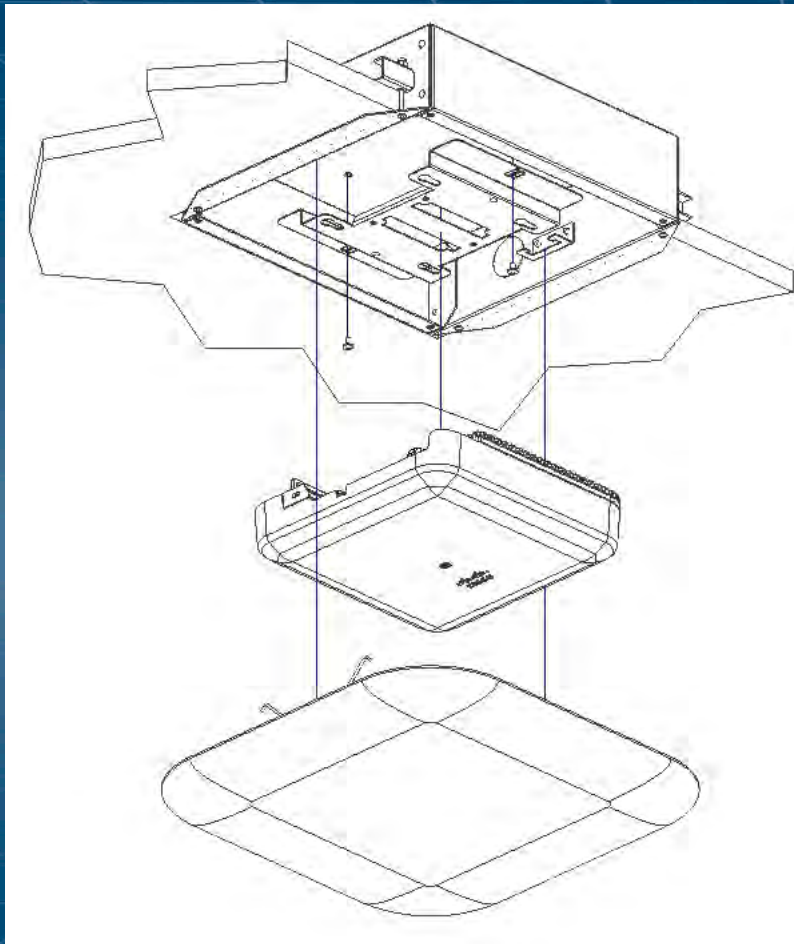
- Recess AP into drywall panel wall/ceiling, (like recessed lighting). Antenna face is exposed to room for optimal wireless coverage.
- Aesthetic and economical, and simplifies AP service and replacement.
- All metal back-box is plenum-rated, code compliant, UL listed.

- Interchangeable, attractive white, powder-coated steel AP trim. Attaches to back-box without tools or loose hardware.



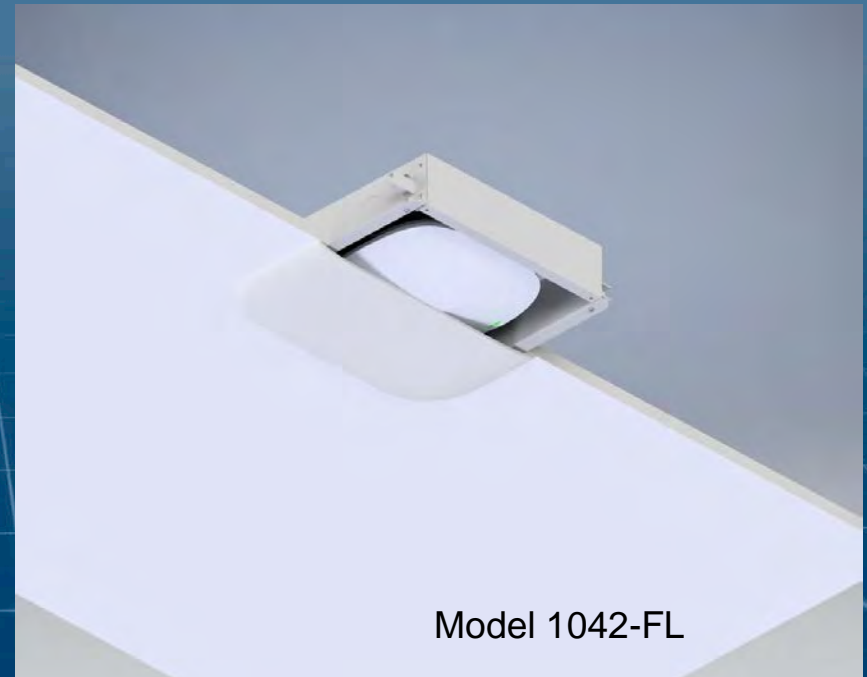
Model 1042-CCOAP3800

Hard Wall and Ceiling Recess AP Mounting Kits



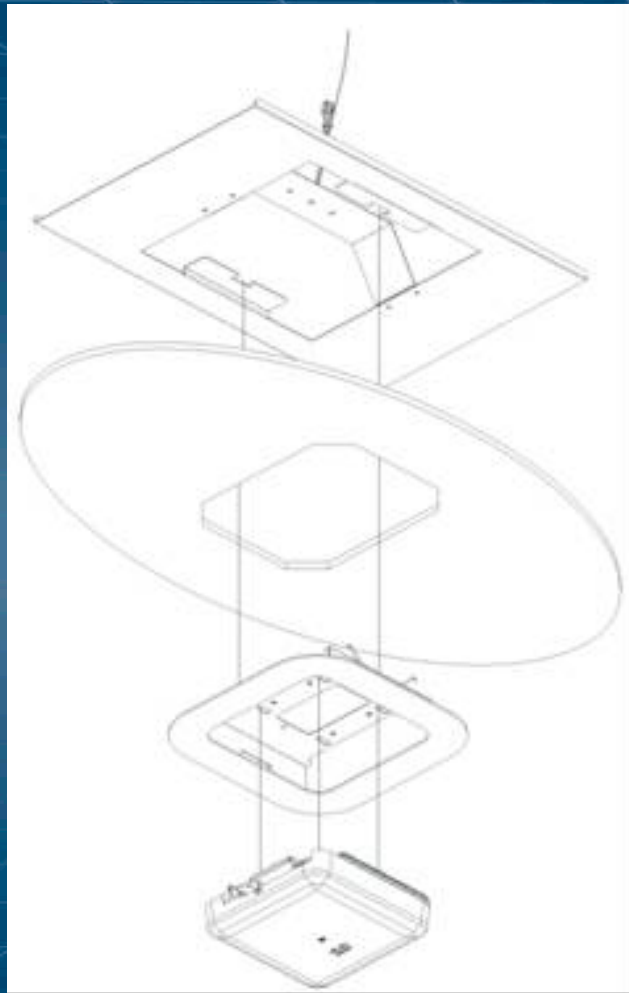
- Recess AP into drywall panel wall/ceiling (like recessed lighting).
- Aesthetic and economical, and simplifies AP service and replacement.
- All metal back box is plenum-rated, code compliant, UL listed.

- Interchangeable, low-profile, paintable ABS plastic cover is virtually transparent to wireless signals. Attaches to back-box without tools or loose hardware.



Model 1042-FL

Cloud and Suspended Panel Ceiling Recess AP Mounts



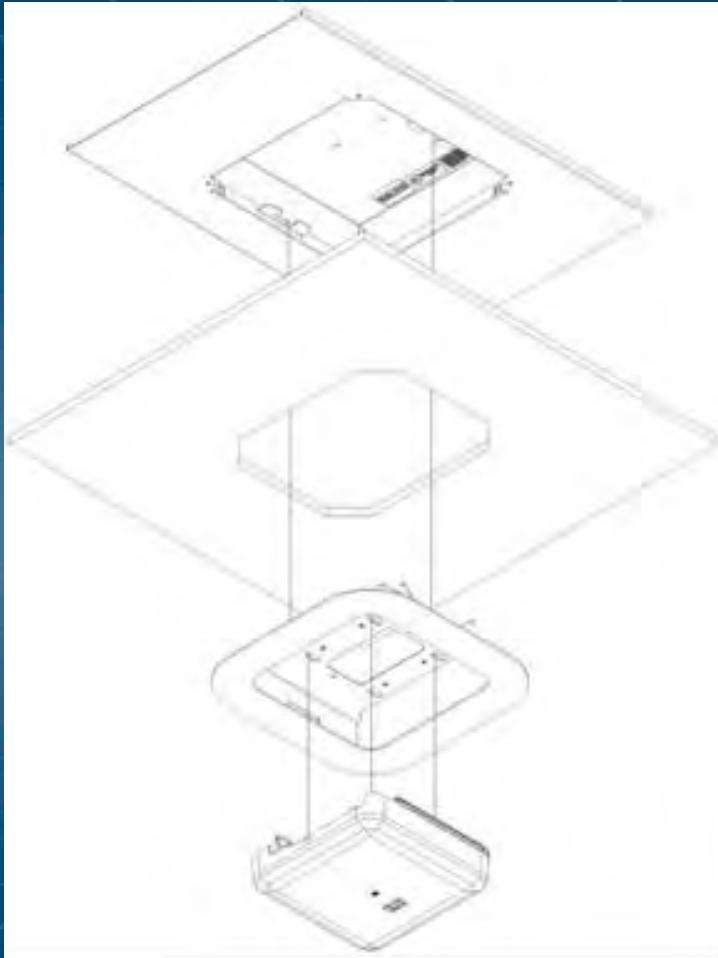
- Recess AP into ceiling panel, (like recessed lighting). Antenna face is exposed to room for optimal wireless coverage.
- Aesthetic and economical, and simplifies AP service and replacement.
- Included hanger wire prevents ceiling panel sagging.

- Interchangeable, attractive white, powder-coated steel AP trim. Attaches to bridge without tools or loose hardware.



Model 1040-CCOAP

Economical Suspended Ceiling Recess AP Mounts



- Recess AP into ceiling panel, (like recessed lighting). Antenna face is exposed to room for optimal wireless coverage.
- Aesthetic and economical, and simplifies AP service and replacement.
- All metal back box is plenum rated, code compliant, UL listed.

- Interchangeable, attractive white, powder-coated steel AP trim. Attaches to back-box without tools or loose hardware.



Model 1044-CCOAP3800

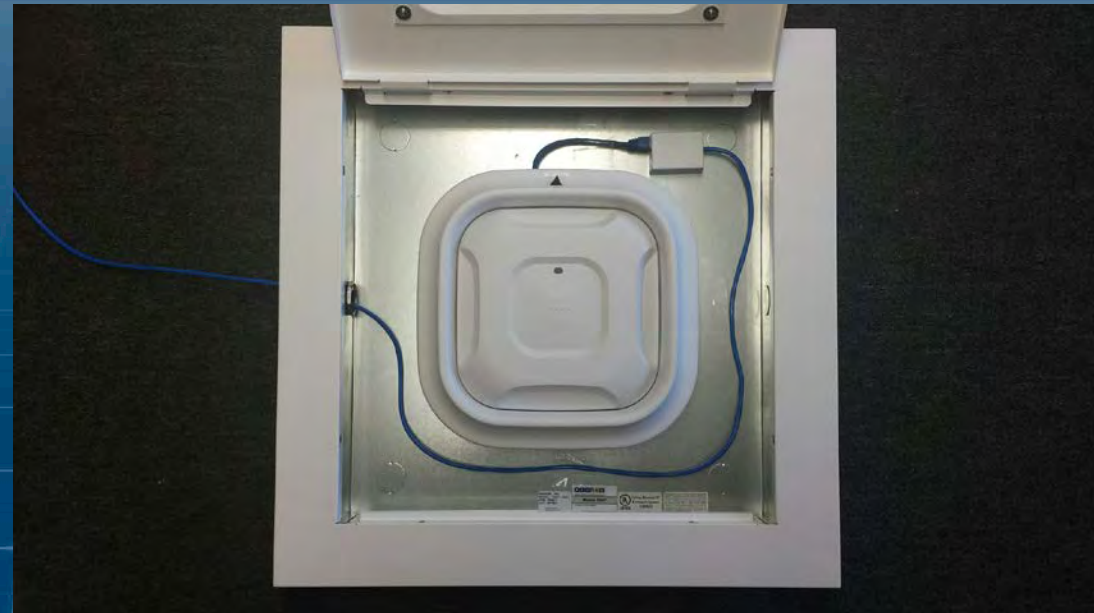
2' X 2' Suspended Ceiling Tile Enclosures (600 mm sq in Europe)



Model 1047-CCOAP3800

- Only AP antenna face is exposed for optimal wireless coverage.
- Conceal, terminate, and protect horizontal cabling, biscuit jacks, patch cords, etc.

- Locking suspended ceiling AP enclosures replace standard tile in grid.
- Attractive white, powder-coated steel flange matches many ceiling tiles. Plenum-rated, code compliant, UL listed.
- Large enough for all Cisco indoor APs, including AP with hyperlocation antenna or cellular module attached.

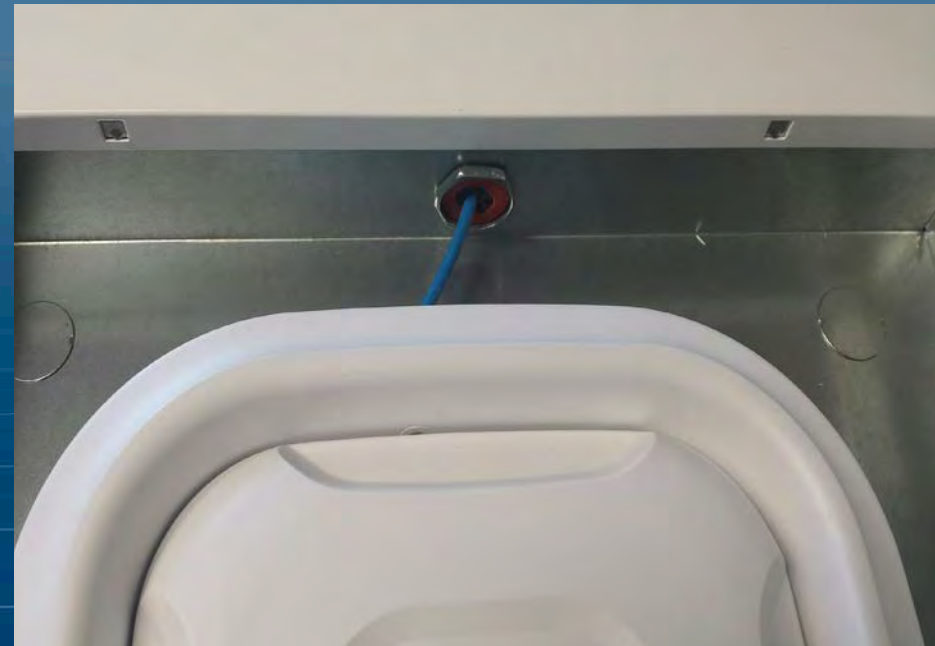


2' X 2' Suspended Ceiling Tile Enclosures (600 mm sq in Europe)



- AP mounts in locking, interchangeable doors. Doors swap out without tools or loose hardware.
- Service AP without opening plenum space. Protect AP and connectors from dust.

- Solid, dust-resistant back-box helps to simplify infection control (ICRA) procedures in hospitals.
- Firestop grommet seals cable egress hole, large enough for two Cat6A cables. Use non-plenum patch cord.



Outdoor WLAN Applications



Model 1020-RAB

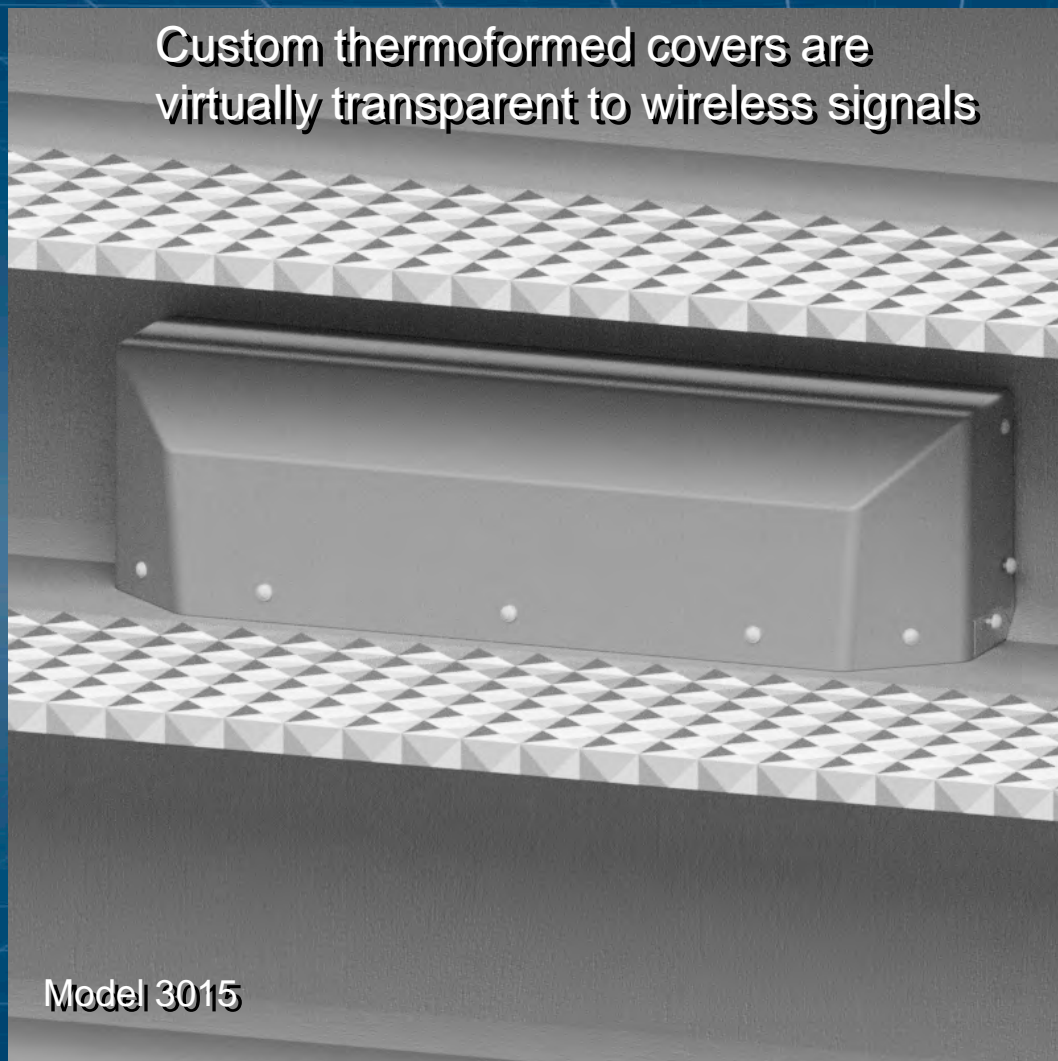
- Compact NEMA 4 waterproof AP enclosure with right-angle bracket
- Bracket acts as sunshield
- Rugged polycarbonate construction is virtually transparent to wireless signals



Model 1020-RAB with
pole mount kit

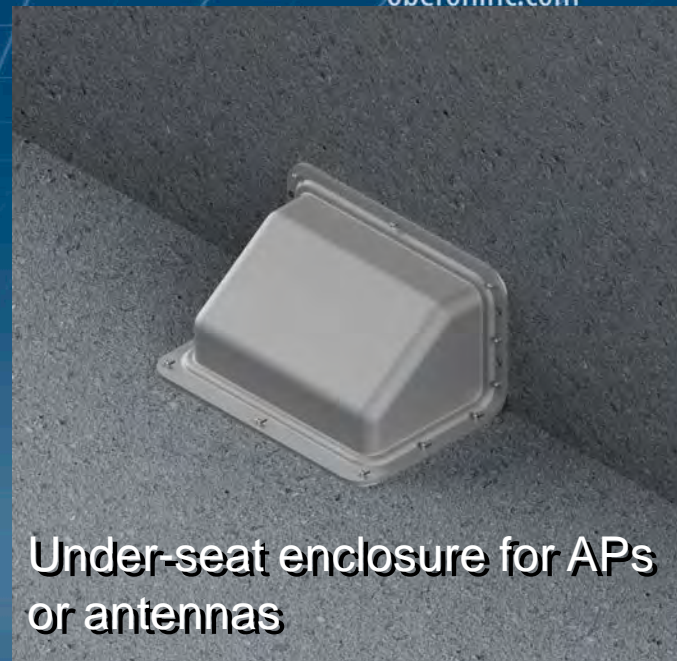
Outdoor WLAN Applications

Custom thermoformed covers are
virtually transparent to wireless signals



Model 3015

Under-seat enclosure large enough for
both APs and antennas



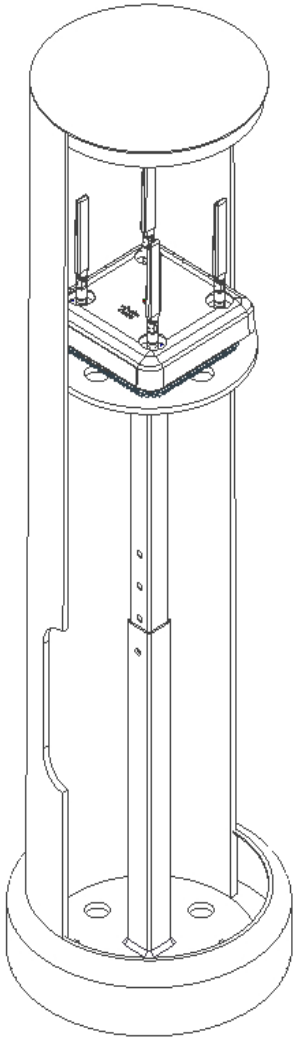
Under-seat enclosure for APs
or antennas



Model 3010

Wi-Fi Bollard

Model 3030-BLK



- Mount anywhere APs are required: parks, courtyards, green spaces, pool side, pathways, lobbies, etc.
- Conceal indoor or outdoor rated APs, panel and dipole antennas, cabling, power supplies, media converter, etc.
- Protects APs and associated cabling from sun, weather, and tampering.
- Simple, aesthetic design. Rugged fiberglass shaft is virtually transparent to wireless signal.

Why Oberon Products?

- Oberon is a Registered Cisco Solution Partner
- Cisco recommends use of Oberon products in its Wi-Fi deployment guide
- Oberon designs AP mounting solutions only
- Products designed by people with wireless LAN design experience
- Products available through our international distributor Anixter