



OUR FAVORITE NEW FEATURES IN SOLID EDGE 2023

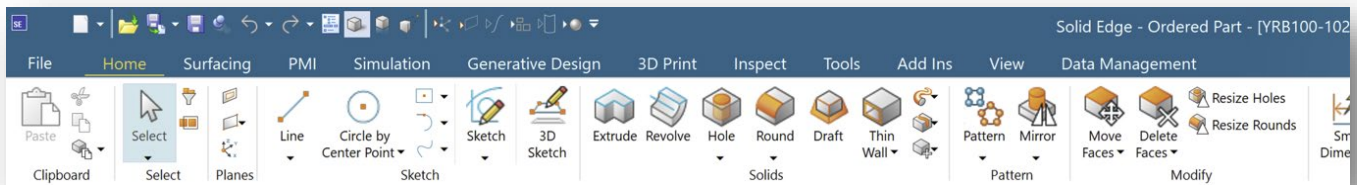
Our Solid Edge Expert's Top 5 (Plus 1) Enhancements

By Jason Walker, Application Engineer, CAM Logic



WORK SMARTER, NOT HARDER WITH THE UPDATED USER INTERFACE

Siemens has given Solid Edge 2023 a new look and feel with a revamped User Interface (UI) and streamlined workflows. The UI now has a modern update to match the way you work, with intuitive command bars and toolbars, updated personalization options, and improved modeling workflows.

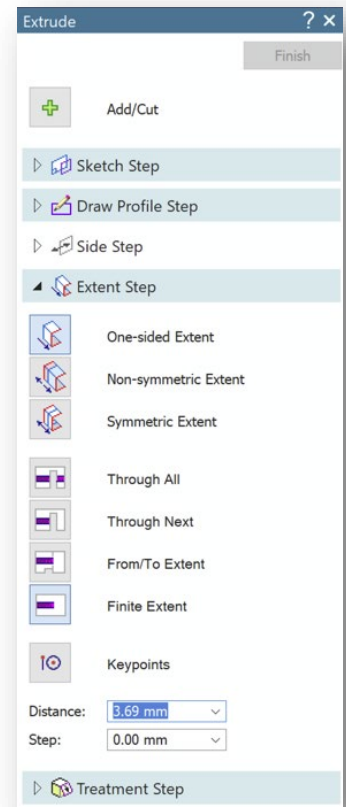


I like that it matches the rest of the Siemens portfolio and provides a consistent environment and workflow for users.

- Vertical Command Bar** – This is a great feature for new users as it is more readable and makes it easier to know exactly what Solid Edge is asking for.
- Context Tool Bar** – Speed up your workflow, less mouse clicks, shorter mouse travel.

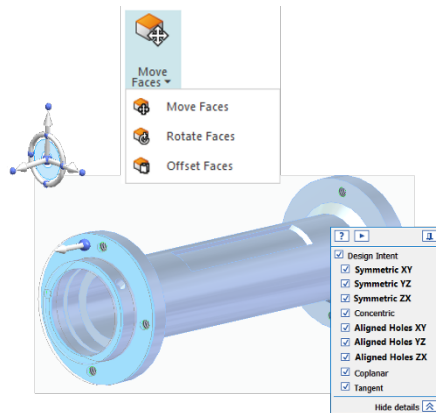
USEFULNESS: ★★★

COOL FACTOR: ★★★☆



REDUCE THE NUMBER OF CLICKS TO ACHIEVE COMMON WORKFLOWS

Save time with the new improvements to Ordered modeling, bringing Synchronous tools to Ordered users, and increasing productivity.



I like that it adds versatility to designing parts by adding some synchronous functionality to the ordered environment.

USEFULNESS: ★★★

COOL FACTOR: ★★★

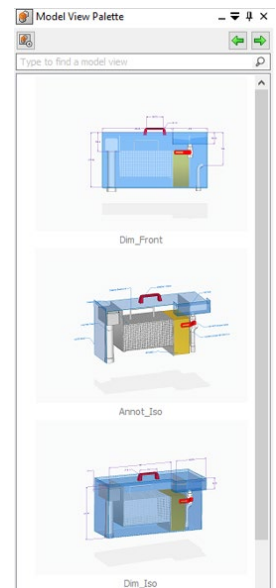
DETAIL 3D MODELS FASTER AND EASIER THAN EVER BEFORE

With the upgrades to the model view palette.

I like that you either pin the window to have it readily available or open from the ribbon. Instant visibility of model views as well as ease of editing the different model views. Not only can you see the different views, but you can also activate and edit right from the window.

USEFULNESS: ★★★

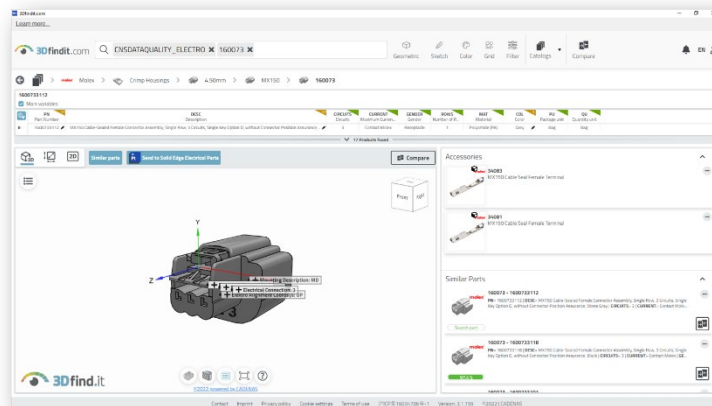
COOL FACTOR: ★★★



Solid Edge Portfolio

IMPROVE YOUR ABILITY TO CREATE SHAPES

The new Embedded Library Portal is based online and provides access to thousands of parts. There's currently over 20,000 electrical parts listed on the Cadenas/3Dfindit.com.



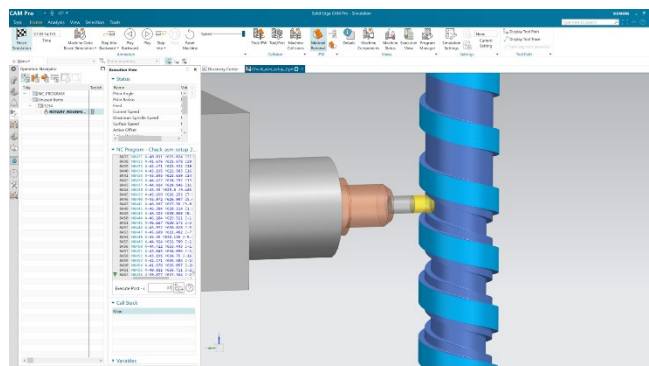
I love this feature because it eliminates a large amount of time and effort that it traditionally takes to create and maintain library parts and symbols.

USEFULNESS: ★★ ★

COOL FACTOR: ★★ ★

SAVE TIME WITH MORE EFFICIENT MATERIAL REMOVAL

Provided by a new Rotary Machining Add-on for 4-Axis machining and new Wire EDM functionality.



I love this feature because it improves your ability to create shapes, even those that would otherwise be too expensive or even impossible.

“Smart” Machine Simulation Kits – Enables a digital representation of the entire machine “Digital Twin” which reduces development and maintenance costs. Currently there are 35 Smart Machine kits available. Instead of having just the tool and the simulation, it brings a model of the whole machine.

USEFULNESS: ★★★

COOL FACTOR: ★★★

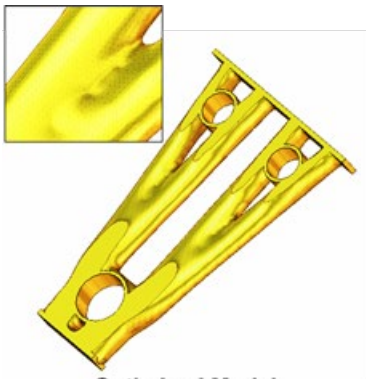
ELIMINATE REVERSE ENGINEERING

Simulation of Convergent Models enables users to run simulations on generative designed optimized models, converted mesh models, and .STL models.

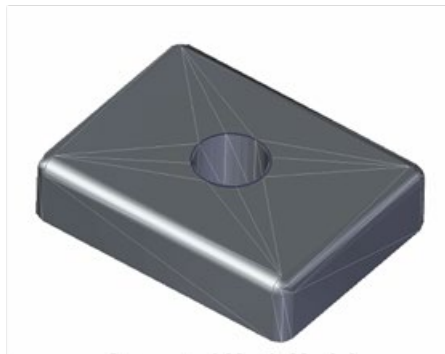
I like that this feature will allow users to save time and effort by eliminating reverse engineering that would normally be needed to run simulations.

USEFULNESS: ★★★

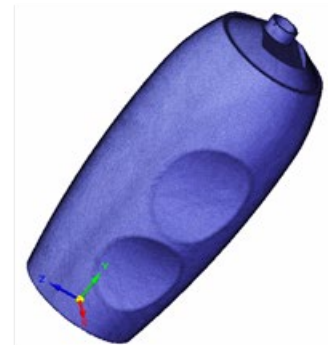
COOL FACTOR: ★☆☆



Optimized Model



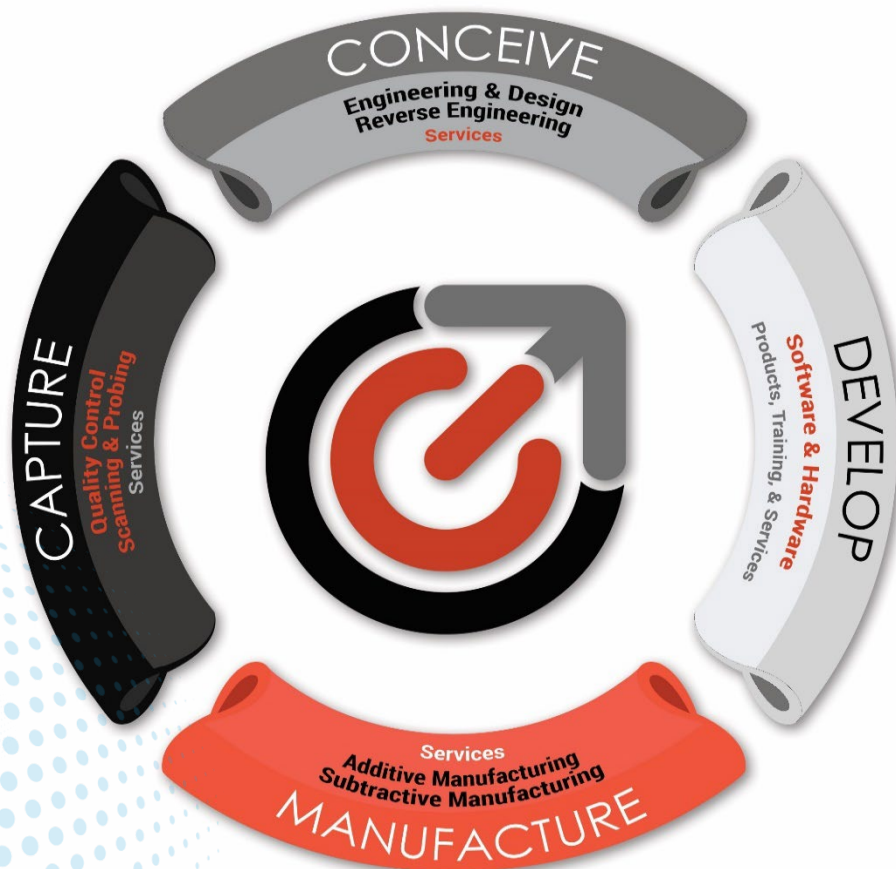
Converted Mesh Model



'STL' Model

#EMPOWERINGINNOVATION

CAM Logic, Inc. is a holistic engineering solutions provider utilizing PLM software, additive and subtractive manufacturing, and quality control. Leveraging over 25 years of CAD/CAM/CAE expertise to provide unparalleled products & services to develop and support design through manufacturing. With a unique approach to design, engineering, and manufacturing, plus, unmatched craftsmanship, CAM Logic aims to provide you with the right methodology and technology to fit your needs.



CAM Logic, Inc. ➤ 1751 Harmon Road, Auburn Hills, MI 48326 ➤ 248.969.9201 ➤ www.camlogic.com

CERTIFIED
WOMEN
OWNED