



# ALZHEIMER'S AND THE LGBTQ+ COMMUNITY:

## A CONVERSATION WITH LUNAE CHRYSANTA AND TAYLOR BOUTELLE



The LGBTQ+ community may face particular challenges related to Alzheimer's and dementia. Age is the greatest risk factor for Alzheimer's disease and an estimated 2.7 million LGBTQ+ people are over age 50. In this session you'll learn about Alzheimer's and dementia, understand the needs and challenges unique to the LGBTQ+ community and share recommendations for working with LGBTQ+ individuals living with dementia, including how to access community resources from trusted organizations Openhouse, Family Caregiver Alliance and the Alzheimer's Association.

**Join us!**

Register at  
[tinyurl.com/LGBTAlzConvo](https://tinyurl.com/LGBTAlzConvo)



**This program is intended for people caring for LGBTQ elders with dementia including love ones.**

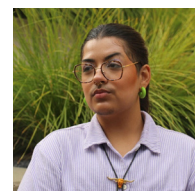
**Date: Tuesday, June 11, 2024**

**Time: 1-3 p.m.**

**Location: Virtual via Zoom**

### ABOUT OUR SPEAKERS:

**Lunae Chrysanta (He/They)**  
Manager of Training and Transformation, Openhouse



**Taylor Boutelle (They/Them)**  
Trainer I, Openhouse



Lunae and Taylor are experts in the field and will bring their perspectives of community based support and LGBTQ needs together in this informative session. Las Vegas, School of Public Health, Department of Social and Behavioral Health.