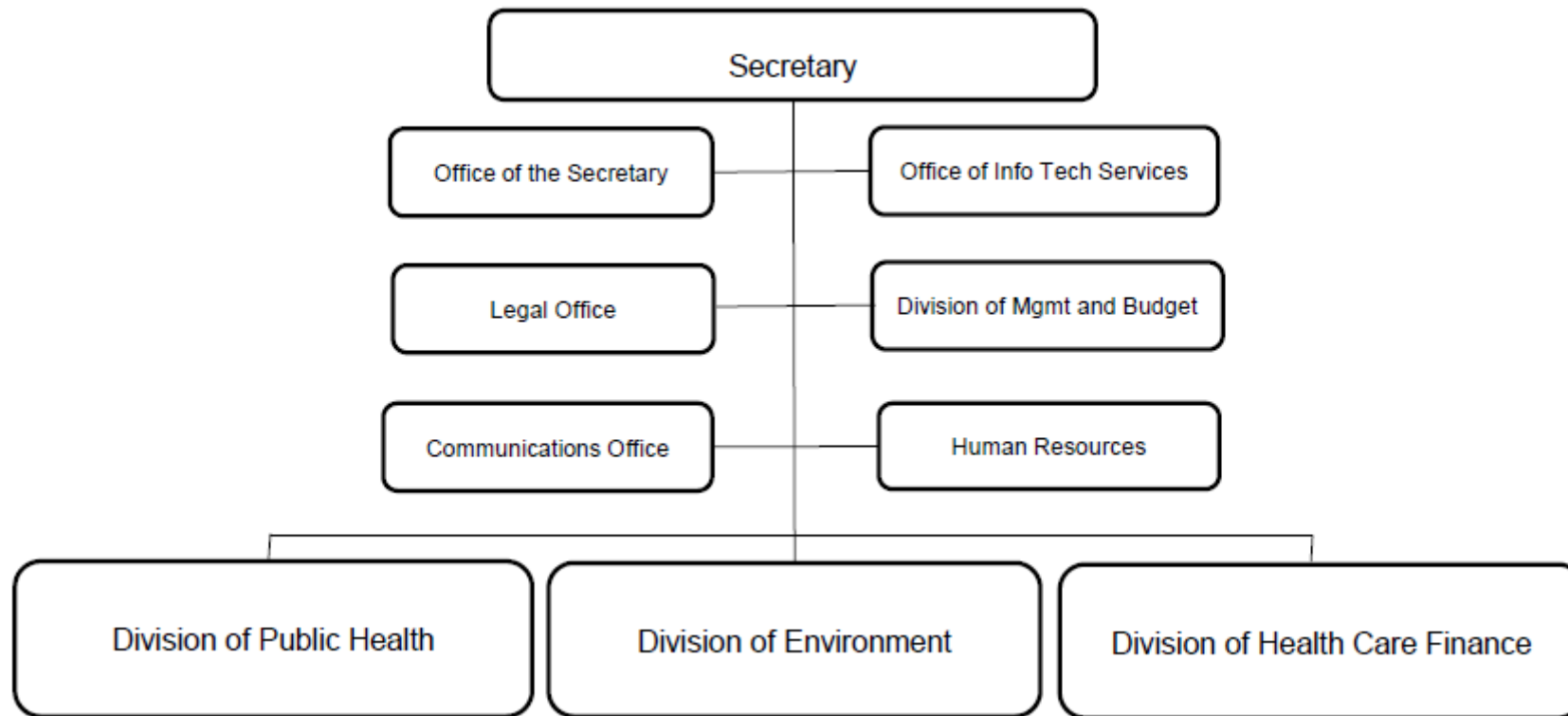


Kansas Department of Health and Environment



Division of Environment Budget Senate Agriculture and Natural Resources

Kansas Department of Health and Environment Organizational Chart



Mission and Vision



Agency Mission

- To Protect and Improve the Health and Environment of all Kansans

Division of Environment protects Kansans by ensuring we have:

- Clean air to breathe
- Clean water to drink
- Clean soil to live on

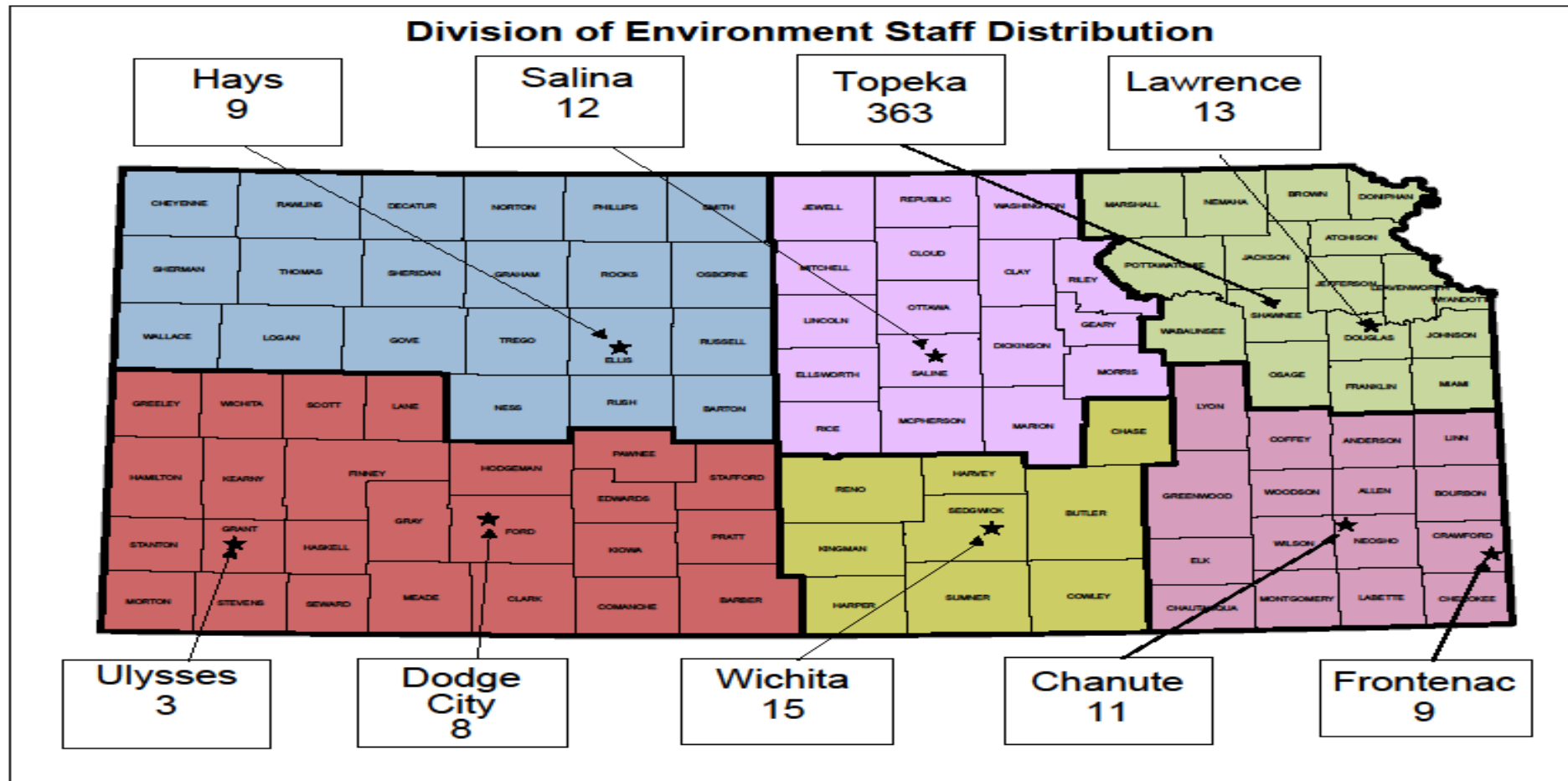
Federal Rules Implemented



• **Federal Environmental Acts**

- Clean Water Act - 1972
- Safe Drinking Water Act - 1974
- Comprehensive Environmental Response, Compensation and Liability Act (CERCLA, aka Superfund Law) - 1980
- Resource Conservation and Recovery Act (RCRA) - 1976
- Surface Mining Control and Reclamation Act (SMCRA) – 1977
- Clean Air Act - 1963

Division of Environment Staffing



Division of Environment Bureaus

DIVISION OF ENVIRONMENT

KANSAS HEALTH AND ENVIRONMENT LABORATORY

- Environmental Testing
- Health Testing
- Breath Alcohol
- Clinical and Environmental Laboratory Certification

BUREAU OF WATER

- National Pollutant Discharge Elimination System Permitting
- Total Maximum Daily Load
- Water Quality Standards
- Stream and Lake Monitoring
- HAB Response
- Public Water Supply System Supervision
- Underground Injection Control
- Underground Hydrocarbon Storage
- Clean Water and Drinking Water State Revolving Fund

BUREAU OF WASTE MANAGEMENT

- Hazardous Waste
- Solid Waste
- Waste Reduction
- Tire Program
- Disaster Response Debris Management

BUREAU OF ENVIRONMENTAL REMEDIATION

- Superfund
- Surface Mining
- State Cleanup Programs
- Redevelopment Programs

BUREAU OF ENVIRONMENTAL FIELD SERVICES

- District Offices
- Livestock Waste Management
- Watershed Restoration and Protection Strategy
- Drinking Water Protection Program
- Local Environmental Protection Program
- Clean Water Act 401 Certification

BUREAU OF AIR

- Air Permitting
- Asbestos
- Lead Program

Bureau of Air



- Air Permitting Program
- Asbestos Program
- Lead Program for Homes



- Underground Storage Tanks
- Superfund and State Clean up Programs
- Redevelopment Programs
- Surface Mining Restoration



Bureau of Waste Management



- Landfills
 - Municipal, Construction and Debris, Industrial
- Hazardous Waste
 - Storage, Transportation, Disposal
- Composting
- Recycling Promotion
- Household Hazardous Waste Program
- Tire Program



Bureau of Environmental Field Services



- District Office Operations
- Livestock Waste Management Section – Feedlots
- Watershed Restoration and Protection Strategy
- Drinking Water Protection Program



- Waste Water Treatment and Discharges
- Drinking Water System Administration
- Surface Water Quality Standards
- State Revolving Loan Programs



Kansas Health and Environment Laboratory

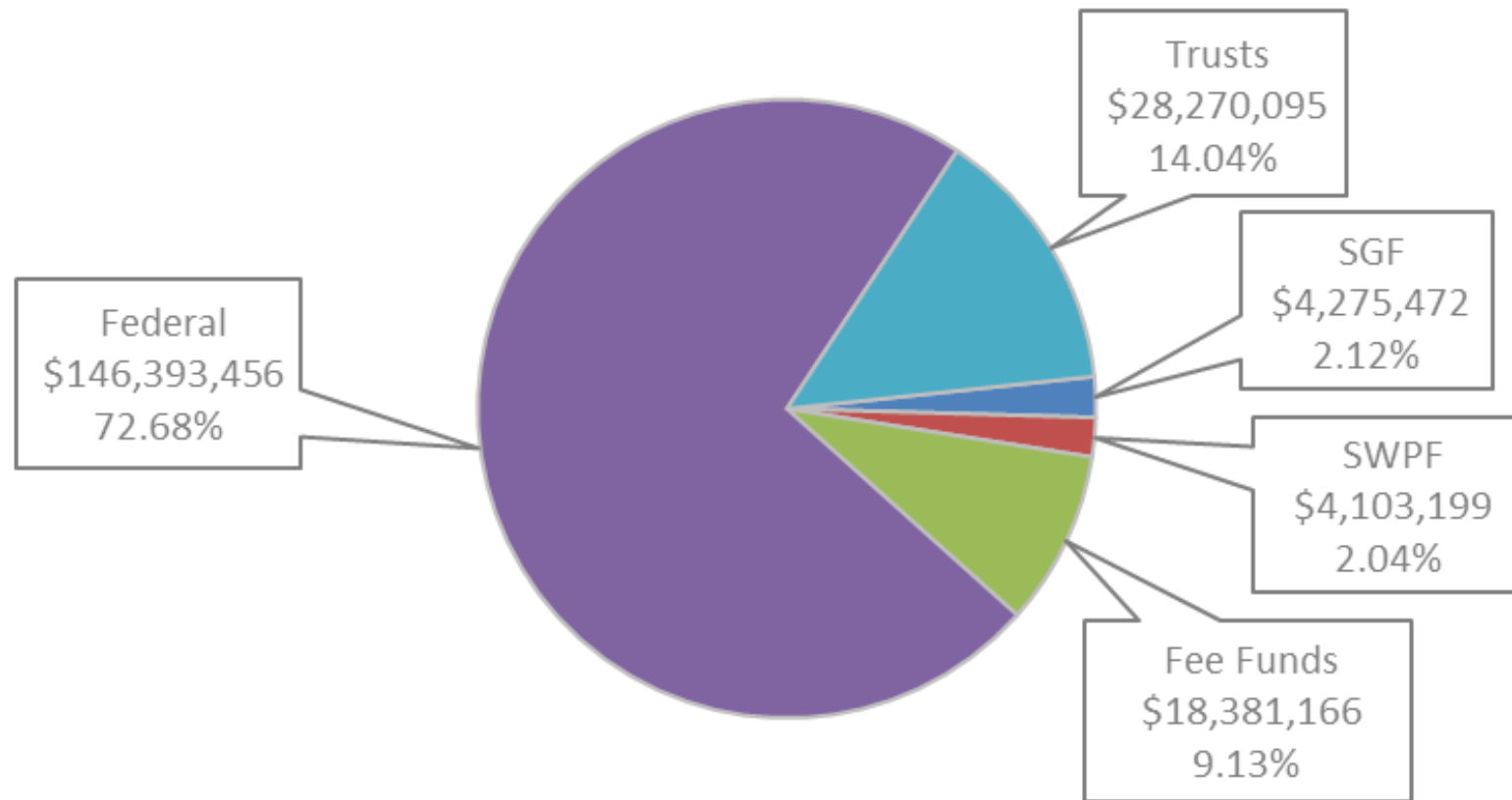


- Environmental Sampling Testing
- Health Sample Testing
- Breath Alcohol Program
- Lab Certification Programs



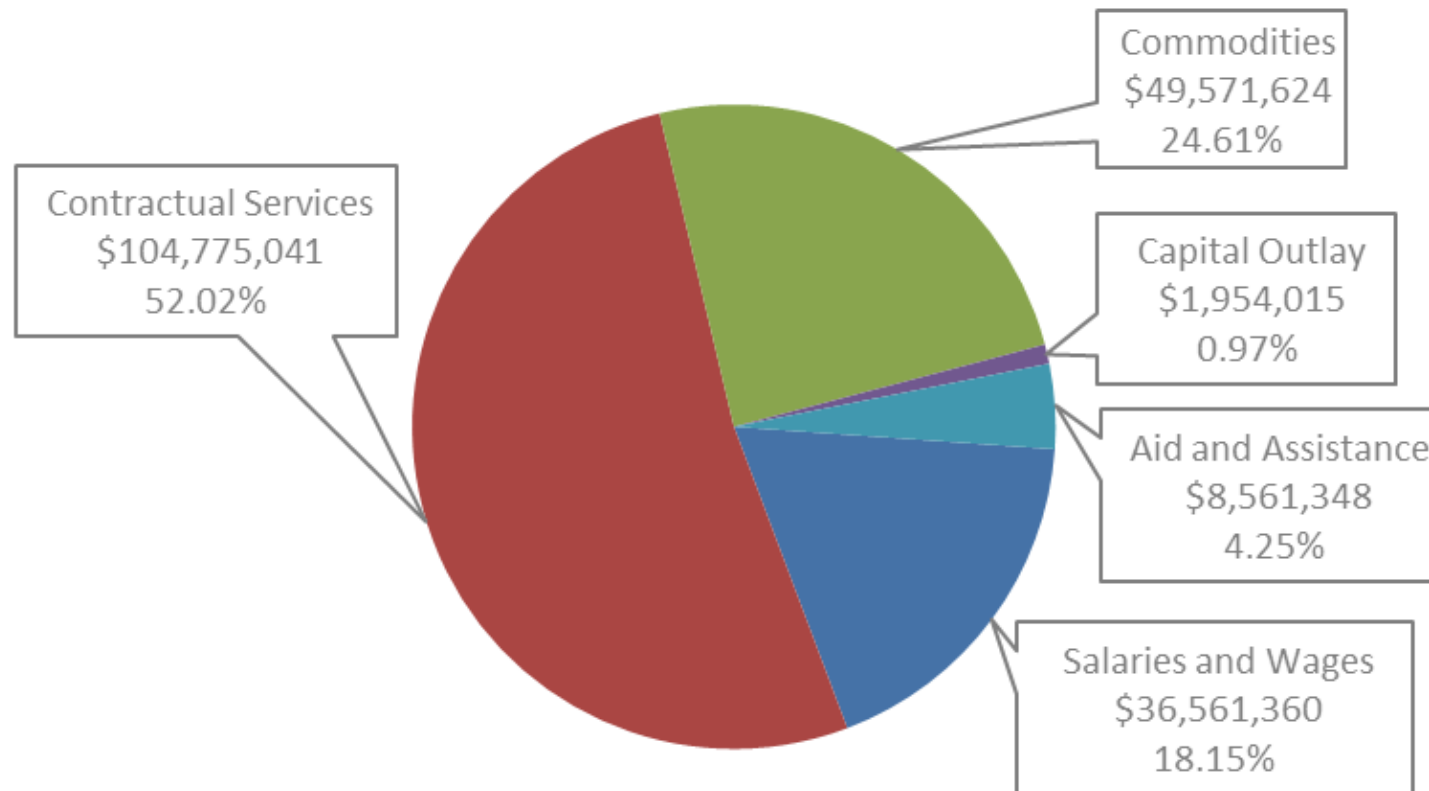
Funding Sources for Fiscal Year 2022

FY 2022 Environment Funding Sources



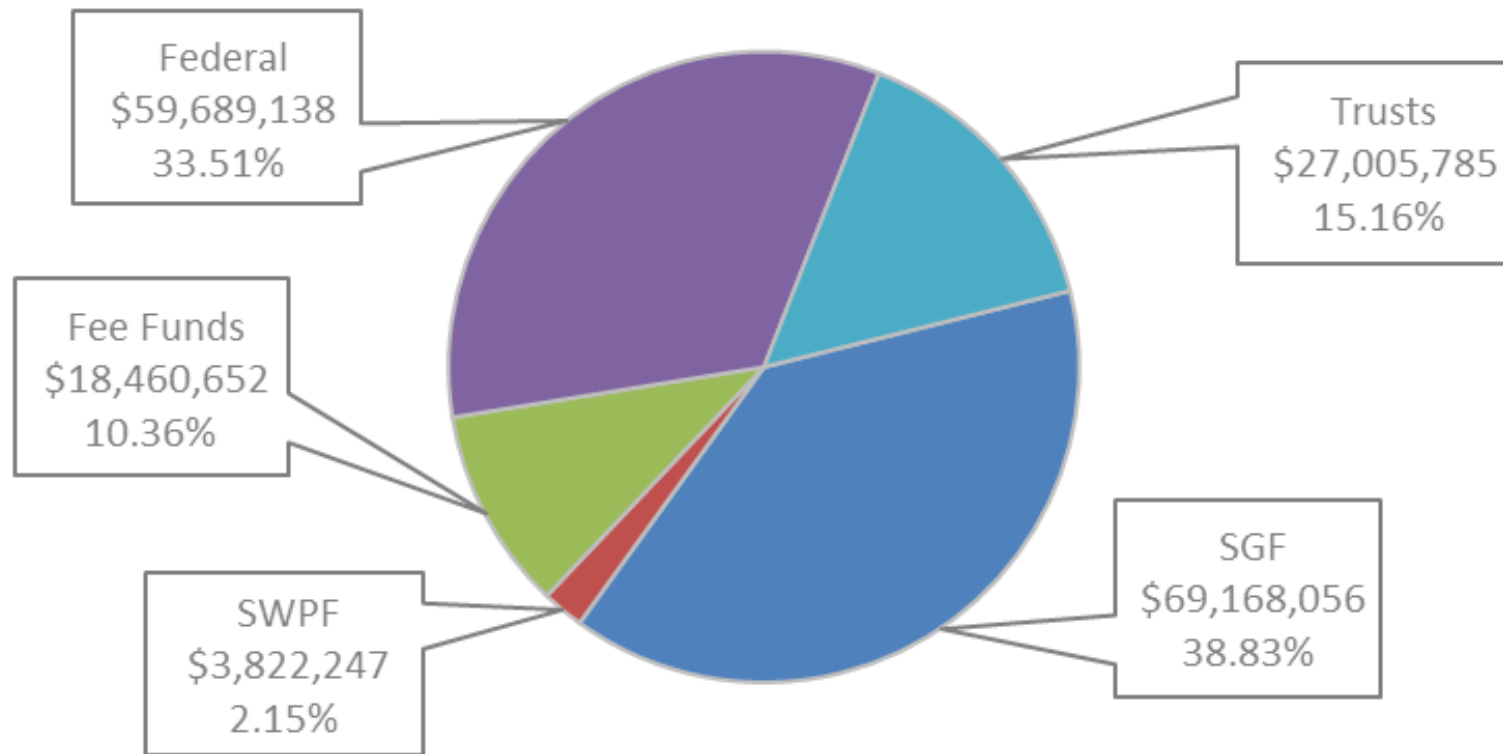
Expenditures for Fiscal Year 2022

FY 2022 Environment Expenditures



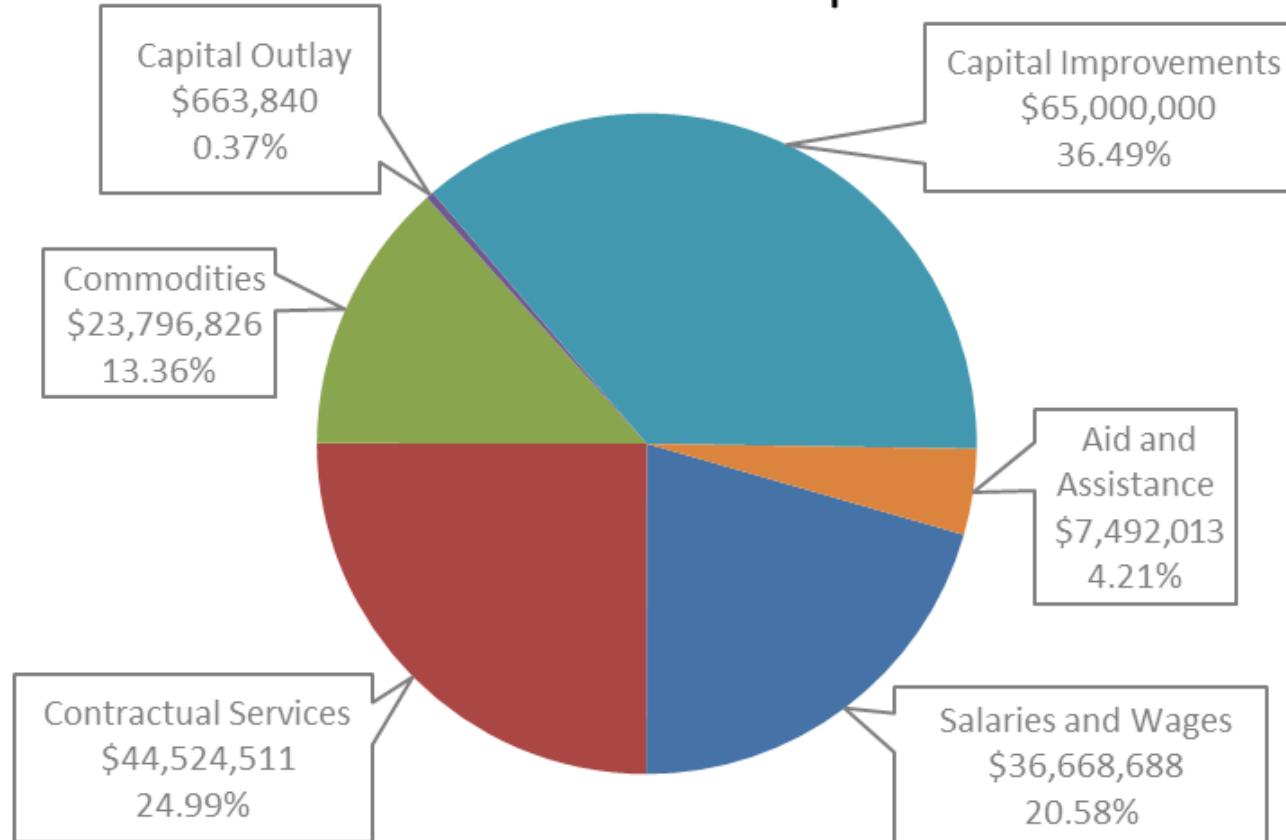
Funding Sources for Fiscal Year 2023

FY 2023 Environment Funding Sources



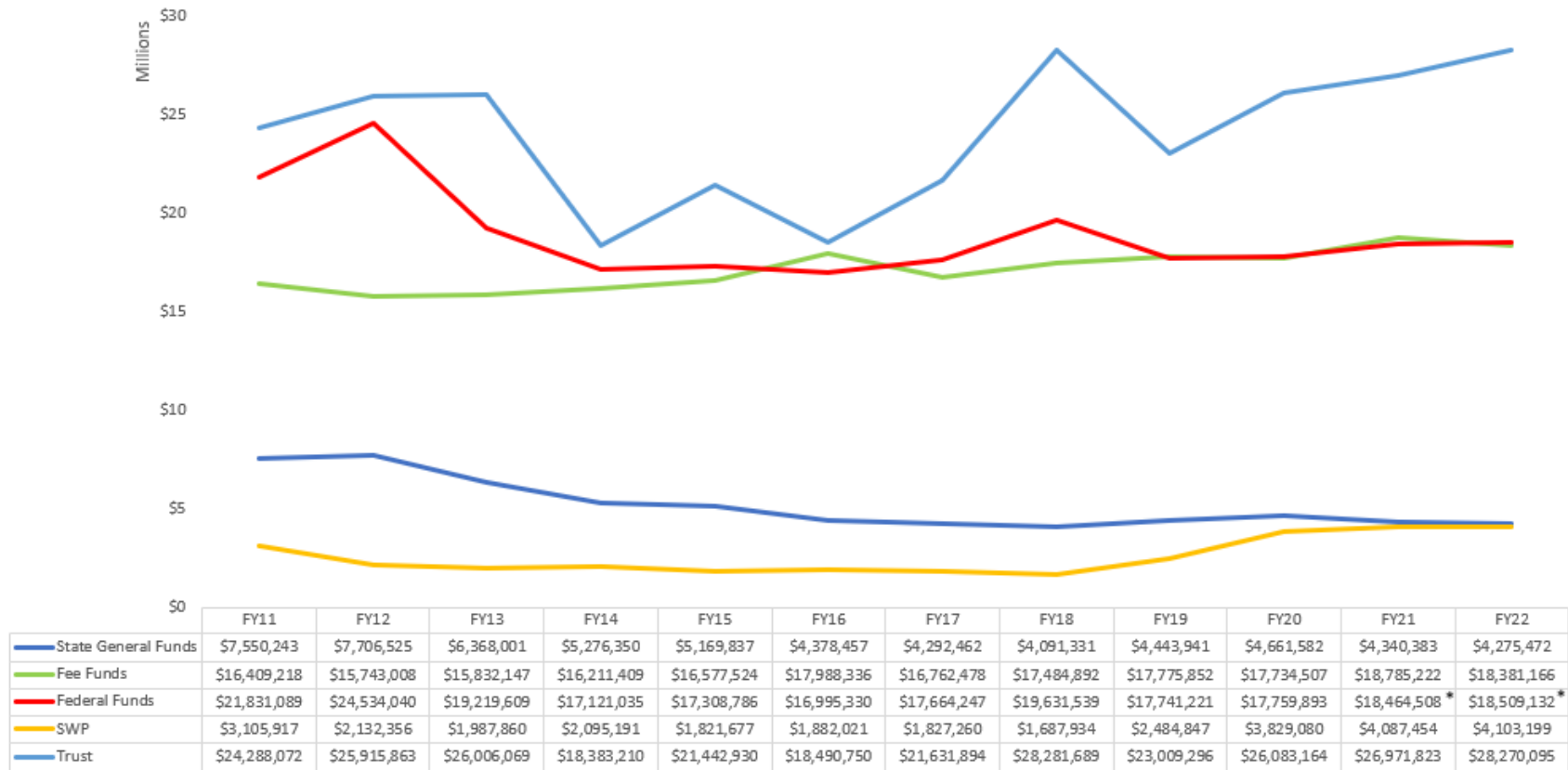
Expenditures for Fiscal Year 2023

FY 2023 Environment Expenditures



Expenditures by Funding Source History

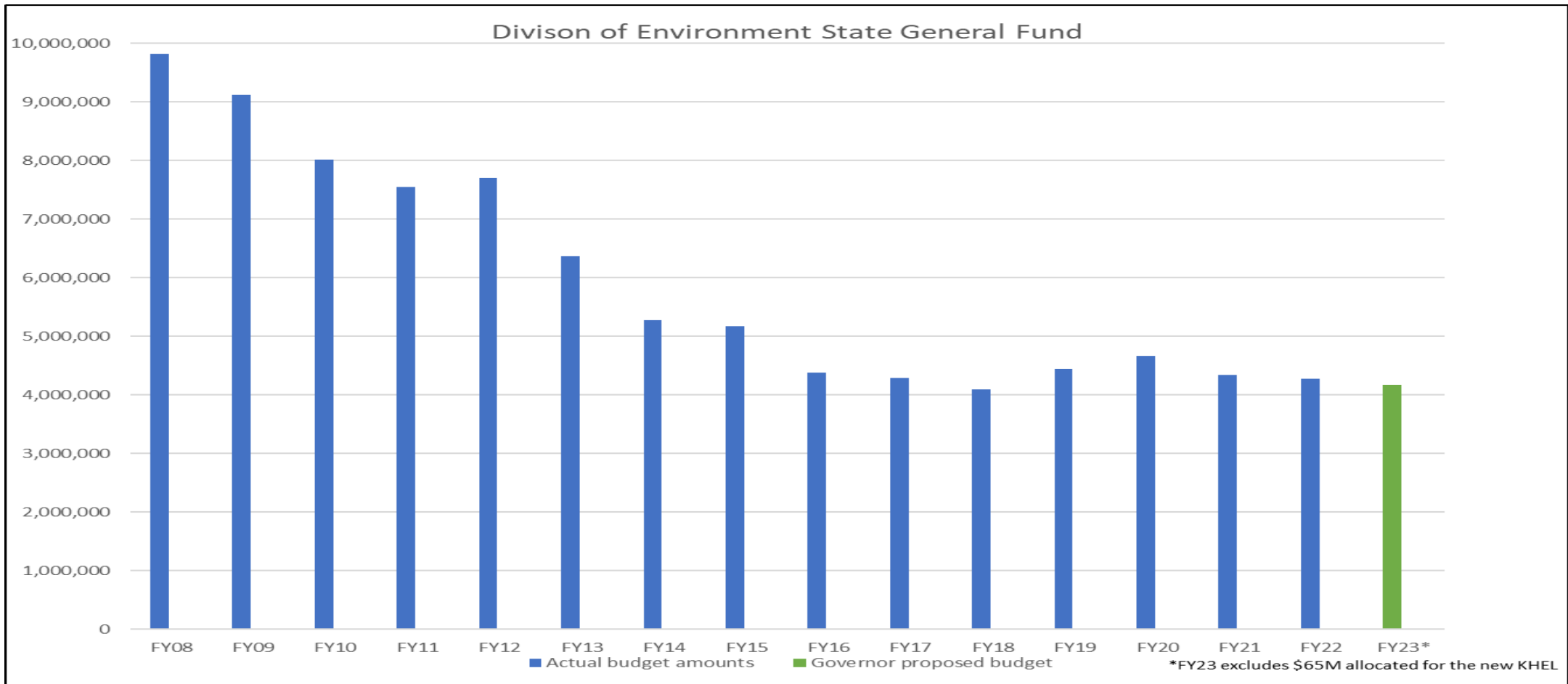
Division of Environment Expenditures



*FY21 and FY22 Federal Funds minus COVID \$

State General Funds Fee Funds Federal Funds SWP Trust

State General Fund History



Supplemental & Enhancement Requests



- FY 2022
 - Laboratory Equipment (SGF) - \$225,000
- FY 2023
 - Laboratory Equipment (SGF) - \$230,000
 - Drinking Water Protection (SWPF) - \$350,000
 - Watershed Restoration & Protection Strategy (SWPF) - \$269,116

Federal Infrastructure Funding



Bureau of Water

- \$ 79.4 million this year
 - State Revolving Loan Program (\$37 million)
 - Lead Line Replacement (\$32.8 million)
 - Emerging Contaminants (\$9.6 million)
- **Estimated \$459.3 million over the 5 year period**

Federal Infrastructure Funding



Bureau of Environmental Remediation

Surface Mining Section:

\$2.8 Million Normal Annual Federal Funding

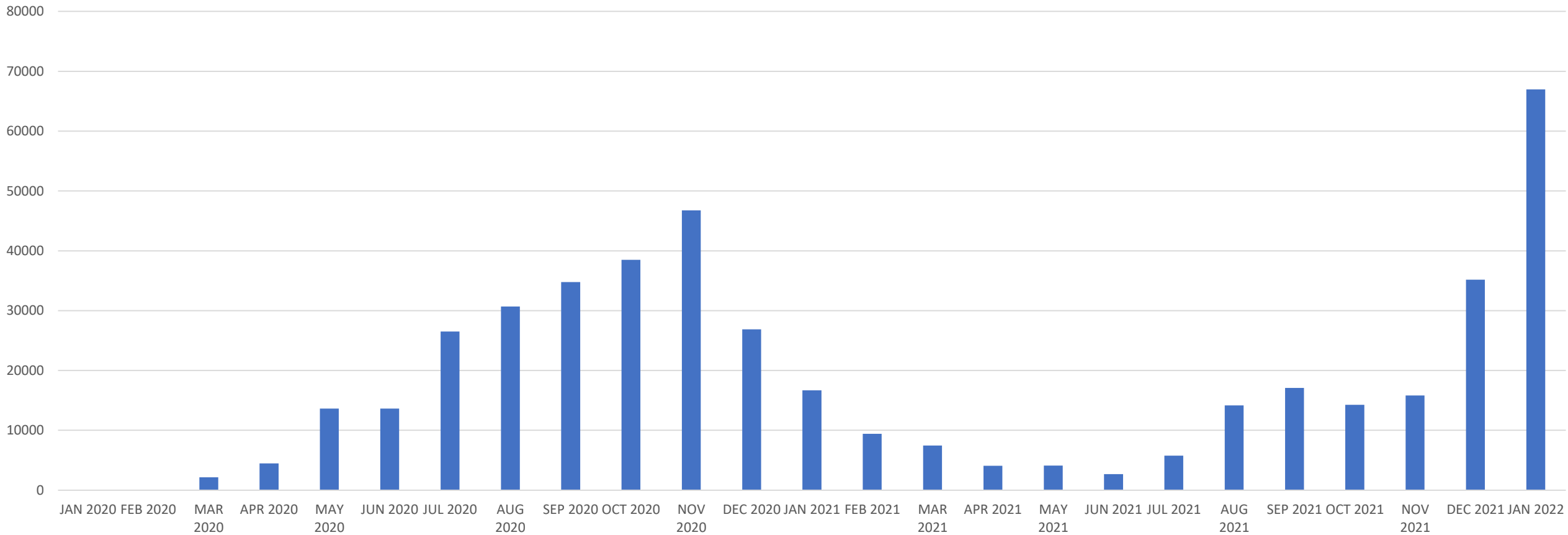
\$4.7 Million Additional Funding

Additional Funding is anticipated for the next 15 years.

COVID-19 Samples



Covid Samples To Date



Accomplishments



- In 2021, KDHE helped Wichita in obtaining up to \$547,000,000 in low interest financing to construct their new Northwest Drinking Water Treatment Plant.
- Since 2019, KDHE has provided \$22,000,000 of loans for water and sewer improvements to municipalities with less than 1000 population and \$7,900,000 of the \$22,000,000 was provided as loan forgiveness to 13 municipalities.
- KDHE provided \$1,770,000 to replace aged diesel school busses for local school districts.
- KDHE provided the Kansas Department of Transportation \$2 Million from the Volkswagen Settlement Trust Fund to support vehicle electric charging stations.
- KDHE was provided authority to build a new laboratory in Parking Lot 4.

Challenges



- Employee Recruitment and Retention
- New Program Funding
 - Lead & Copper Rule
 - Emerging Contaminants (Per fluorinated Chemicals, 1-4 Dioxane)
- Small Drinking Water System Compliance

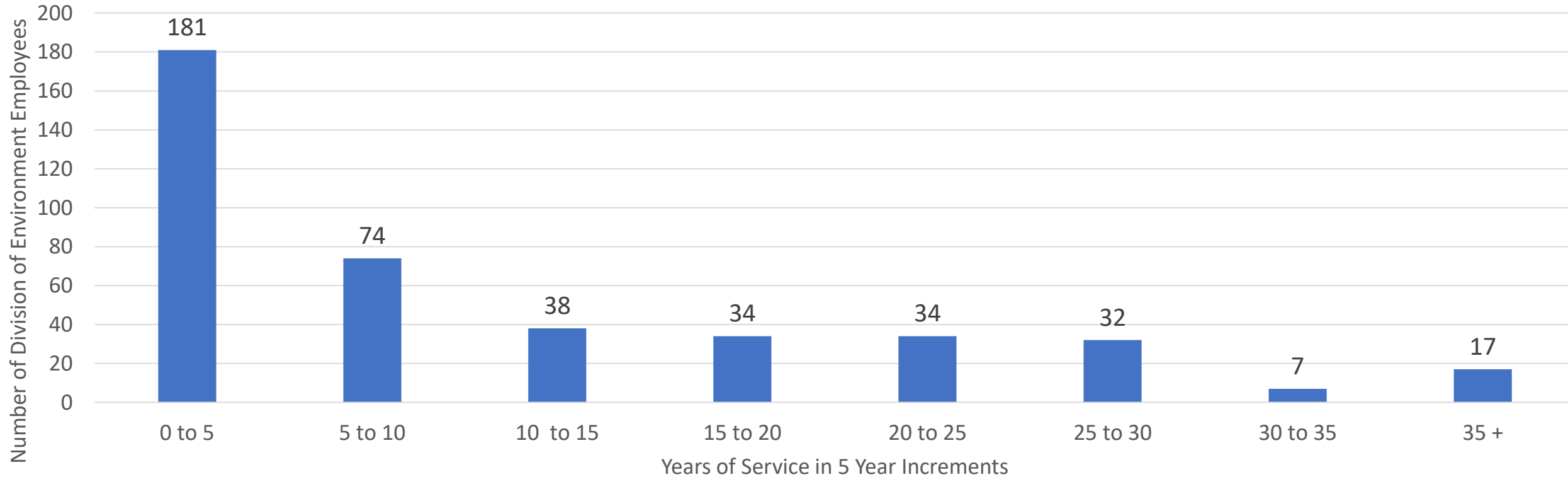
Recruitment and Retention



- Employee recruitment continues to be difficult
- Employee retention is challenging
- Professional staff (geologists, chemists, engineers, etc.) often leave shortly after completing their training at KDHE

Recruitment and Retention

Division of Environment Employee's Years of Service
Total Number of Employees = 417





Leo G. Henning

Deputy Secretary and
Director of Environment

Leo.Henning@ks.gov

785-296-1535

Thank you!