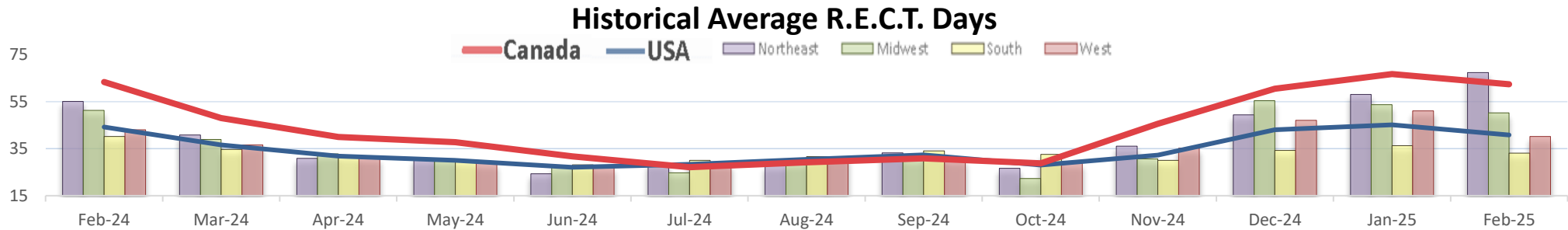
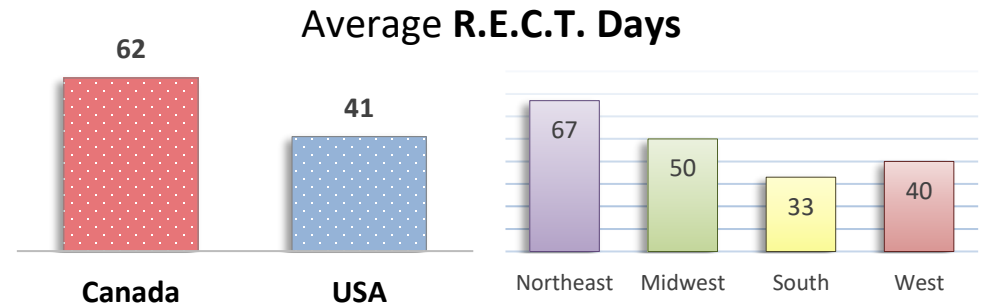


REPAIR EVENT CYCLE TIME (R.E.C.T.)



RV DASHBOARD - February 2025

	Canada	USA	Northeast	Midwest	South	West
Average R.E.C.T. Days	62	41	67	50	33	40
Median R.E.C.T. Days	21	15	22	18	14	15
25% Waited Over	111	49	96	83	40	49
Total Dealerships	46	331	46	82	157	92
Work Orders Reviewed ¹	2,118	21,856	2,118	3,280	10,734	5,724



Average R.E.C.T. Days based on BILLING TYPE							Average R.E.C.T. Days based on PARTS AVAILABILITY																																		
	Canada	USA	Northeast	Midwest	South	West		Canada	USA	Northeast	Midwest	South	West																												
Warranty Coverage	81	52	78	63	42	53	Out-Of-Stock	103	68	102	82	57	69																												
No Coverage	53	32	56	40	26	29	In Stock ²	45	25	47	33	20	22																												
Start Days	20	10	14	13	8	8	Identification Days	45	32	41	41	27	33																												
Job Days	22	18	19	22	15	20	Lead Time Days	29	19	23	22	16	21																												
Delivery Days	16	10	17	13	7	10	Repair Wait Days	28	15	18	20	13	14																												
Percentage of Work Orders with Warranty Coverage							Percentage of Work Orders with Out-Of-Stock Parts																																		
<table><thead><tr><th>Region</th><th>Percentage</th></tr></thead><tbody><tr><td>Canada</td><td>35%</td></tr><tr><td>USA</td><td>45%</td></tr><tr><td>Northeast</td><td>52%</td></tr><tr><td>Midwest</td><td>45%</td></tr><tr><td>South</td><td>44%</td></tr><tr><td>West</td><td>46%</td></tr></tbody></table>							Region	Percentage	Canada	35%	USA	45%	Northeast	52%	Midwest	45%	South	44%	West	46%	<table><thead><tr><th>Region</th><th>Percentage</th></tr></thead><tbody><tr><td>Canada</td><td>30%</td></tr><tr><td>USA</td><td>37%</td></tr><tr><td>Northeast</td><td>37%</td></tr><tr><td>Midwest</td><td>35%</td></tr><tr><td>South</td><td>36%</td></tr><tr><td>West</td><td>39%</td></tr></tbody></table>							Region	Percentage	Canada	30%	USA	37%	Northeast	37%	Midwest	35%	South	36%	West	39%
Region	Percentage																																								
Canada	35%																																								
USA	45%																																								
Northeast	52%																																								
Midwest	45%																																								
South	44%																																								
West	46%																																								
Region	Percentage																																								
Canada	30%																																								
USA	37%																																								
Northeast	37%																																								
Midwest	35%																																								
South	36%																																								
West	39%																																								
Canada USA Northeast Midwest South West							Canada USA Northeast Midwest South West																																		

¹ - Work Orders with inaccurate or omitted dates, RECT exceeding two years and all internals are excluded. ² - In stock or no part needed