

# Come to Albuquerque's Fall Sectional !

November 5-7, 2021

Duke City Bridge Center

8616 Northeastern Blvd NE, Albuquerque NM

505-271-2877

Director: Carolyn Pinto

Chair: Susy Law ([susanlaw009@comcast.net](mailto:susanlaw009@comcast.net))

Partnerships: Bob Zipp ([zipp\\_bridge@yahoo.com](mailto:zipp_bridge@yahoo.com))

Corrales in Pink (Photo courtesy of Bill Tondreau  
[Sumner&Tene.com](http://Sumner&Tene.com))

Entry Fees: ACBL Members \$10.00 per session; Juniors (under age 26) \$5.00 per session

ACBL members whose membership fees are not up to date - \$14.00 per session

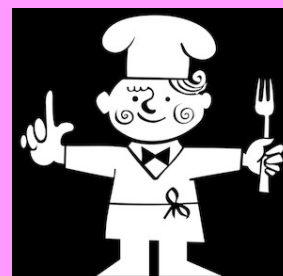
Sunday entry fees: \$96.00 per team (includes lunch)

## Friday, November 5

Bracketed Round Robin Teams	Round 1	9:30am
Open Stratified Pairs	Single Sessions	9:30am/2:00pm
199er Stratified Pairs	Single Sessions	9:30am/2:00pm
Bracketed Round Robin Teams	Round 2	2:00pm

## Saturday, November 6

Strati-flighted Pairs (AX play together; B/C play together)	2 sessions	9:30am/2:00pm
Open Stratified Side Pairs	Single Sessions	9:30am/2:00pm
199er Stratified Pairs	Single Sessions	9:30am/2:00pm



Due to Covid 19  
Please bring your  
own lunch on Friday  
And Saturday.

Directions to Duke City Bridge  
Club: From I-40 take Wyoming.  
Exit North to Northeastern  
(approximately one mile), turn  
right on Northeastern (traffic  
light). Club is building on right.

## Sunday, November 7

2 Session Stratiflighted Swiss Teams 10:00am &TBA  
Lunch included in entry fee.

Non-smoking tournament with  
breaks. Information and results  
at [www.abqbridge.com](http://www.abqbridge.com)

Stratified events: A: 3000+ B: 750-3000 C: 0-750  
Stratiflighted events: A: 4000+ AX: 0-4000; B: 750-3000; C: 0-750  
All events stratified by average masterpoint holdings