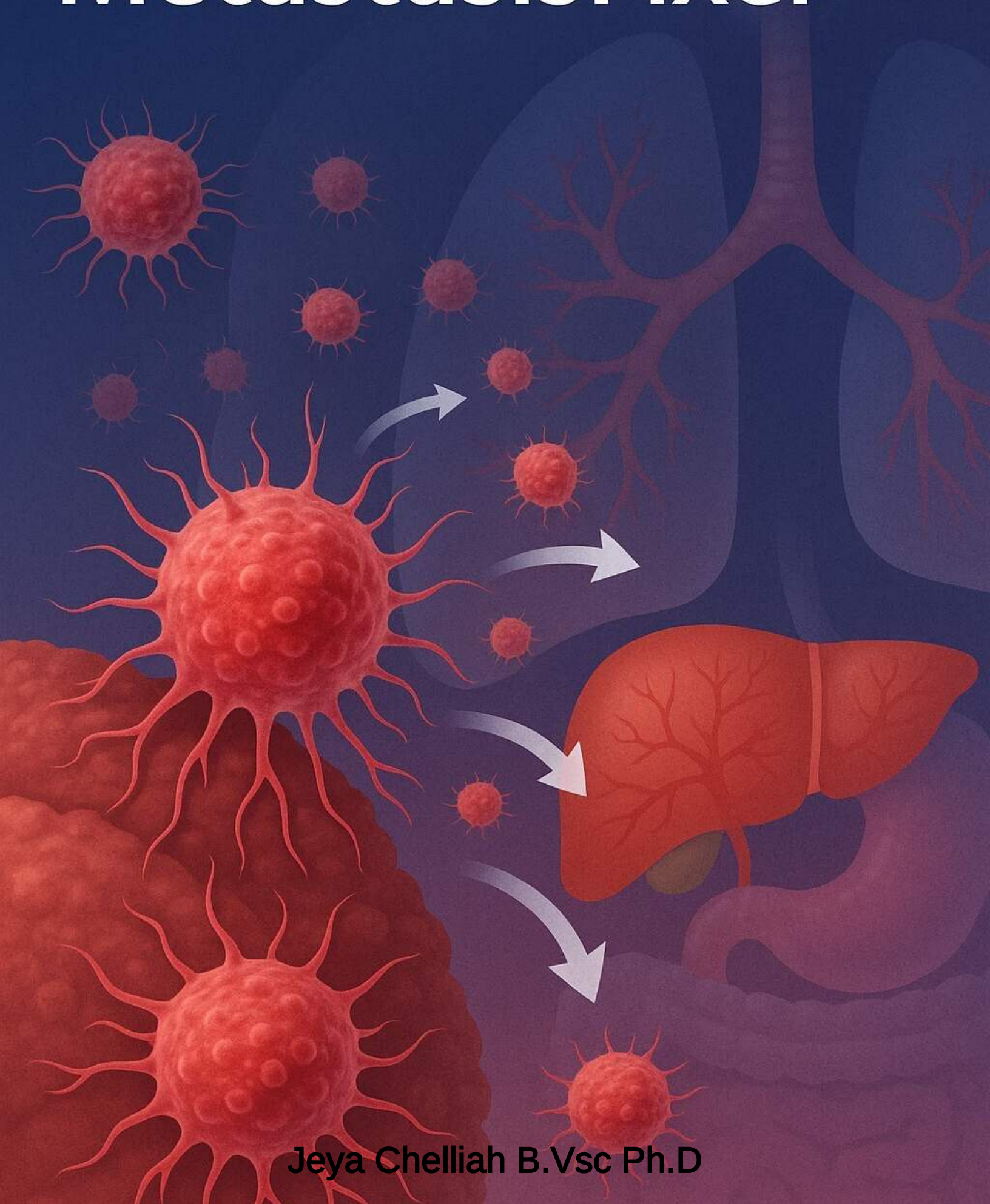


MetastasisFixer™



Jeya Chelliah B.Vsc Ph.D

AI-Powered Prompt Toolkit for Troubleshooting Tumor Invasion & Migration Assays

MetastasisFixer™ offers structured ChatGPT prompt templates that allow you to diagnose problems, optimize experimental design, and troubleshoot with confidence. Just insert your experimental details into the placeholders (e.g., [cell type], [compound], [observation]) and let AI guide you through potential fixes — instantly.



What's Inside:

This toolkit includes 7 interactive assay modules for metastasis and motility workflows, **with each module comprising two tailored prompts.**

- 1. Transwell Migration Assay Fixer
- 2. Transwell Invasion Assay (Matrigel-Coated) Optimizer
- 3. Scratch/Wound Healing Assay Troubleshooter
- 4. 3D Spheroid Migration Assay Template
- 5. Gelatin Zymography (MMP Activity Assay) Debugger
- 6. Cell Tracking & Live Imaging Prompt Builder
- 7. EMT Marker Expression Troubleshooting Prompts



Sample Prompt:

"I used a Matrigel-coated Transwell assay with [breast cancer cell line] and [10% FBS in lower chamber], but no cells invaded. I incubated for [24 hours]. What factors could be limiting invasion and how can I optimize them?"



Price: ***Introductory price: \$19 for a limited time!***