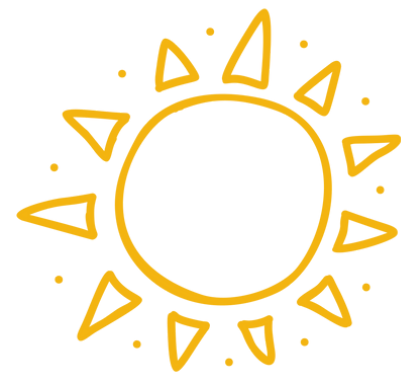




Celebrate Babies

2024 CORPORATE PARTNERSHIP

Bright beginnings build a brighter world.



Celebrate Babies Partnership

Our Most Precious Resource

Investing in babies is our greatest opportunity to create a brighter, healthier future for our entire community.

Investing in the well-being of babies and young children is an investment in our collective future. The first years of a child's life are critical for brain development, emotional growth, and the establishment of a foundation for lifelong health and success.

By ensuring that babies receive proper nutrition, medical care, and a nurturing environment, we set the stage for them to become healthy, educated, and productive members of society. Early interventions can prevent a host of problems later in life, reducing the need for more costly care.

Supporting the well-being of babies not only changes individual lives but also strengthens communities and economies, creating a brighter, more stable future for all. Investing in babies is not just a moral imperative, it is a smart, impactful choice with enduring benefits for generations to come.

**We need you in this vital mission.
Together, we can create a Florida where every child has the opportunity for a bright beginning and a brighter future.**



**Center for
Child Counseling**

October 22, 2024

Nadine Burke Harris, MD

Founder of the Understanding ACEs Movement!

A call to action to prevent and heal childhood adversity and trauma.



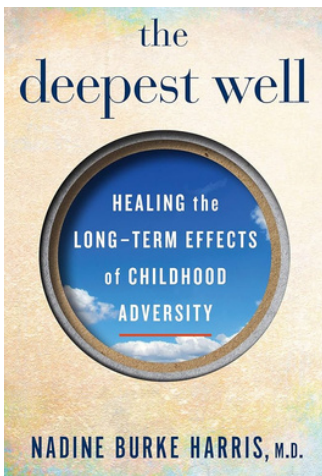
Dr. Burke Harris is the founder of the Center for Youth Wellness in San Francisco, an organization dedicated to improving the health of children exposed to ACEs. Dr. Burke Harris also served as California's first Surgeon General, focusing on addressing the root causes of health disparities and promoting early interventions for childhood trauma.

Her influential book, "The Deepest Well: Healing the Long-Term Effects of Childhood Adversity," has brought widespread attention to the impact of early adversity on long-term health and well-being.

Exclusive Discussion!

This exclusive, hybrid in-person (by invitation-only) and virtual event (open to all) will be hosted by Kathy Leone at The Breakers.

Live, In-Person and Virtual Event!



Dr. Nadine Burke Harris was already known as a crusading physician delivering targeted care to vulnerable children. But it was Diego — a boy who had stopped growing after a sexual assault — who galvanized her journey to uncover the connections between toxic stress and lifelong illnesses.

Dr. Burke Harris's research shows just how deeply our bodies can be imprinted by ACEs —adverse childhood experiences like abuse, neglect, parental addiction, mental illness, and divorce.

Childhood adversity changes our biological systems, and lasts a lifetime. For anyone who has faced a difficult childhood, or who cares about the millions of children who do, the fascinating scientific insight and innovative, acclaimed health interventions in *The Deepest Well* represent vitally important hope for preventing lifelong illness for those we love and for generations to come.

"It could be a dad hugging and listening. The buffer is hugely important, not just to attenuate the stress hormones but also to prevent the kind of epigenetic changes that lead to a dysregulated stress response and the major health issues that come with it."

Learn more here: www.centerforchilddcounseling.org/celebratebabies



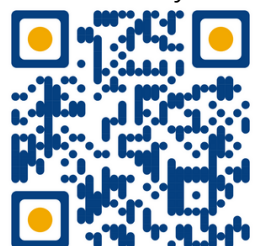
In partnership with



**FLORIDA ASSOCIATION
FOR INFANT MENTAL HEALTH**

THE BREAKERS
PALM BEACH

Invest Today



Celebrate Babies

Partnership Opportunities

Be a recognized partner at our EXCLUSIVE event with Dr. Nadine Burke Harris!

Newborn Baby - \$500

- Recognition on event program and website
- Thank you message on social media
- One event ticket

Smiling Baby - \$1,000

- All benefits of the Newborn Baby partnership
- Logo displayed on event signage
- Two event tickets
- Small promotional item included in event gift bags

Crawling Baby - \$2,500

- All benefits of the Smiling Baby partnership
- Logo on event banners and promotional materials
- Recognition in event press releases
- Four event tickets

Talking Baby - \$5,000

- All benefits of the Crawling Baby partnership
- Verbal recognition during the event
- Medium-sized promotional item included in event gift bags
- Six event tickets

Walking Baby - \$7,500

- All benefits of the Talking Baby partnership
- Sponsor spotlight on event website and newsletter
- Eight event tickets

Growing and Learning Baby - \$10,000

- All benefits of the Walking Baby partnership
- Prominent logo placement on all event materials and advertisements
- Large promotional item included in event gift bags
- Ten event tickets
- Opportunity to present a 2-minute speech at the event
- Exclusive sponsor recognition in a post-event thank you video



Corporate Partnership Commitment Form

Sponsorship Level _____ **Amount \$** _____

Contact Person _____

Title _____

Company _____

Address _____

City _____ **State** _____ **Zip** _____

Phone () _____ **Email** _____

We authorize Center for Child Counseling, Inc. to include our corporate name and/or logo on all items consistent with our partnership selection, as provided by our corporation.

Authorized Signature _____ **Date** _____

Pay online at: www.centerforchildcounseling.org/celebratebabies.
Make checks payable to Center for Child Counseling.

Name on Credit Card _____

Credit Card Number _____

Expiration _____ **CVV** _____

Billing Address, if different than above:

Address _____

City _____ **State** _____ **Zip** _____

I authorize Center for Child Counseling to charge my credit card \$ _____

Signature: _____

Thank you for your support!

PLEASE SEND THIS FORM TO: Center for Child Counseling, Inc.

ATTN: Renée Layman

8895 N. Military Trail, Suite 300C

Palm Beach Gardens, FL 33410

Email: renee@centerforchildcounseling.org **Telephone:** 561-530-4545

www.centerforchildcounseling.org

Contact Information



www.centerforchildcounseling.org

8895 N. Military Trail, Suite 300C
Palm Beach Gardens, FL 33410

Phone: (561) 244-9499 or
Email: info@centerforchildcounseling.org

Give to any campaign using the online Sponsorship Payment form:
www.centerforchildcounseling.org/corporate-giving

Please leave a note in the comments box about your sponsorship.



Let's Collaborate.

If you'd like to explore more ways your business can be a stand-out partner with Center for Child Counseling, please contact our CEO, Renée Layman at 561-530-4545 or Renee@CenterforChildCounseling.org.