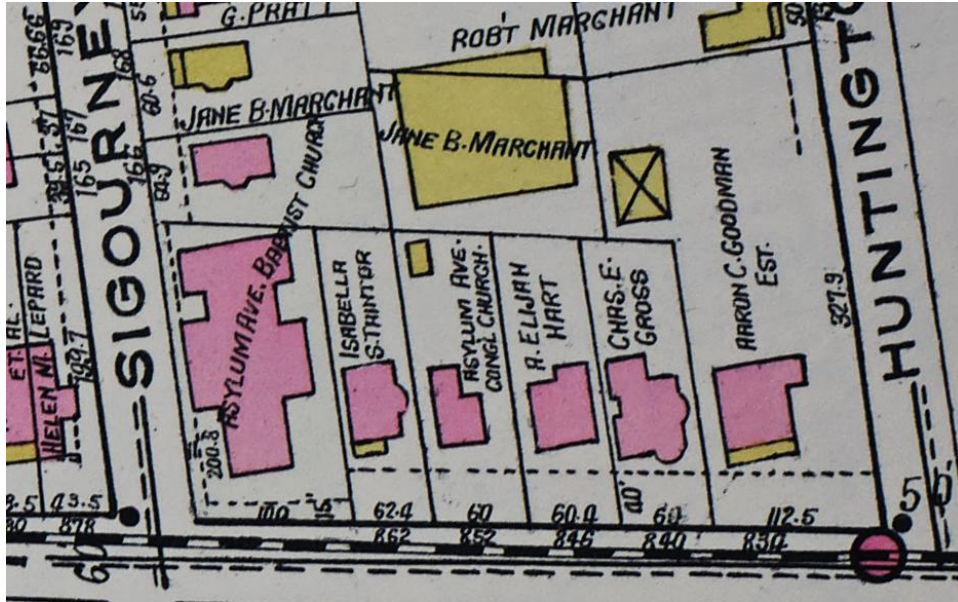


## AH Then & Now – Asylum, Huntington to Sigourney



The Library of Congress has in its collection of maps the 1920 edition of the Sanborn Company Fire Insurance Map of Hartford from which we can see in the section above, the north side of Asylum Avenue from Huntington to Sigourney Street. Of the five homes that are shown, three remain today, even though by 1920 there were more than 40 such brick single family homes on Asylum Ave from Farmington to Woodland Street, and another 25 brick two family homes similar to the one across the street at 839-41 which is now the offices of Catholic Charities. There were more than 85 residential buildings that existed on Asylum Avenue 100 years ago and the vast majority were brick and most were single-family owner occupied homes. Today only 9 remain and only one multi-family is owner occupied, in fact only four are residentially occupied at all.

Those below, the Clover Gardens Development, are slated to become restricted rental properties. More on this in an article in this edition.

