



ALTAMONT
PROPERTY GROUP

RESIDENTIAL | COMMERCIAL | LAND



46 Spring Cove *Asheville, NC*

5 Bedrooms // 4 ½ Bathrooms
4,300 Square Feet // 3.39 Acres
MLS 4000458

828-782-5582 • 86 ASHELAND AVENUE • ASHEVILLE, NC • 28801

WWW.ALTAMONTPROPERTYGROUP.COM



Welcome Home

Perfectly set on a choice 3.39 acre lot in Grove Park Cove, this newer build features exceptional craftsmanship and fine finishes throughout. With an open-concept floorplan, chef's kitchen, two primary suites, walkout basement and a heated garage, this home provides ample room for guests and outdoor living space. Your ideal Asheville lifestyle awaits with this in-town oasis.





Features

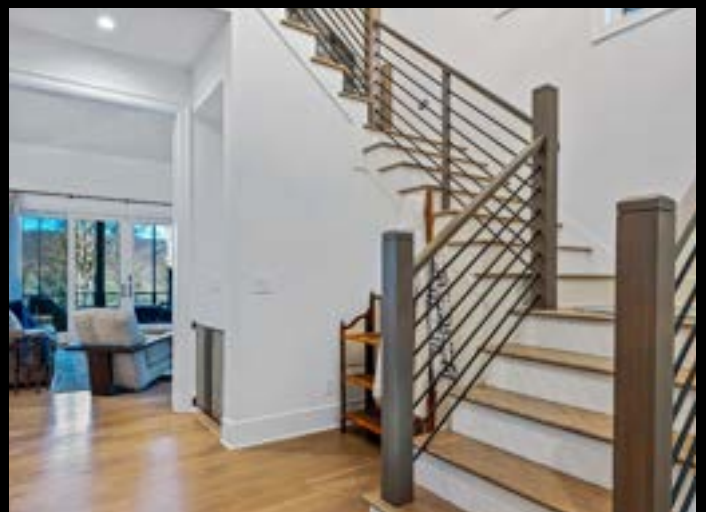
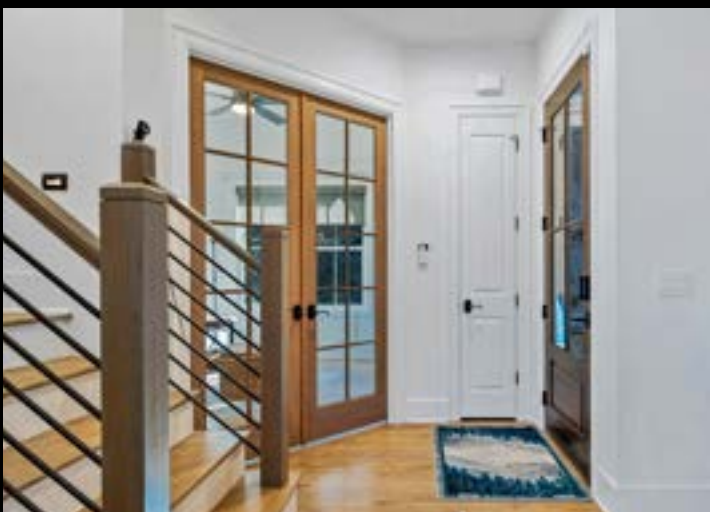
Built in 2021, this home has been meticulously maintained and lovingly cared for. Below are just a few of the many features that set this property apart:

EXTERIOR

- Oversized lot with nice setbacks offering long-term guaranteed privacy
- Exceptional views over the Beaverdam Valley
- Privately set at the dead-end of a driveway
- Rounded gutters around the home
- Lower level entertaining terrace with hot tub
- Sundance Spas 8 person jetted hot tub
- Outdoor fire pit
- Brick paver parking area
- Flagstone stairs and covered entry patio
- Tongue and groove wooden accent ceiling
- Brick paver walkway from driveway to front entry patio
- Cultured stone entry accent wall
- Spacious screened porch for outdoor living and entertaining
- TREX composite decking
- Glass-encased gas fireplace with cultured stone surround and wooden mantel
- Recessed lighting
- Unscreened and covered grilling area

GARAGE

- Heated/cooled garage with a Mitsubishi mini-split
- Oversized garage with tall ceilings
- Workshop space
- 120v Electric car charger
- Utility sink
- Wall-mounted tool organization
- Ample lighting and windows to invite daylight into the space
- LiftMaster designer insulated garage door
- Wooden baseboards in garage











Features (cont'd)

INTERIOR

- Abundant natural light with views overlooking the Beaverdam valley in the rear of the home
- SimpliSafe security system
- TRANE HVAC system with dual zones and humidifier/air purifier
- Gas furnace
- Gas powered generator
- Navien on-demand gas water heater
- Superior wall construction for the home foundation
- Wi-Fi controlled smart house, HVAC and security systems can be controlled via apps
- Termite/pest treatment plan in place with Clegg's Pest Control
- Attractive, neutral color palette was used throughout the home and exterior
- Recessed lighting throughout the home, most switches are on dimmers
- Flush HVAC register vents designed to blend with the hardwood flooring
- High-end, durable doors and windows
- Nearly all window treatments are electric (\$50k + in window treatment upgrades)
- Welcoming open-concept main living space, blending the kitchen, dining room, great room, foyer, and entry to other rooms in the home
- Keyless entry lock on front door and garage pedestrian door
- All interior doors are upgraded 1 ¾" solid core doors

KITCHEN

- Custom kitchen design by Keystone Kitchen and Bath
- Thermador appliance package
- 6 burner gas range with griddle, dual cabinet range
- Thermador range vent hood
- Pot filler above range
- Wi-Fi connected appliances (range and refrigerator)
- Quartz (Newport) countertops on the perimeter counters. Island countertop is a Caesarstone (Black Tempal) waterfall edge to the floor
- Pendant lights above kitchen island with Edison bulbs
- White Oak cabinetry with pull outs for organization and storage, soft close drawers, along with upper display cabinets that feature glass and interior lighting
- Wide plank oak flooring with warp-resistant backing
- Blanco SILGRANIT undermount sink
- Tongue and groove ceiling accents above the kitchen
- Wood wainscoting on the walls in the kitchen breakfast nook
- Bright and sunny space

PRIMARY SUITE

BEDROOM & CLOSET

- Custom cathedral ceiling buttressing
 - Sconce reading lights on each side of the bed
 - Custom closet organization
- Wide plank oak flooring with warp-resistant backing

BATHROOM

- Slate tile and glass river rock patterned flooring
- Glass-encased shower with rainfall showerhead and wand
- Spacious shower niche with glass river rock accents
- Infinity shower drain
- Oversized vanity mirror with undermount lighting
- Dual flush toilet
- Freestanding, jetted soaking tub
- Custom hanging light fixture above the vanity
- White Oak cabinetry with soft close drawers
- Bathroom design by Keystone Kitchen and Bath

GREAT ROOM / DINING AREA / ENTRY

- Vaulted ceilings create a grand announcement
- Glass-encased gas fireplace with floor-to-ceiling cultured stone surround and hearth
- Custom organization and storage niches
- Mounted Samsung TV
- Wide plank oak flooring with warp-resistant backing
- Coffered ceiling in dining room with high-end chandelier
- Tongue and groove wall accents in dining room
- Oversized ceiling fan selected to accent and fit the entry foyer space

OFFICE

- 5 windows allow for great connection to the outdoors and the private lot
- Samsung TV conveys
- Double crown mounting
- Custom wainscotting and trim

LAUNDRY

- Custom laundry room design by Keystone Kitchen and Bath
- White Oak cabinetry with custom organization, pull-outs, and soft close drawers
- Electrolux washer and dryer convey
- Entry mudroom bench, storage, and coat rack area for organization
- Wide plank oak flooring with warp-resistant backing
- slate tile flooring
- 1/2 bath of the laundry room is perfect for guest use on the main floor

UPSTAIRS

- 3 bedrooms in total, (1) second primary suite, and (2) (3) guest bedrooms that share a hall bathroom
- Quality ceiling fans in each bedroom
- Picture window overlooks the great room below
- Bathrooms designed by Keystone Kitchen and Bath
- All bathrooms are finished with tasteful and unique fixtures and tile work
- Dual flush toilets
- Custom closet organization in bedrooms
- Wide plank oak flooring with warp-resistant backing
- 3x Samsung TVs convey
- Custom step lighting on staircase

DOWNSTAIRS

- Walk-out lower level with abundant natural light
- 10' ceilings downstairs with crown moulding
- Open-concept second living room / recreation room
- Custom wet bar designed by Keystone Kitchen and Bath
- Quartzite (White Mustang) countertop on the wet bar
- White Oak cabinetry with custom organization, pull-outs, and soft close drawers
- Zephyr beverage refrigerator with display glass front
- Blanco SILGRANIT undermount sink
- Wide plank oak flooring with warp-resistant backing
- Shiplap wall accents in the living room
- Wooden display shelving with bankettes for storage in living room
- Gas fireplace with cultured stone surround
- 2 Samsung TVs convey
- One bedroom suite, with ensuite full bathroom
- Walk-in glass shower with river rock base and shower niche
- Marble tile flooring in bathroom
- Dual flush toilet
- Custom closet organization in bedroom
- High-end finishes consistent with the rest of the house
- Oversized ceiling fan matching the same style as the upstairs living and deck
- 3 spacious storage areas
- Walk out basement to lower level entertaining terrace
- Mudroom area with coat and towel rack entry from the outdoors and hot tub
- Custom step lighting on staircase

