



ALTAMONT
PROPERTY GROUP

RESIDENTIAL | COMMERCIAL | LAND



7 Oxford Court
Asheville, NC

7 Bedrooms // 6 ½ Bathrooms
5,652 Square Feet // 0.88 Acres
MLS 3867624

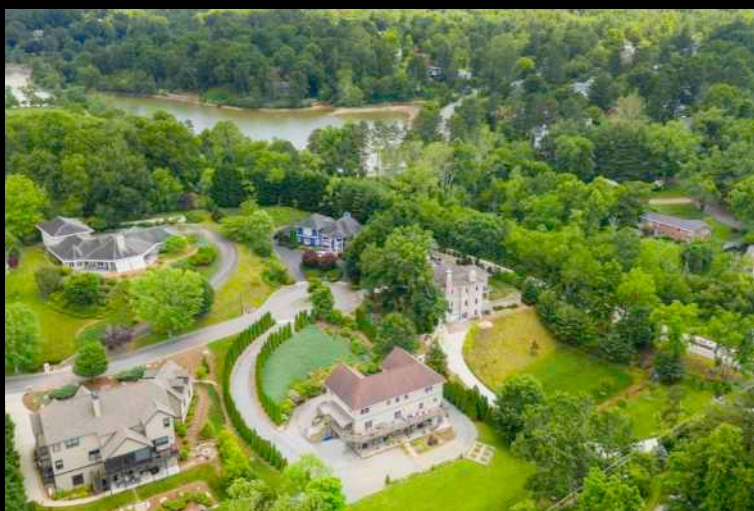
828-782-5582 • 86 ASHELAND AVENUE • ASHEVILLE, NC • 28801

WWW.ALTAMONTPROPERTYGROUP.COM



Welcome Home

Don't miss this rare opportunity for a luxury move-in ready home in Asheville's coveted Lakeview Park. Located just off Merrimon Avenue in North Asheville, enjoy quick access to Beaver Lake, Country Club of Asheville, Beaver Lake Bird Sanctuary, several grocery stores, and I-26. This home offers multiple open-concept living spaces, two full kitchens, and additional rooms that are ready for access conversion. Enjoy a private, park-like setting with a 360 degree driveway. Several outdoor living spaces connects you to nature from almost every room!





Features

Built in 2004, this home has been meticulously maintained and lovingly cared for. Below are just a few of the many features that set this property apart:

EXTERIOR

- Large, level lot with 360 degree driveway
- Idyllic setting and mature landscaping
- 2000sf of decks
- Double garage
- Privately situated off street

INTERIOR

- 3 Levels with 3 Primary Bedrooms
- Desirable open concept main living space
- 24' ceilings in main living space
- Custom milled cherry cabinetry and natural stone counters in kitchen
- Full kitchen and expansive living space in basement
- Two finished and heated rooms in attic, ready for access conversion
- Dedicated laundry
- Connection to the outdoors throughout





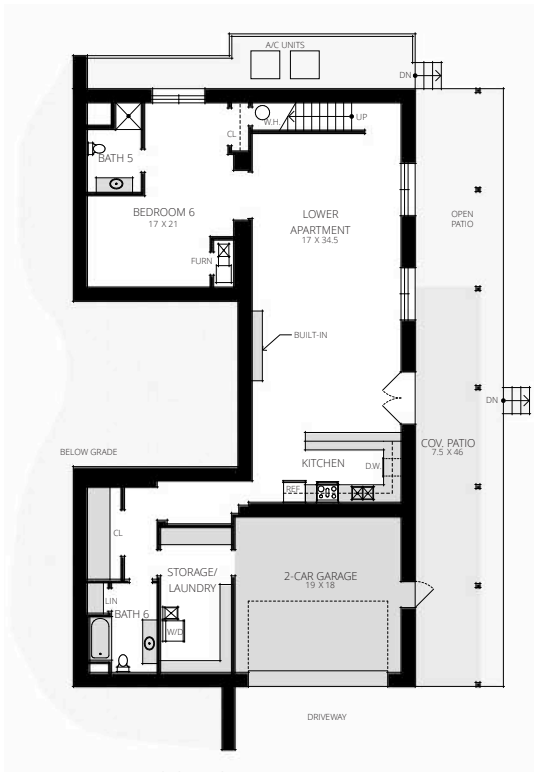








ALTAMONT
PROPERTY GROUP

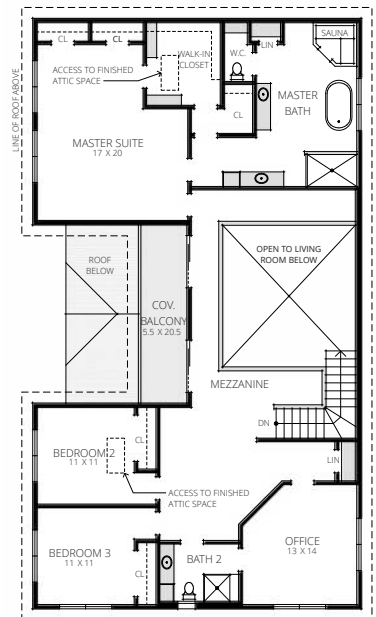


NOTES:
1. MEASUREMENTS WERE OBTAINED VIA THE NORTH CAROLINA REAL ESTATE COMMISSION GUIDELINES.
2. DIMENSIONS ARE ROUNDED TO THE NEAREST 1/2 FOOT AND ARE APPROXIMATE.
3. INFORMATION WITHIN THESE DRAWINGS ARE INTENDED SOLELY FOR THE USE OF REALTY MARKETING. NOT FOR CONSTRUCTION.
4. FOR MORE INFORMATION REGARDING MEASUREMENTS, MARKETING FLOOR PLANS, OR REMODEL DESIGN & CONSULTING, CONTACT WES HOGAN AT: FeaturedListingsWNC@gmail.com OR 828.577.8285



7 Oxford Ct. Asheville, NC

LOWER LEVEL LIVING SPACE	1,797 SQ. FT.
MAIN LEVEL LIVING SPACE	3,352 SQ. FT.
UPPER LEVEL LIVING SPACE	1,935 SQ. FT.
TOTAL HEATED LIVING SPACE:	7,084 SQ. FT.
GARAGE:	403 SQ. FT.
COVERED PORCHES/PATIOS:	962 SQ. FT.
BONUS ATTIC SPACE (NOT DRAWN):	462 SQ. FT.
OPEN DECK:	990 SQ. FT.



This listing is presented by:

REESE MORGANI

direct: 828-545-5880

email: morganilife@gmail.com

VIRTUAL TOUR:

<https://app.cloudpano.com/tours/dLKM9U1dE?mls=1>