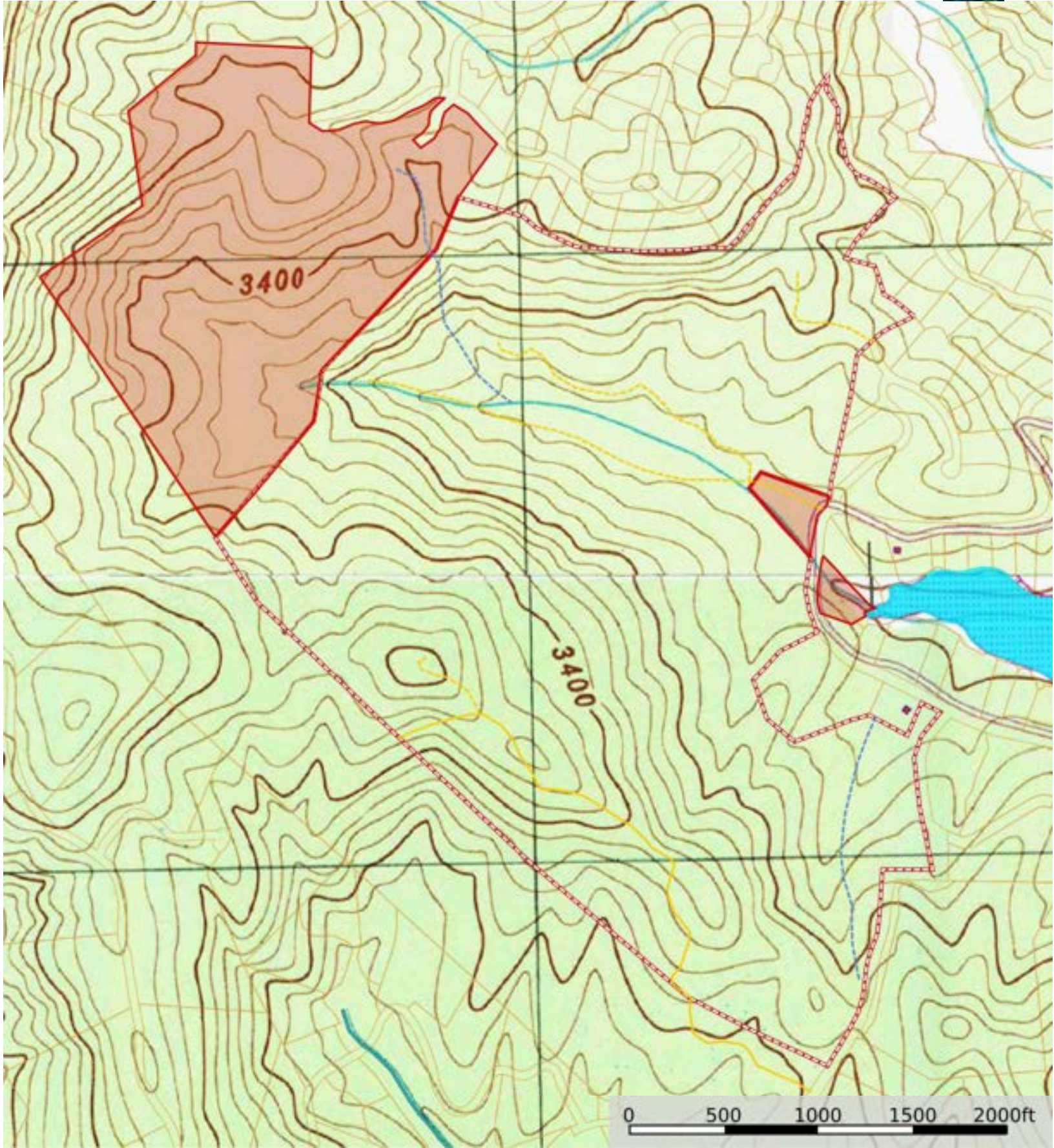




- Primary Road
- Stream
- Road / Trail
- Retained By Sellers (red)
- Boundary
- Stream, Intermittent
- River/Creek
- Water Body



- Primary Road
- Stream
- Road / Trail
- Retained By Sellers (red)
- Boundary
- Stream, Intermittent
- River/Creek
- Water Body

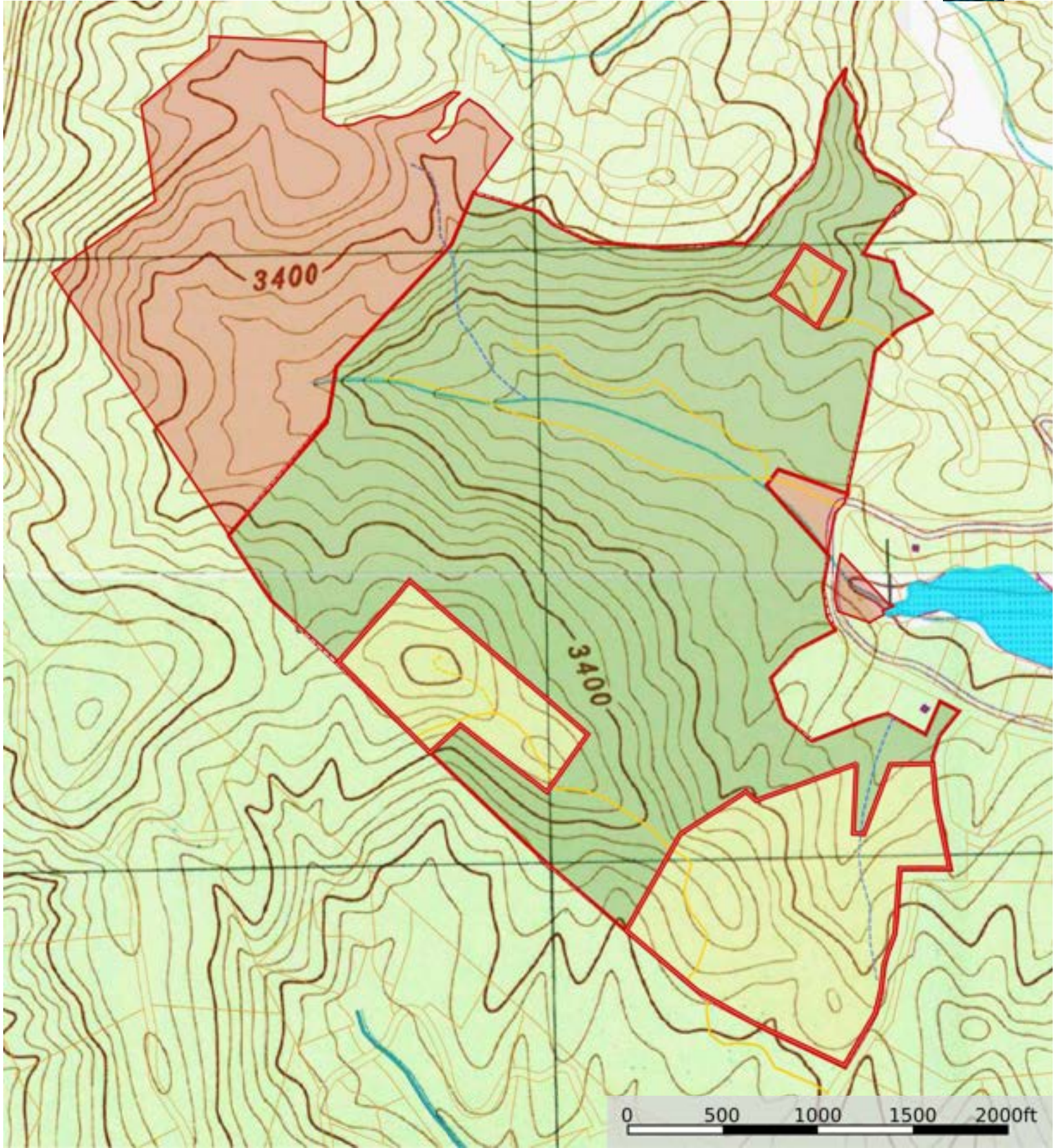




- Primary Road
- Stream
- Road / Trail
- CE Areas (green shaded)
- Retained By Sellers (red)
- Approved Build Sites (yellow)
- Boundary
- Stream, Intermittent
- River/Creek
- Water Body

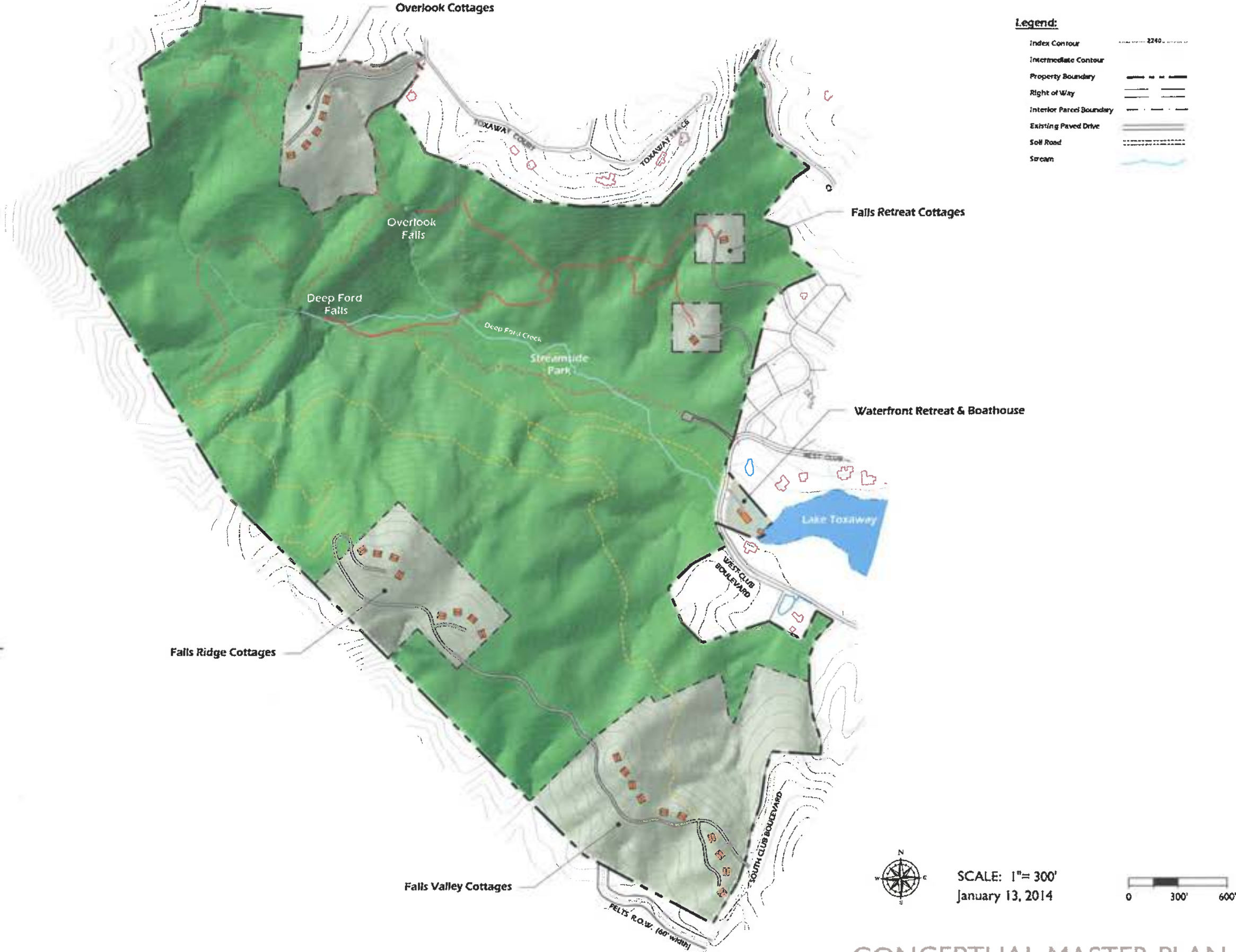


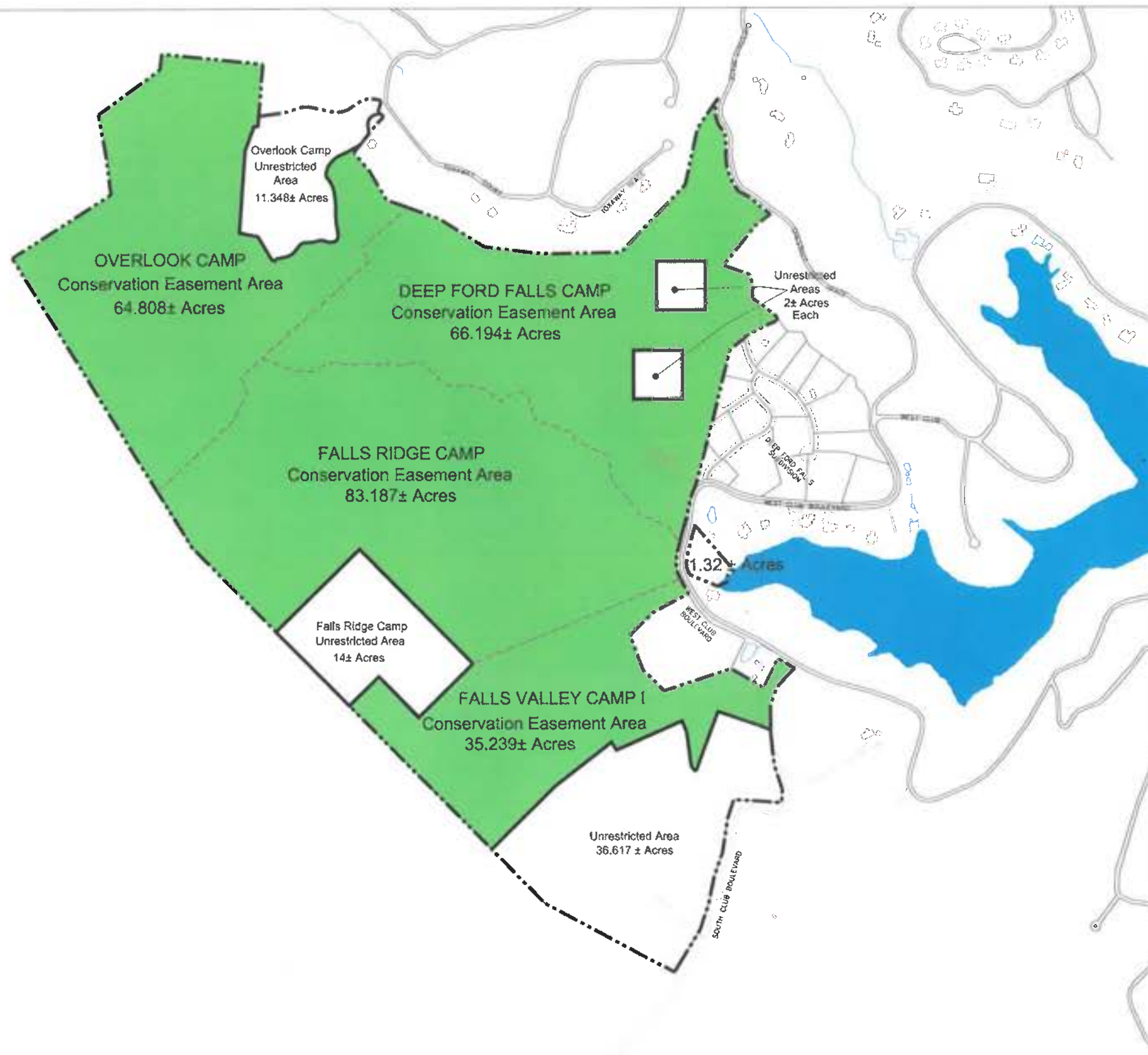
- Primary Road
- Stream
- Road / Trail
- CE Areas (green shaded)
- Retained By Sellers (red)
- Approved Build Sites (yellow)
- Boundary
- Stream, Intermittent
- River/Creek
- Water Body



- Primary Road
- Stream
- Road / Trail
- CE Areas (green shaded)
- Retained By Sellers (red)
- Approved Build Sites (yellow)
- Boundary
- Stream, Intermittent
- River/Creek
- Water Body

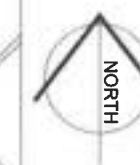
FELTS PROPERTY





LEGEND:

- Subject Property - 315.5 ± acres
- Interior Camp Boundaries
- Unrestricted Areas
- Subject to Conservation Easement ± 250 acres



DEEP FORD FALLS



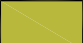





LAKE TOXAWAY
TRANSYLVANIA COUNTY, NORTH CAROLINA

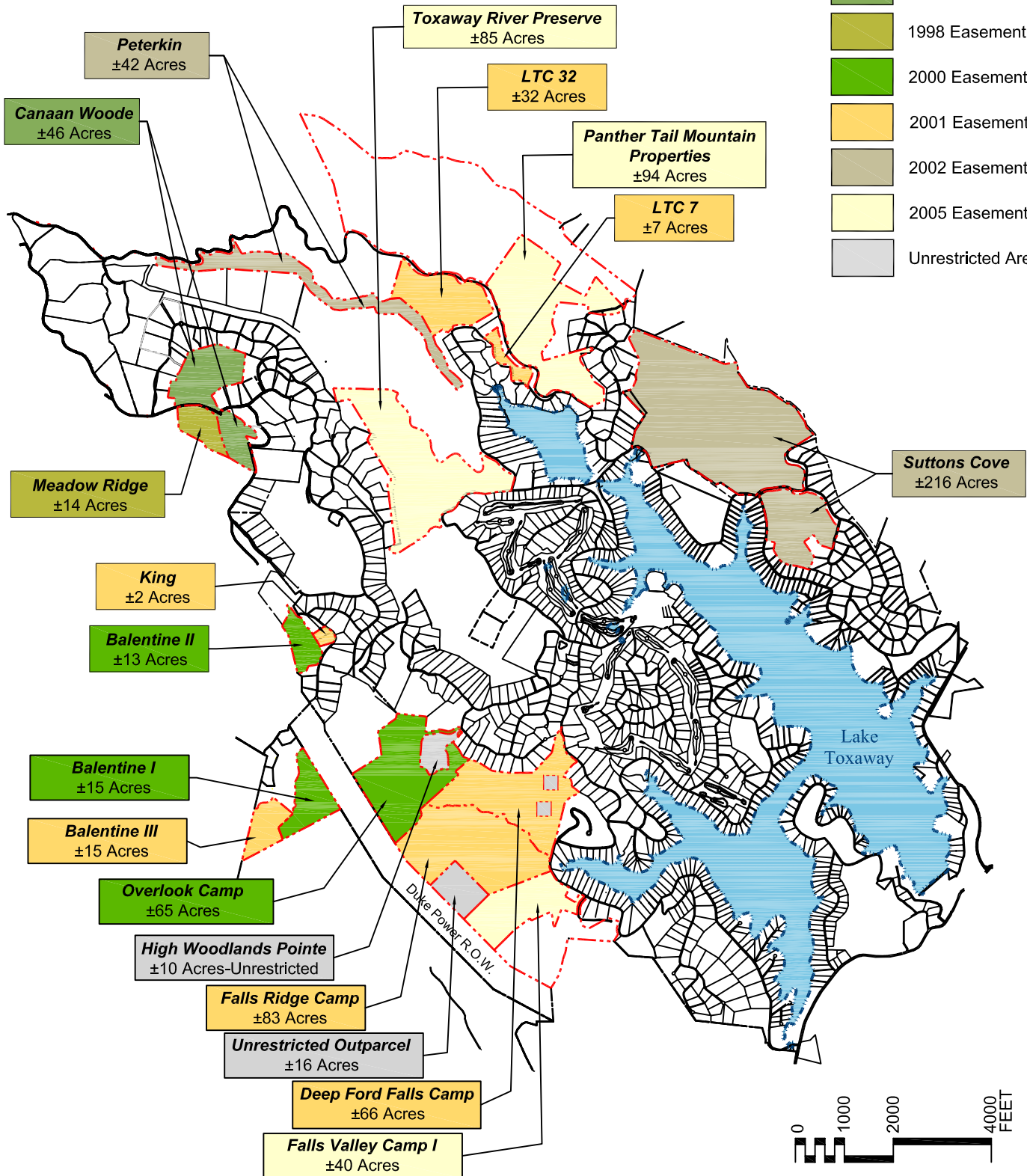
CONSERVATION EASEMENT PLAN

DATE: 06/01/2011



LEGEND

-  Property Boundaries
-  1997 Easement
-  1998 Easement
-  2000 Easement
-  2001 Easement
-  2002 Easement
-  2005 Easement
-  Unrestricted Areas



Lake Toxaway Region

Transylvania County
North Carolina

Lake Toxaway Context Map

Revisions:

