



OneRedmond

# Stronger Together

## Connecting Commerce to Community

### #OurRedmond



# OneRedmond



**Executive Director**  
Kristina Hudson  
*OneRedmond*



**President**  
Mary Morrow  
*Nelson Legacy Group*



**Vice President**  
Michael Mattmiller  
*Microsoft*



**Treasurer**  
Dr. Eric Scroggins  
*Banner Bank*

Ryan Baumgartner  
*Cashman Consulting*

Dr. Eric Murray  
*Cascadia College*

Brian Boland  
*Facebook*

Dr. Amy Morrison  
*Lake Washington  
Institute of Technology*

Kay Taylor  
*Evergreen Health*

Clarke Jewell  
*Olympia Precast*



**Secretary**  
Tom Markl  
*Nelson Legacy Group*



**Past President**  
Robert Pantley  
*Natural & Built Environment*



**Member-at-Large**  
Mayor Angela Birney  
*City of Redmond*



**Member-at-Large**  
Dan Angellar  
*Seattle Marriott Redmond*

# OneRedmond Foundation



**Executive Director**  
Kristina Hudson  
*OneRedmond*



**President**  
Bill Biggs



**Vice President**  
Aaron Knopf  
*Microsoft*



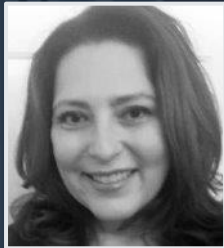
**Treasurer**  
Pat Vache  
*HRKinctions*



**Secretary**  
Menka Soni  
*Ravishing Women*



David Carson  
*Redmond City Council*



Jessica Kravitz  
*Vala Arts*



Nancy McCormick  
*Redmond City Council*  
1986-2009



Mary Morrow  
*Nelson Legacy*  
Group



Michael Mattmiller  
*Microsoft*



Latha Sambamurti  
*Washington State*  
Arts Commissioner

# The Big Picture

- **Return on Investment**  
\$5 for every \$1 of City funding through 70+ private sector investors
- **Increased flexibility and swift to act**
- **Unique Business Model**  
Chamber | Economic Development | 501c3



Plus over 50 more investors

**2,339** Businesses touched

**800+** New Jobs in Redmond

**49** Workshops & Webinars

**20+** Events



OneRedmond  
**2019 – 2020**  
**IMPACTS**

# Collaboration

- Downtown Parking Management Plan (*continued from 2019*)
- Environmental Sustainability Advisory Group (*new 2020*)
- Temporary Construction Dewatering Advisory Group (*new 2020*)
- Permitting and Entitlement Process Improvement Survey (*2019 - on temporary hold*)
- Small Business/Restaurant Recovery Planning
- School Impact Fee Analysis and Recommendations
- Affordable Workforce Housing Comprehensive Plan Amendment
- Well Head Protection
- Adoption of 2018 Building Code Advisory Group
- Civic Results Team

# Economic Development

- **Business Retention and Expansion**

100+ visits a year

New Business Walk Program

Small Business Development Center (SBDC)  
and SCORE

- **Business Recruitment**

62 prospects fielded

Innovation Triangle International  
Delegation Tours



# Economic Development

- **Informing and Bringing Community Together**

State of the City

Economic Outlook

Ribbon cutting

- **OneRedmond 501c3 Foundation**

Return of the Dragon

World's Largest Game of Simon



# Partnerships



# COVID-19 Outlook Survey

- Close to 1,000 small businesses surveyed in first two months of pandemic
- Vast majority experiencing negative to severe impacts
- Expect at least 50% loss of small business
- Unemployment claims surging
- Anticipated to get worse – not better
- Secondary effects of COVID-19:
  - ✓ Major tech companies and others have employees working remote
  - ✓ How do we drive more customers to our small businesses



# COVID-19 Response

## Race to Save Our Small Businesses

- Pivot and deliver resources real-time to those small businesses in need
- Provide the technical expertise to navigate the myriad of information, applications and everchanging rules
- Makes resources available to our diverse communities
- Recognized as a leader for our Relief and Recovery Efforts



Paycheck Protection Program

**Economic Injury  
Disaster Loan and  
Loan Advance**



**Employment Security Department**  
WASHINGTON STATE

**Expanded  
pandemic  
unemployment  
benefits guide**

Self-employed, independent  
contractors & others affected by  
COVID-19



# COVID-19

## Programs & Resources

- Eastside Recovery Hub
- Financial Resources Webinar Series
- 1,500+ Paycheck Protection Program (PPP) and Economic Injury Disaster Loan (EIDL) applications
- 60+ in depth business assistance
- 501c3 pivot for small business relief and recovery assistance
- 28,000 connections delivering resources and information





# COVID-19

Response, Resilience, Reopen, Recover

- King County Safe Start Personal Protection Equipment (PPE) Program
- No-cost Small Business Advising Services
- Resilient Recovery Webinar Series



# What They Are Saying

“This is AMAZING!!! We have slowly reopened our restaurant and this will be really crucial to helping us do just that, but in the safest manor possibly. Thank you X 1,000,000!!”

# What They Are Saying

“Thank you for hosting the OneRedmond webinar on Tuesday. I didn't expect to find out about the various resources available to small businesses, it was great!”

# What They Are Saying

“I didn't expect such a pool of resources available to help. I'm truly appreciative and grateful for everyone's time and responses. Thank you all for your kindness!”

# What They Are Saying

“Thank you very much for following up and finding an answer to my questions. I appreciate it!”

# What They Are Saying

“Thank you so much for taking care of small businesses like ours!”

# What Next?

- Focus on saving our local businesses
- Scale up small business support through grant funds and private sector contributions
- Continue the Business Walk Program
- Launch Fuel the Dragon Passport Game to drive customers to Redmond
- Partner and collaborate to address issues impacting our Eastside Communities
- Further refine and enhance our program offerings and communications -- #OurRedmondHeroes
- Review future recruitment opportunities





OneRedmond

# Questions





OneRedmond

Kristina Hudson

[kristinah@oneredmond.org](mailto:kristinah@oneredmond.org)

OneRedmond

[www.oneredmond.org](http://www.oneredmond.org)