

# Brush clearing and painting along Turtle Creek

- Cleared new brush growth in Maple Park and from the Ravine by Fairmount Avenue Bridge.
- Cleared brush along creek near Bowen Street Bridge and Cedar Springs Road Bridge.
- Cleared new brush growth in William B Dean Park, on hill at 3510, under and around Lemmon Avenue Bridge, and along park shoreline.
- Painted over graffiti under Avondale Bridge and on the wall in the Ravine, south of Park Bridge Court.

# Maple Park



# Maple Park



# The Ravine



# Cedar Springs Road Bridge area



# Near Bowen Street Bridge



# Near Bowen Street Bridge



# Hill by 3510 Turtle Creek Blvd



# Hill by 3510 Turtle Creek Blvd

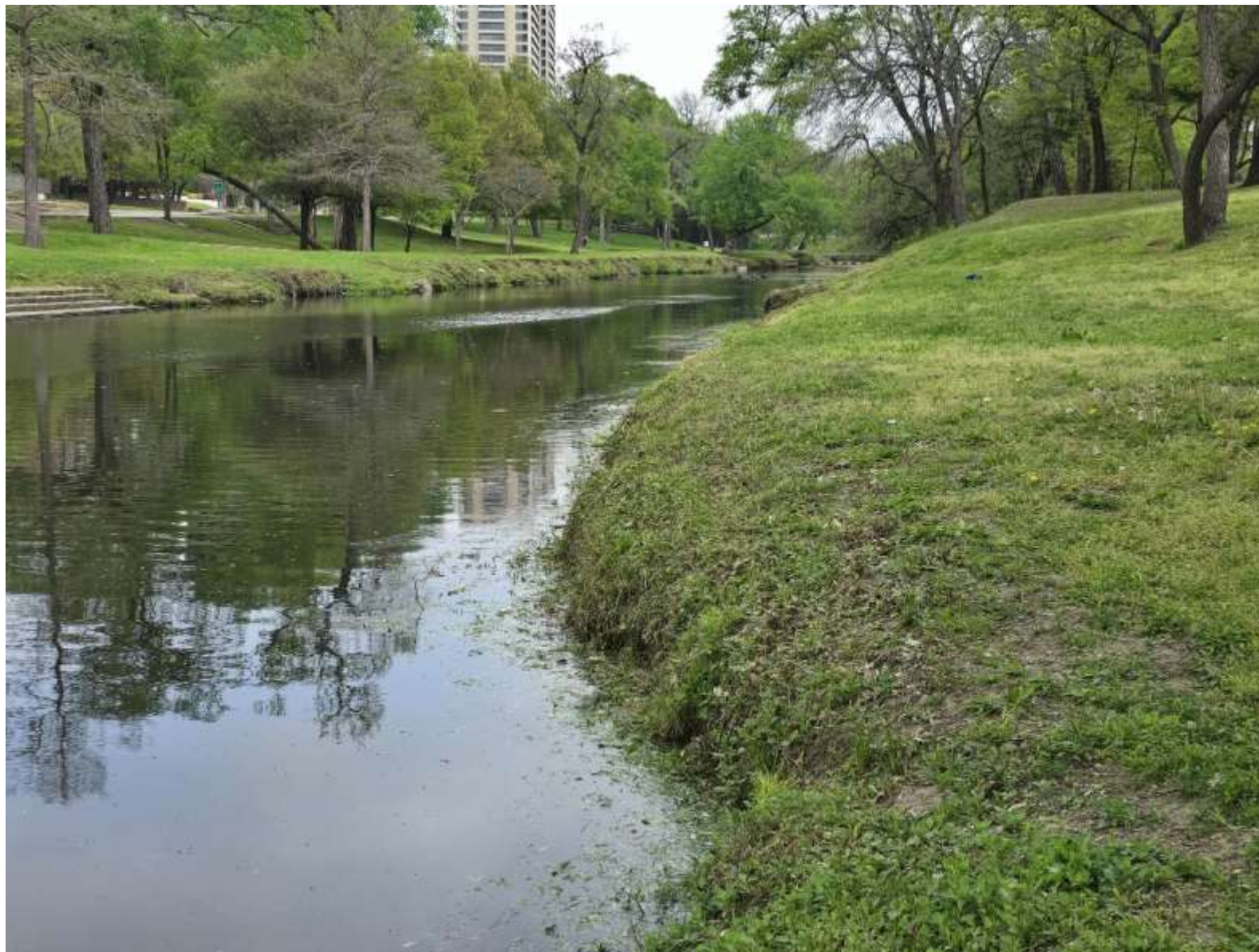




# Around Lemmon Ave Bridge area



# William B Dean Park







# Under Avondale Bridge





# The Ravine







# More of the Cedar Springs Bridge area needs attention



