

**August 13, 2025**

# North Carolina Person-Centered Practice Learning Collaborative Orientation with Tailored Plans

## What is this about?

From 2025-2026, national experts from [InLeadS](#) and [Flourishing Spark](#) will facilitate a **free four-session Person-Centered Practice Learning Collaborative** for service providers under the North Carolina Division of Mental Health, Developmental Disabilities and Substance Use Services (DMHDDSUS).

The Collaborative will strengthen service providers' skills in attaining and incorporating individualized goals documented in the [Person-Centered Plan](#) and promote better outcomes for individuals receiving services, with particular focus on individuals with Serious Mental Illness (SMI)/Seriously Emotionally Disturbed (SED).

## Collaborative orientation

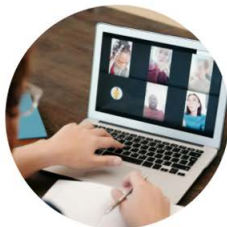
The Collaborative facilitators invite representatives from the Tailored Plans (Alliance Health, Partners Health Management, Trillium Health Resources, and Vaya Health) to attend an introductory 60-minute orientation to learn more about the Learning Collaborative and help shape the structure.

The orientation will take place on **August 13, 2025, from 11 am-12 pm Eastern time.**

Please register to attend at the following link:

<https://us06web.zoom.us/join/register/OJB7A5zxSPuUXJ7sFIEZnW>

Once you have registered, please scroll down in the confirmation email from Zoom and click "Add to Calendar."



## What will we talk about?

- The purpose and structure of the Collaborative
- Benefits of participation for Tailored Plans and service providers
- Service provider recruitment
- How Tailored Plans can support the outcomes of the Collaborative.



**Questions can be sent to [srajcevic@hsri.org](mailto:srajcevic@hsri.org)**



NC DEPARTMENT OF  
**HEALTH AND  
HUMAN SERVICES**  
Division of Mental Health,  
Developmental Disabilities and  
Substance Use Services

