

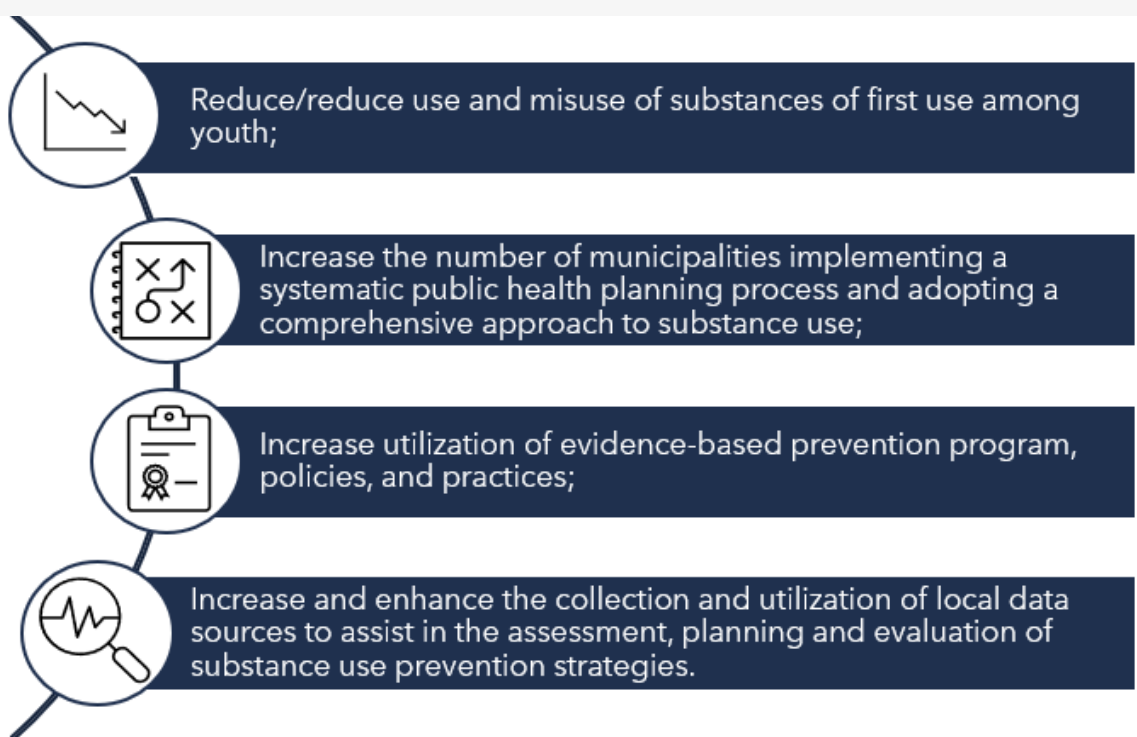
YOUTH SUBSTANCE USE PREVENTION

COMMUNITY ASSESSMENT AND INTERVENING VARIABLES

SUBSTANCE USE PREVENTION GRANT PROGRAM

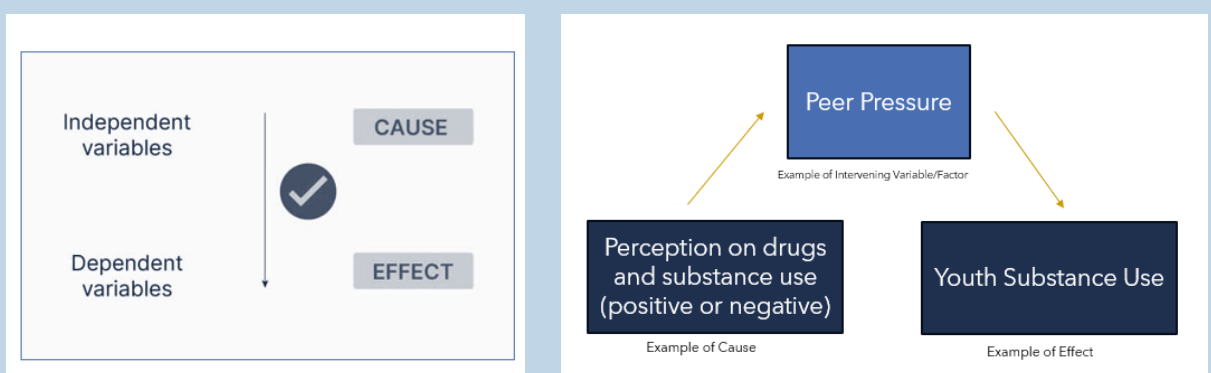
- MASSACHUSETTS COLLABORATIVE FOR ACTION, LEADERSHIP, AND LEARNING 3 (MASSCALL3)
- BOSTON PUBLIC HEALTH COMMISSION, OFFICE OF RECOVERY SERVICES
 - IN COLLABORATION WITH AMAKA CONSULTING & EVALUATION SERVICES

GOALS OF THE MASSCALL3B GRANT



WHAT ARE INTERVENING VARIABLES?

An intervening variable is **a factor that affects the relationship between two other factors**



INTERVENING VARIABLES IN YOUTH SUBSTANCE USE

We investigated possible factors that may be influencing the substance misuse patterns among youth in the City of Boston

METHODS

- Focus Groups
- Key Informant Interviews
- Surveys
- YRBS Data
- Census Data

ISSUES

- Economic Inequity
- Mental Health
- Family Trauma
- Access to Resources
- Built Environment
- Placed Based Inequity

We need to **consider the degree to which prevention programs and practices fit with local needs, capacity, and culture:** the better the fit, the more likely interventions are to be both successful and sustainable.

YOUTH SUBSTANCE USE PREVENTION

WHAT DID WE LEARN? WHERE DO WE GO FROM HERE?

WHAT WE LEARNED

Structural Contexts



Cost of Living

Income needed to sustain basic living conditions (e.g., food, housing, etc.)



Youth Employment

Availability and utilization of employment opportunities for youth.



Community Violence*

Experience or witnessing of violence in one's community, and possible related trauma.



Healthcare

Access/barriers to care (e.g., insurance, appointment times, language barriers).



Area/Neighborhood Variances

Changes and differences of behavior patterns by area code or neighborhood.



Time Influences/Circumstances

Related to changes and differences of behavior patterns over certain periods of time. (e.g., COVID19 Pandemic)

Youth Mental Health

Perceptions of youth mental health, and descriptions of current patterns of youth mental health.



Substance Use in the Home/Family

Whether youth have knowledge of or witness substance use in their home, or among family members.



Behavioral Patterns/Trends Among Youth

The patterns of substance use/misuse among youth.



Accessibility of Youth Activities*

The availability of services or resources to support youth well-being.



Intersectional Significance

The patterns of substance use/misuse, and other related factors based on different social identities youth have (gender, LGBTQIA+, race/ethnicity)



Youth Perceptions of Substance Misuse

The understanding and ideas that youth have on the impact/effect of substances.



Youth Specific Contexts

*More common in the South Cluster

COMMUNITY INPUT STRATEGY

WE WANT
TO HEAR
FROM
YOU

- We are asking our partners and community members to **complete a brief survey**.
- Rank the top four intervening variables that **you feel** should be a **priority** as well as **feasible** for BPHC to address in the upcoming Strategic Plan.
- Responses are **cluster specific**.
- Open through December 22, 2023
- Available in English & Spanish with additional languages pending.

Community Input Survey: Factors Effecting Youth Substance Use in Boston



SCAN HERE

NEXT STEPS

Create tailored approaches, opportunities, and solutions based off the needs of each cluster while simultaneously continuing to build the capacity of our YAB & YPAB in order for them to be active participants in all steps of the process.



USE THE RESULTS FROM THE INTERVENING VARIABLE SURVEY TO IDENTIFY THE FACTORS THAT MATTER MOST TO EACH CLUSTER.



CREATE A LOGIC MODEL ON HOW TO BEST ADDRESS THESE VARIABLES/FACTORS IN THE COMMUNITY.



IMPLEMENT THE PLAN.



EVALUATE AND MODIFY, AS NECESSARY.



Building a Healthy Boston