



Call Before Showing (CBS) eKEY App Instructions

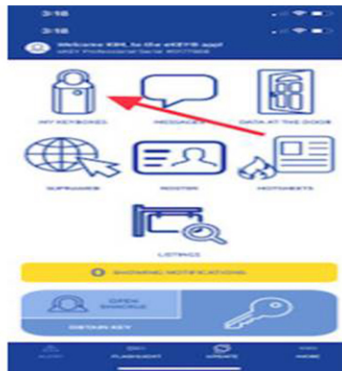
To enable the Call Before Showing (CBS) code function on your Supra lockbox, below are the instructions. The CBS code allows the listing agent to control KeyBox access by requiring the showing agent to call for authorization before opening the KeyBox. If the CBS code is active in a KeyBox, you must enter the CBS code into your key before accessing the KeyBox.

Enable or Disable Require CBS Code

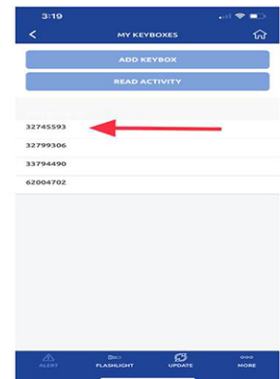
1. Turn on keybox



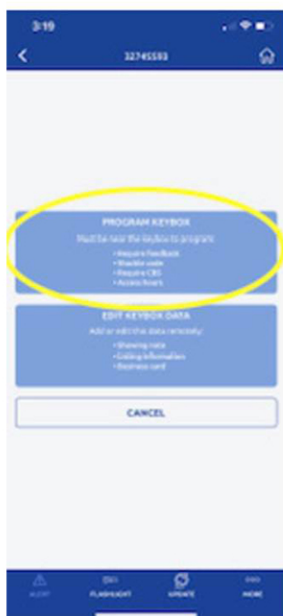
2. Open the Supra eKEY app and select My Keyboxes



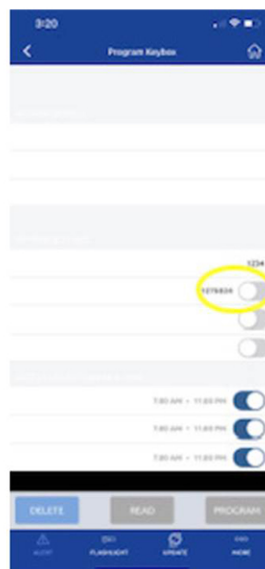
3. Select a keybox



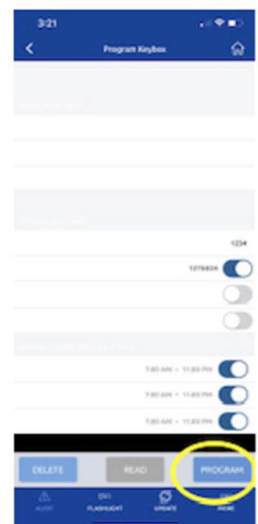
4. Select Program Keybox



5. Select Require CBS to enable or disable



6. Select Program



7. Enter shackle code