



# Kingman Co. 4-H Day

2025

Kingman County 4-H

## What is 4-H Day?

*Saturday, March 1, Kingman Elementary School, starting at 8:30 a.m.*

County 4-H Day is a day which 4-H'ers can participate in activities either as groups or as an individual. Activities can range from demonstrations, project talks, dance, music and dramatics. It is competitive with judges giving ratings in Blue, Red and White placings. 4-H'ers develop self-confidence and poise. It's an opportunity to perform in front of others and share one's 4-H experience.

The purpose of the 4-H Program is to help each boy and girl reach his or her maximum growth and development and it's in the area of Public Presentation that helps 4-H'ers reach their highest potential.

## Registering for 4-H Day

- You will be emailed a link with a different Sign Up Genius for the different divisions of County 4-H Day. Select which events you would like to take part in and sign up for a time slot.

*Sign up deadline is 5 p.m. on February 14, 2025!*

## What happens when I arrive at Club Day?

*4-H Day* takes place at Kingman Elementary School with the check-in and "headquarters" for the event in the cafeteria area of the building. So, you will want to enter the building on the south-west corner where the gym and the cafeteria meet (by the big parking lot). We will have signs on the door.

Please plan on being there 15-20 minutes ahead of time. If there is no waiting, there is always a good chance that you can perform early! When you arrive, you will be asked to go to the check-in table. You will be asked if you would like to perform your entry at the Regional Club Day event if you qualify. Each event has a certain number of Regional Qualifiers that can be chosen by the judge (see chart inside this newsletter). This will help office staff send in the Regional Entries to the host county in case you are unable to stay until the completion of Club Day. We will know right away if you are going to go on to Regional Club Day or not. Regional Club Day is a multi-county event, giving 4-H'ers an opportunity to watch and perform in the same venue as those from the surrounding area.

You will see a sign that indicates what room each event is held in. They are all either be in the upper floor of the elementary school in the two northern hallways, or in the gymnasium. Each room will have 4-H member volunteers as judge helpers and room monitors. They are also there to help you, so don't be afraid to ask for assistance in getting the hallway quieted or making sure you have the right form to present the judge.

*Contact the Extension Office if you have ANY questions about Club Day and what you can expect!*



# Events 4-H'ers can participate in at 4-H Day

## Show & Tell

Show and tell is for any **Cloverbud** member! The youth are eligible to bring something from his or her project and talk about it from 1-3 minutes. Cloverbuds will be seen by a judge and will turn in and receive back a score sheet with encouragement and tips. Cloverbuds also receive a participation ribbon. This event, and all Cloverbud entries, will not be eligible for Regional Club Day.

## Project Talks

Quite simple, it is a talk about one of your projects. **This event is specifically for youth age 7-13 years old.** It can tell about your experiences in the project and/or given information relating to your project. The talk should be over something you are familiar with and be of interest to yourself and others. Project talks tell ABOUT something. Visuals may be used but they are not required. Project talks should last between 3-7 minutes.

## Demonstrations

A Demonstration is showing and telling HOW to do something. It is a teaching method. Most demonstrations incorporate an introduction, a body, which is the "show and tell and doing" part and summary to stress the important parts of the demonstration.

A Demonstration:

SHOWS HOW—as you show how, you tell how.

TEACHES - how to make a finished product (there should be a finished product to share).

HAS VISUALS - charts and aids should be used for showing or listing how to make the finished product. Digital media with computers can also be used. Please be sure to tell us what equipment you need. Senior level 4-H'ers (age 14-18) have 5-15 minutes to use for their demonstration. Junior level 4-H'ers (7-13) have 3-10 minutes for their entry.

## Illustrated Talks

An illustrated talk is talking and telling how to do something by using pictures, charts, models, equipment and other types of visual aids. The key to an illustrated talk is "here's information I've shared that you can use to do something."

An Illustrated Talk:

TELLS HOW - You teach the audience how to do something, but there is not an end product.

HAS VISUALS - charts and aids should be used for showing or listing how to make the finished product. However, you will NOT have an end product to share. Digital media with computers can also be used. Please be sure to tell us what equipment you need.

## Public Speaking

Public speaking requires that the speaker write and deliver his/her own speech. The speaker will persuade, inform or educate the audience on a single issue or topic. The topic is only limited by the age appropriateness of the topic for the member and good taste. Advocacy of political or religious views is not appropriate. The purpose of this category is to encourage participants to give a speech in which they seek out accurate information, organize it into a useful form and competently present the information. No props or costumes allowed. Visual aids can be used by the speaker to assist with the delivery. Notes

may be used to assist the speaker, but they should be inconspicuous and not detract from the speech. **This year Public Speaking entries are for Juniors (7-13) and Seniors (14 and up).**

## Talent & Music

The 4-H Club Day Music/Talent includes the following categories:

- ⇒ Piano Solos, Instrumental Solos & Ensembles
- ⇒ Band
- ⇒ Vocal Solo, Vocal Ensemble & Club Chorus
- ⇒ Skits and Plays
- ⇒ Readings
- ⇒ Dance

## Other Talent

For music selections, keep the following pointers in mind:

- Memorization is encouraged but not required.
- Participants should provide an original copy of the music for the judges. HOWEVER, you may use a photocopy, but you will need to destroy the copy after your performance.
- Be sure to number the measures in the judge's copy of the music. Start with the number "1" in the first full measures of the song. Marking the measures helps the judge provide feedback to you. For example, the judge might say, "Good crescendo in M. 17" or "check the timing of M. 101."
- Announce the name, selection and composer. One way could be to say, "I am Chris Clover and I shall sing (play) 'Fluttering Butterflies' by Smith." After you sit down, adjust the piano bench as needed. When you are finished, pause and acknowledge your audience's applause.
- If you forget or lose your place in the music, keep your composure. Try jumping forward to a place that you know well. If that doesn't work, simply ask the judge if you could have your music back (assuming your piece is memorized). This happens to all musicians. Don't let it sidetrack your performance.
- Accompanists for vocal or instrumental solos do not have to be 4-H members. Tape or CD accompaniment is fine, but you must bring your own player.
- Smile!

## Instrumental/Piano Solos

Plan on doing 1 number for your instrumental or piano solo. There is no minimum length for the piece.

## Vocal Chorus

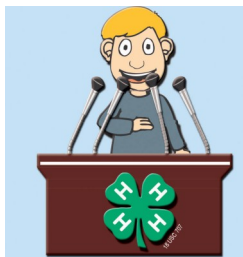
In this division, there should be 12 or more 4-H members and 2 selections should be performed.

## Vocal Ensemble & Instrumental Ensemble

Vocal Ensembles contain 2-11 members. The senior division should do 2 numbers while the juniors should perform 1 number.

## Vocal Solo & Instrumental Solo (including piano)

Perform 1 number and adhere to the tips above in regards to making sure the judge has a copy of your performance selection.



## ***MORE Events 4-H'ers can participate in at 4-H Day***

### **Band/Orchestra**

This is for 12 or more members. The group should perform 2 numbers.

### **Dance**

This may contain anywhere from 1 to 16 members. Keep the selection to a time frame of 3-5 minutes. Choose music appropriate to the style of dance you will be performing. You must provide your own music and equipment, an extension cord is handy, too. Rhythm and staying with beat of the music are important. Costumes or similar coordinated outfits add to the presentation. Make eye contact with the audience.

Acknowledge the audience applause.

### **One Act Play**

This may contain any number of 4-H'ers and can take up to 45 minutes.

### **Skit**

This may contain any number of 4-H'ers and take up to 10 minutes.



### **Creative Dramatics**

Any number of 4-H'ers and can take up to 10 minutes.

### **Other (novelty, stunt, puppets, etc.)**

Any number of 4-H'ers, can take up to 10 minutes.

### **Readings**

Readings may be dramatic, humorous, interpretive or other type. It may or may not be memorized and it is at your discretion as to if you would like to share a copy of your reading with the judge. When doing a reading, announce your name, the title of your reading and author. If doing a portion of a larger work, you may also want to provide the context for your reading so that the audience understands your presentation. After your introduction, you may also want to briefly turn your back to the audience and then turn around to start your reading. This helps the audience know when the introduction is over and your reading is beginning. Readings for senior 4-H'ers (14-18) can be 5-7 minutes; readings for junior 4-H'ers (7-13) can be 3-5 minutes.

## **Parliamentary Procedure**

### **Gavel Games**

This division is the only one with three age levels: Senior (14 & up), Intermediate (10-13), and Junior (7-9). Each team consists of 4 members plus 2 alternates for a total of 6 members. There is a time limit of 30 minutes for this.



## **Other Resources**

Our friends at Sedgwick County 4-H made an awesome group of videos to help 4-H'ers with their Club Day entries!

Log on to:

<http://www.youtube.com/sedgwickcounty4H>

These clips are amazing!

You can also view clips on their website at <https://www.sedgwick.k-state.edu/4-h-youth/news-and-activities/fourhday/4-h-day.html>

## ***REGIONAL CLUB DAY***

***Will be held on March 22th***

***At***

***Medicine Lodge High School!***



SECTION	EVENT	REGIONAL QUALIFICATIONS	PARTICIPANTS	TIME ALLOWED
<b>Public Presentations</b>	Show & Tell	(local ONLY)	1 only, Cloverbuds only	n/a
	Project Talks	2 per County	1 only, 7-13 yrs of age	3-7 minutes
	Demonstrations & Illustrated Talks Sr. Division Jr. Division	2 per County 2 per County	1 or 2, 14-18 yrs of age 1 or 2, 7-13 yrs of age	5-15 minutes 3-10 minutes
	Public Speaking Sr. Division Jr. Division	2 per County 2 per County	1 only, 14-18 yrs of age 1 only, 7-13 yrs of age	5-15 minutes 5-15 minutes
	Readings Sr. Division Jr. Division	2 per County 2 per County	1 only, 14-18 yrs of age 1 only, 7-13 yrs of age	5-7 minutes 3-5 minutes
<b>Parliamentary Procedure</b>	Model Meetings	1 per County	Any number of 4-H members plus 1 or 2 adult leaders	35 minutes max
	Gavel Games Sr. Division (14+) Int. Division(10-13) Jr. Division (7-9)	1 per County 1 per County 1 per County	Each team consists of 4- 5 members	30 minutes max
<b>Talent- Music</b>	Chorus	1 per County	12 or more 4-H members	2 numbers
	Vocal Ensemble Sr. Division Jr. Division	1 per County 1 per County	2-11 4-H members 2-11 4-H members	2 numbers 1 number
	Vocal Solo Sr. Division Jr. Division	1 per County 1 per County	1 only, 14-18 yrs of age 1 only, 7-13 yrs of age	1 number 1 number
	Band/Orchestra	1 per County	12 or more 4-H members	2 numbers
	Instrumental Ensemble Sr. Division Jr. Division	1 per County 1 per County	2-11 4-H members 2-11 4-H members	2 numbers 1 number
	Instrumental Solo (includes piano solos) Sr. Division Jr. Division	1 per County 1 per County	1 only, 14-18 yrs of age 1 only, 7-13 yrs of age	1 number 1 number
<b>Talent- Dance</b>	Dance- All Forms Sr. Division Jr. Division	1 per County 1 per County	Up to 16 4-H members Up to 16 4-H members	3-5 minutes 3-5 minutes
<b>Dramatics</b>	One Act Play	1 per County	Any # of members	45 minutes max
	Skit	1 per County	Any # of members	10 minutes max
	Creative Dramatics	1 per County	Any # of members	10 minutes max
	Other - Novelty, stunt, puppets, etc)	1 per County	Any # of 4-H members	10 minutes max

If you have questions regarding the information in this newsletter, please contact me at:  
Kingman County K-State Research and Extension Office  
Melissa Thimesch  
125 N Spruce  
Kingman, KS 67068  
620-532-5131  
[mthimesch@ksu.edu](mailto:mthimesch@ksu.edu)

K-State Research and Extension is committed to providing equal opportunity for participation in all programs, services, and activities. Program information may be available in languages other than English. Reasonable accommodations for persons with disabilities, including alternative means for communication (e.g., Braille, large print, audiotape, and American Sign Language) may be requested by contacting the event contact Melissa Thimesch two weeks prior to the start of the event at 620-532-5131 or [mthimesch@ksu.edu](mailto:mthimesch@ksu.edu). Requests received after this date will be honored when it is feasible to do so. Language access services, such as interpretation or translation of vital information will be provided free of charge to limited English-proficient individuals upon request.

**Kansas State University Agricultural Experiment Station and Cooperative Extension Service**  
K-State Research and Extension is an equal opportunity provider and employer.