

-- THE SEA ISLE CITY HISTORICAL MUSEUM --

An Invitation

Welcome. The Sea Isle museum is located within the public library building at 48th Street and Central Avenue. We hope that the following virtual tour will encourage you to come visit.



Parking is free, admission is free, and you can stay as long as you like. There are permanent and rotating exhibits, with a bounty of inventory in storage waiting its turn to be put on display – just like at the Smithsonian. The museum is handicap-accessible. It's designed with an open floor plan so you can move around without bumping into one another.

As you enter, the major display area is straight ahead. The content changes from time-to-time; today, the space is devoted to Sea Isle's military history.



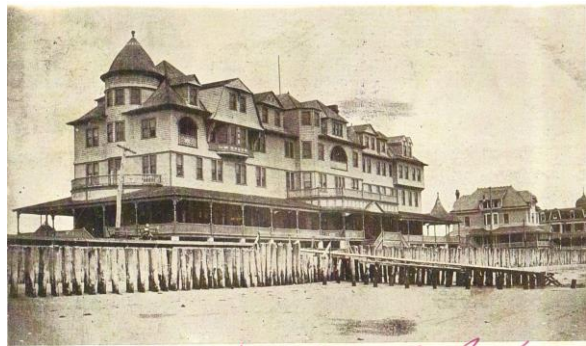


Research and Browsing

For the studious or the simply curious, there's an area to sit and conduct research, take notes, or browse through the many articles, books, and thousands of photographs dealing with Sea Isle and its 140-year history. A few samples:



*The Sea Isle City Railroad Station c1910
(on JFK Boulevard)*

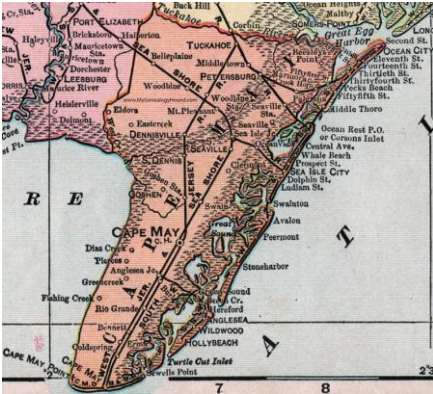


*The elegant Continental Hotel at 25th St
(it covered two acres)*

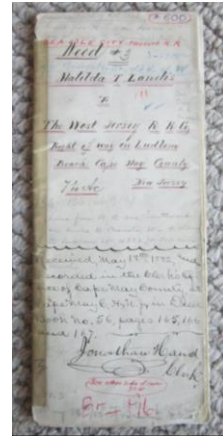
There are: bookcases filled with photo albums, display cases brimming with Mike Stafford's written material, vintage pamphlets, "*hodgepodge of delights*," and even books,



...and a ten-drawer map cabinet with deeds and maps dating back to Sea Isle's founding.



1906 map of Cape May County



1882 deed from Matilda Landis
granting the West Jersey Railroad
a right-of-way along the beach

Exhibits and Artifacts

There's more. We have:

- exhibits devoted to subjects such as the Brides of Sea Isle, Cronecker's Hotel and Restaurant, an early kitchen display, and the Sea Isle City beach patrol,

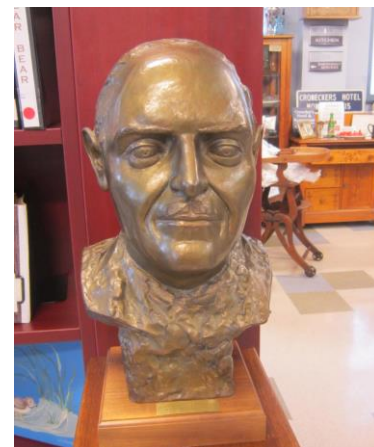


The Brides of Sea Isle



Cronecker's Restaurant display

- and stand-alone artifacts such as an old-time, working Victrola record player, a circa 1900 barber's chair – and a bronze bust of former mayor Vincent Lamanna (1961-1965), which you're welcome to pat on the head for good luck.



Family Albums

A unique feature of the museum is a wall of bookcases with more than 200 Sea Isle Family Albums, ranging from Abrams to Zizak. Created by the families themselves, they provide a special personal look into the town's history. The albums are a work in progress. If you're so inclined, you're invited to create one devoted to your own family.



For Younger Visitors

The museum conducts a Scavenger Hunt during the summer months with (very) small prizes for those who find all the objects on the list. It's always fun when a six-year-old asks questions like "What's a spinning wheel?" or "What's a hot water bottle?"

There's a hundred-year-old trolley bell to ring ("What's a trolley?") and a boat stoplight from the old 44th Street bridge to toggle. And you don't have to be an oldster to enjoy looking at, and learning about, the many vintage photographs on our shelves.

Another youngster-oriented activity is Touch 'N Try where kids, or anyone, can try on military and other uniforms – a photo opportunity waiting to happen.



The Memorial Garden

The Museum Memorial Garden on the grounds adjacent to the building is dedicated to Mike and Marie Stafford. The garden features a path of pavers inscribed with the names of past and present members of the Sea Isle community. (Commercial alert: new pavers are for sale.)

The following photo shows the grounds of the garden, including:

- a seven-foot statue of King Neptune, the only remaining public statue which Charles Landis brought from Italy when he founded Sea Isle in 1881,
- a running water feature leading from beneath King Neptune toward the bottom of the photograph,
- a flagpole which comprised part of the main mast of the George R. Skolfield, a schooner which ran aground at 29th Street in 1920.



Museum Events

Every year the museum sponsors a number of events for the community. (Most even come with refreshments.) For example:

- Presentations on subjects such as "The History of Sea Isle City" and "The Sea Isle City Lighthouse,"
- Special events such as Open Houses, Arbor Day, and an annual Art Show.



Museum volunteers at the December, 2018 Holiday Open House

The Gift Shop

Of course, no self-respecting museum allows its visitors to exit without passing through the gift shop. Ours is pretty benign, with books, clothing, and other miscellany, but nonetheless you have to go through it to leave. It all goes to a good cause – us.

To enjoy our collection of photos, literature, and artifacts, please visit the Sea Isle City Historical Museum at 48th Street and Central Avenue. Access our website at www.seaislemuseum.com. Call 609-263-2992. Current hours are 10:00am – 3:00pm Monday, 1:00pm – 3:00pm Tuesday and Wednesday, and 10:00am – Noon on Thursday.

***This “Spotlight on History” was written by
Sea Isle City Historical Society Volunteer Bob Thibault***

Photos were provided courtesy of the Sea Isle City Historical Museum

###