

# September 11, 2001

## Timeline



# September 11, 2001

## 7:59 a.m.



American Airlines Flight 11 (Boeing 767) takes off from Boston's Logan International Airport. It is on its way to Los Angeles with 92 people aboard.

# September 11, 2001

## 8:14 a.m.



United Airlines Flight 175 (another Boeing 767) takes off from Boston. It has 65 people on board and is also headed to Los Angeles.



# September 11, 2001

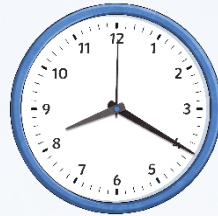
## 8:19 a.m.



On board Flight 11, flight attendants alert ground crew that the plane has been hijacked. The FBI are notified by American Airlines.

# September 11, 2001

## 8:20 a.m.



American Airlines Flight 77 (Boeing 757) takes off from Dulles International Airport outside of Washington D.C. It is headed to Los Angeles with 64 people on board.

# September 11, 2001

## 8:40 a.m.



The Northeast Air Defense Sector scrambles two fighter planes from Cape Cod's Otis Air National Guard Base to follow Flight 11. They are not yet in the air when Flight 11 crashes into the North Tower.

# September 11, 2001

## 8:41 a.m.



United Airlines Flight 93, a Boeing 757 on the way to San Francisco, takes off from Newark International Airport. It has 44 people aboard and was scheduled to depart at 8:00 a.m., which was around the time of the other hijacked flights, but it had been slightly delayed.



# September 11, 2001

## 8:46 a.m.



The hijackers on board American Airlines Flight 11 crash the plane into floors 93-99 of the North Tower of the World Trade Center Towers, killing everyone on board and hundreds inside the building.



# September 11, 2001

## 8:47 a.m.



Within seconds, NYPD and FDNY units are dispatched to the World Trade Center. The evacuation of the North Tower begins.

# September 11, 2001

## 9:02 a.m.



Port Authority officials broadcast orders to evacuate both towers via the public address system; an estimated 10,000 to 14,000 people are already in the process of evacuating.

# September 11, 2001

## 9:03 a.m.

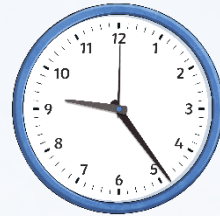


United Airlines Flight 175 is crashed into floors 75-85 of the World Trade Center's South Tower, killing everyone on board.



# September 11, 2001

## 9:24 a.m.



Some passengers and crew aboard Flight 77 are able to alert family members on the ground of the suspected hijacking. The Federal Aviation Administration notified the Northeast Air Defense Sector of the news.

# September 11, 2001

## 9:37 a.m.



Flight 77 is crashed into the western façade of the Pentagon in Washington, D.C.

59 people aboard the plane and 125 military and civilian personnel inside the building are killed.

# September 11, 2001

## 9:45 a.m.



The U.S. Capitol Building and the White House are evacuated due to rumors of other attacks.



# September 11, 2001

## 9:59 a.m.



The World Trade Center's South Tower falls down.

# September 11, 2001

## 10:07 a.m.



Passengers and crew members aboard Flight 93 attempt to retake control of the plane after hearing about the attacks. As a result, the hijackers crash the plane into a field in Somerset County, Pennsylvania. This kills all 40 passengers and crew on board.

# September 11, 2001

10:28 a.m.

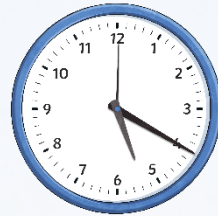


The North Tower of the World Trade Center collapses.



# September 11, 2001

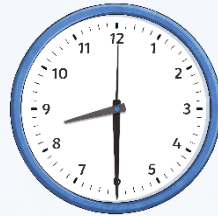
## 5:20 p.m.



After burning since the morning, the 47-story Seven World Trade Center collapses. The building was evacuated earlier so there were no casualties. However, rescue workers in the area have to flee.

# September 11, 2001

## 8:30 p.m.



President Bush addresses the nation. He describes the attacks as “evil, despicable acts of terror.” He states that America, its friends and allies would “stand together to win the war against terrorism.”



twinkl