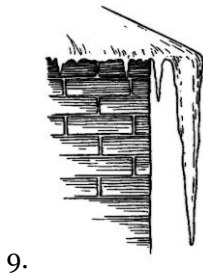
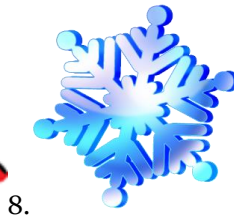
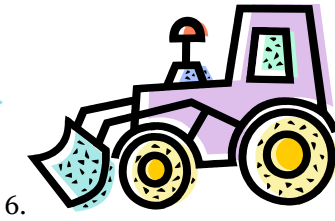
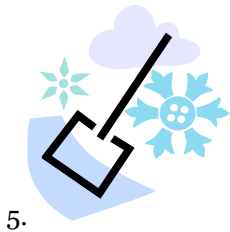
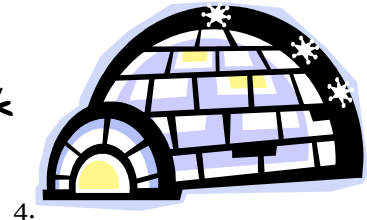
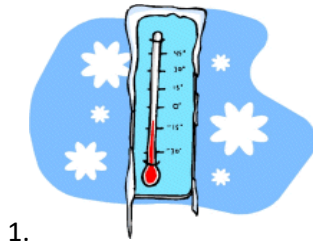


# ALL ABOUT SNOW



**frozen, icicle, frost, below zero, snowman,  
ice rink, igloo, snow angel, snowflake, ice  
cube, snowplough, snow fight, snow ball,  
snow shovel**

# SNOW FACTS

## Form the questions to the answers below:

1. ....?

The average snowflake is made up of 180 billion molecules of water and falls at a speed of 3.1mph. The largest recorded snowflake was 15 inches wide.

2. ....?

The grit is rock salt. The salt lowers the freezing point of the snow on the road and helps it to melt. The grit component helps tyres to grip the road.

3. ....?

Snow is white, not blue, because its crystalline structure reflects white light in all directions. Ice is more dense and so appears clear.

4. ....?

oC produces the perfect snowball. The best ones are made in advance and stored for a few hours to firm them up. Dig deep for snow that's easier to pack.

5. ....?

The heaviest snowfall in the UK was in 1695. It snowed every day in London for 5 weeks - and the Thames froze over. The snow didn't fully clear till mid-April.

6. ....?

The biggest snowman was built by the villagers of Bethel in Maine, USA in 2008. It was 122ft 1in tall & weighed 13,000,000lb. The eyes were 5ft wreaths.

7. ....?

Below -30C, there is usually not enough moisture in the air for it to snow, but it is technically possible at any temperature. Snow has fallen at -41C.



# Snow Facts | Cheat Sheet

<http://www.youtube.com/watch?v=KUQEU4FFHPg>

1. What does snow need to rise above the ground?

.....

2. What happens to the snow when the temperature is around freezing?

.....

3. What happens when it gets colder?

.....

4. Is it possible to find two identical snowflakes? Why/why not?

.....

5. Did the scientists manage to create two identical snowflakes?

.....

