



AGC
THE CONSTRUCTION
ASSOCIATION

July 2022

Construction Data Sources and Current Trends

Ken Simonson

Chief Economist, AGC of America

ken.simonson@agc.org

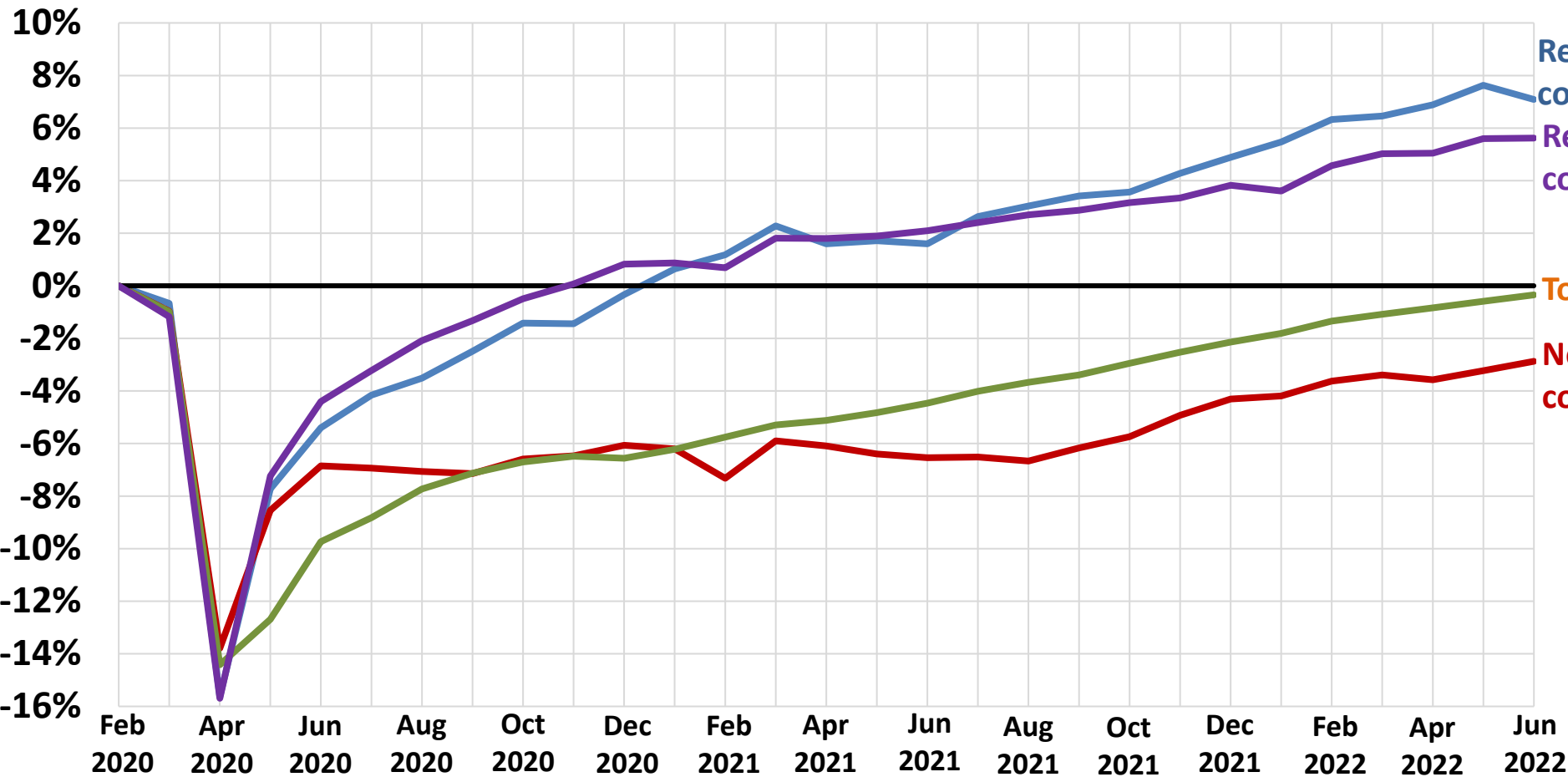


Change since Feb. 2020:
Number Percent

Res building construction	59,500	7.1%
Res specialty trades construction	120,000	5.6%
Total nonfarm	-524,000	-0.3%
Nonres construction	-133,700	-2.9%

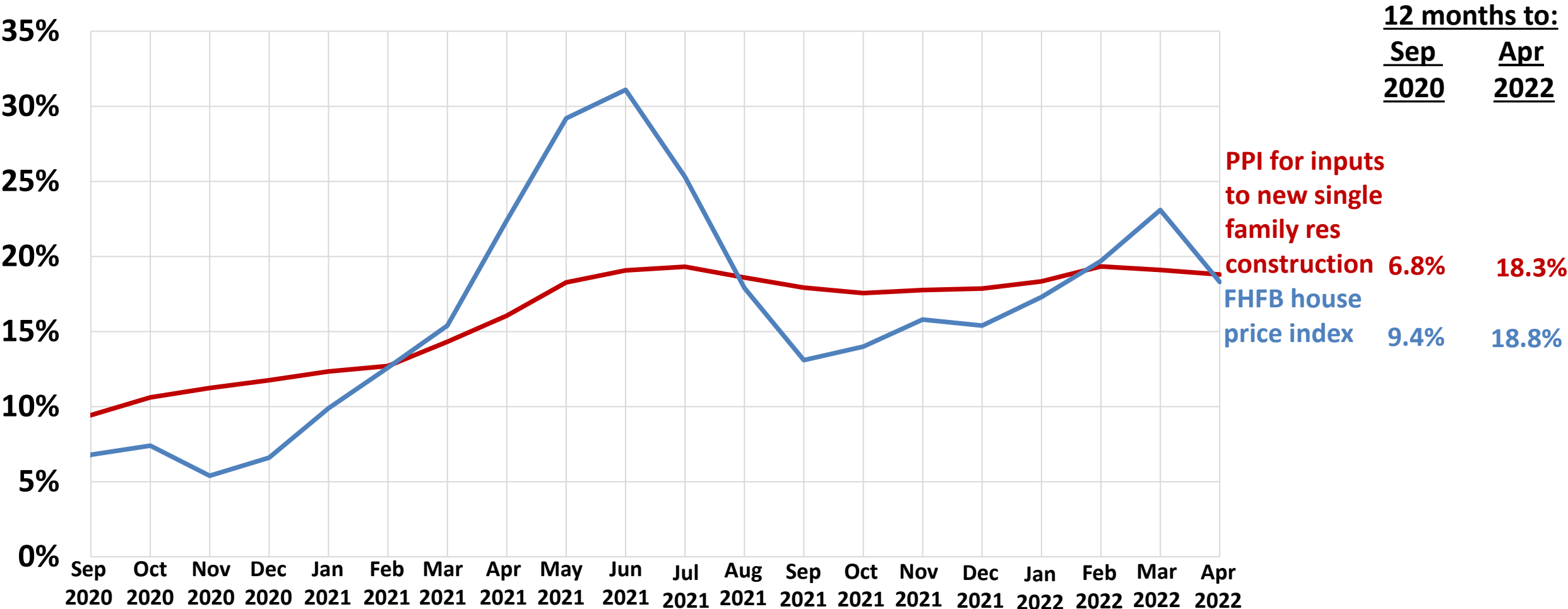
Total Nonfarm & Construction Employment, Feb. 2020–Jun. 2022

cumulative change (seasonally adjusted)



Single-family construction costs vs. median sales prices

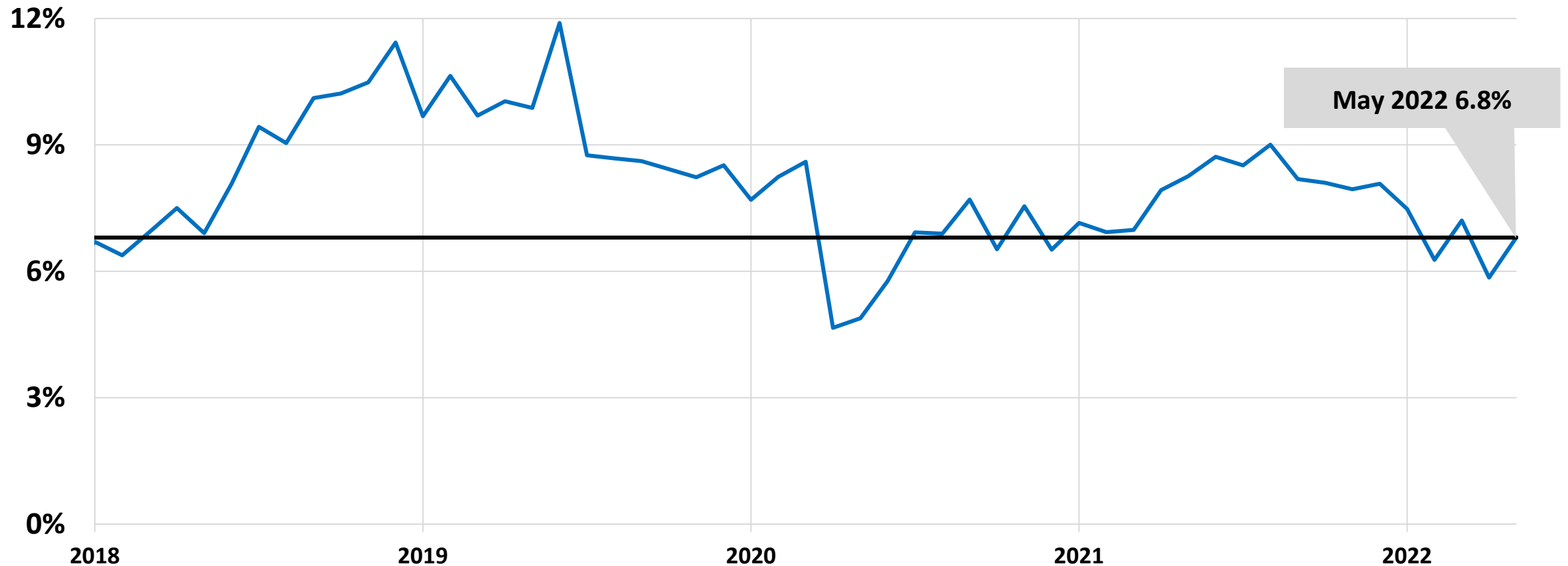
Year-over-year change, Sep 2020–Apr 2022, not seasonally adjusted



Average hourly earning of production and nonsupervisory employees in residential building construction in excess of total private sector



March 2006-May 2022, seasonally adjusted



Data sources for construction

- Spending, starts
- Employment, unemployment, job openings
- Prices, costs
- Industry, firm, establishment size data
- Income
- Leading, suggestive, indirect indicators

Construction spending

- www.census.gov/constructionspending
 - Monthly value of construction put in place for 170+ types of structures; private, state & local, federal
 - Annual value for selected nonres spending by state
- www.bea.gov (national income & product accounts)
 - Quarterly GDP components: residential investment; private nonresidential structures (4 types quarterly, 20 annually); government structures

Construction starts

- www.census.gov/construction/nrc (Census/HUD)
 - Monthly residential units (not \$) started, permits, completed, under construction; single-family, 2-4 units, 5+ units; U.S. & 4 regions
 - Quarterly starts and completions by purpose & design
 - Length of time from authorization to start, and start to finish
 - Annual characteristics of new housing
- www.construction.com (Dodge Data & Analytics)
 - Monthly value of residential, nonres building, nonbuilding starts; full value in month posted; detailed press release; fee for custom data
- www.ConstructConnect.com
 - Monthly value of nonres building, heavy engineering (civil) starts; full value in month posted; not seasonally adjusted; detailed press release; fee for custom data

Employment, unemployment, openings

- www.bls.gov/ces (national employment situation)
 - Monthly national employment (5 NAICS codes in press release; 35+ on website); unemployment total & rate (sector total, not seasonally adjusted)
- www.bls.gov/sae (state and metro employment)
 - Monthly state employment (combined with mining & logging in DC, DE, & HI; NAICS detail varies by state)
 - Monthly metro employment (358 metros, most combined with mining & logging; not seasonally adjusted)
- www.bls.gov/jlt (Job Openings & Labor Turnover Survey)
 - Monthly hires, separations, end-of-month openings

Prices, costs

- www.bls.gov/ppi (BLS producer price indexes)
 - Monthly indexes for final demand construction, 5 nonres building & 4 subcontractor types, many materials & inputs (most not seasonally adjusted)
- www.bea.gov (BEA national income & product accounts)
 - Quarterly price indexes for GDP components: residential investment; private nonresidential structures; government structures
- www.census.gov/construction/cpi/ (Census construction price indexes)
 - Monthly price index for new single-family houses under construction
 - Quarterly price index for new single-family houses sold
- <https://www.fhwa.dot.gov/policy/otps/nhcci/> (Federal Highway Admin.)
 - Quarterly National Highway Construction Cost Index
- www.RSMeans.com (RSMeans)
 - Quarterly cost indexes for materials, installation (318 cities); fee

Industry, firm, establishment data

- www.bls.gov/cew (BLS Quarterly Census of Employment and Wages)
 - Quarterly count of establishments, average weekly wage; employment (6-digit NAICS codes, all counties & MSAs, 9 establishment sizes)
- www.census.gov/programs-surveys/cbp.html (County Business Patterns)
 - Annual count of establishments, employment, payroll (6-digit NAICS codes, all counties & MSAs, 9 establishment sizes)
- www.sba.gov/advocacy/firm-size-data (SBA Office of Advocacy)
 - Annual data by firm employment size, receipts size (2012); firm births, deaths, growth, decline; varying levels of industry, geographic detail
- www.irs.gov/uac/tax-stats-2 (IRS Statistics of Income)
 - Annual tax return data (date, detail vary by legal form of organization)
- <http://www.census.gov/econ/census/>
 - 2017 count of firms, employees, receipts (detailed industry, geography)

Output, earnings, compensation

- www.bea.gov (GDP by industry)
 - Quarterly value added, gross output, intermediate inputs (full sector)
 - Quarterly value added, earnings by state
- www.bea.gov/industry/io_annual.htm (input-output tables)
 - Annual (varying levels of sector detail)
- www.bls.gov/oes/current/naics2_23.htm (occupational employment)
 - Annual employment total, hourly & annual wages by occupation
- www.bls.gov/ect/#data (Employment Cost Index, Employer Cost for Employee Compensation)
 - Quarterly compensation, wages, benefits by type (full sector)
- <https://www.census.gov/programs-surveys/economic-census.html>
 - 2017 count of firms, employees, receipts (detailed industry, geography)

Leading, suggestive and indirect indicators

- <http://new.aia.org/resources/10046-the-architecture-billings-index> (AIA)
 - Monthly diffusion index of change in billings by architecture firms
- www.construction.com (Dodge Momentum Index)
 - Monthly index of commercial, institutional building projects in planning
- www.nahb.org/en/research/housing-economics/housing-indexes/housing-market-index.aspx (NAHB/Wells Fargo Housing Market Index)
 - Monthly index of home builders' sentiment; quarterly for multifamily
- www.federalreserve.gov/monetarypolicy/beigebook/default.htm (Beige Book)
 - 8 times/year survey of demand for housing, construction, materials
- www.ManpowerGroup.com (Manpower Employment Outlook Survey)
 - Quarterly diffusion index of construction employers' hiring plans
- www.federalreserve.gov/releases/G17/ (Industrial Production)
 - Monthly index of production of construction supplies

AGC economic resources

(email ken.simonson@agc.org)



- *The Data DIgest*: weekly 1-page email (subscribe at <http://store.agc.org>)
- *Construction Inflation Alert*:
<https://www.agc.org/learn/construction-data/agc-construction-inflation-alert>
- ConsensusDocs Price Escalation Resource Center:
<https://www.consensusdocs.org/price-escalation-clause/>
- Surveys, state and metro data, fact sheets: www.agc.org/learn/construction-data
- Monthly press releases: construction spending; producer price indexes; national, state, metro employment with rankings:
<https://www.agc.org/newsroom>

