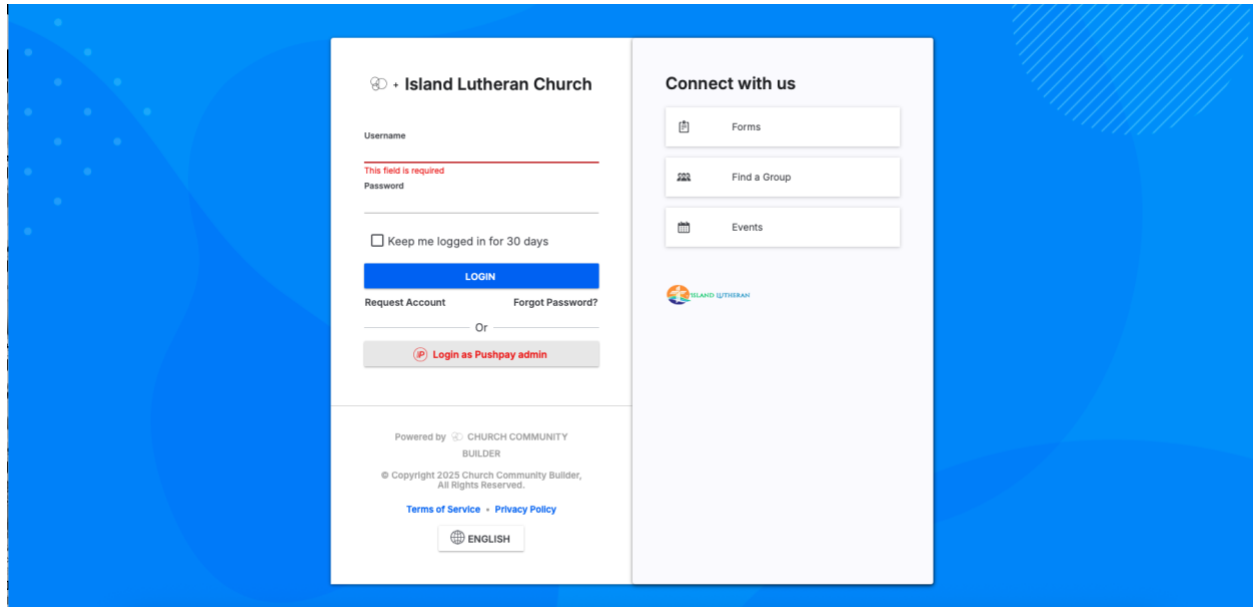


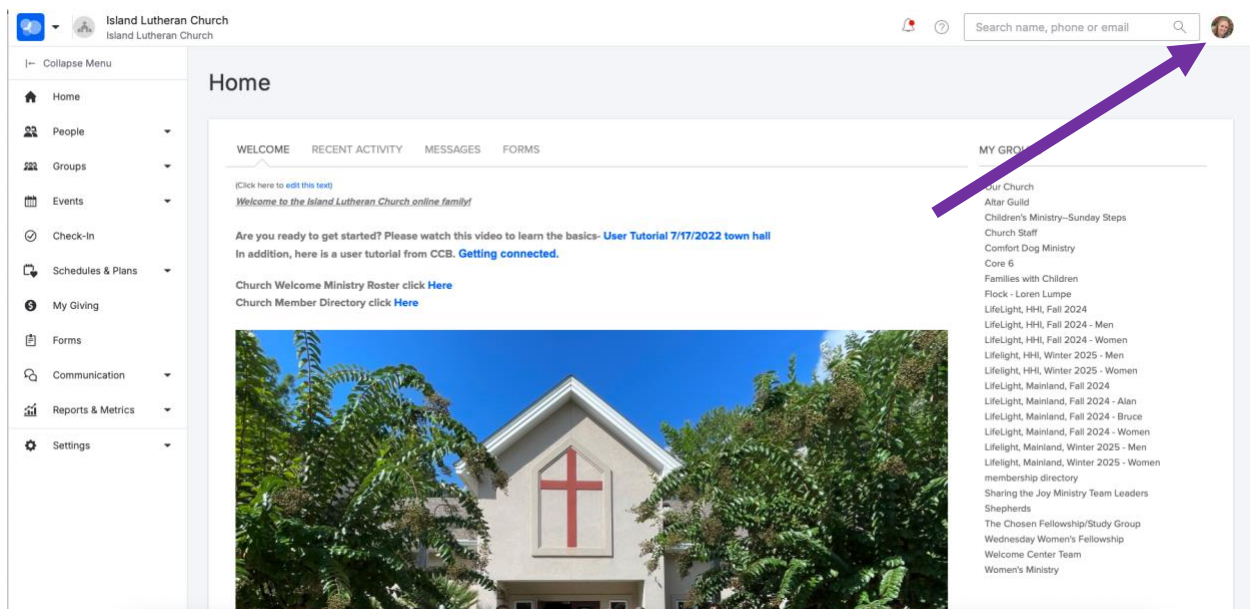
Update Directory Picture

Login – islandlutheranchurch.ccbchurch.com



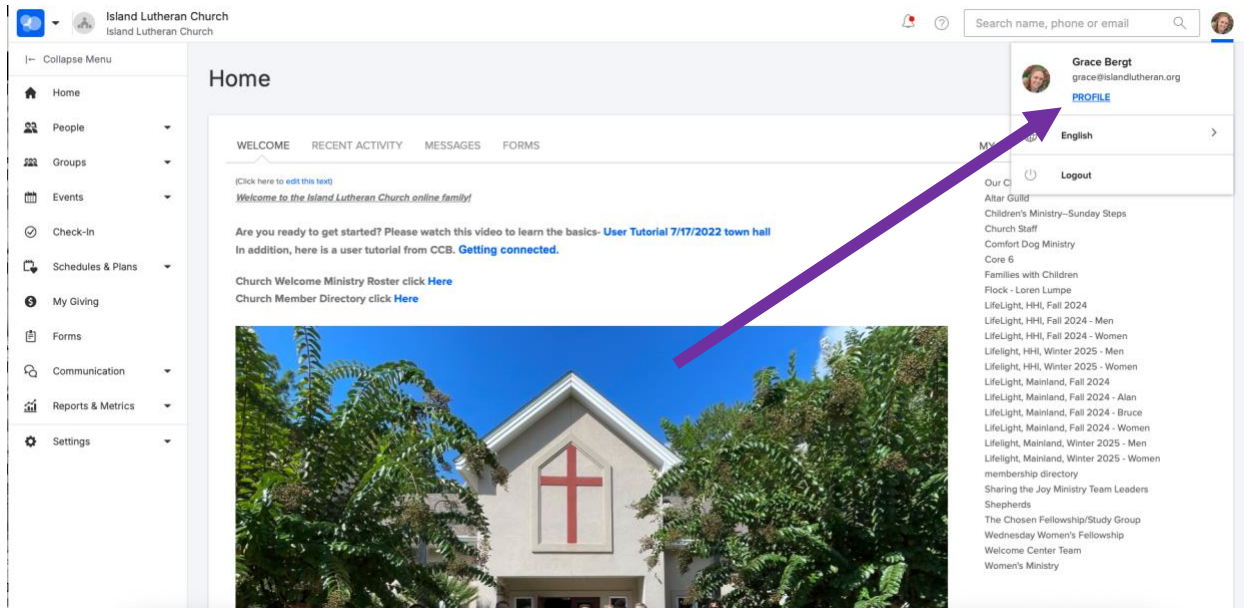
The image shows a login page for Island Lutheran Church. The page has a blue background with a white login form in the center. The form includes fields for Username and Password, a "Keep me logged in for 30 days" checkbox, a "LOGIN" button, and links for "Request Account" and "Forgot Password?". Below the login form, there is a link to "Login as Pushpay admin" and a footer section with "Powered by CHURCH COMMUNITY BUILDER", copyright information, and links for "Terms of Service" and "Privacy Policy". To the right of the login form, there is a "Connect with us" section with buttons for "Forms", "Find a Group", and "Events".

Click on your profile in the upper right-hand corner



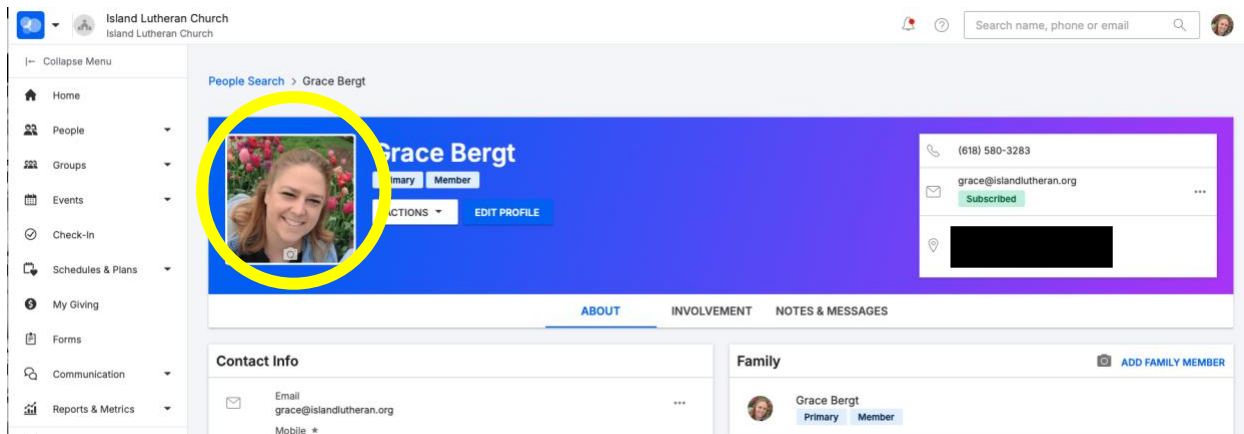
The image shows the home page of the Island Lutheran Church website. The page has a light blue header with the church's name and a search bar. A purple arrow points to the user profile icon in the upper right-hand corner. The main content area is divided into sections: "WELCOME" with a video link, "RECENT ACTIVITY", "MESSAGES", and "FORMS". There is also a "MY GROUPS" section on the right side of the page. The footer features a large image of the church building.

Click on “Profile”

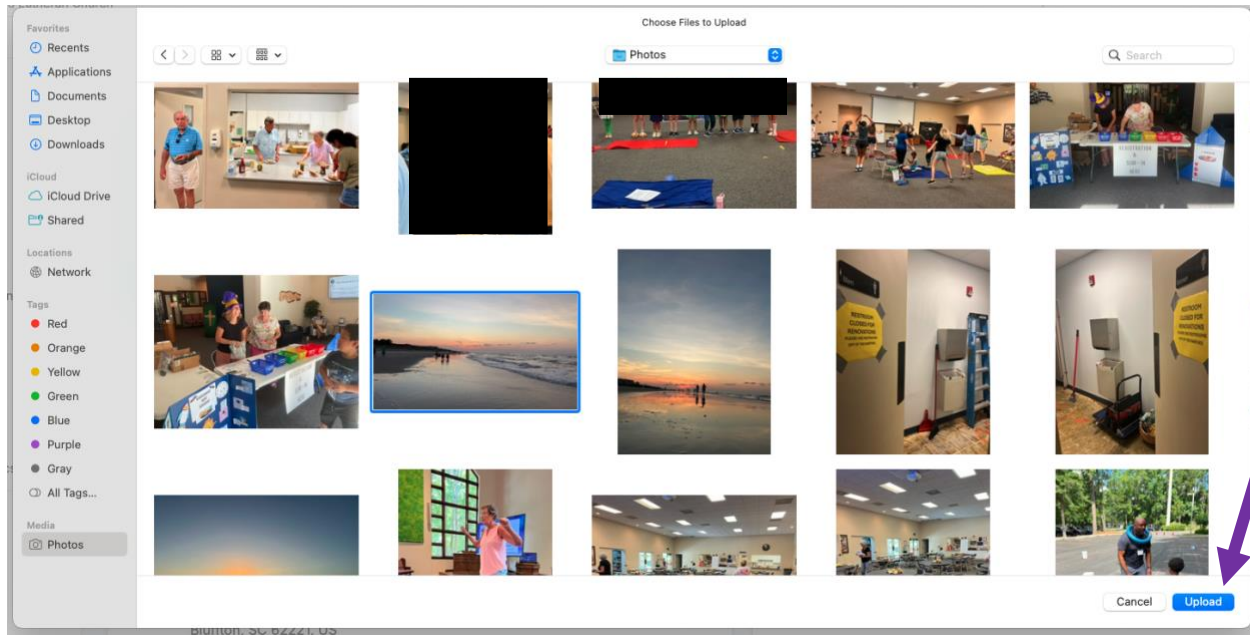


Click on your Profile Picture area in the left-hand of the screen.

(If you have a picture already loaded in your profile, you will see it here. If you do not have a picture loaded, you will see your first & last initial in a gray box in this same location)



Choose the photo you want to include in your profile and Click “Upload”



Crop the photo as desired and click “Add”

