

Rotating corn with the Enlist® trait and Enlist E3® soybeans

With plenty of herbicide flexibility and the right planning, rotation doesn't have to come at the expense of stewardship

Since the introduction of glyphosate – and subsequent resistance issues – our industry has gotten much smarter about rotating chemistries to keep them working over the long term. When farmers find a system that works for them, they are understandably cautious about overusing key chemistries.

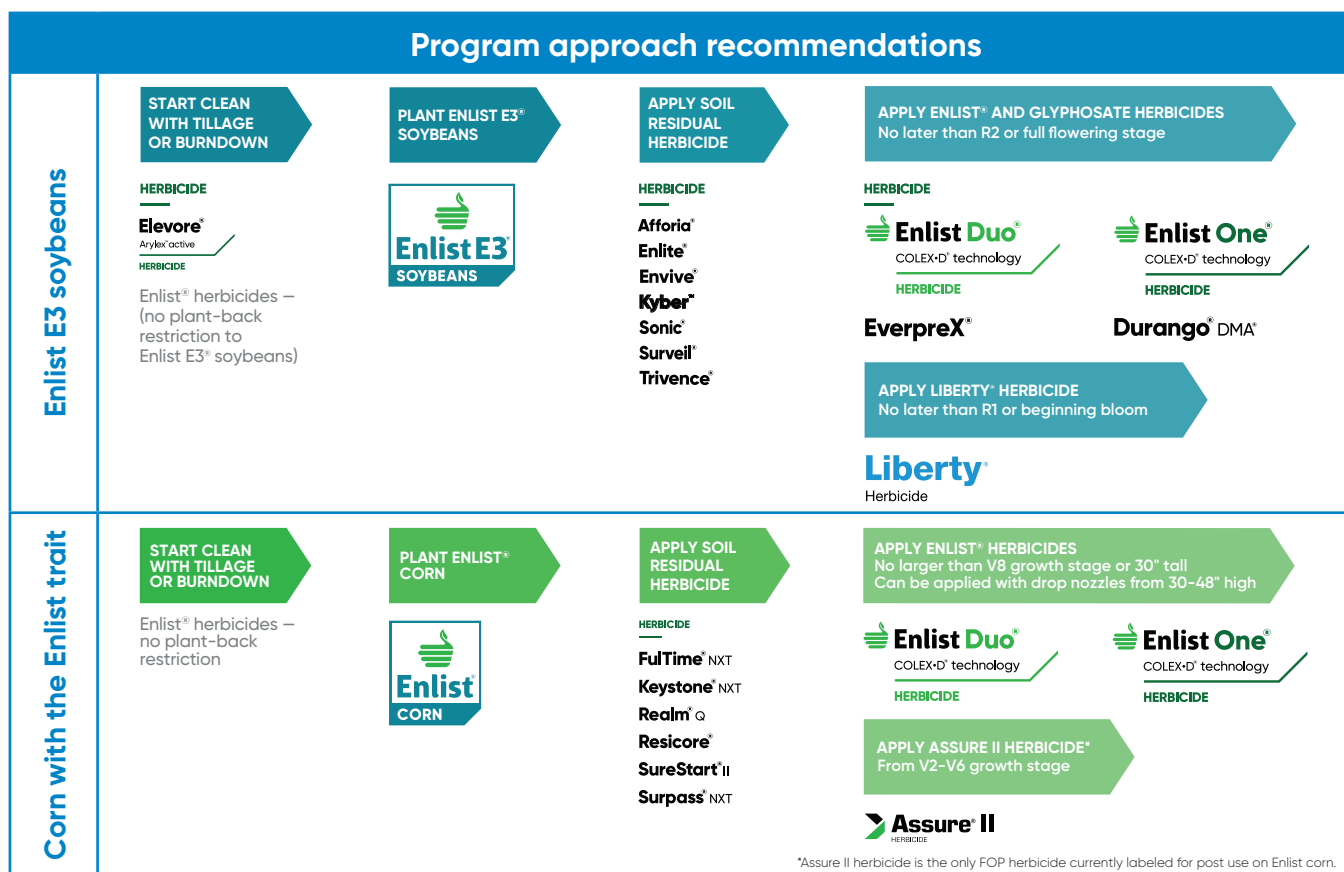
With a growing group of farmers that appreciate the convenience of using the Enlist® system for both corn and soybeans, a smart question is cropping up: Can I rotate corn with the Enlist® trait and Enlist E3® soybeans and still be a good steward of the technology? The short answer is yes, with the right program approach.

Herbicide flexibility is the key

Rotating chemistry is critical to technology stewardship. The Enlist system already has this kind of flexibility baked in. Enlist Duo® herbicide, a combination of 2,4-D choline (group 4) and glyphosate (group 9), provides two modes of action against weeds, while Enlist One® herbicide, which is straight-goods 2,4-D choline, can be tank-mixed with hundreds of qualified products. This makes it simple to incorporate chemistries

with different classes and modes of action for a program approach. You can find all of these approved tank-mix partners at EnlistTankMix.com.

Enlist crops are also compatible with multiple chemistries for burndown, preemergence and residual applications. The Enlist Product Use Guide highlights common options for both Enlist E3 soybeans and corn with the Enlist trait (see diagrams), to create a program approach within the season. For soil residuals, be sure to always use a true broad-spectrum product that is not from group 4 or group 9. In post-emergence passes, consider using a layered residual, such as S-metolachlor, for longer-lasting weed control. As you choose herbicides for subsequent, rotational seasons, make sure you are also incorporating different classes from what was used on the previous year's crop.



*Assure II herbicide is the only FOP herbicide currently labeled for post use on Enlist corn.

* ® Trademarks of Corteva Agriscience and its affiliated companies. Liberty®, LibertyLink® and the Water Droplet Design are trademarks of BASF. The transgenic soybean event in Enlist E3® soybeans is jointly developed and owned by Corteva Agriscience and M.S. Technologies L.L.C. Enlist Duo® and Enlist One® herbicides are not registered for sale or use in all states or counties. Contact your state pesticide regulatory agency to determine if a product is registered for sale or use in your area. Enlist Duo and Enlist One are the only 2,4-D products authorized for use with Enlist crops. Consult Enlist herbicide labels for weed species controlled. Always read and follow label directions. FullTime® NXT and Keystone® NXT are Restricted Use Pesticides. Afforia®, Durango® DMA®, Elevore®, Enlite®, Envive®, EverpreX®, FullTime NXT, Kyber®, Realm® Q, Resicore®, Sonic®, SureStart® II, Surveil® and Trivence® are not registered for sale or use in all states. Keystone NXT is not available for sale, distribution or use in all states. FullTime NXT, Keystone NXT, Resicore, SureStart II and Surpass NXT are not available for sale, distribution or use in Nassau and Suffolk counties in the state of New York. Contact your state pesticide regulatory agency to determine if a product is registered for sale or use in your state. Arylex® is a registered active ingredient. Always read and follow label directions.

© 2022 Corteva.