

Our Funding Partners

- Alabama Department of Conservation & Natural Resources (ADCNR)
- Alabama Department of Economic & Community Affairs (ADECA)
- Delta Regional Authority (DRA)
- Economic Development Administration (EDA)
- Environmental Protection Agency (EPA)
- Gulf Coast Resource Conservation & Development Council (GCRCD)
- Southeast Crescent Regional Commission (SCRC)
- National Oceanic & Atmospheric Administration (NOAA)

Want to know more about one of our funding partners?

Contact our planning staff & grant specialist for more information.

CPED Announcements
SARPC OPEN HOUSE

SARPC is excited to host our first ever Open House Event on Friday, January 30th. We are excited to welcome newly elected officials & existing leaders to our offices to learn more about who SARPC is & all the services we provide throughout our region. It will be a great opportunity for leaders throughout SARPC's Region to gather & get to know each other better. Many mayors, council members, county commissioners, legislators, & other stakeholders are planning to attend & we are so happy to be able to host this event for them.

SARPC PLANNING COMMISSION TRAINING

MARK YOUR CALENDARS! SARPC is happy to announce that we will once again be offering our Region-wide planning commission training to all 30 of our member governments. Held every other year, our training event is a 1-day comprehensive training for planning commissioners & board of adjustment members to learn about planning principles & improve their planning skills. This year, our training class will be taught by Mr. Ben Wieseman, PLA, AICP, MRED, with Place Associates in Birmingham. Place Associates specializes in guiding real estate developers, municipal economic development professionals, & small business owners through the complexities of property development. For more information, visit: <https://www.placeassociates.com/>

Make plans to attend this highly attended event to learn how to do your job as a planner for your community. The event will be held on Thursday, March 26th from 10am-4pm. A formal invitation will be sent to each municipality soon that will provide more details about the event. We hope to see you there!

Community Spotlight - City of Satsuma

SARPC Planners are working with the community in writing a new long-range plan for the City. A large number of citizens turned out at our first meeting to be part of the steering committee who helped develop the community survey & will be an integral part of the development of the City's new Comprehensive Plan. SARPC is excited to be working with Satsuma over the next year as we collect input from the residents to identify the needs & desires of the community.

Available Funding Opportunities

SARPC is ready to assist your municipality with grant proposal writing & project development! Over the next month, we anticipate funding opportunities from several partners including:

- SARPC's Brownfield Grant Program

The purpose of the program is to help redevelop abandoned, idle, undeveloped or under-utilized properties where expansion or redevelopment is hindered by actual or perceived environmental conditions.

The program provides no-cost environmental services designed to facilitate the development of any commercial property, whether a private or public transaction, to help spur economic growth. SARPC has awarded PPM a new contract to assist in pursuing an additional round of EPA Brownfield funding. PPM has a strong record of securing EPA support & delivering Phase I/II ESAs & Clean-up Plans. As this is the final year of the current Brownfield Program, SARPC intends to apply for continued funding to support

redevelopment opportunities. To date, SARPC has funded 18 Phase I & Phase II assessments, an Analysis of Brownfield Clean-up Alternatives (ABCA) & ongoing redevelopment planning for 2 priority sites.

SARPC's Brownfield funds can pay for 100% of any Phase I & Phase II Environmental Assessment at no cost to the property owner.

Additionally, our Brownfield fund can be used for:

- Asbestos Inspections
- Clean-up Planning
- Underground Tank Removals

SARPC is currently taking applications for any commercial property within SARPC's jurisdiction. To apply, contact Nicole Taylor at 251-706-4695 or ntaylor@sarpc.org.

AARP Community Challenge Grant

AARP is accepting applications for the 2026 funding cycle that:

- Deliver tangible improvements to communities, such as new crosswalks, benches, bike lanes, housing designs, & public space enhancements.
- Leverage additional support from public, private, & philanthropic sources
- Help communities overcome policy barriers & implement lasting change
- Foster new collaborations & increase community engagement

2026 Community Challenge Timeline:

- Question & Answer Webinar: January 27th
- Application Deadline: March 4th
- Status Notification: May
- Project Work Begins: June 24th
- Project Completion Deadline: December 15th
- After Action Report Deadline: December 31st

DRA - Community Infrastructure Fund (CIF)

The DRA Community Infrastructure Fund supports public & transportation infrastructure projects, as well as water & sewer enhancements & repairs in Escambia County.

- Minimum Award: \$500,000
- Status: Accepting Applications
- Maximum Award: \$2 Million
- Application Deadline: Accepted on a rolling basis

EDA - Public Works & Economic Adjustment Assistance (PWEAA)

The PWEAA funds infrastructure projects that enhance public/private partnerships & supports economic development. Eligible uses include land acquisition, public works improvements & other developmental facilities.

- Minimum Award: \$600,000 (Public Works), \$150,000 (Economic Adjustment)
- Maximum Award: \$5 million (Public Works), \$2.5 Million (Economic Adjustment)
- Status: Accepting Applications
- Application Deadline: Accepted on a rolling basis

EDA - FY 2025 Disaster Supplemental Grant Program

The Economic Development Administration (EDA) is now accepting applications for Disaster Recovery 2025 funding. Mobile County is the only eligible county for this funding. This program supports communities in preparing for, and recovering from the economic impacts of disasters.

Readiness Path: Planning and Capacity Building

- Economic Recovery and Economic Resilience strategic planning
- Organizational capacity building (e.g., recovery coordinators)
- Predevelopment activities such as architectural and engineering plans or permit applications
- Grant Range: Non-construction grants generally range from \$250,000 to \$500,000

Implementation Path : Project Development and Construction

- Construction or upgrades to public infrastructure
- Incubator or workforce development facility construction
- Technical assistance projects
- Revolving Loan Fund programs
- Grant Range: Non-construction grants generally range from \$100,000 to \$5 million, while construction grants typically range from \$2 million to over \$20 million

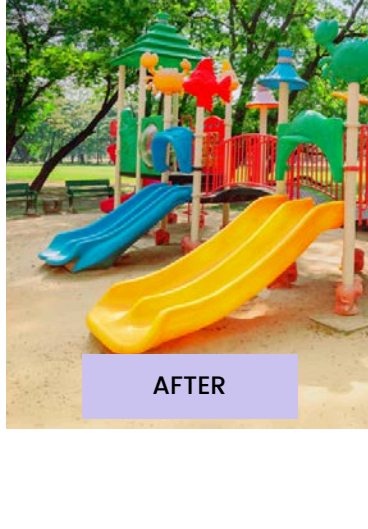
Applications are accepted on a rolling basis.

Love Your Community (LYC)

Love Your Community is an on-going anti-litter program sponsored by the Mobile County Commission in partnership with Keep Mobile Beautiful, Inc., The Alabama Coastal Heritage Trust and Clean Water Future. The program is designed to encourage citizen involvement in community clean-up and beautification in Mobile County.



BEFORE



AFTER

To receive updates or request assistance, contact SARPC's Grants Specialist, Martin Lee, at (251) 444-1663 or mlee@sarpc.org.

SARPC's Economic Development Update

Senior Community Service Employment Program (SCSEP)

The PY 2025 -2026 Quarter 3 began on January 1, 2026. SCSEP Participants are now eligible to work up to 29 hour per week at their Host Agencies.

We are currently seeking interested seniors & Host Agencies. This service is free of charge to Host Agencies. Please contact Sydney Smith at 251-706-4627 or sydneysmith@sarpc.org for more information.

Comprehensive Economic Development Strategy (CEDs)

SARPC's CEDs annual update is complete for year 2025. Please visit the link [here](#) to view the updated document, which provides an update of economic activities throughout the region over the last year.

SARPC's Revolving Loan Fund (RLF)

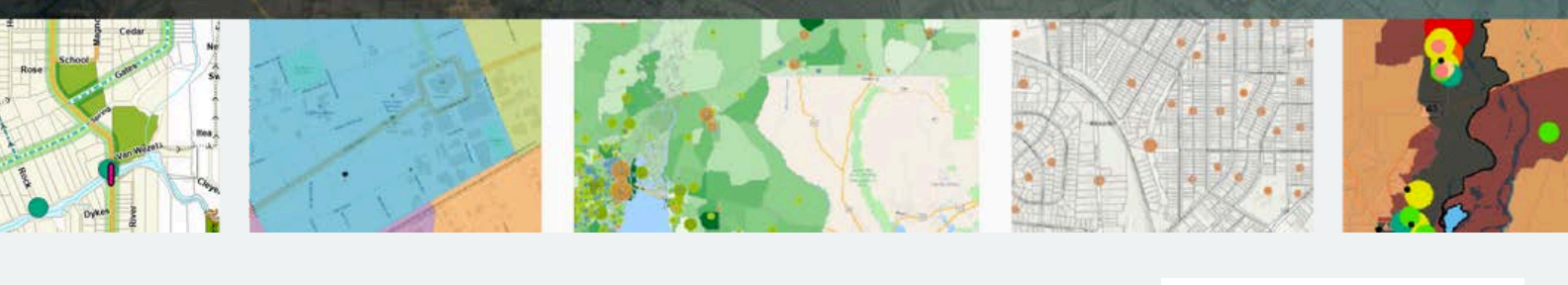
SARPC recently nominated 5 members to its RLF Committee. These individuals bring expertise that will help guide loan approvals & set long-term goals for the program. The RLF provides low-interest capital to small & mid-sized businesses seeking to expand, while SARPC's Microloan Fund supports entrepreneurs launching or strengthening new businesses in the region. For more information, contact Martin Lee at 271-444-1663 or mlee@sarpc.org.

SARPC's Geographical Information Systems (GIS) Updates

We recently completed a new public-facing tool - the [Brownfields Site Planner App](#) - an interactive web application designed to help planners, developers, & community stakeholders identify & prioritize redevelopment opportunities across Mobile, Baldwin, & Escambia Counties. While tailored for brownfield revitalization, its data layers & filtering capabilities can support a wider range of planning efforts. We encourage everyone to check it out!

The Launch of the new Community Planning & Economic Development (CPED) Hub Site will launch at the SARPC Open House.

Community Planning & Economic Development Data Hub
South Alabama Regional Planning Commission ~ Positively Impacting People and Communities



We are excited to announce the launching of our new Hub site, a one-stop shop for member governments to learn more about what we do in the Community Planning & Economic Development (CPED) Department here at SARPC. Scan the QR code to the right or visit the URL below to view your municipal plan status, existing projects across the region, resources for community resilience, economic development statistics, funding opportunities, and more!



community-and-economic-development-sarpc.hub.arcgis.com/

Events, Training & Conferences

Mobile Chamber's Annual State of the City & County

CPED staff attended the Mobile Chamber's Annual State of the City & County on January 22nd. The event featured the newly inaugurated Mayor Spiro Cheriogotis & the Mobile County Commission. The speakers shared updates in the key priorities for the city and county.

EDAA 2026 Winter Conference

CPED staff will attend the 2026 EDAA Winter Conference on January 26th - 28th. The event will be held at the Renaissance Montgomery Hotel & Spa.

Saraland AHEPA 2026 Health Fair

SCSEP staff plans to attend the Saraland AHEPA 2026 Health Fair on March 14th. This event supports residents with informational booths, health screenings, healthy snacks, & fitness demonstrations.

PLAN - Plan Lower Alabama Now Monthly Meeting

Planning staff attends monthly PLAN meetings to network & learn planning practices from local community stakeholders & professionals throughout Baldwin & Mobile Counties. Through these workshops, SARPC Planners have learned valuable practices & information that we pass on to our member governments to help them improve their communities. Topics learned & shared include wetland protection & example ordinances, short-term vacation rentals, site plan & subdivision plat reviews, RV Park standards, exempt subdivisions, food truck ordinances, & much more!

Mobile County Municipal Association Monthly Meeting

The Mobile County Municipal Association conducts a meeting each month that is held at one of the eleven municipalities in Mobile County. The Mobile County Municipal Association promotes leadership qualities, communications, cooperation and mutual interests in Mobile County while preserving & protecting the autonomy of its member municipalities & governing bodies. SARPC Staff attends these monthly meetings to learn of new developments & other events occurring throughout the County. These meetings provide an excellent way for community leaders & stakeholders to come together to enjoy fellowship & networking opportunities.

SARPC's Community Planning & Economic Development Department has been on the move this past month-traveling across the region and beyond to explore new ways to better serve our member governments and their residents.

Our goal remains clear: to bring back innovative tools and practical strategies that inspire and catalyze social & economic growth while celebrating & preserving the natural & cultural resources that define our communities.

Staff Contact Information

Director Nicole Taylor 251-706-4659 ntaylor@sarpc.org	GIS Analyst Sarah Wraight 251-706-4635 swraight@sarpc.org	Grants Specialist Martin Lee 251-444-1663 mlee@sarpc.org
Principal Planner Chastidy Piper 251-706-4639 cpiper@sarpc.org	GIS Intern AJ Cox 251-706-4639 acox@sarpc.org	Economic Development Coordinator Sydney Smith 251-706-4627 sydneysmith@sarpc.org
Planner II Farnaz Bayat fbayat@sarpc.org	GIS Intern Baylor Nolen bnolen@sarpc.org	

Follow Us On Social Media

- Facebook: [South Alabama Regional Planning Commission](#), [SARPC Senior Community Service Employment Program](#)
- LinkedIn: [South Alabama Regional Planning Commission](#), [SARPC Senior Community Service Employment Program](#)
- Instagram: [southalpc](#), [sarpc_scsep](#)
- X: [SouthALPlanning](#), [sarpcscsep](#)

