

## Our Funding Partners

- Alabama Department of Economic & Community Affairs (ADECA)
- Delta Regional Authority (DRA)
- Economic Development Administration (EDA)
- Environmental Protection Agency (EPA)
- Southeast Cresent Regional Commission (SCRC)
- Alabama Department of Conservation & Natural Resources (ADCNR)
- National Oceanic & Atmospheric Administration (NOAA)
- Gulf Coast Resource, Conservation & Development Council (GCRC&D)

Want to know more about one of our funding partners?

Contact our planning staff & grant specialist for more information.

## SARPC's Brownfield Grant Program

SARPC was awarded a \$500,000 EPA grant for a Brownfields Assessment project.

Our planners are working with PPM Consultants to target areas in the region. PPM will conduct environmental assessments to determine if properties are contaminated. Our end goal is to identify sites that can be redeveloped & marketed to recruit new economic development opportunities to our communities.

### What Is The Brownfield Program?

The purpose of the program is to help redevelop abandoned, idle, undeveloped or under-utilized properties where expansion or redevelopment is hindered by actual or perceived environmental conditions.

The program provides no-cost environmental services designed to facilitate the development of any commercial property, whether a private or public transaction, to help spur economic growth.

### What Does It Pay For?

Grant funds can be used to pay for environmental assessments & other upfront environmental planning costs to help move commercial properties towards redevelopment, such as:

- Phase I & II Environmental Site Assessments (ESAs)
- Asbestos inspections
- Underground storage tank removals (when eligible)
- Cleanup planning/cost estimating

These activities are among some of the no-cost services that can be provided for public, private, or non-profit entities on both public and privately owned properties. SARPC can provide these services for eligible sites/entities, minimizing upfront costs that can be put towards better use in the actual development & redevelopment of a commercial property.

### What Are The Benefits?

- Will make the property more attractive by identifying potential concerns regarding the environmental condition of the property.
- Will cover the costs of environmental studies, reducing capital expenditures associated with All Appropriate Inquiries (AAI) prior to purchasing & redeveloping a commercial property.

### Who Can Apply?

Any commercial property within SARPC's jurisdiction is eligible for funding, regardless of ownership.

### When to Apply?

SARPC is currently accepting applications.

### How To Apply?

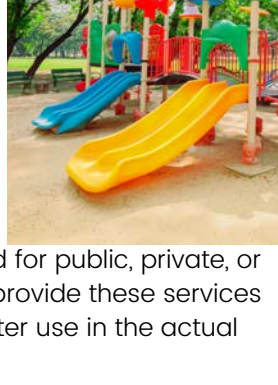
Call: 251-706-4659 Email: [ntaylor@sarpc.org](mailto:ntaylor@sarpc.org)

### Want to Know More?

Visit: <https://www.epa.gov/brownfields/brownfields-cleanup-grants>



With the help of Brownfield funds, the abandoned property above could be transformed into a beautiful community park.



## Available Funding Opportunities

SARPC is ready to assist your municipality with grant proposal writing & project development.

Over the next month, we anticipate funding opportunities from several partners including:

- Alabama Coastal Area Management Program (ACAMP)
- Delta Regional Authority (DRA)
- Economic Development Administration (EDA)
- Gulf Coast Resource Conservation & Development (GCRC&D) Council
- SARPC's Brownfield Grant Program
- SARPC's Revolving Loan Fund (RLF)
- T-Mobile Hometown Grant

To receive updates or request assistance, contact Martin Lee at [mlee@sarpc.org](mailto:mlee@sarpc.org).

## SARPC's Revolving Loan Fund (RLF)

Need Funding for Your Business? SARPC's Revolving Loan Fund Can Help!

Are you a small or medium-sized business owner in need of extra funding to complete a project? Or launching a start-up & looking for financial support to get off the ground? SARPC offers a Revolving Loan Fund designed to stimulate economic growth by providing businesses with access to affordable financing.

Our RLF features competitive interest rates & can be used alongside private financing to help your business expand.

Special opportunities are available to those seeking to redevelop Brownfield sites.

Contact SARPC today to learn how this funding opportunity can support your business goals!

Terms & conditions apply. Please contact Martin Lee 251-444-1663 or [mlee@sarpc.org](mailto:mlee@sarpc.org) for more information.

## ACAMP - Coastal Zone Management

This grant supports projects that enhance, protect & improve the management of natural, cultural & historical coastal resources.

Funds can be used to develop or amend comprehensive plans, zoning ordinances & subdivision regulations, as well as to acquire land to increase public access to coastal resources

- Minimum Award: \$20,000
- Maximum Award: \$50,000
- Status: Accepting Applications
- Application Deadline: May 9

## DRA - Community Infrastructure Fund (CIF)

This DRA grant is available to those in Escambia County.

The DRA Community Infrastructure Fund supports public & transportation infrastructure projects, as well as water & sewer enhancements & repairs.

- Minimum Award: \$500,000
- Maximum Award: \$2 million
- Status: Accepting Applications
- Application Deadline: Accepted On a rolling basis

## DRA - States' Economic Development Assistance Program (SEDAP)

This DRA grant will be available to those in Escambia County.

The grant pays for projects that involve:

- Basic Public Infrastructure
- Transportation Infrastructure
- Workforce Development
- Small Business Development with a focus on Entrepreneurship

SEDAP's funding cycle will open soon.

## EDA - Public Works & Economic Adjustment Assistance (PWEAA)

This grant funds infrastructure projects that enhance public/private partnerships & supports economic development.

Eligible uses include land acquisition, public works improvements & other developmental facilities.

- Minimum Award: \$600,000 (Public Works), \$150,000 (Economic Adjustment)
- Maximum Award: \$5 million (Public Works), \$2.5 million (Economic Adjustment)
- Status: Accepting Applications
- Application Deadline: Accepted On a rolling basis

## Gulf Coast RC&D Council

This grant funds projects that provide educational opportunities for students, improve local quality of life & conserving/using natural resources.

- Minimum Award: \$5,000
- Maximum Award: \$15,000
- Status: Opening April 1
- Application Deadline: June 30

## T-Mobile Hometown Grant

This grant funds community placemaking projects to enhance local spaces & foster community engagement

- Maximum Award: \$50,000
- Status: Accepting Applications
- Application Deadline: June 30



## Senior Community Service Employment Program (SCSEP)

The Senior Community Service Employment Program is a community service & work-based training program for older workers with low incomes & low employment prospects.

The provided community service training serves as a bridge to unsubsidized employment by providing the skills & knowledge needed to successfully complete employment search activities.

### Our Mission

The mission of the SCSEP Program is to promote economic self-sufficiency for older individuals.

### Our Goal

An important goal of the SCSEP Program is for the participants to get a job outside of the program.

### Who Is Eligible?

To be eligible for participation, all the following factors must be met:

- Be age 55 or older
- Be unemployed at the time application
- Meet low-income guidelines (household income cannot exceed 125% of the Federal Poverty Guideline)
- Reside in SARPC's region
- Have available participation time remaining (applicable to former participants only)

### Available Assignments

SCSEP is currently seeking interested seniors for positions in Baldwin & Mobile Counties.

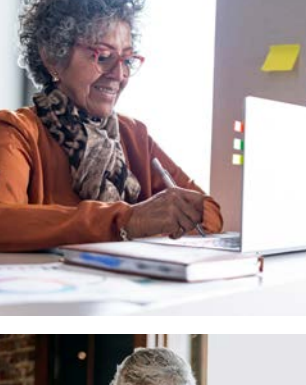
To learn more about our available assignments, contact us at 251-706-4627 or [ssnow@sarpc.org](mailto:ssnow@sarpc.org)

### Where Does Training Take Place?

Eligible participants are matched to a community service assignment at a Host Agency, a local nonprofit organization or government agency with 501(c)(3) designation. Host Agencies can include the following:

- Area Agency on Aging
- Libraries
- Senior Centers
- Day-Care Centers
- Nutrition Centers
- State & Local Government Offices
- Hospitals
- Schools
- & more!

This service is offered at no-cost to our Host Agencies.



### Apply To Be A Host Agency

SCSEP is currently seeking Host Agencies in Baldwin County. Host Agencies are responsible for providing

training & supervision for participants.

SCSEP is responsible for costs associated with payroll, worker's compensation insurance & all related employment taxes.

To apply, contact us at 251-706-4627 or [ssnow@sarpc.org](mailto:ssnow@sarpc.org)

## Mobile Chamber of Commerce 2025 Annual Meeting

The Mobile Chamber of Commerce hosted its 188th annual meeting on March 20th at the Mobile Cruise Terminal. Our staff, along with other SARPC staff, attended the fun evening of networking--including a short, energetic program.

## AssistAL: The Funding Lab

The Funding Lab is the AssistAL informational workshop about the details of Alabama's State Small Business Credit Initiative (SSBCI) capital program, the application process & how business can get support along the way. The event will be held in Baldwin County on April 4th.

## Alabama Association of Resource Conservation & Development (RC&D) Council 2025 Annual Conference

Our staff will be attending the Alabama Association of Resource Conservation & Development (RC&D) Council 2025 annual conference in Opelika from April 27th - 30th. The annual conference brings together Alabama's nine local councils & the state association with local & statewide partners to foster relations & collaboration to bring about growth to Alabama's communities.

## "Don't Play Games With Your Health" Senior Health Fair

Our staff will be attending the upcoming "Don't Play Games With Your Health" senior health fair in Saraland on May 8th. The health fair helps attendees learn what is available to them & how they can remain as independent as possible in their own homes.

## Mobile County Municipal Association Meeting

The Mobile County Municipal Association conducts a meeting each month that is held at one of the eleven municipalities in Mobile County. The Mobile County Municipal Association promotes leadership qualities, communications, cooperation and mutual interests in Mobile County while preserving and protecting the autonomy of its member municipalities and governing bodies. SARPC Staff attends these monthly meetings to learn of new developments and other events occurring throughout the County. These meetings are always well attended and provide an excellent way for the Community leaders and stakeholders to come together to enjoy fellowship and networking opportunities, all of which help make Mobile County grow and prosper.

## PLAN - Plan Lower Alabama Now Monthly Meeting

Planning staff attends monthly PLAN meetings to network and learn planning practices from local community stakeholders and professionals throughout Baldwin and Mobile Counties. Through these workshops, SARPC Planners have learned valuable planning practices and information that we pass on to our member governments to help them improve their communities. Topics learned and shared include wetland protection and example ordinances, short-term vacation rentals, site plan and subdivision plat reviews, RV Park standards, exempt subdivisions, food truck ordinances, and much more!

## Staff Contact Information

**Director**  
Nicole Taylor  
251-706-4695  
[ntaylor@sarpc.org](mailto:ntaylor@sarpc.org)

**GIS Analyst**  
Sarah Wraight  
251-706-4635  
[swraight@sarpc.org](mailto:swraight@sarpc.org)

**Principal Planner**  
Chastidy Piper  
251-706-4639  
[cpiper@sarpc.org](mailto:cpiper@sarpc.org)

**Economic Development Coordinator**  
Sydney Snow  
251-706-4627  
[ssnow@sarpc.org](mailto:ssnow@sarpc.org)

**Grants Specialist**  
Martin Lee  
251-444-1663  
[mlee@sarpc.org](mailto:mlee@sarpc.org)

**GIS Intern**  
Lydia Sherer  
[lsheer@sarpc.org](mailto:lsheer@sarpc.org)

## Follow Us On Social Media

### Facebook

- South Alabama Regional Planning Commission
- SARPC Senior Community Service Employment Program

### LinkedIn

- South Alabama Regional Planning Commission
- SARPC Senior Community Service Employment Program

### X

- SouthALplanning

### Instagram

- southalpc
- sarpc\_scsep

## Community Updates

### Citronelle

SARPC is completing a new zoning ordinance & zoning map for project for the city of Citronelle, providing more commercial and recreations zones to help attract new economic activity to the community.

### Dauphin Island

Dauphin Island is updating their comprehensive plan to keep up with housing & tourism demands.

### Magnolia Springs

Magnolia Springs continues to work with SARPC planners to update their Comprehensive Plan. The project is expected to near completion by April 1st.

### Robertsdale

Robertsdale is continuing to work with SARPC planners to update their Comprehensive Plan. The plan is expected to near completion by April 1st.

### Silverhill

Silverhill is working with SARPC planners to create new subdivision regulations & zoning ordinances to keep up with housing & tourism demands.



Happy Easter

