

CAL FIRE NEWS RELEASE

California Department of Forestry and Fire Protection



CONTACT: Incident Information Line:
530-303-2455
Media Line
530-806-3212

RELEASE DATE: September 14,
2021
10:00 a.m.

WHAT: Evacuation Orders Downgraded

WHEN: Effective Immediately

WHERE: El Dorado County

Evacuation Order Update:

The following Evacuation Orders have been downgraded to Evacuation Warnings in El Dorado County:

- Crystal Basin B: From Ice House Road east to the border of desolation wilderness and from the Placer County line, south to Granite Springs Road and the area south of Granite Springs Road to Highway 50 at Wrights Lake Road

The following Evacuation Warnings have been lifted in El Dorado County:

- Crystal Basin A: West of Ice House Road, from the Placer County line, South to Highway 50 and East of Junction Reservoir.
- The area of Happy Valley Road from Mt Aukum Road to Cosumnes Mine Road.

REMINDER: There is still a temporary Emergency Closure in effect for the Eldorado National Forest through the end of September. This closure includes all National Forest Service lands, roads (including Mormon Emigrant Trail) and trails within the Eldorado National Forest. See Forest Order [03-21-14](#) for more information. To request access to private lands within the warning area, accessible via closed Forest Service roads, please contact your local Forest Service District Office. The Lake Tahoe Basin Management Unit is closed under the Regional Emergency Closure of all National Forests in California. See the [Regional Order](#) for more information. Recreation residences and other permittees should contact their permit administrator for questions regarding access when their area becomes open for repopulation.

Repopulation consists of complex coordination between fire, law enforcement, public works, and utilities to ensure the safety of residents and fire responders alike.

The public is reminded to stay vigilant on current fire conditions. Please continue to adhere to road closures and any evacuation orders and warnings. A reminder to drive slowly and yield to emergency personnel in the area. **There will be smoke in the respective areas as firefighters**

continue firefighting operations. If at any time you feel unsafe, please call 911. For tips on returning home after wildfire visit: [Returning Home Checklist - Ready for Wildfire](#)

For more specific information and resources from your local utility company visit the links below:

PG&E	https://tinyurl.com/PGEcaldor
Sacramento Municipal Utility District	https://tinyurl.com/SMUDcaldor
El Dorado Irrigation District	https://tinyurl.com/EIDcaldor
Grizzly Flats CSD:	https://tinyurl.com/Grizzlycaldor
Liberty Utilities:	https://tinyurl.com/Libertycaldor
ATT:	https://tinyurl.com/ATTCaldor
Comcast:	https://tinyurl.com/ComcastCaldor

Please go to: www.tinyurl.com/EDSOEVAC for an online evacuation map.

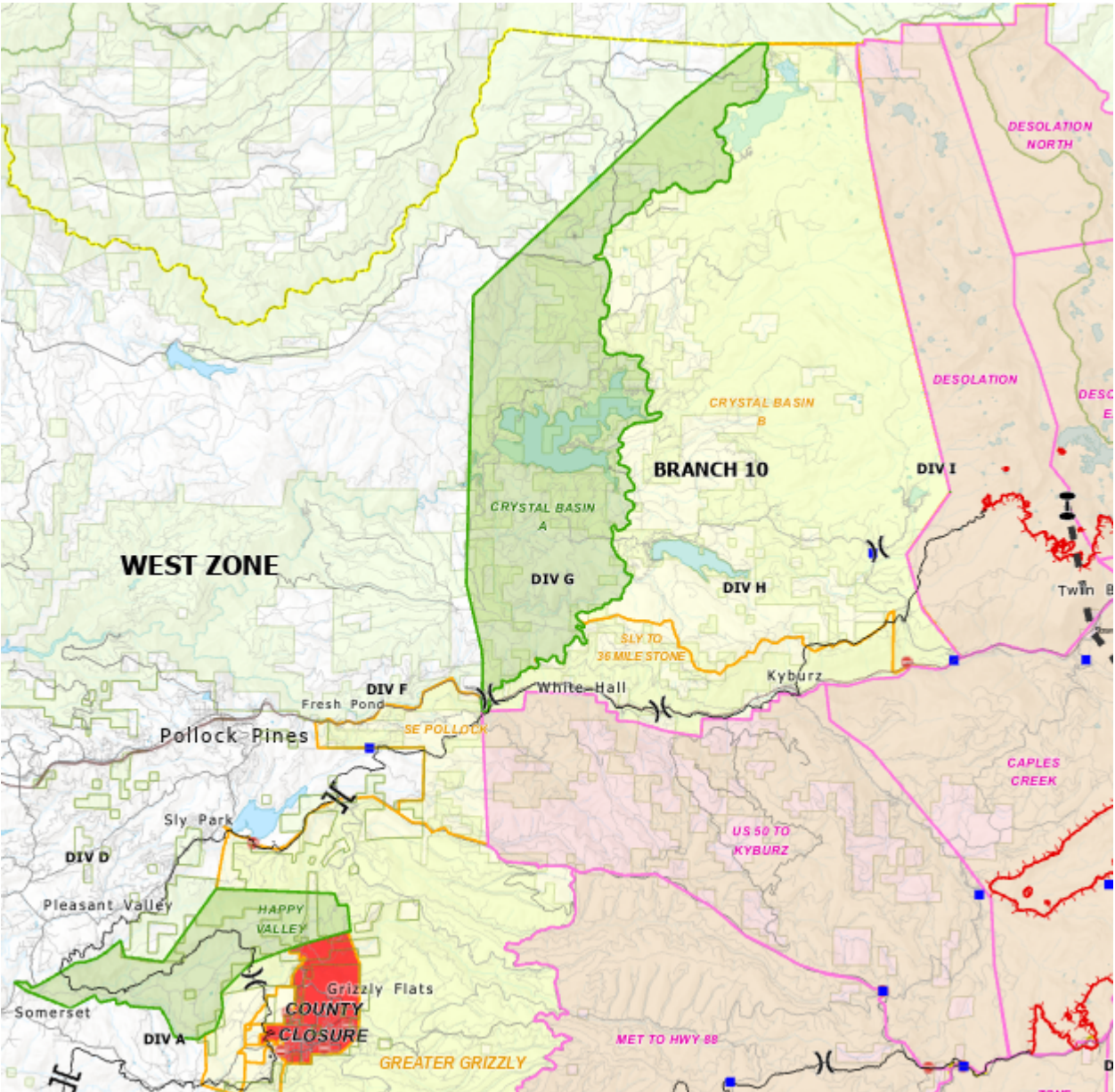
All previous evacuation orders and warnings remain in effect.



For additional information regarding the Caldor Fire, scan the QR code above or visit <https://linktr.ee/imt6>

Red area indicates Evacuation

Yellow area indicates Evacuation Orders downgraded to Warning.



###