

CAL FIRE NEWS RELEASE

California Department of Forestry and Fire Protection



CONTACT: Incident Information Line:
530-303-2455
Media Line
530-806-3212

RELEASE DATE: September 16, 2021
9:00 a.m.

WHAT: **Evacuation Orders Downgraded**

WHEN: **Effective Immediately**

WHERE: **EI Dorado County**

Evacuation Order Update:

The following Evacuation orders have been downgraded to Evacuation Warnings in EI Dorado County:

- South of Mormon Emigrant Trail to Highway 88 and west on Highway 88 to Hams Station.
- South of Highway 50 from Ice House Road to Silver Fork Road, to include the community of Kyburz and east of Mormon Emigrant Trail to Highway 88.

REMINDER: There is still a temporary Emergency Closure in effect for the Eldorado National Forest through the end of September. This closure includes all National Forest Service lands, roads (including Mormon Emigrant Trail) and trails within the Eldorado National Forest. See Forest Order [03-21-14](#) for more information. To request access to private lands and recreational residences accessible via closed Forest Service roads, please contact your local Forest Service District Office.

The Lake Tahoe Basin Management Unit closure order [19-21-05](#) remains in effect for the following backcountry areas: Desolation Wilderness, Meiss Country, Barker Pass and McKinney/Rubicon through September 19, 2021.

Repopulation consists of complex coordination between fire, law enforcement, public works, and utilities to ensure the safety of residents and fire responders alike.

The public is reminded to stay vigilant on current fire conditions. Please continue to adhere to road closures and any evacuation orders and warnings. A reminder to drive slowly and yield to emergency personnel in the area. **There will be smoke in the respective areas as firefighters continue firefighting operations.** If at any time you feel unsafe, please call 911. For tips on returning home after wildfire visit: [Returning Home Checklist - Ready for Wildfire.](#)

For more specific information and resources from your local utility company visit the links below:

| | |
|--|---|
| PG&E | https://tinyurl.com/PGEcaldor |
| Sacramento Municipal Utility District | https://tinyurl.com/SMUDcaldor |
| El Dorado Irrigation District | https://tinyurl.com/EIDcaldor |
| Grizzly Flats CSD: | https://tinyurl.com/Grizzlycaldor |
| Liberty Utilities: | https://tinyurl.com/Libertycaldor |
| ATT: | https://tinyurl.com/ATTcaldor |
| Comcast: | https://tinyurl.com/Comcastcaldor |

Please go to: www.tinyurl.com/EDSOEVAC for an online evacuation map.

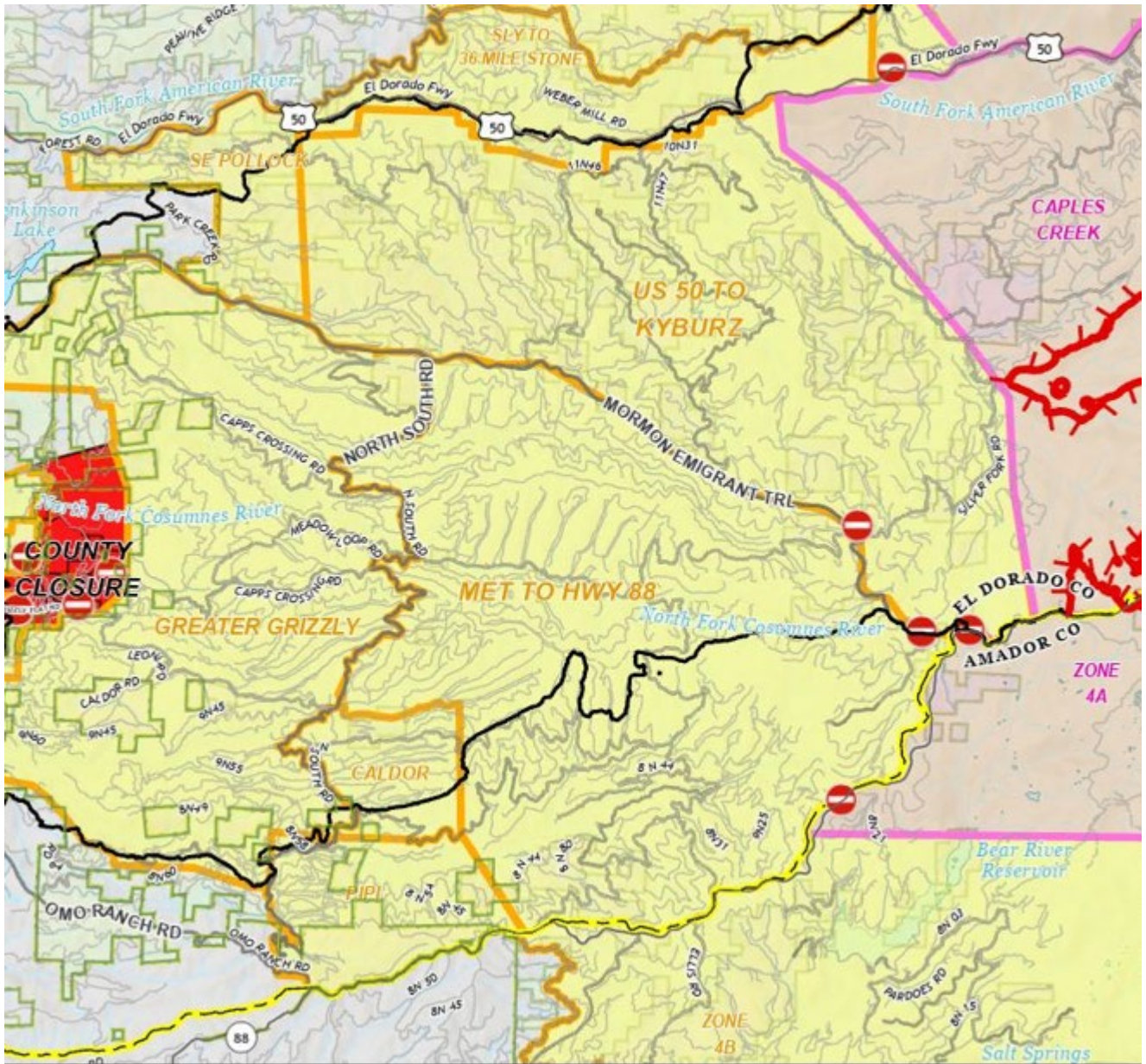
All previous evacuation orders and warnings remain in effect.



For additional information regarding the Caldor Fire, scan the QR code above or visit <https://linktr.ee/imt6>

Red area indicates evacuation orders.

Yellow area indicates evacuation orders downgraded to warning.



###