

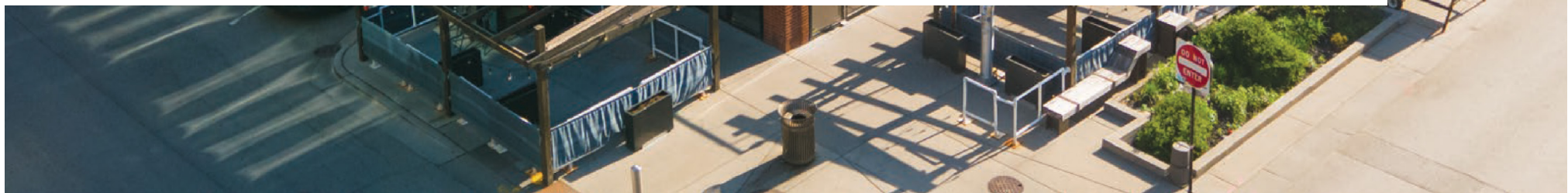


# 950 WEST FULTON

AVAILABLE FOR LEASE

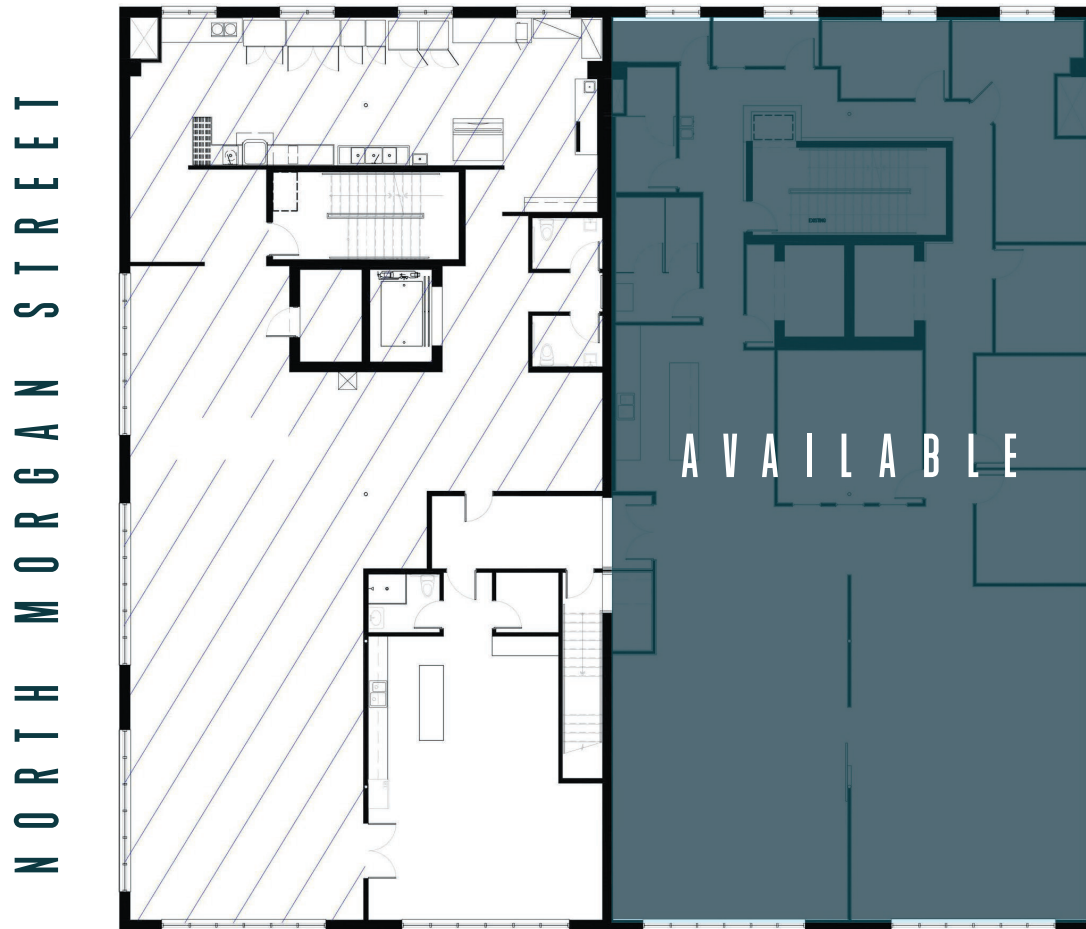
## OFFICE & SHOWROOM SPACE

**For questions and tours:**  
MF Partners LLC  
464-266-1616



# 950 WEST FULTON

## FLOOR PLAN



\*Not to Scale

WEST FULTON STREET

## Premier move-in ready office suite in the heart of Fulton Market

Space includes open area, kitchenette, private offices, meeting rooms with Fulton Street windowlines.

Across the street from Google's Midwest HQ and 3 blocks from McDonald's Global HQ.

Preeminent Morgan's on Fulton event space on site, along with soon to be Avli Restaurant Group.

Adjacent to The Emily Hotel.

Surrounded by Michelin rated restaurants, multiple residential and commercial developments, and numerous high-profile Fulton Market HQs.

**SIZE:**

4,460 RSF

**CONDITION:**

MOVE-IN READY

**DATE AVAILABLE:**

TODAY

**ZONING:**

DS-3

**CEILING HEIGHT:**

~10'

**WARD/ALDERMAN:**

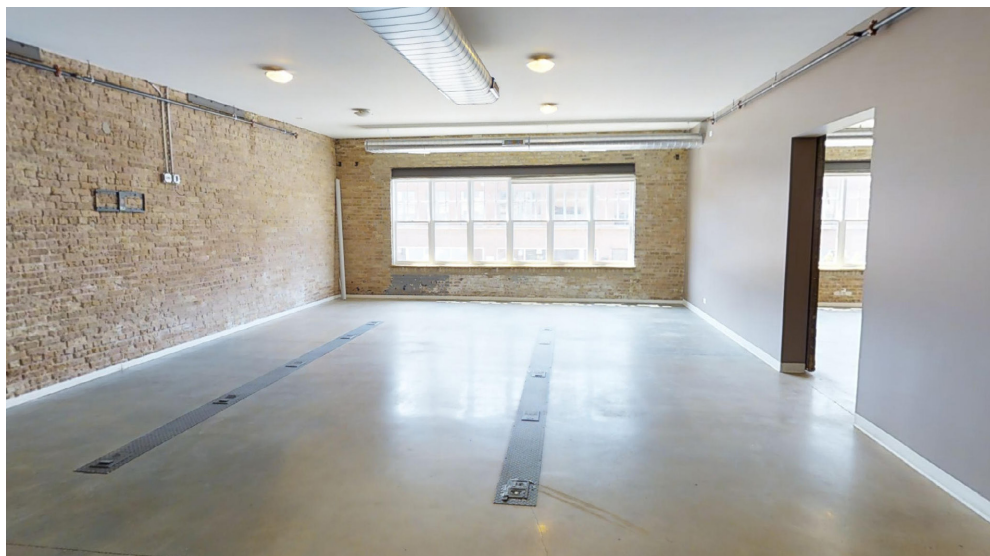
27/BURNETT

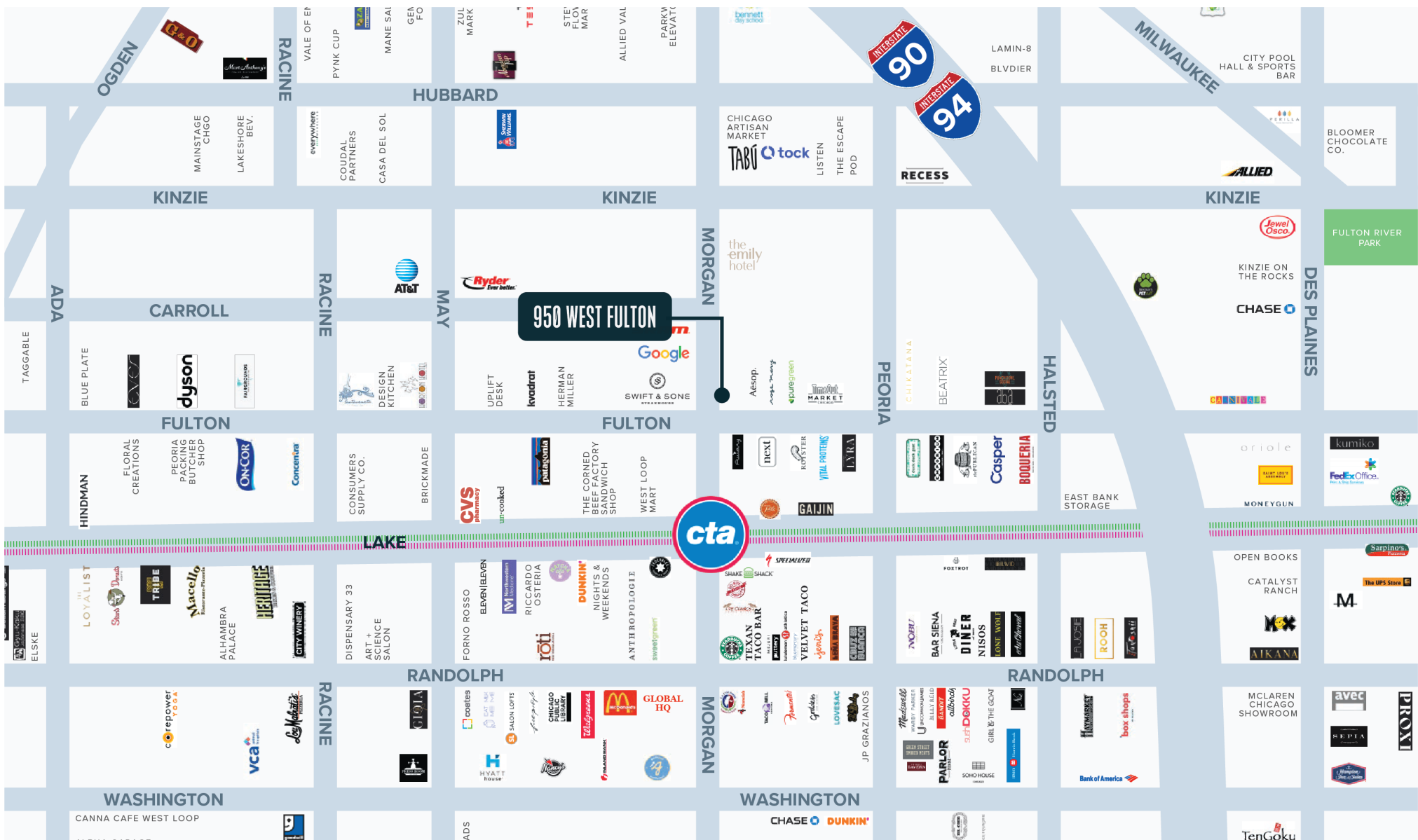




# 950 WEST FULTON

2nd FLOOR OFFICE  
& SHOWROOM  
SPACE INTERIORS





# 950 WEST FULTON

AREA MAP  
**Fulton Market**  
Chicago, IL 60607