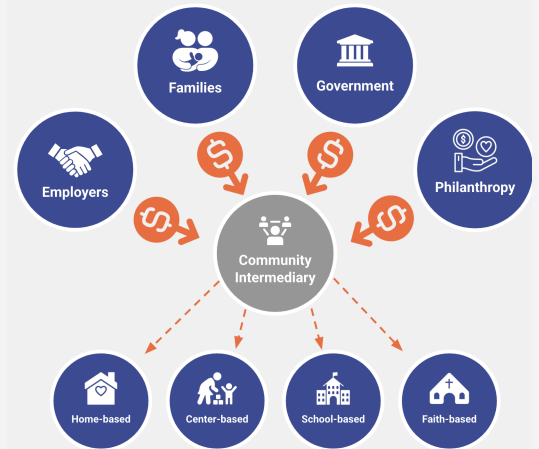


Missouri Community Childcare Exchange: Helping Communities Create Affordable Childcare

Families Face a Gap in Childcare Affordability.

- Missouri families making under 150% of the federal poverty level can receive state support for childcare to help parents remain in the workforce. For a family of four, this is \$48,225.
- Working families making too much for subsidy often struggle to afford childcare.
- The average cost of infant care in Missouri is \$12,000/ year. This is 17% of the median family income in our state. **The cost is unattainable for many families and can push them out of the workforce.**
- Other states – like Michigan and Kentucky – have developed creative solutions where the state, families, and employers partner to make childcare more accessible and affordable.



The Missouri Community Childcare Exchange Creates Community-Specific Solutions to Help Families Afford Quality Childcare.

- In this model, a community organization (called an “intermediary”) brings together resources from the state, families, and employers to fund childcare slots. **This creates a ramp to help working families afford quality childcare.**
- Each partner would pay roughly one-third of the cost of the childcare slot. Philanthropy could also be used to offset employer or family costs, based on an individual community’s needs. Greater state support could be provided in high-need childcare deserts.
- Employers benefit from a stable supply of childcare to help recruit and retain workers, and childcare providers can maintain and grow their slots through this funding.
- The chart shows how **childcare that is currently unaffordable for families can become accessible through this unique public-private partnership.**

