

ALESCO BLUE LAKE II ASSOCIATION

31875 CORYDON ROAD, SUITE 110, LAKE ELSINORE, CA 92530

±4,034 SF INDUSTRIAL
CONDOMINIUM FOR LEASE



FOR MORE INFORMATION, PLEASE CONTACT:

CAREY PASTOR | Senior Vice President

(951) 297-7434 | careyp@cbcsocalgroup.com

CalDRE License # 01403298



**COLDWELL
BANKER
COMMERCIAL**
SC

ALESCO BLUE LAKE II ASSOCIATION

31875 CORYDON ROAD, SUITE 110, LAKE ELSINORE, CA 92530

±4,034 SF INDUSTRIAL
CONDOMINIUM FOR LEASE



PROPERTY HIGHLIGHTS

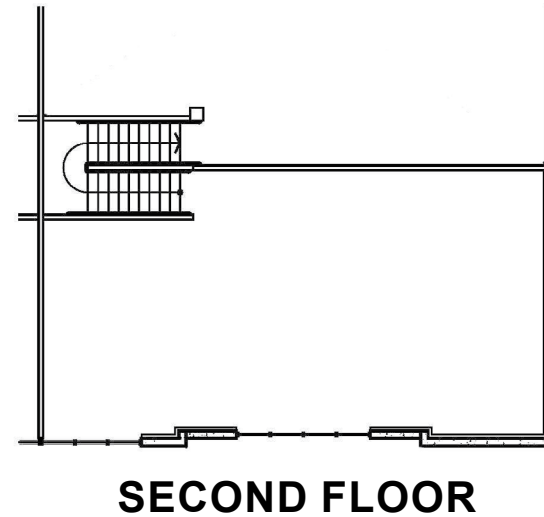
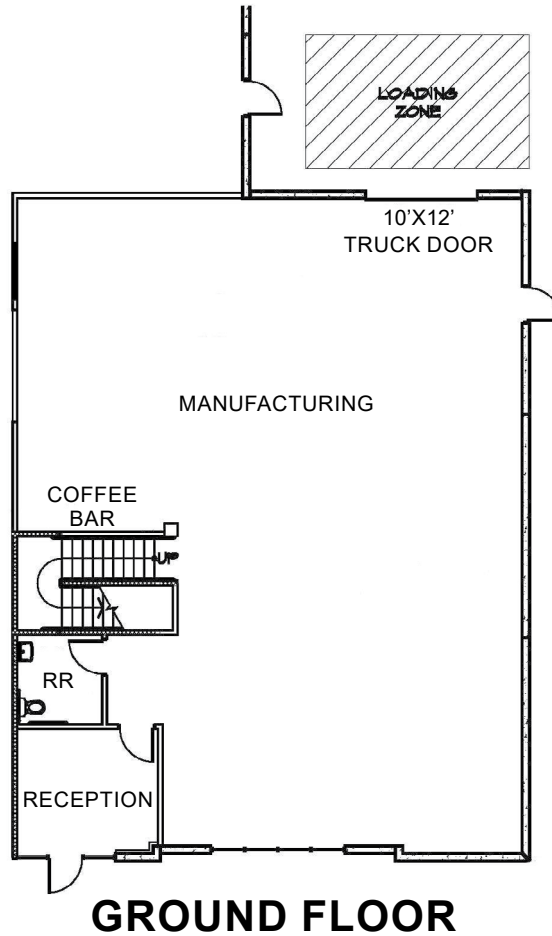
- ±4,034 SF Industrial Condo For Lease
- Covered loading area
- Office improvements include a reception area and restroom
- 200 Amp 277 /480v power supply
- M-1 Limited Manufacturing Zoning – City of Lake Elsinore
- Offered for lease at \$4,781.00 per month (\$1.00 SF base rent + \$0.185 SF OA fee)

ALESCO BLUE LAKE II ASSOCIATION

31875 CORYDON ROAD, SUITE 110, LAKE ELSINORE, CA 92530

±4,034 SF INDUSTRIAL
CONDOMINIUM FOR LEASE

FLOOR PLAN



ALESCO BLUE LAKE II ASSOCIATION

31875 CORYDON ROAD, SUITE 110, LAKE ELSINORE, CA 92530

±4,034 SF INDUSTRIAL
CONDOMINIUM FOR LEASE



Coldwell Banker Commercial and the Coldwell Banker Commercial Logo are registered service marks licensed to Coldwell Banker Commercial Affiliates. Each Office is Independently Owned and Operated. All information contained herein has been obtained from sources deemed reliable. However, no warranty or guarantee is made as to the accuracy of the information.

CalDRE License # 02089395

ALESCO BLUE LAKE II ASSOCIATION

31875 CORYDON ROAD, SUITE 110, LAKE ELSINORE, CA 92530

±4,034 SF INDUSTRIAL
CONDOMINIUM FOR LEASE



FOR MORE INFORMATION, PLEASE CONTACT:

CAREY PASTOR

Senior Vice President

951.297.7434

careyp@cbsocalgroup.com

CalDRE # 01403298

27720 Jefferson Avenue | Suite 100-B

Temecula | California | 92590

t 951.200.7683 | f 951.239.3147

cbsocalgroup.com



**COLDWELL
BANKER
COMMERCIAL**

SC