

## FRONTIERS IN ACADEMIC PATHOLOGY

Department of Pathology, Molecular and Cell-Based Medicine

# Transplant and Therapeutic Pathology

A One-Day Course for Pathologists and Clinicians

**Friday, January 31, 2020**

New York Academy of Medicine  
1216 Fifth Avenue (at 103rd St.)  
New York, NY 10029

### Department Chair and Course Director

**Carlos Cordon-Cardo, MD, PhD**

Chairman and Professor of Pathology, Molecular,  
and Cell-Based Medicine  
Professor of Genetics & Genomic Sciences  
Professor of Oncological Sciences  
Icahn School of Medicine at Mount Sinai  
New York, NY

### Co-Director

**Jeffrey S. Jhang, MD**

Professor and Vice Chairman for Clinical Pathology  
Director, Blood Bank and Transfusion Services  
Icahn School of Medicine at Mount Sinai

**Sander S. Florman, MD**

Director Recamati/Miller Transplant Institute  
Professor of Surgery  
Icahn School of Medicine at Mount Sinai

**Luis M. Isola, MD**

Professor of Medicine, Hematology and  
Medical Oncology  
Professor, Pediatrics  
Icahn School of Medicine at Mount Sinai

2020

<https://mssm.cloud-cme.com/pathology2020>

Sponsored by  
Icahn School of Medicine at Mount Sinai  
Department of Pathology



Icahn School  
of Medicine at  
Mount  
Sinai

# GENERAL INFORMATION

## Course Description

The symposium will consist of a series of lectures and thought-provoking discussions highlighting state of the art of molecular diagnosis in oncology. Topics to be addressed include advanced diagnostic modalities including liquid biopsies, the utility of novel molecular biomarkers in the management of patients with solid malignancies and the use of population-based genomics in the precision medicine.

At the conclusion of this activity, participants will be able to:

- Describe the use and limitations of **molecular biomarkers** in the screening, diagnosis and prognostication of solid tumors.
- Describe the potential for the application of **liquid biopsies** in diagnostic medicine.
- Describe recent and developing approaches toward **experimental diagnostics**.
- Describe new insights gained from the application of **population-based genomics** in diagnostic and precision medicine.

## Who Should Attend

Pathologists, Oncologists, Geneticists, Genomic Scientists and Basic Science Researchers, both in practice and in training.

## Course Location

New York Academy of Medicine  
1216 Fifth Avenue (at 103rd Street)  
New York, NY 10029

Directions: [www.nyam.org/about/visit/](http://www.nyam.org/about/visit/)

## Accreditation

The Icahn School of Medicine at Mount Sinai is accredited by the Accreditation Council for Continuing Medical Education to provide continuing medical education for physicians.

## Credit Designation

The Icahn School of Medicine at Mount Sinai designates this live activity for a maximum of 7.25 *AMA PRA Category 1 Credit(s)*<sup>TM</sup>. Physicians should claim only the credit commensurate with the extent of their participation in the activity.

## Verification of Attendance

Verification of attendance will be provided to all professionals.

## Special Needs

The Icahn School of Medicine at Mount Sinai is in full compliance with provisions of the Americans with Disabilities Act (ADA) and is accessible for individuals with special needs. If you require special accommodations please contact the Page and William Black Post-Graduate School of Medicine at 212-731-7950.

## AGENDA

8:00-8:25 am	<b>BREAKFAST</b>
8:25-8:30	<b>Opening Remarks/Housekeeping</b> Carlos Cordon-Cardo MD, PhD
8:30-9:00	<b>Introduction to Session and Presentation</b> Suzanne Arinsburg, DO
9:00-10:00	<b>HLA ‘Matching’ in the NGS Era: From Alleles to Direct Genetic Comparisons</b> Matthew W. Anderson, MD, PhD, FCAP
10:00-10:15	<b>COFFEE BREAK</b>
10:15-11:15	<b>Biomarker Guided Graft-vs-Host Disease Treatment</b> John Levine, MD
11:15-12:15	<b>Novel Strategies to Enhance Platelet Production In Vitro</b> Avital Mendelson, PhD
12:15-1:15	<b>INDUSTRY LUNCH – Non-CME Lecture</b>
1:15-1:45	<b>Introduction to Session and Presentation</b> Luis Isola, MD
1:45-2:30	<b>Strategies to Expand the Numbers of Functional Human Hematopoietic Stem Cells</b> Ronald Hoffman, MD

# AGENDA

2:30-3:15 **Navigating the Road from Bench to Bedside to Academic Spinout. Is There a Map? One Investigator's Story of an Expanded Cord Blood Stem Cell Therapy Product**  
Colleen Delaney, MD, MSc

3:15-3:30 **COFFEE BREAK**

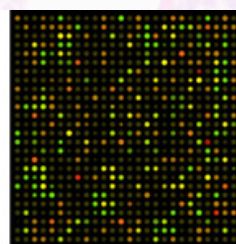
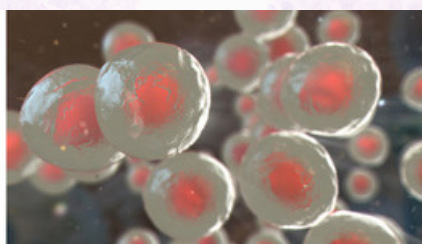
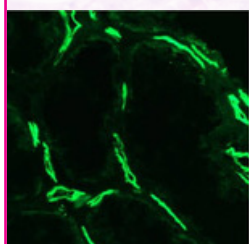
3:30-4:00 **Introduction to Session and Presentation**  
Sander Florman, MD

4:00-4:30 **The HLA Gene as a Candidate Tumor Suppressor**  
Carlos Cordon-Cardo, MD, PhD

4:30-5:15 **Advancements in Histocompatibility Testing have Significant Impact on Solid Organ Transplantation**  
Adriana Zeevi, PhD (D) ABHI

## RECEPTION

5:15-6:00 Location: Reading Room



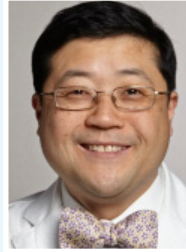
# FACULTY

## Faculty Disclosure

It is the policy of Icahn School of Medicine at Mount Sinai to ensure objectivity, balance, independence, and transparency. Faculty members participating in the planning or implementation of a sponsored activity are expected to disclose to the audience any financial interests that may arise from the relationship. Presenters must also make a meaningful disclosure to the audience of their own interests related to the course material.



**Carlos Cordon-Cardo**  
**MD, PhD**  
Professor and Chairman,  
Department of Pathology, Molecular and  
Cell-Based Medicine  
Icahn School of Medicine at Mount Sinai  
New York, NY



**Jeffrey S. Jhang, MD**  
Professor and Vice Chairman for  
Clinical Pathology  
Director, Blood Bank and Transfusion Services  
Icahn School of Medicine at Mount Sinai  
New York, NY



**Colleen Delaney, MD, MSc**  
Founder and CSO, EVP of Research and  
Development, Nohla Therapeutics  
Seattle, WA



**Sander Florman, MD**  
Professor of Surgery and Director  
Recanati/Miller Transplant Institute  
Mount Sinai Health System  
New York, NY



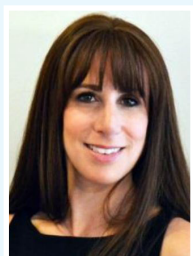
**John Levine, MD**  
Professor of Medicine, Hematology Oncology,  
and Pediatrics  
Director of BMT Research  
Icahn School of Medicine at Mount Sinai  
New York, NY



**Avital Mendelson, PhD**  
Head, Stem Cell Biology & Engineering  
Research Program  
New York Blood Center  
New York, NY



e, transparency, and scientific rigor in all CME-sponsored educational activities. All faculty audience any relevant financial relationships and to assist in resolving any conflict of interest that may discussions of unlabeled or unapproved drugs or devices. This information will be available as part of



**Suzanne Arinsburg, MD**  
Medical Director, Apheresis Unit &  
Associate Director Blood Bank and  
Transfusion Services  
Mount Sinai Hospital  
New York, NY



**Matthew W. Anderson, MD,  
PhD, FCAP**  
VP and Medical Director,  
Diagnostic Laboratories  
Associate Investigator,  
Blood Research Institute  
Versiti, WI



**Ronald Hoffman, MD**  
Professor, Hematology and Medical Oncology  
The Tisch Cancer Institute -  
Icahn School of Medicine at Mount Sinai  
New York, NY



**Luis Isola, MD**  
Director, Cancer Clinical Programs;  
Medical Director, Cancer Network;  
The Tisch Cancer Institute -  
Icahn School of Medicine at Mount Sinai  
New York, NY



**Adriana Zeevi, PhD (D)  
ABHI**  
Professor of Pathology, Surgery  
and Immunology,  
Director of Histocompatibility and  
Immunogenetics Laboratory  
University of Pittsburgh Medical Center  
Pittsburgh, PA

FRONTIERS IN ACADEMIC PATHOLOGY

Transplant and Therapeutic  
**PATHOLOGY**

Friday, January 31, 2020

New York Academy of Medicine  
1216 Fifth Avenue (at 103rd St.), New York, NY 10029

REGISTRATION FEES

- ☐ \$150 Physicians & Allied Health Professionals
- ☐ \$150 Resident /Fellow
- ☐ \*Complimentary for Mount Sinai Health System (MSHS)  
Faculty and Trainees

TWO WAYS TO REGISTER

- ☐ **Online:** <https://mssm.cloud-cme.com/pathology2020>
- ☐ **Mail** this form with your check to:  
Icahn School of Medicine at Mount Sinai  
The Page and William Black Post-Graduate School  
One Gustave L. Levy Place, Box 1193  
New York, NY 10029-6574

Enclosed is my check for \$\_\_\_\_\_ payable to  
The Page and William Black Post-Graduate School

Last Name	First Name	Degree
Address		
City	State	Zip
Phone		
Institution		
E-mail		

REFUND POLICY

All cancellations must be confirmed in writing to The Page and William Black Postgraduate School by January 24, 2020 for tuition refund. An administrative fee of \$50.00 will be retained from all registrations. No refunds will be made on cancellations after this date or for 'no shows'. The course director/department reserve the right to cancel an event. The event sponsors are not responsible for any airfare, hotel, or other costs incurred by registrants. Name changes must be done prior to the cancellation date. Name changes are not permitted after the cancellation date.

For security purposes, credit card payment cannot be accepted by mail or fax. **Register online to pay by credit card.**

For Conference Information:

Email: [cme@mssm.edu](mailto:cme@mssm.edu) or call the Office of CME at 212-731-7950



Icahn  
School of  
Medicine at  
Mount  
Sinai

Icahn School of Medicine at Mount Sinai  
The Page and William Black Post-Graduate School  
One Gustave L. Levy Place, Box 1193  
New York, NY 10029-6574

FRONTIERS IN ACADEMIC PATHOLOGY

# Transplant and Therapeutic PATHOLOGY

A One-Day Course for Pathologists and Clinicians  
Friday, January 31, 2020

<https://mssm.cloud-cme.com/pathology2020>