



# A Journey to *Uganda*

FARM RADIO INTERNATIONAL'S LEARNING TOUR

March 1 – 10, 2026



TRAVEL ARRANGEMENTS BY:



## Dear friends,

You are one of our most valued supporters, and I am so thrilled to be able to share with you the experience of seeing Farm Radio International's work first-hand. It's my pleasure to invite you to join our fourth learning tour and safari and the first since the pandemic!

Over my 19-year career at Farm Radio International, I have had the privilege of spending time with partners and colleagues in several countries of Africa. It has been amazing to witness the power that radio has to strengthen rural communities, as well as the spirit, perseverance, and ingenuity of small-scale farmers. I am committed to creating opportunities for our Canadian supporters to share a similar experience. You are one of the first to know about this exciting opportunity, and I hope you will join me on a tour of Uganda in March.



This is your chance to experience the difference that radio is making for small-scale farmers in Africa. You'll visit local radio stations to meet the people who dedicate their lives to serving farmers over the airwaves. You'll see how radio is joining forces with new and emerging digital technologies to become an interactive communications tool that gives farmers a stronger voice. And you'll meet with farmers who rely on radio every day.

You'll explore Uganda — the beautiful "Pearl of Africa" — through the eyes of Farm Radio International with other committed supporters. You'll see the cities of Entebbe and Kampala, travel to Jinja to see the source of the White Nile river, immerse yourself in the flora, fauna and wildlife of Murchison Falls and the Kibali Forest, visit our partner radio stations to see where the magic happens, sit with the members of our Community Listening Groups on their farms, tour the Janet Atkins Production Studio at KKCR Radio in Kibali, learn about Uganda's rich history and culture ... and more!

If you have always wanted to hike into the wilds to see gorillas in their home environment, you can sign up for the "Gorilla Extension" to the tour.

We'll take care of all of the details in what is sure to be the trip of a lifetime.

You know how radio can help farmers help themselves. Now you can see for yourself the power that it has to lift farming families and communities out of poverty. Seeing truly is believing.

If a grassroots trip to Africa is something you've been wanting to do for a long time, don't delay. Space in the learning tour is limited to 14. You will find more details about the trip in this brochure. If you like what you see, let us know quickly by contacting Lisa at Worldwide Quest to book directly - 1-800-387-1483 / [lisa@worldwidequest.com](mailto:lisa@worldwidequest.com).

If you have any questions, feel free to call Chantal at 1-613-762-1628.

I wish you a happy summer and hope to see you in March!

**Kevin Perkins**  
Executive Director

P.S. This trip will fill up fast, and I wanted to make sure that you heard about it first. If you're interested, please be in touch so that you don't miss out!

A handwritten signature in black ink, appearing to read "K.P.", with a stylized flourish at the end.







Lake Victoria

Known as the Pearl of Africa, Uganda is a land that offers stunning contrasts and some of Africa's most iconic landscapes and wildlife experiences. Witness the mighty Murchison Falls as the Nile River crashes through a narrow gorge, and enjoy thrilling safaris in Queen Elizabeth National Park, teeming with elephants, lions, hippos, and more. It is also a country of warm hospitality, vibrant traditions, and rich history. And, time permitting extend your stay to trek through lush rainforests in search of majestic mountain gorillas in Bwindi Impenetrable Forest.

## Our Itinerary

### Sunday, March 1: Arrive in Entebbe

You will be met on arrival at Entebbe International Airport for a group transfer to your hotel.

Remainder of the day at leisure.

*Overnight: Boma Entebbe*

### Monday, March 2: Entebbe - Kampala

Enjoy a relaxed breakfast before travelling to Kampala, the vibrant capital of Uganda. Activities include visiting the Farm Radio office in Ntinda to meet staff and advisory board members. This evening gather for a special welcome dinner.

*Overnight: Latitude 0, Kampala*

*Meals: Breakfast & Dinner*

### Tuesday, March 3: Kampala

Today you will visit Mukono (about an hour from Kampala), including the District Agricultural Extension Office. We plan on being accompanied by Radio Simba broadcasters from Kampala. Here the combination of Simba and the Mukono local government will provide an insight into two current Farm Radio projects.

*Overnight: Latitude 0, Kampala*

*Meals: Breakfast & Lunch*

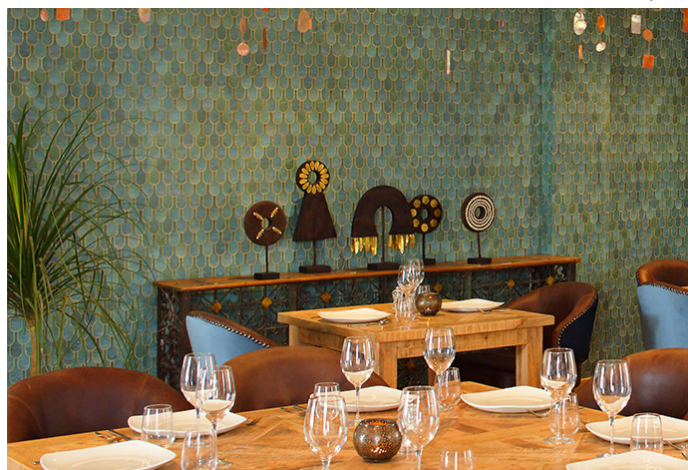
### Wednesday, March 4: Kampala

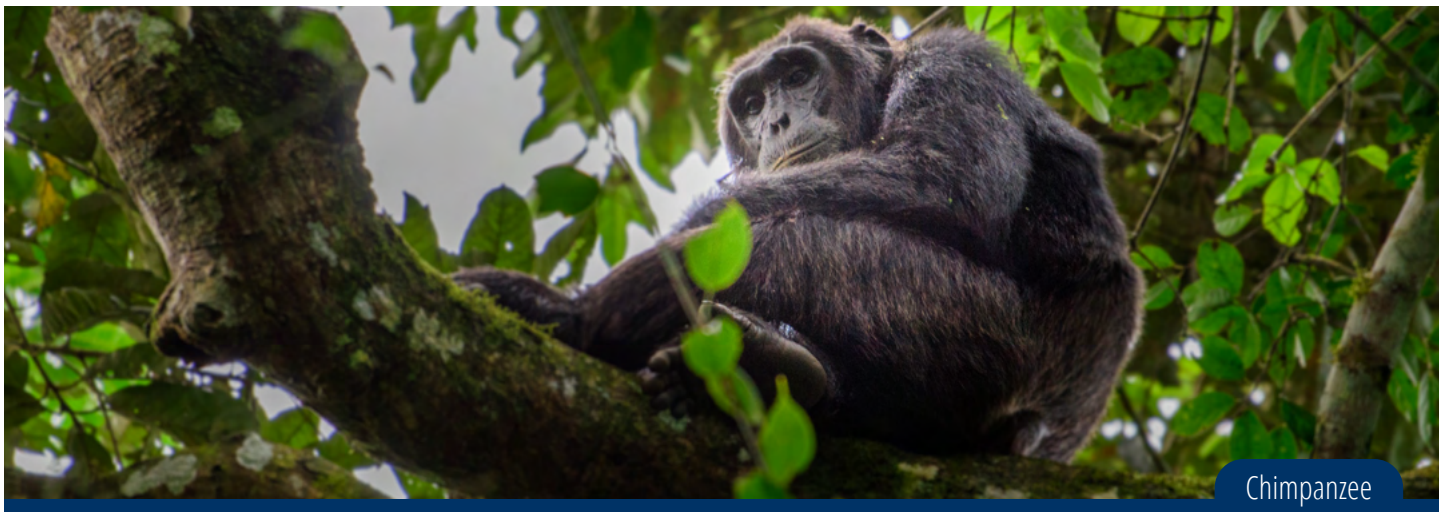
After breakfast, visit Jinja, including a stop at NBS Radio. NBS is a long-standing partner and one of our Green Leaf Platforms. In addition to meeting the district agricultural staff, we will travel to Lake Victoria and enjoy a boat trip to view the 'source of the Nile'. Other highlights include a scenic stop at Ssezibwa Falls, known for its unique rock formations, and Mabira Forest, a tropical rainforest for a chance to see various bird species.

*Overnight: Latitude 0, Kampala*

*Meals: Breakfast & Lunch*

Latitude 0, Kampala





Chimpanzee

### Thursday, March 5: Kampala – Ziwa Rhinos – Murchinson Falls

Travel to Murchinson falls and enroute visit Ziwa Rhino Sanctuary.

Murchison Falls National Park is best known as one the most powerful waterfalls in the world. Every second, the equivalent of 200 bathtubs full of water is forced through a gorge less than seven paces wide.

*Overnight: Bamboo Village*

*Meals: Breakfast, Lunch, Dinner*

### Friday, March 6: Murchinson Falls

After breakfast, visit Murchison Falls National Park, well known to be a home to over 76 mammal species including buffalos, lions, elands, antelopes, hippos, duikers, African bush elephants, leopards, chimpanzees. Next depart on a cruise to the bottom of the falls on the Nile and an opportunity to see a variety of wildlife and great views along this iconic river.

*Overnight: Bamboo Village*

*Meals: Breakfast, Lunch, Dinner*

Murchinsons Falls



### Saturday, March 7: Murchinson Falls – Hoima

In the morning, visit the top of the falls known for great views and an iconic spot for scenic pictures. Admire the permanent rainbow: a rewarding view which explains why Murchison Falls features on many travellers' bucket lists. Later, enroute to Hoima, stop at the Farm Radio projects at Masindi. The focus of our visit will be a farmer's listening group.

The end of the day brings us to Hoima, the second capital of Uganda.

*Overnight: Kikonka Lodge*

*Meals: Breakfast, Lunch, Dinner*

### Sunday, March 8: Hoima – Kibale

After breakfast visit the Kagadi Kibale Community Radio and the dynamic NGO that runs the station. This is also the site of the Janet Atkins Memorial Studio. On the air 365 days a year, 16 hours per day, KKCR broadcasts thousands of programs each year, reaching a listenership of four million people in a 100-mile radius around the town of Kagadi in Uganda's Western Region. Later, travel to Kibale.

*Overnight: Kibale Forest Camp, Safari Tents.*

*Meals: Breakfast, Lunch, Dinner*

### Monday, March 9: Kibale – Entebbe

Today you will travel back to Entebbe for the end of your tour.

This evening we will gather for a special farewell dinner.

*Overnight: Boma Entebbe*

*Meals: Breakfast & Dinner*

### Tuesday, March 10: Depart Entebbe

Transfer to the airport for your flight home.

*Meals: Breakfast*





African Elephants

## Gorilla Extension

March 10 – 15, 2026

Join us for a life-changing journey deep into the ancient rainforests of Uganda, where the mystical mist reveals one of nature's most awe-inspiring creatures — the mountain gorilla. The tour takes you to Bwindi Impenetrable National Park, home to nearly half of the world's remaining mountain gorillas. Another highlight is our stay at Queen Elizabeth National Park where a classic safari takes you through the park's major highlights, including game drives on the Kasenyi Plains, and a boat cruise on the Kazinga Channel offering some of the best close-up wildlife viewing in East Africa.



Mwesa Safari Lodge

## Extension Itinerary

### Tuesday, March 10: Fly to Queen Elizabeth N.P.

Fly Entebbe to Queen Elizabeth National Park – Depart Entebbe 10:15 / Arrive Mwesa Airstrip 12:05

*\*This flight will be arranged by our local office. Timings subject to change.*

Today you will travel to Queen Elizabeth N.P. This part of the safari is all contained within the Tooro Kingdom, and we will notice a distinct change in the scenery as the lush green crater lake region of the surrounding Kibale Forest gives way to the open savannah land of Queen Elizabeth National Park.

*Overnight: Mwesa Safari Lodge*

*Meals: Breakfast, Lunch, Dinner*

### Wednesday, March 11: Queen Elizabeth N.P

A game drive in Kasenyi sector of Queen Elizabeth National Park is a great place to see the differing landscapes and ecosystems in Uganda. This park is the oldest and most visited in Uganda. This game drive will take place on the Kasenyi Plains which are in the northeast section of the park. There will be large numbers of antelopes, buffalo, elephant, warthogs, baboons as well as lions and the odd leopard if we are lucky. One of the highlights of visiting Queen Elizabeth National Park is the boat ride along the Kazinga Channel. The boat trip is a round trip beginning at the Mwesa Peninsula and lasts around 3 hours.

*Overnight: Mwesa Safari Lodge*

*Meals: Breakfast, Lunch, Dinner*

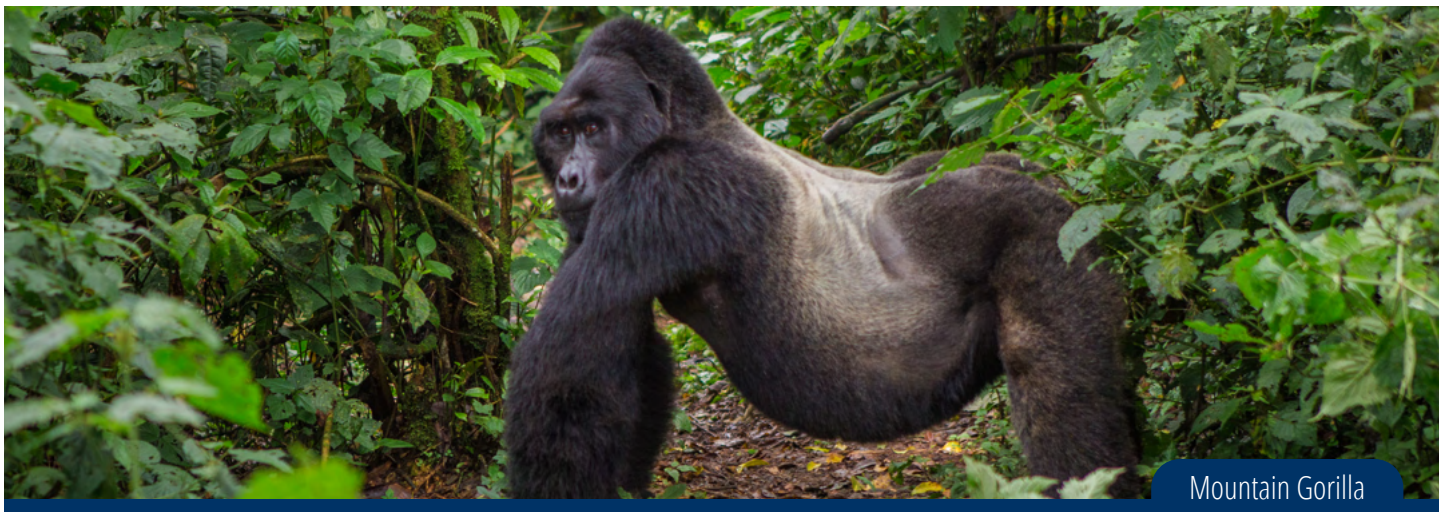
### Thursday, March 12: Queen Elizabeth N.P. to Bwindi N.P.

We will head south towards Bwindi and the Gorillas. The southern sector of the park is called the Ishasha Sector, and it is famous for fig tree climbing lions that inhabit this area. We will stop to visit Ride 4, a women's NGO that has 300 women members and empowers women by teaching them skills that they can use to earn a living. We will learn how to weave a simple basket, cook a traditional meal, or how to dig using a hoe.

*Overnight: Kaara Gorilla Mountain Lodge*

*Meals: Breakfast, Packed Lunch, Dinner*





Mountain Gorilla

### Friday, March 13: Bwindi N.P

Another amazing and unforgettable day ahead. An early start will have us transferring to the Park Headquarters for a briefing with the Uganda Wildlife Authority guides. An advance party of guides will have gone ahead into the forest to locate where the gorillas slept the previous night and will begin to track their movements. For conservation purposes, time allowed with the Gorillas is one hour. There are a multitude of other animals that we might encounter including antelopes and rare monkeys not to mention the beauty of the forest itself.

*Overnight: Kaara Gorilla Mountain Lodge*

*Meals: Breakfast, Packed Lunch, Dinner*

### Saturday, March 14, 2026: Fly Bwindi N.P.to Entebbe.

Fly Kihikihi Airstrip to Entebbe: Depart Kihikihi Airstrip 08:45 / Arrive Entebbe 11:25

*\*This flight will be arranged by our local office. Timings subject to change.*

Fly to Entebbe and on arrival transfer to our hotel.

This evening gather for a special Farewell dinner

*Overnight: Karibu Guest House, Entebbe*

*Meals: Breakfast & Dinner*

### Sunday, March 15: Depart Entebbe

Today you will be transferred to the airport for your flight home.

*Overnight: Entebbe*

*Meals: Breakfast*

*Note: The itinerary and accommodation described in this tour brochure are subject to change due to logistical arrangements and to take advantage of local events.*

### Gorilla Extension Tour Cost

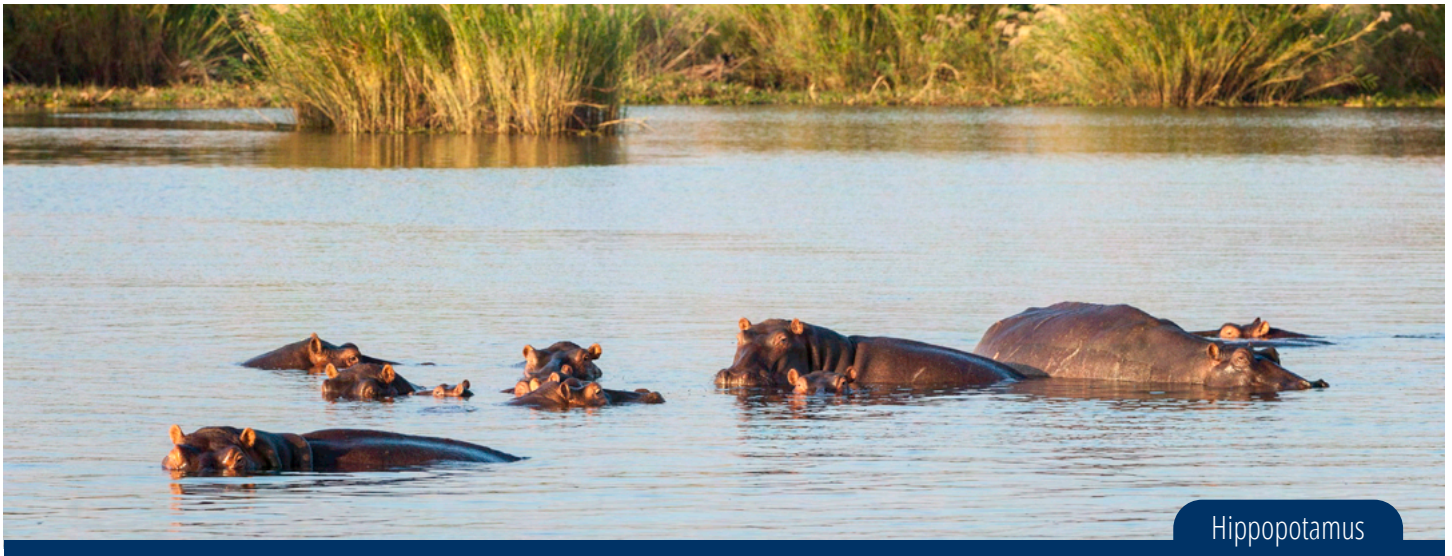
**Tour Costs:** US\$4995 (Includes US\$750 Gorilla Permit)

*Based on Minimum 4 – Maximum 6 people*

Single Supplement (subject to availability): US\$350



Bwindi Impenetrable National Park



Hippopotamus

## TOUR DETAILS

### Tour Cost (per person): US\$4295

Based on a minimum of 10 / maximum of 14 participants  
Plus US\$1000 tax creditable donation to Farm Radio International

Single Supplement: US\$895

*If you are travelling alone and you are willing to share, we will attempt to match you up with an appropriate roommate. If we cannot, the single supplement will apply. This will be collected at 90 days prior to departure. Note: limited single rooms are available.*

**Group Size:** 10 – 14 participants

### What's Included:

- Accommodation based on double occupancy in hotels listed or similar
- Meals as indicated in the itinerary
- Bottled water in vehicles
- Excursions as indicated in the itinerary
- Transportation by Extended Landcruiser with pop-up roof
- Accompanied by qualified bilingual local English-speaking driver/guide
- All park fees and entrance fees to sites visited with your guide
- Gratuities.
- Services of our local office
- Tour accompanied by Kevin Perkins, Executive Director Farm Radio International

### Not Included:

- Roundtrip international airfare from your home city
- Meals other than those mentioned in the itinerary
- Fuel surcharges, if applicable
- Visa fee US\$111(subject to change)
- Travel insurance
- Excess baggage charges
- Items of a personal nature
- Additional arrangements required due to any emergency or other situation

### Payment Details:

A non-refundable deposit of US\$1000 per person is required to confirm your spot on this tour. A second non-refundable deposit of US\$2500 per person is required 6 months prior to departure. Final payment is due 90 days prior to departure.

## How to Book

**Please call Lisa at Worldwide Quest with any questions and to secure your booking:**

**Toll-free 1-800-387-1483 / Local 416-633-5666**  
**[lisa@worldwidequest.com](mailto:lisa@worldwidequest.com)**



TICO#: 2667946

## WHAT TO EXPECT

---

### Joining Instructions

*Arrival: Sunday, March 1*

This tour begins at Entebbe International Airport (EBB). Travellers arriving on the tour start date will be met on arrival and transferred to our meeting point. This transfer is included in the cost of the tour. When you book the designated pre-trip accommodation with Worldwide Quest, your transfer from the airport to our group hotel on arrival is also included. If you are making your own pre-trip arrangements, this transfer can be provided at additional cost.

*Departure: Friday, March 10*

The tour concludes with a transfer to Entebbe International Airport (EBB). Please contact us to verify timing of this transfer prior to making any flight arrangements.

### Level of Activity: Moderate to Active

You should be in good health and able to walk unassisted for up to three hours at a time on terrain that is often uneven.

**\*\***The Gorilla trekking involves walking through forested hills, including dense jungle and thickets of bamboo. If you have any questions about your ability to take part in this tour, please give us a call..

### Accommodation

We are staying in comfortable hotels and lodges. All rooms have private facilities. Please note that the standard of the accommodations in some instances is basic and not always comparable with that of North America.

### Transportation

We are travelling in special Extended Toyota Landcruiser safari vehicles driven by a professional Driver-Guide.

### Weather

Uganda has a warm tropical climate with temperatures ranging from 25 – 29 °C apart from the mountainous areas, which are cooler by as much as 7 or 8 °C. There is often a light drizzle in highland areas. Rain can also be expected on some days in more lowland areas.

### Travel Documents

You will require a passport for this trip. Please ensure it is valid for at least 6 months beyond your scheduled return home. Canadian passport holders require a tourist visa to visit Uganda. As of April 2025, the cost of the visa is US\$111 (subject to change). Detailed instructions will be provided at 90 days prior to departure.

## ADDITIONAL INFO

---

### Terms and Conditions

For additional information about our terms and conditions, please refer to your booking form, the current brochure or our website. All participants booking with Worldwide Quest are covered by the terms of the Ontario Travel Industry Act (Worldwide Quest International, Ontario - License # 2667946). See full details [here](#).

### Cancellation Policy

All payments are non-refundable, however you may transfer your initial deposit for any land tour to another tour 90 days or more prior to your scheduled departure date. Initial deposits for cruises are non-refundable and non-transferable. Your second payment and your final payment are non-refundable and non-transferable. If you cancel within 90 days prior to trip departure, all associated trip costs are non-refundable. In the event of a cancellation, you must notify Worldwide Quest immediately and in writing. See full details [here](#).

### Travel Insurance

We urge you to ensure that you have adequate cancellation and medical insurance in place, should an unexpected event cause you to cancel or interrupt your trip or should the tour not be operable per our terms and conditions. We will offer you Manulife insurance coverage. Medical insurance including emergency medical evacuation coverage is mandatory on all our tours.