

2020 City of Lakeville
Parks Dept. Update/Improvement Projects
Good Morning Lakeville
April 29, 2020



Signage in Parks for COVID-19 Response



Signs have been placed at various high-usage parks, trails and open spaces throughout the community reminding park goers to practice proper social distancing.

PARK ENTRANCE DRIVE
-SEE SHEET 127 FOR LAYOUT ENLARGEMENT

W.B. CSAH 50
E.B. CSAH 50

PARKING AREA 1
36 STALLS
(2 ACCESSIBLE)

FIELD #1
U9 (2)
(180 X 405)

FIELD #2
U9 (2) or U11
(165 X 270)

FIELD #3
U9 (2) or U11
(165 X 270)

EXISTING BALL FIELD

PARKING AREA 2
88 STALLS
(3 ACCESSIBLE)

EXISTING BALL FIELD

PARKING AREA 3
121 STALLS
(5 ACCESSIBLE)

FIELD #4
U13
(360 X 180)

EXISTING BALL FIELD

STORAGE BUILDING WITH CONCRETE SLAB
- REFER TO SPECIFICATIONS FOR ADDITIONAL INFORMATION AND REQUIREMENTS - VERIFY LOCATION WITH OWNER

EXISTING BALL FIELD

PARKING AREA 4
- SEE SHEET 129 FOR LAYOUT ENLARGEMENT

EXISTING BALL FIELD

PARKING AREA 5
- SEE SHEET 129 FOR LAYOUT ENLARGEMENT

EXISTING BALL FIELD

EXISTING BALL FIELD

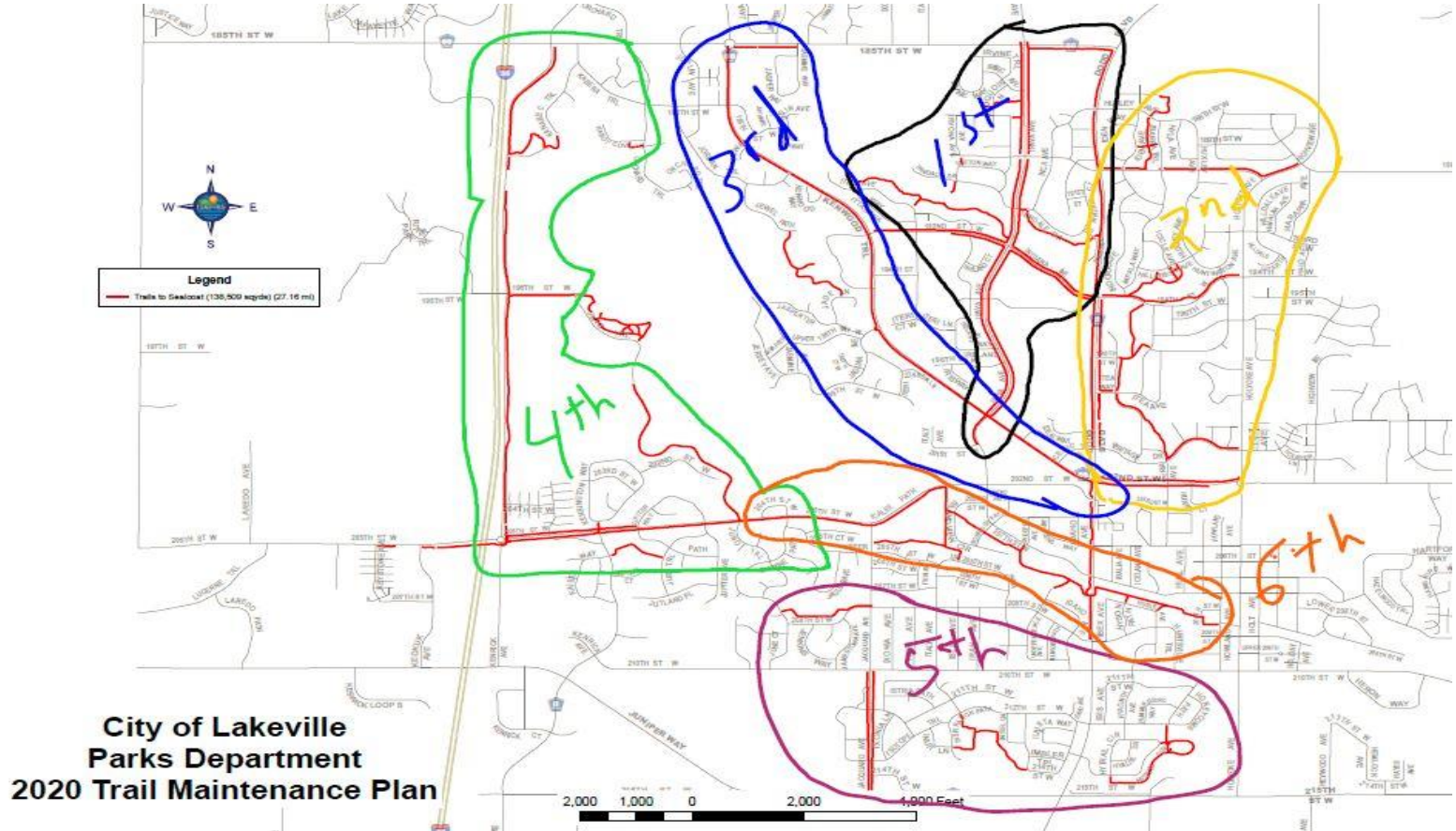
EXISTING BALL FIELD

NORTH PARKING AREAS
225 PAVED PARKING STALLS (10 ACCESSIBLE)

SOUTH PARKING AREAS
166 STALLS

291 TOTAL STALLS

Trail Maintenance



Projects

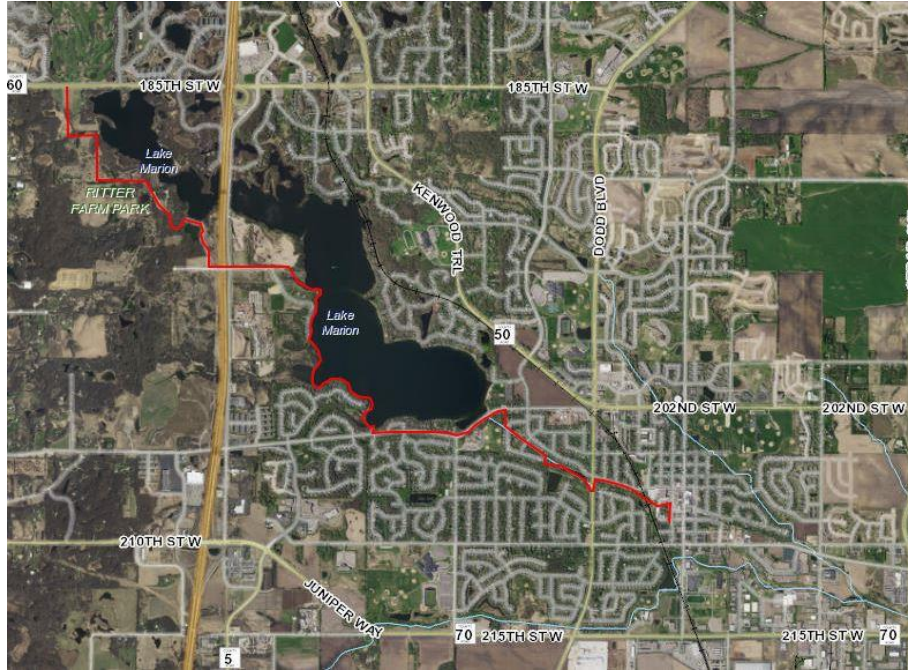


King Park 9 Hole Handicapped
Accessible/All Inclusive Mini Golf Course

West Lake Marion Off Road Bike Course Skills Area and Improvements



Projects



Lake Marion Greenway/Ritter
Farm Trailhead Feasibility Study

Parking Lot Improvements Aronson,
Quigley-Sime and Dodd Trail



Improvements

- Orchard Lake Beach Restroom Improvements
- Draintile installation fields 8 & 9 at Steve Michaud Park
- Trail Reconstruction: North and south side of 170th St. between Flagstaff and Pilot Knob Road
- Trail crack and fog sealing
- Trail Lighting Installation – Chadwick and Stoneborough Parks
- Basketball and tennis court resurfacing
- Quigley-Sime backstop replacement and King Park safety fencing
- Field Improvements/maintenance
- Park ID Sign Replacements

Possible Bond Referendum Projects

Antlers Park Improvements	\$8,820,000
Avonlea Community Park	\$13,781,250
Casperson Bandshell/Performance Stage	\$752,456
East Community Park Phase II	\$2,412,780
Ritter Farm Park Cabin Improvements	\$578,813
Ames Arena Improvements	\$8,500,000
Estimated Cost	\$35,195,299

Any Questions?

