

State of the Business Community

Lakeville Area Chamber of Commerce

March 20, 2019



Lakeville, Minnesota—Positioned to Thrive

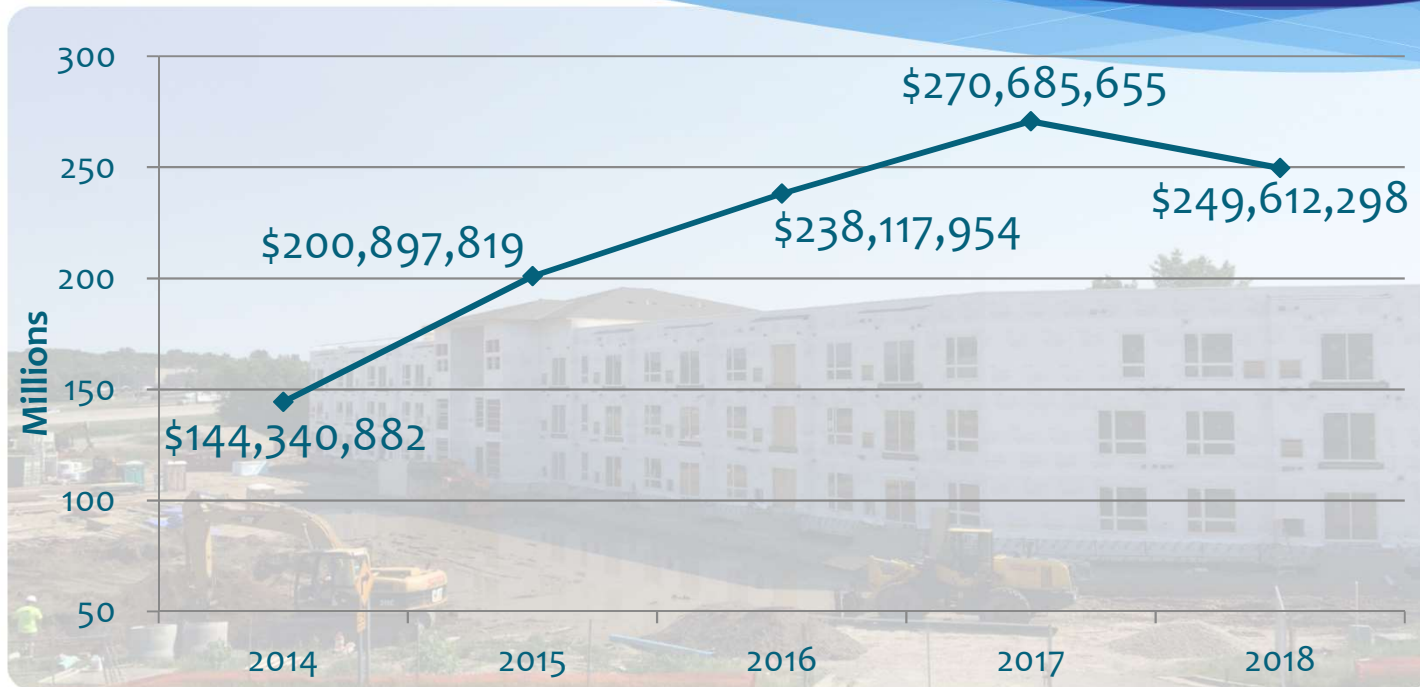
Business Developments



Lakeville, Minnesota—Positioned to Thrive



Total Building Permit Valuation



Lakeville, Minnesota—Positioned to Thrive



Top Commercial & Industrial Permit Valuations

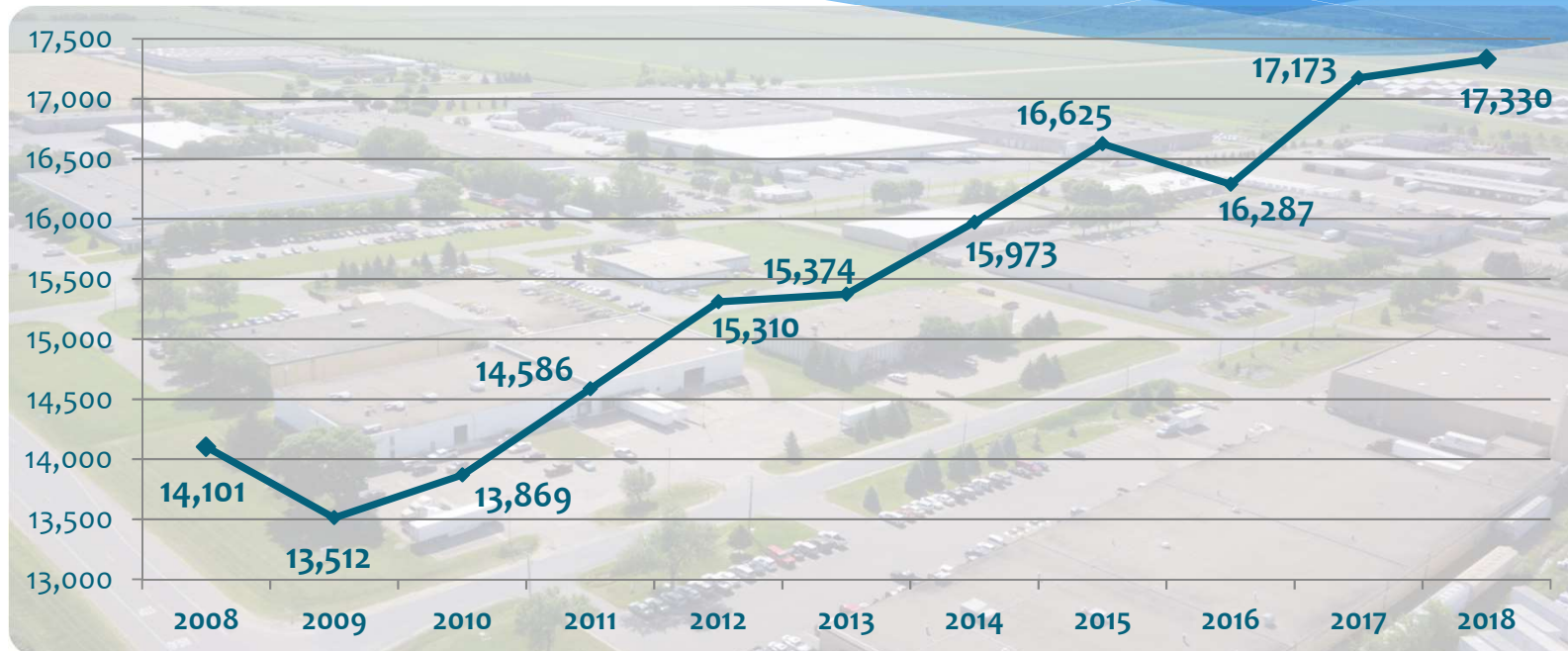
Hampton Inn & Suites	\$ 7,000,000
Schneiderman's Distribution Center	\$ 5,100,000
Compeer Financial	\$ 4,700,000
Lee Lake Storage	\$ 4,203,000
Wings Financial Credit Union	\$ 2,700,000
ALDI	\$ 2,100,000
HomeGoods	\$ 1,373,000
HOBO Incorporated	\$ 1,205,000
O'Reilly Auto Parts	\$ 932,000
Advanced Oral Surgery	\$ 850,000
YMCA Early Childhood Learning	\$ 800,000
Valvoline Instant Oil Change	\$ 800,000



Lakeville, Minnesota—Positioned to Thrive

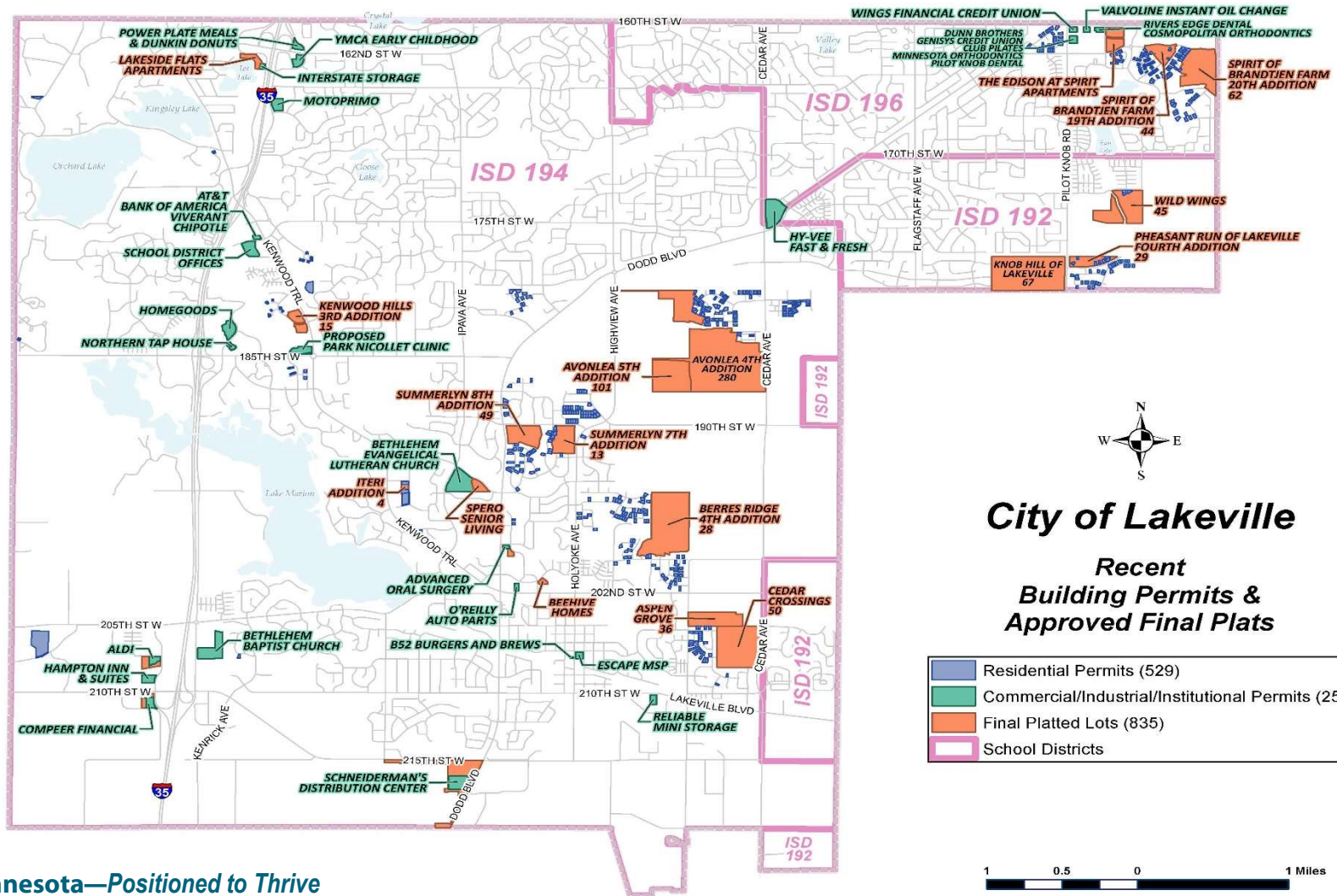


Lakeville Business Employment



Source: Minnesota Department of Employment and Economic Development,
Quarterly Census of Employment and Wages. Data from Q2 of each year.

Lakeville, Minnesota—Positioned to Thrive



Lakeville, Minnesota—Positioned to Thrive

9:\Projects\2019\Community Development\Map and Home & Garden Permits.mxd

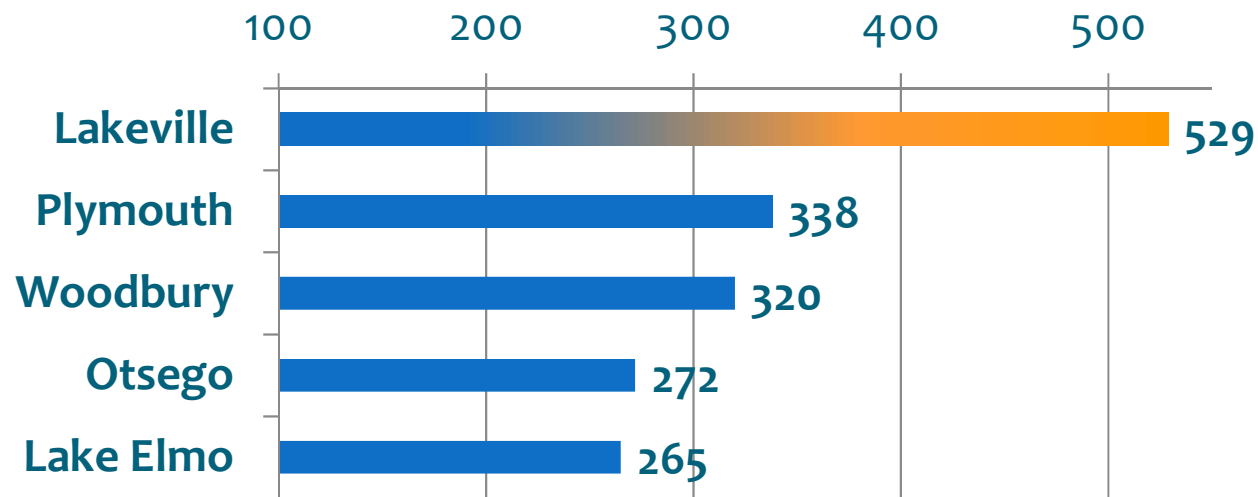
Printed: 3/7/2019



2018 Residential Permits

Twin Cities

Residential Permits



BATC-MHF December 2018

Lakeville, Minnesota—Positioned to Thrive



2018 Ribbon Cutting & Groundbreaking Events



- 24 Ribbon Cuttings
 - 8 Commercial/Retail
 - 3 Restaurant
 - 9 Medical/Office
 - 2 Housing
 - 2 Childcare/Church
- 3 Groundbreakings
 - 2 Housing
 - 1 Industrial



Lakeville, Minnesota—Positioned to Thrive



Recent Permits Issued

- Northern Tap House (new restaurant in former Applebee's)
- Power Plate Meals (interior finish next to Kenrick Liquor Store)
- Hy-Vee Fast & Fresh (new convenience store on Dodd Blvd/Glacier Way)
- Mi5 Crossfit (new location in Juniper Commerce Center)
- B52 Burgers and Brews (new restaurant in former Erickson Drug)



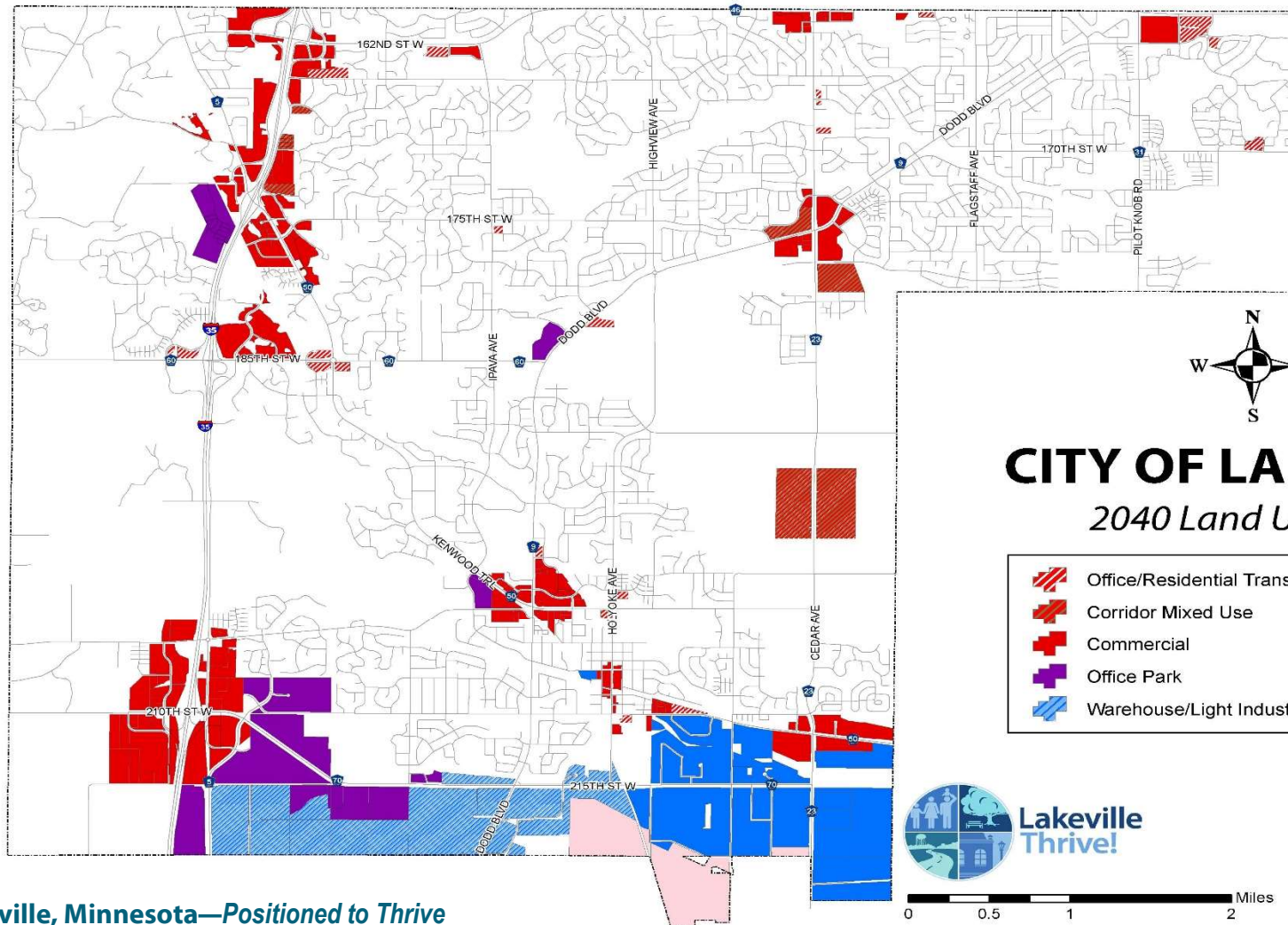


2019 Projects

- ALDI
- Compeer Financial
- Lakeside Flats Apartments
- Hampton Inn & Suites
- Wings Financial Credit Union
- Schneiderman's Distribution Center
- QA1 Precision Products Inc.
- Edison at Spirit of Brandtjen Farm
- Park Nicollet Clinic
- Medical Office Building by Hy-Vee Fast & Fresh



Lakeville, Minnesota—Positioned to Thrive



CITY OF LAKEVILLE

2040 Land Use Plan

- Office/Residential Transition
- Corridor Mixed Use
- Commercial
- Office Park
- Warehouse/Light Industrial
- Airport
- Industrial



Lakeville
Thrive!



Source: City of Lakeville
Date: 12/31/2018

Lakeville, Minnesota—Positioned to Thrive



Spirit of Brandtjen Farm Commercial



Lakeville, Minnesota—Positioned to Thrive



Community Partnerships

- Lakeville Area Chamber of Commerce
- Dakota County
- Metropolitan Council
- DARTS
- MN DEED
- Metropolitan Airports Commission
- ISD 194



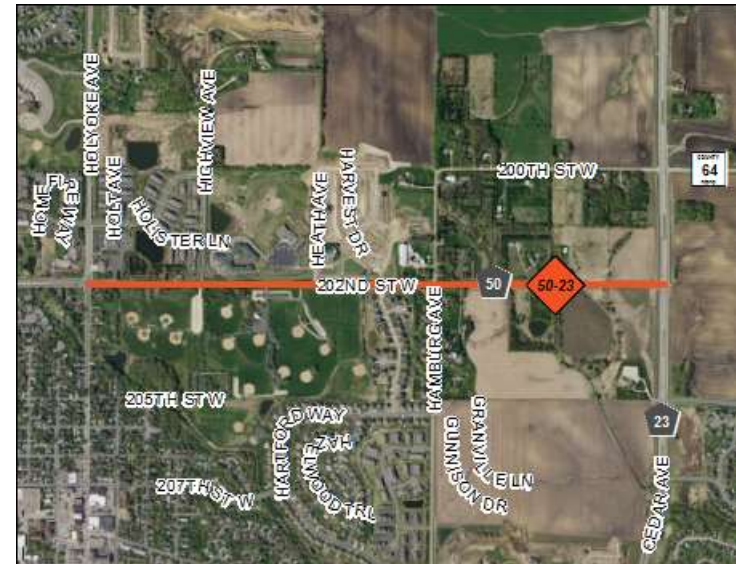
Lakeville, Minnesota—*Positioned to Thrive*



2019 County Road 50 Reconstruction

- **Project timeline:** 2019
- Construction expected to start in the spring
- Divided 2-lane roadway with trails
- CSAH 50 (202nd Street) closed from Holyoke Ave to Cedar Ave
- Multi-lane roundabout at Holyoke Ave and 202nd St
- Traffic signal at 202nd St and Cedar Ave

<https://www.co.dakota.mn.us/Transportation/PlannedConstruction/CR50Lakeville>





- www.highway70expansionproject.com





Looking Ahead

- 2040 Comprehensive Plan implementation
- 2020 Economic Development Strategic Plan
- Public Safety Improvements
- 2020 Budget & Capital Improvement Plan
- State of the City address



Questions?

Mayor Douglas Anderson
danderson@lakevillemn.gov



David Olson,
Community & Economic
Development Director
dolson@lakevillemn.gov