



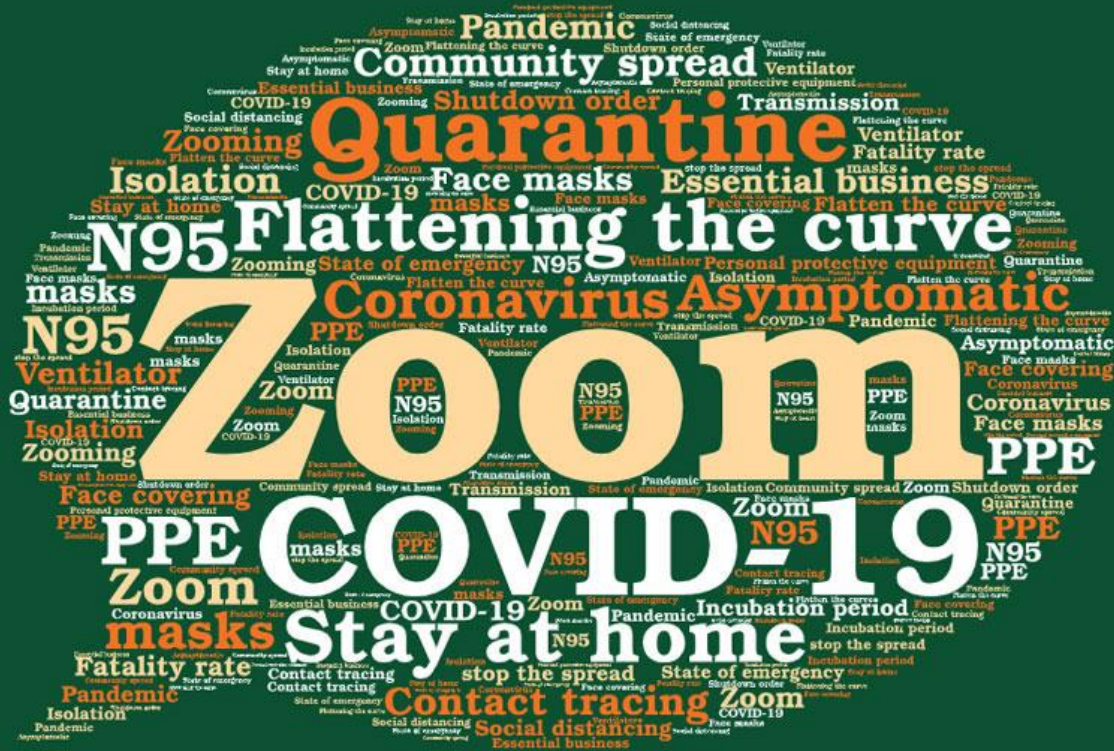
VILLAGE OF GLEN ELLYN

STATE OF THE VILLAGE

January 2021

VILLAGE OF

ILLINOIS



535 DUANE STREET • GLEN ELLYN, IL 60137

630.469.5000 • WWW.GLENELLYN.ORG



2020 *A Look Back*

BUSINESSES CLOSED: 8

NEW BUSINESS OPENINGS IN GLEN ELLYN

1. **Cilantro Taco Grill** (587 Roosevelt Road)
2. **Apolis Greek Street Food** (430 Roosevelt Road)
3. **Sweet Basil Café 549** (Roosevelt Road)
4. **Good Roots** (492 Crescent Blvd)
5. **Wing Stop 661** (Roosevelt Road)
6. **The Gallery** (528 Duane St) *expansion/relocation*





A Look Ahead

NEW BUSINESSES OPENING IN GLEN ELLYN IN 2021

- 1. Bubble Tea (507 Pennsylvania)**
- 2. ko-ze wine bar (484 N Main St)**
- 3. Beaudee Spa 866 (Roosevelt Rd)**
- 4. Beer Cellar Expansion (488 Crescent Blvd)**



MEASURES THE VILLAGE INSTITUTED TO HELP BUSINESSES NAVIGATE 2020

- ✓ Waived Business Registration Fees for 2020
- ✓ Reduced downtown employee parking fees
- ✓ Reduced liquor license fees
- ✓ Adjusted parking regulations in the downtown to accommodate the evolving parking needs
- ✓ Expanded outdoor dining opportunities
- ✓ Expanded outdoor merchandising opportunities
- ✓ Continued marketing and promotion of Glen Ellyn businesses in partnership with the Glen Ellyn Chamber of Commerce and the Alliance of Downtown Glen Ellyn

AWARD PROGRAMS: MATCHING FUNDS INCREASED



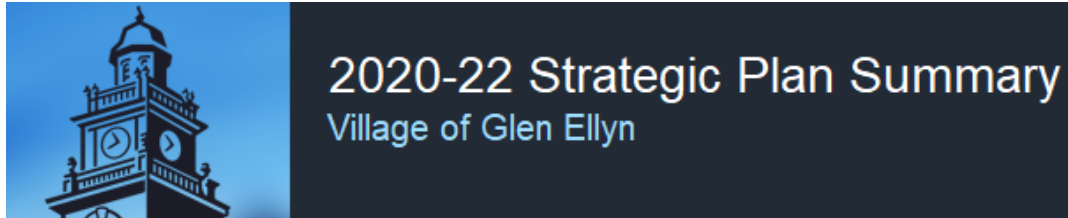
- ✓ In September 2020, the Board voted to double the matching funds for two awards
- ✓ Increased funding for both the Downtown Retail Interior Improvement Award and the Façade Improvement Award to \$30,000 per award
- ✓ Available for new or expanding businesses
- ✓ Awards totaled \$203,500 in 2020

COVID-19 BUSINESS SUPPORT GRANT PROGRAM

- ✓ In September 2020, the Board also approved the creation of the Glen Ellyn COVID-19 Support Grant Program
- ✓ Assist businesses with costs associated with COVID-19 business expenses (i.e. signage, safety partitions, website upgrades, outdoor dining including furniture, tents, etc.)
- ✓ Program funded with the Village's allocation of CARES funding from DuPage County
- ✓ COVID grants awarded to date to support existing businesses through the pandemic **total \$107,255**

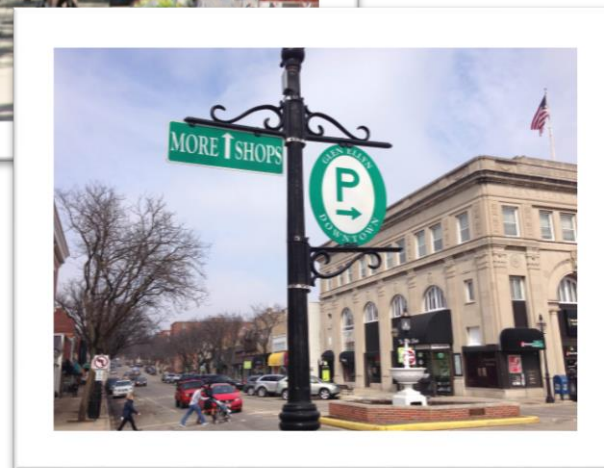


STRATEGIC PLAN



- ✓ Last year, the Board approved the 2020-2022 Strategic Plan
- ✓ The strategic planning process was facilitated by an outside consultant and consisted of a number of planning sessions with the Board and the Village's management team.
- ✓ Provides a clear vision for the community over the next several years.
- ✓ Includes 5 Strategic Priorities, including: Financial Sustainability, Development, Effective Governance, Workforce & Operations and Infrastructure.

DOWNTOWN COMMERCIAL DISTRICT



AVERE ON DUANE – ACROSS FROM LIBRARY



- Luxury Rental Development-48 Units
- Plan Commission unanimously approved; Village Board approved in July 2019.
- Construction began in Fall 2019 and is nearing completion (February 2021).

APEX 400

- \$28.5 million private investment into the downtown.
 - In July 2020, DuPage Co. Circuit Court ruled in favor of Village & Developer
 - Construction Commenced in September 2020.
 - Mixed-use building including:
 - 8,844 sq. feet commercial space for 2 restaurants
 - 107 luxury apartment units
- 2 story parking garage (new customer parking garage expected to partially open summer 2021).
- Development expected to be complete in Spring 2022.



GLENWOOD STATION – FORMER MCCHESENEY SITE

- Development includes 86 apartment units; 1,490 square-feet of commercial space; and at least 102 parking stalls within an enclosed two-tier parking garage.
- Plan Commission approved; Village Board unanimously approved in December 2020.
- \$28.5 million private investment into the downtown.
- Board also approved a redevelopment agreement with the Developer.
- Demolition expected to begin November 2021 with construction to start in Spring 2022. Anticipated to be complete by December 2023.



VILLAGE OF *Glen Ellyn* ILLINOIS

VILLAGE CAPITAL PROJECTS



535 DUANE STREET • GLEN ELLYN, IL 60137



630.469.5000 • WWW.GLENELLYN.ORG

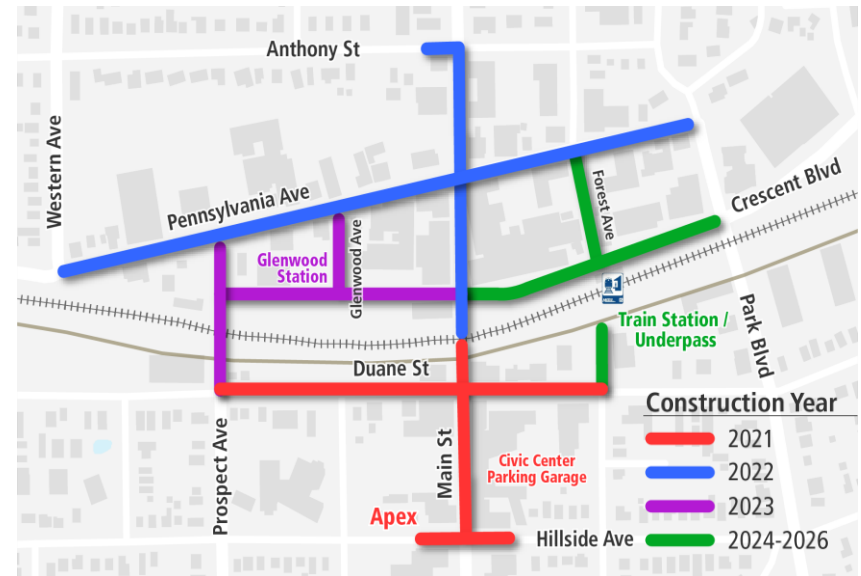
CIVIC CENTER PARKING GARAGE

- In early May, demolition took place on the former Shonkwiler building & adjoining building to the east to allow for creation of a pedestrian connection to Main Street.
- Parking Garage construction began in June 2020.
- On track for completion by May 1, 2021.
- Approx. 287 parking spaces (277 stalls within the five tiers of parking and row of 10 surface parking stalls along west side of drive). Net gain of 212.
- Will serve Metra commuters, customers, business employees, residents, as well as Civic Center employees.
- Public Pedway and Plaza and “campus” improvements for maximum accessibility
- \$17.5M investment

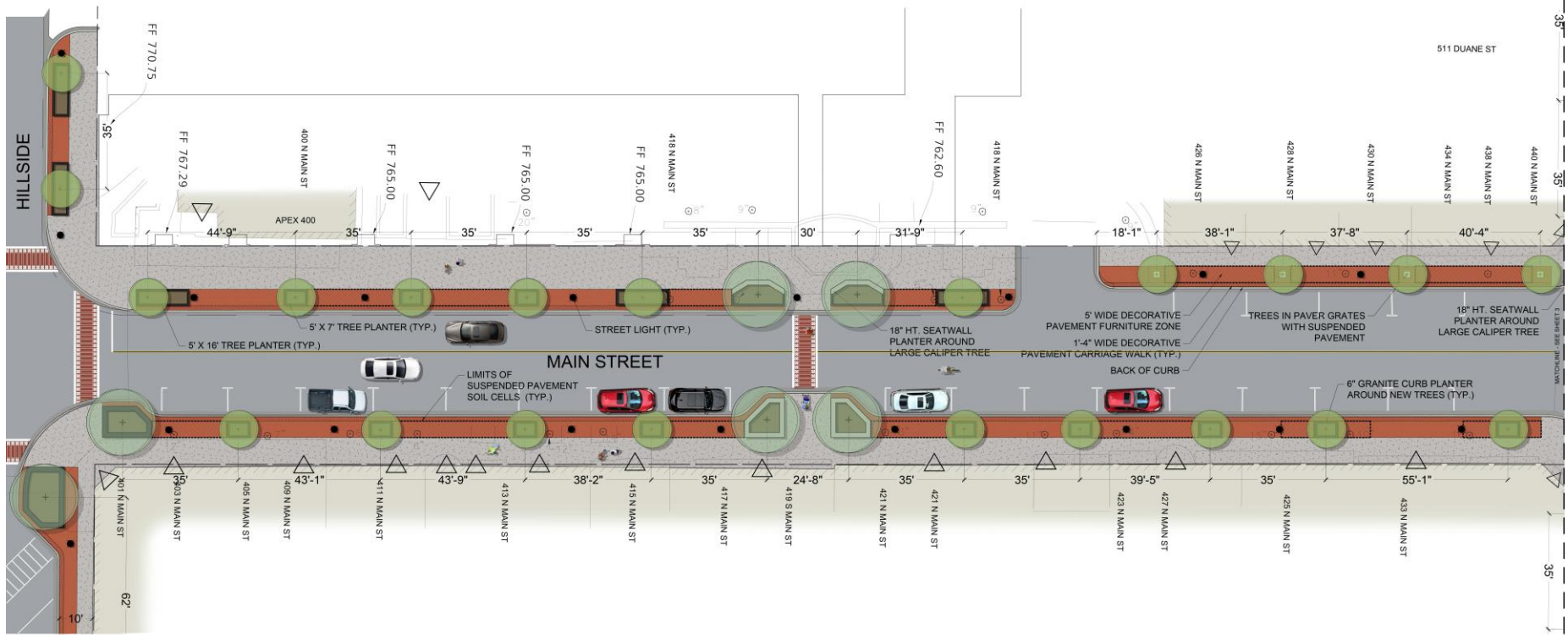


CBD – STREETSCAPE & UTILITY IMPROVEMENTS

- Embarking on streetscape and utility project to repair aging infrastructure (water/sanitary/storm sewers=100+ year old system) and upgrade the appearance of the downtown.
- Project projected to cost \$27.8 million. 19% of the total cost is streetscape upgrades.
- Village considering beginning construction in a phased approach in the spring of 2021.



Project Website: www.downtownge.com



LEGEND

	EXISTING TREE TO REMAIN
	PROPOSED TREE
	CONCRETE SIDEWALK
	DECORATIVE PAVING
	LIMITS OF SUSPENDED PAVEMENT SOIL CELLS
	STREET LIGHT
	BUILDING RETAIL/RESTAURANT ENTRANCE

MAIN STREET DUANE TO HILLSIDE

GLEN ELLYN CBD STREETScape DRAFT CONCEPT PLAN



Nov 30, 2020
Sheet 4 of 18



Site Plan: Main Street South (Duane to Hillside)



VILLAGE OF *Glen Ellyn* ILLINOIS

CBD – STREETScape & UTILITY IMPROVEMENTS



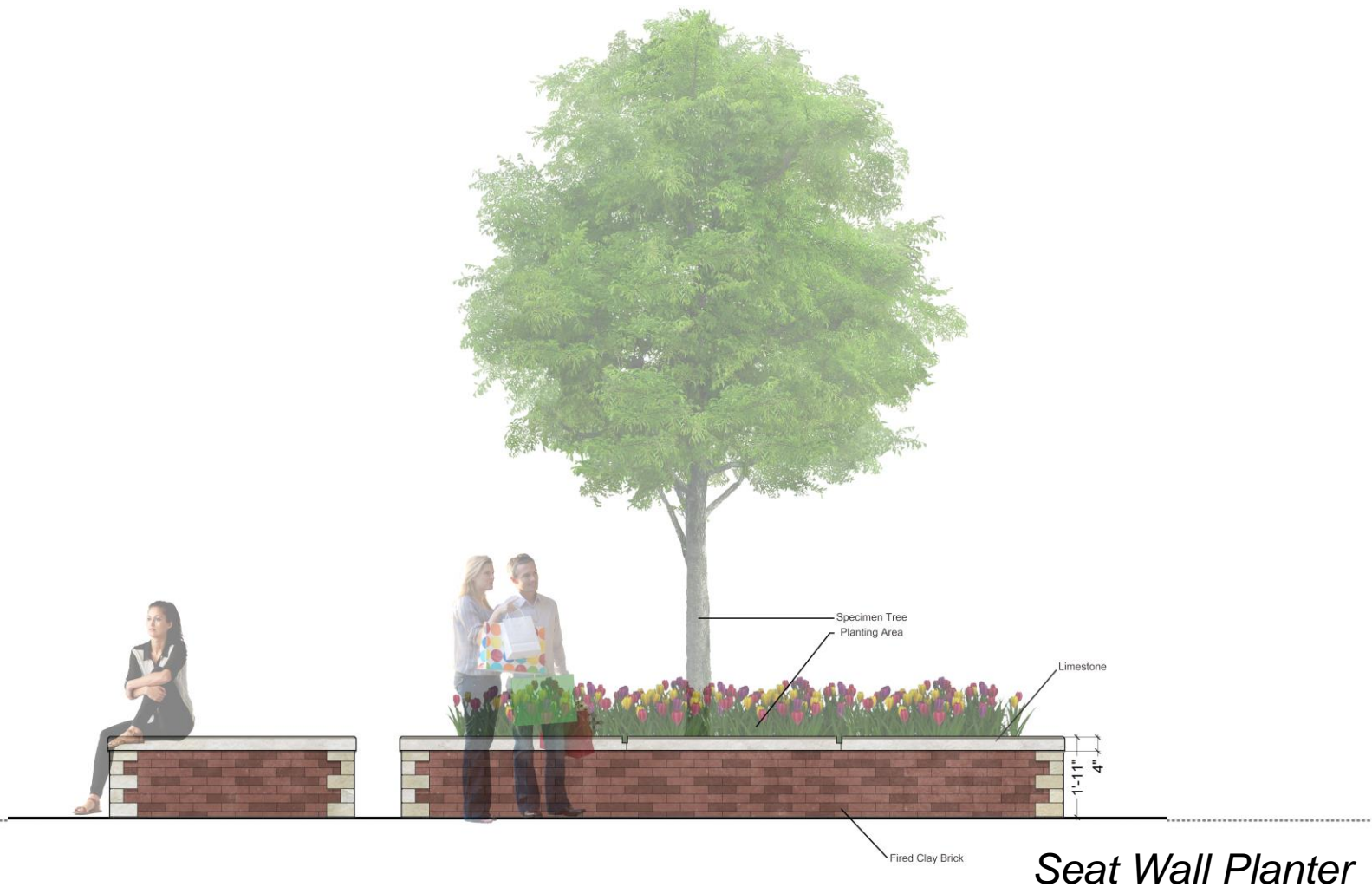
Duane and Main: Mid-block Crossing

535 DUANE STREET • GLEN ELLYN, IL 60137



630.469.5000 • WWW.GLENELLYN.ORG

CBD – STREETScape & UTILITY IMPROVEMENTS



CBD – STREETScape & UTILITY IMPROVEMENTS



*Mock-up:
Brick/
Concrete
Planter*

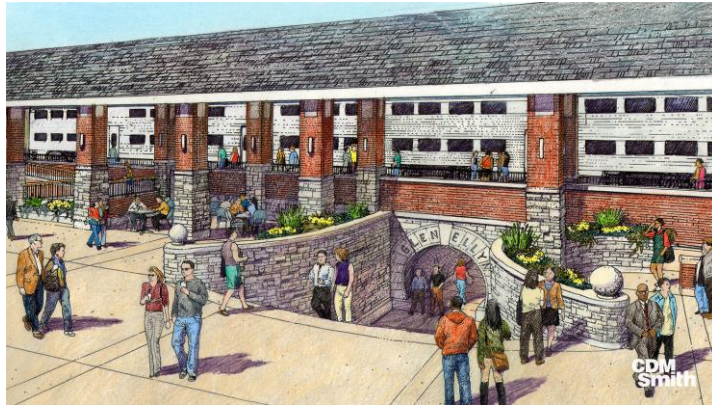
PROVIDING INPUT ON MATERIALS

- Several sidewalk, parkway and tree planter curb material options were installed in October 2020 at the northwest intersection of Main and Crescent.
- Village is asking for feedback from business owners, residents and visitors. Over 300 people have shared their input.
- View the options and then vote for your preferred sidewalk, parkway and tree planter curb materials at downtownge.com



Survey closes TODAY at 5 p.m.

CBD – TRAIN STATION/PEDESTRIAN UNDERPASS



- Includes completely new train station and pedestrian underpass tunnel
- Various site improvements including enhanced drop-off and pick-up areas and plaza
- Village received \$14.4M federal grant plus \$4M earmarked from Metra and \$2M ICC grant
- Construction start: late 2023/early 2024 with construction completion anticipated for end of 2025.

VILLAGE OF GLEN ELLYN

MAJOR PUBLIC + PRIVATE PROJECTS

\$60 Million Public Investment

\$90 Million Private Investment



Tentative Schedule:



Avere on Duane

Construction Underway

Construction Completion:
February 2021



Civic Center Parking Garage

Construction Underway

Construction Completion:
May 1, 2021



Apex 400

Construction Underway

Construction Completion:
Spring 2022



CBD Streetscape & Utility

Construction Start: Spring 2021

Construction Completion:
End of 2025



Glenwood Station

Construction Start: Spring 2022

Construction Completion:
December 2023



Train Station + Pedestrian Underpass

Construction Start: End 2023/
Early 2024

Construction Completion:
End of 2025

UPCOMING INITIATIVES, EVENTS AND DECISIONS



COMPREHENSIVE PLAN

- Glen Ellyn's existing plan was adopted in 2001.
- The new plan will act as a blueprint for the Village's future by assessing the community's existing conditions, vision for the future and opportunities for growth.
- Recently, 2 public hearings by the Plan Commission were held to review a draft of the Plan.
 - **Dec. 10** Reviewed first half: covered a range of topics including residential area policies, commercial area policies, housing diversity, potential development sites, building heights in the downtown and parking ratios for new development.
 - **Jan. 7** Reviewed second half: covered topics including include transportation, community facilities, parks and open space and plan implementation.
 - **Next Steps:** 3rd public hearing to be held February 25, 2021. During this meeting, the finalized document will be presented, incorporating any feedback received from the Plan Commission and the public. Expected to go before the Village Board at a Workshop in March.



VILLAGE OF GLEN ELLYN

COMPREHENSIVE PLAN

DRAFT FOR PUBLIC OPEN HOUSE | NOVEMBER 2020 | PREPARED BY HOUSEAL LAVIGNE WITH ASSISTANCE FROM KLOA



GLEN ELLYN DEI PROJECT

- ✓ 2021 Glen Ellyn Diversity, Equity and Inclusion (DEI) Project.
- ✓ Provide a format for the residents of Glen Ellyn to learn more about the Diversity, Equity and Inclusion activities taking place in the community and then to participate in open, facilitated conversations regarding their thoughts and ideas
- ✓ Public invited to join panel discussions on January 23 and Affinity Group Meetings on January 28



GLEN ELLYN DEI PROJECT

DIVERSITY • EQUITY • INCLUSION

2021

✓ Upcoming Events

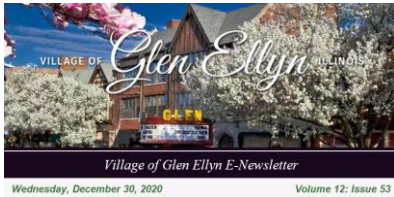
- Winter Pop Up Plaza-Ice Rink in partnership with the Park District (TBD)
- Frida Kahlo Timeless Exhibit (June 5 – September 6, 2021)

✓ Board Initiatives

- Public Art Initiative with COD
- Community Grant Program with DuPage Foundation
- Housing Work Group: Access Affordable/Workforce/Age in Place Housing
- PD Assessment and Staffing Study
- Recreational Cannabis Differed to July 1, 2021
- McKee House

✓ Village Board Transition

STAY CONNECTED WITH THE VILLAGE



- **Weekly E-Newsletter** sign-up online at www.glenellyn.org/enews

- **Social Media Channels**

- **Village:** Facebook, Twitter, Instagram
- **Police:** Facebook, Twitter



- **Website** www.glenellyn.org
 - **Notify Me** www.glenellyn.org/notifyme: sign-up to receive alerts (via email or text) on topics of interest to you.
 - **Emergency Alerting System:** www.glenellyn.org/alert sign-up to receive critical emergency information.
- **Radio Station** When the situation warrants, emergency information can be heard on AM 1620 KHz.

VILLAGE OF *Glen Ellyn* ILLINOIS

QUESTIONS?



535 DUANE STREET • GLEN ELLYN, IL 60137



630.469.5000 • WWW.GLENELLYN.ORG