

Carlson Machine Control for Quarries



Carlson MC-8/MC-10

- Full daylight readable screen
- Wide operating temperature range
- IP65 rating
- Highly ruggedized and lightweight
- Convenient 8" and 10" profiles



Learn more: www.carlsonmachinecontrol.com
or contact at: info@carlsonmachinecontrol.com



Experts in Machine Control Applications since 1996

- Mining ■ Landfill ■ Quarries
- Dredging ■ Construction
- Contract Drilling ■ Piling
- Custom Applications

Powerful Easy To Use Carlson Grade Software & Hardware for Loaders, Excavators, Shovels, Drills & Trucks

- Consistent user interface across all solutions
- Flexible and easy to use interface
- Multiple view options available in profile, section and plan
- Directly import from open CAD and Carlson plat-forms
- DWG, DXF, TN3, GC3, LN3, TIN, GRD
- Track machine utilization, downs and delays
- Track fleet production
- NTRIP and VRS compatible
- Able to handle large surface files
- Real-time machine system viewing and troubleshooting capability from anywhere in the world
- Peer to peer communication and information sharing capability between all machines in the field
- Works as a stand alone system or as part of a fleet environment with multiple machines

Benefits of Carlson Grade for Loaders, Excavators and Shovels

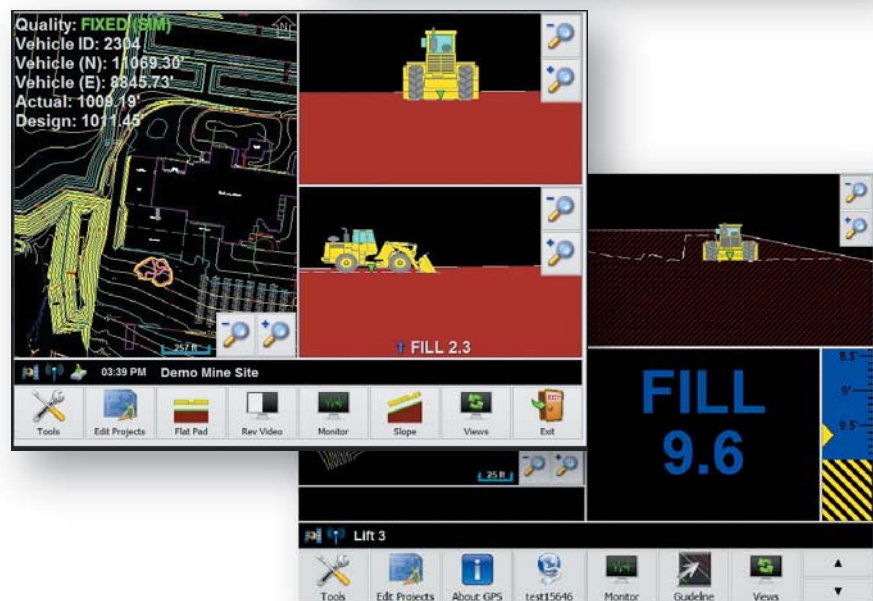
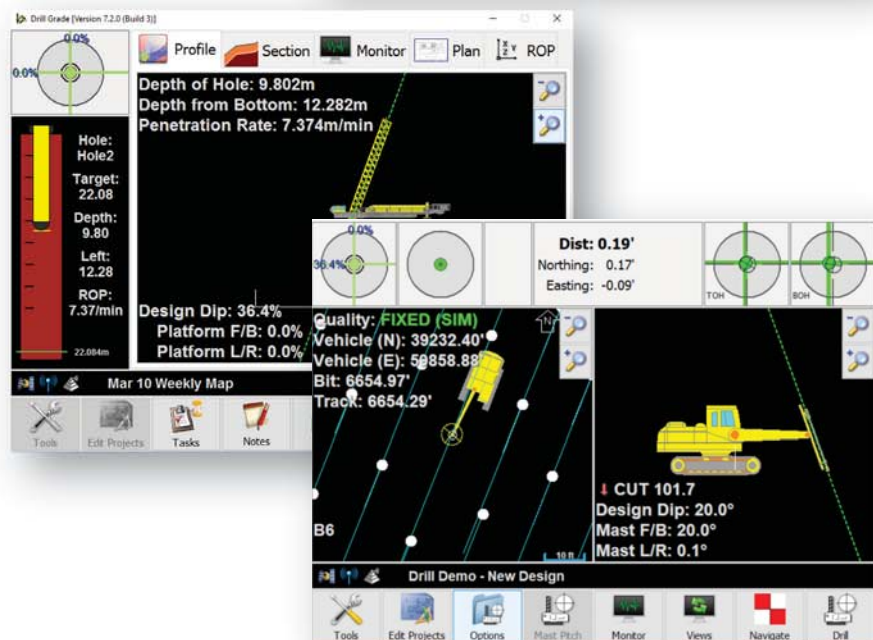
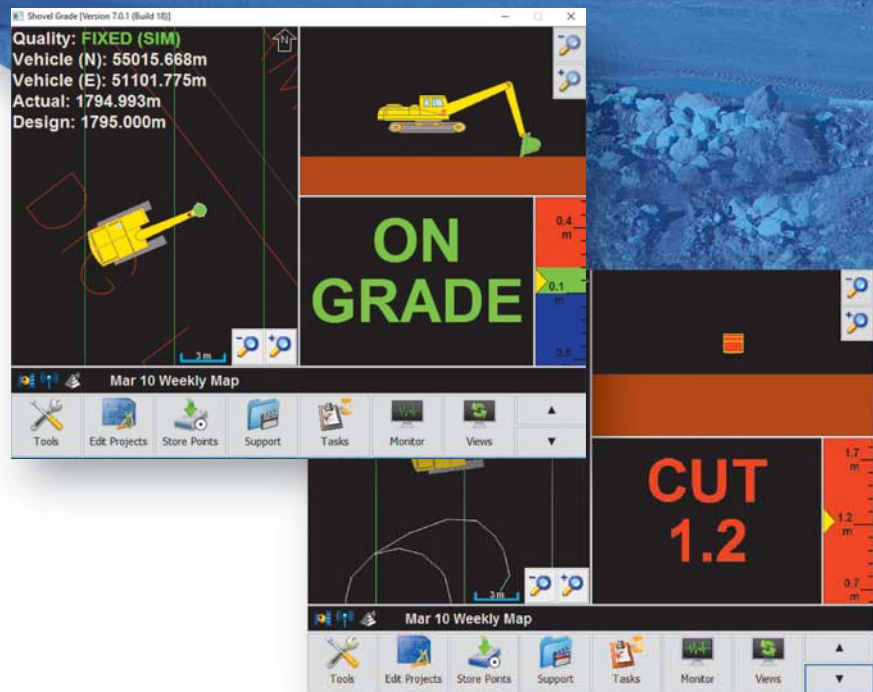
- Build to design for better highwall construction and proper bench elevation
- Dig to design utilizing surfaces or block models
- Real-time cut/fill/on-grade to multiple design surfaces
- Track operator ID's and pre-start checks
- Accurately build to elevation offsets
- Update surfaces and cut/fill color map real time across the entire project
- Track single or multiple points

Carlson Grade Drill Benefits

- Operator drill pattern layout in field
- Navigate to hole more accurately
- Drill to elevation or depth with accuracy
- Interface to various equipment on-board systems
- Atlas Copco - FlexiRoc, SmartRoc, T30
- Sandvik - TIM 6700• BBURG Drill Interface
- Multiple tag holes to provide more information to the blasters

Carlson Grade Safety Benefits

- Increase operator situational awareness through proximity warnings between machines and fixed assets
- Increase operator awareness by utilizing 2D and 3D watch zones and warning zones
- Increase safety for surveyors and engineers by reducing survey time in the field





Effective Construction Grade Management with Carlson Grade Supervisor

- Designed specifically for site supervisors, inspectors and grade checkers, Carlson Grade Supervisor offers affordable and easy-to-use software for day-to-day surface and grade management tasks. Grade Supervisor works either on the pole or in a vehicle, moving seamlessly from man rover (GPS pole) to monitor rover (pickup/ATV).
- Simple to learn and to use, Carlson Grade Supervisor provides direct import of .dwg files, .dxf files, and machine control files, including tn3, gc3, ln3, grd, tin, and more “no desktop software” required. Supervisors can get daily, weekly, or anytime volumes, track real-time cut/fill, plus ability to collect and stake points.
- NTRIP-compatibility with most networks, which eliminates the need for a separate base station and represents a substantial savings.
- Ability to manage layers
- In-field, 3D Volume Calcs with PDF graphical report output

You can purchase
Carlson Grade
Supervisor on top of
Carlson's RT3 Tablet,
a light, rugged tablet
PC, and the Carlson
BRx6+ receiver.

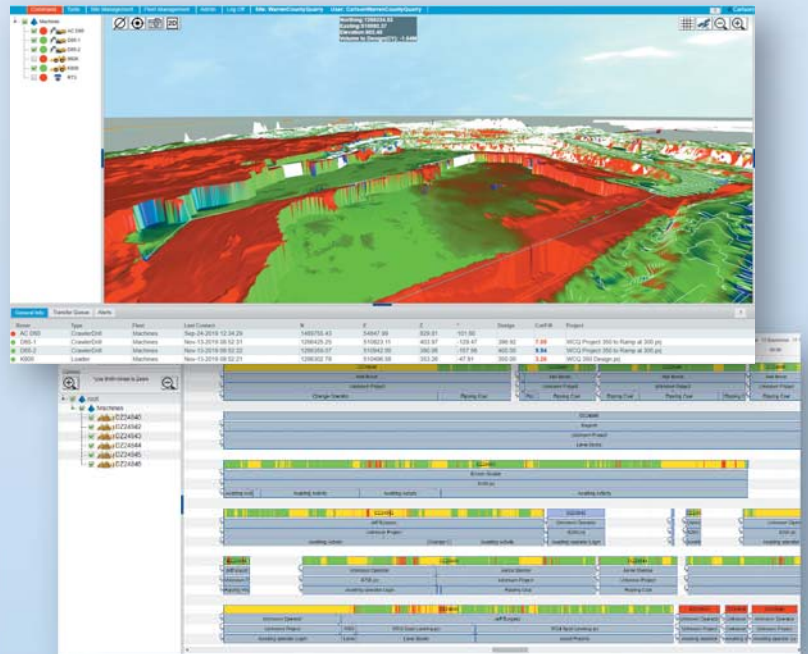


Carlson Machine Control

Carlson Command

In the office or remote location

- Efficiency reports
- Daily work area reports
- Real-time Cut/Fill color map of the site in your office
- Replay machine movements
- Manage machine files
- Machine timeline views



Advanced Carlson Technology For The Total Project

Carlson Quarryman® Pro

The Carlson Quarryman Pro is the 3D laser-scanning system of choice for quarries around the world. It is intuitive to use, portable and rugged, and carefully designed and tested to make it robust enough to operate in the toughest environments.



Carlson Blast Commander Software

Analyze, Design, and Edit your Blasts. Utilize point clouds, meshes, and borehole deviation information for blast optimization. Carlson Blast Commander delivers information essential to drilling & blasting. Drilling information can be sent via Carlson Command for drill rig guidance, which can return updates to the office for a field-to-finish process.



Rodded Boretrak® and Cabled Boretrak®

The Carlson Boretrak measurement system measures borehole deviation in a wide range of applications, including quarrying, mining, geotechnical, and engineering works.

- Works reliably in extreme environments
- Increases work efficiency
- Improve safety



© Copyright 2020 Carlson Software, Inc. All rights reserved. Carlson Software is a registered trademark of Carlson Software, Inc. All other product names or trademarks belong to their respective holders.

Carlson Software Inc.
33 East 2nd Street
Maysville, KY 41056, USA
800-989-5028 ■ 606-564-5028
www.carlsonsw.com

