



Score on Strokes!

By Erin Pace

June 29th, 2019 | The Little Rock Rangers soccer team was not the only team scoring at Saturday night's game! The UAMS Institute for Digital Health & Innovation Stroke Program (telestroke) also scored big that night. The telestroke team rounded up individuals to educate them on the signs and symptoms of a stroke.

They also brought their "Save the Brain" game that was a huge success, with people of all ages lined up to play. In order to "save the brain," someone must flush a blood clot out of the brain with medicine, and then retrieve the remaining clot with a special tool. By the end of the night, they had "saved" over 100 brains. The telestroke team also handed out close to 1,000 fans that explained signs and symptoms of stroke. Education is key to this team, and they want individuals to not only be able to recognize a stroke, but also be aware that they can receive treatment at their local hospitals throughout the state. It was a win for the Rangers, scoring goals all night, and a win for the telestroke team, scoring on strokes!



Message from Dr. Lowery

Dear Readers,

I'm honored to introduce our first newsletter for the UAMS Institute for Digital Health & Innovation (IDHI). Many of you might be wondering, "What is IDHI?" Our work began in 2003 with the IDHI OB Program, previously known as ANGELS, and has expanded through the years through the Center for Distance Health to include other award-winning telehealth programs in disciplines ranging from neurology to school-based health. IDHI formed in early 2019 when it adopted our existing telemedicine programs, along with a new vision of new digital health solutions for UAMS and Arkansas. Despite a busy year of changes, IDHI has already made great strides toward improving healthcare in our state. One of the first direct to consumer impacts the IDHI is helping to implement will be healthcare visits through cell phone video conferencing. This should be in full swing in the coming months. This issue covers some of the far-reaching activities we have undertaken, including our stroke program, which continues to raise awareness on the signs and symptoms of stroke and our maternal mortality program, which addresses

maternal and infant outcomes through outreach and maternal safety bundle implementation. Additionally, this issue will also cover basics about telehealth and information about some of our upcoming events.

Looking to the future, IDHI will create new programs that address digital health interests such as mHealth, predictive modeling, artificial intelligence, and expansion to in-home healthcare. Some of these proposed programs include initiatives for customizable, web-based telemedicine platforms for rural hospitals and clinics; emergency department triage and management for potential patient transfers; and digital health training for UAMS' specialists and physicians.

Stayed tuned for DigiHealth updates about our exciting journey!

Sincerely,

Curtis Lowery, MD

Director, UAMS Institute for Digital Health & Innovation
University of Arkansas for Medical Sciences

The UAMS e-Link staff has grown, so we thought the inaugural issue of the IDHI newsletter should include an updated team photo.

Beginning on the back row from the left is Mitchel Strack, Program Manager; Caroline Cody, Program Manager; Britt Runion, Program Manager; Bonnie Whaley, Program Manager; Martin Maize, Program Manager; Boyce Mitchell, Program Manager; Teague Johnson, Telemedicine Specialist Manager; Brenda Pick, Senior Project Manager; Roy Kitchen, Associate Administrator of Patient Care; Michael Wallace, Senior Project Manager and Kelley Cooper, Program Manager.

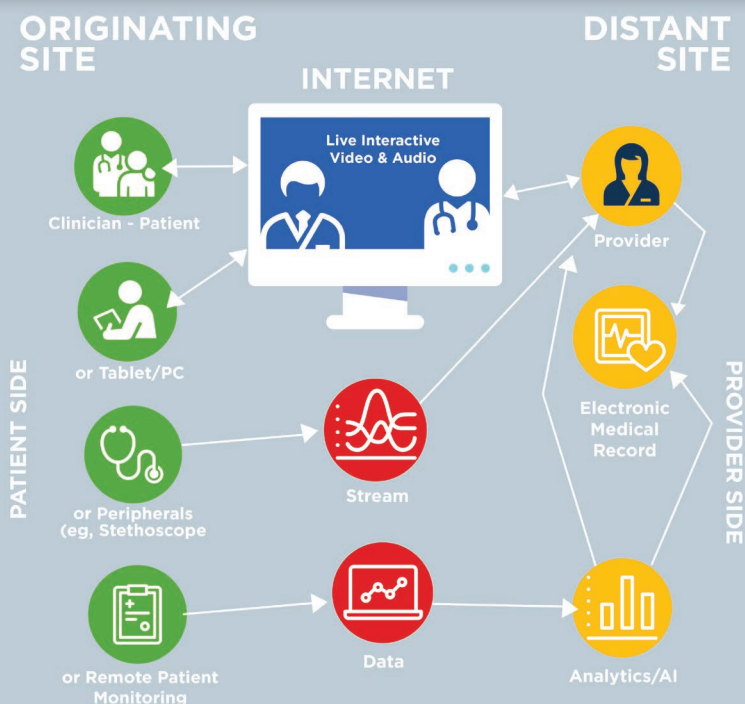
Not pictured: Alyssa Robinson, RN, Program Manager



By 2029, UAMS will lead Arkansas to be the healthiest state in the region through education, clinical care, research and purposeful leadership. UAMS resolved that in the coming decade its status as Arkansas' only academic health system will allow it to deliver dramatic and lasting health and health care improvements to its home state. Its statewide network of campuses will provide public education and clinical outreach.

Professionals in medical specialties, population health, digital health, health informatics and translational research will additionally support this vision. The newly named Institute for Digital Health & Innovation plays a major part in the Vision 2029 strategic plan. Read about this daring blueprint beginning on page 51 of the July 2019 Vision 2029 report.

Telehealth at a glance



Telehealth is the use of telecommunication and technology that allow patients and providers access to each other at different locations and perhaps at different times, though often in real-time. The originating site is where the patient is located and the distant site is where the provider or specialist is located. Sometimes the patient visits a clinic for an appointment with a clinician through a telecart, and sometimes a patient can access the provider through a tablet or PC. Information can also be conveyed through remote patient monitoring or through other devices such as stethoscopes, where data is recorded, stored, and/or streamed. The provider is able to view the live, interactive audio/video or possibly access it at a different time. The provider is also able to access electronic medical records, analytics, and other data through information captured during the patient's telehealth session.

IDHI Newsletter for Outreach Education /POET Team

Telehealth at a glance

Continued from page 2

The UAMS Institute for Digital Health & Innovation (IDHI) formed an OB program for perinatal outcomes in 2017 to improve these outcomes in Arkansas. IDHI employs medical and program directors, physicians, APRNs, RNs, researchers, educators, and instructional, telemedicine, and technology specialists to implement this program, one of 10 system models of care developed by IDHI in the past 15 years.

The perinatal outcomes program provides services that assist Arkansas' 39 delivering hospitals in implementing maternal safety bundles. Safety bundles are evidence-based guidelines that are adapted for local circumstances to optimally manage a medical condition and thus improve patient outcomes (Bernstein et al, 2017. p. 776). In order to serve the 39 delivering hospitals, the state is divided into five regional areas and each area is assigned a Power Outreach Education Team (POET) facilitator. Each POET facilitator meets quarterly with their assigned areas to facilitate implementation of safety bundles as well as coordinate multidisciplinary education in various platforms such as:

- live education sessions,
- interactive video meetings,
- workshops,
- simulations, and
- telemedicine opportunities.

This initiative has assisted hospitals in implementing postpartum hemorrhage and maternal hypertensive emergency safety bundles. We introduced "reduction of peripartum racial/ethnic disparities" as our newest safety bundle during our annual workshop in April 2019. The workshop is well received and appreciated as evidenced by attendee's reviews: "First, just wanted to say how much I loved the...conference! It is always so inspiring & refreshing. Thank you for all the hard work you ladies put into helping our state work together."

UAMS IDHI also provides educational/social platforms for networking and assistance with bundle implementation. Our Facebook page is the platform we use to encourage questions and discussions. Our site visits are also designed to provide education, simulation, and support.

What is telehealth?

Telehealth is the use of electronic technology to provide health care and services to a patient when the provider is in a different location.

How is telehealth accomplished?

Live (or Video conferencing) – provision of a live exchange via interactive, real-time audio and video technology.

Store and forward –electronic transmission of medical information via secure transmission that is accessed at a later time, in a different location.

Remote patient monitoring – collection of data from individuals in one location that is electronically transmitted to a clinician for assessment.

Mobile health (mHealth) – provision of health care services and personal health data via mobile devices.

Source – center for connected health policy

Learn on Demand Module

Maternal Mortality in Arkansas

Healthcare providers may not have access to the latest management recommendations for Maternal Mortality in Arkansas.

[https://learnondemand.org/lms/activity?
@activity.id=6611792](https://learnondemand.org/lms/activity?@activity.id=6611792)

Making the Case for Maternal Safety Bundles

The purpose of this activity is to educate healthcare providers with the most up-to-date information on current management recommendations for maternal safety bundles.

[https://learnondemand.org/lms/activity?
@activity.id=5586815](https://learnondemand.org/lms/activity?@activity.id=5586815)





Institute for Digital
Health & Innovation

4301 W. Markham St., #577
Little Rock, AR 72205-7199

Upcoming events



2019 ANNUAL SICKLE CELL SYMPOSIUM Sickle Cell: Past, Present and Future

By Future Builders Inc., Arkansas Black Nurses Association and Facilitated by UAMS Adult Sickle Cell Clinical Program

Agenda

Tuesday, September 17, 2019

UAMS Jack T. Stephens Spine & Neurosciences Institute, 12th Floor



— NATIONAL — TELEHEALTH RESEARCH SYMPOSIUM

2 0 1 9

September 11-13 | Chicago, IL | Ann & Robert H. Lurie Children's Hospital

Keep on the Lookout for:

Core competencies

The Association of American Medical Colleges' (AAMC) national telehealth committee of experts, including Dr. Lowery, are developing a framework of domains and skills needed by clinicians to provide patient care via telehealth. The competencies will be useful as provider education is developed and disseminated in medical schools across the country. The AAMC Telehealth Competencies will be used as a framework to guide telehealth implementation as curricula for medicine, nursing and other health care disciplines. The curriculum will offer training at the basic, intermediate and advanced levels to assure the highest level of care using telehealth.

EAP via Telehealth

Components of the UAMS Employee Assistance Program will soon be available via telehealth!

► **STAY TUNED!**

We want to know your use or intended use of digital health technologies. Please take our survey located [HERE](#).

idhi.uams.edu