



# The Springfield Country Club



2022 Non-Resident Tandem Membership

# SCC 2022 Non-Resident Tandem Membership

**SCC Non-Resident Tandem Membership** provides unlimited access to all Club facilities and amenities including our 18 hole golf course (full golfing privileges for primary member only-see below for additional golfing fees), driving range, pool and pavilion complex, tennis courts, golf tournaments, as well as all Clubhouse dining, banquet facilities, and all social activities. In addition, Non-Resident Tandem Members can host and sponsor private events at the Club.

**New Non-Resident Tandem Member Initiation Fee: \$1,000 (Can be paid in 2 installments)**

**Monthly Dues: \$208. for Non-Resident Tandem Membership plus capital fund fee of \$24.00 per month**

- Non-Resident Member Initiation Fee can be paid in 2 installments within the first 6 months.
- Non-Resident Tandem Memberships are based on 1 golfer, see additional prices for more options.
- Non-Resident Membership is defined by member who **DOES NOT** maintain a residence within 25 miles of the Club, based by Mapquest's shortest calculated distance.
- New SCC Non-Resident Tandem Members can Tandem with a current SCC Member or join with a New Tandem Member. There are no food minimums for Non-Resident Tandem Members.
- Dependent Children (Children age 26 & younger, living at home and claimed on 1040 federal tax form) are included in Member's Membership at no additional cost.
- All Non-Resident Members are charged a \$24.00 **Monthly Capital Fund Fee**, Billed Monthly.
- Non-Resident Tandem Memberships include: Unlimited golf for 1 person, All household family members may utilize with Club Dining Facilities, Social Events, Swimming, Tennis, Driving Range.
- Optional Items Includes: Lockers, Bag Slots, Men's and Women's Golf Associations, Handicap System, Pro Golf Shop, Lessons for Golf, Swim and Tennis.
- All Members have the privilege of hosting private and business events utilizing the Springfield Country Club Facilities.

## Additional Rates and Information:

**Non-Resident Tandem Members can add Golf Privileges for Spouse / S.O.**

\$300.00 per year, Billed Annually in March

**Children under age 17, for free.**

**Children age 17-26, for \$240.00, Billed Annually in March.**

## Annual Locker Rental & Shoe Care, Bag Slot Options

**Basic Shoe Care Is Included in Locker Fee, Spikes are Additional**

**Men's Full Locker:** \$120.00 per year, Billed Annually in April.

**Men's 1/2 Locker:** \$90.00 per year, Billed Annually in April.

**Women's Full Locker:** \$50.00 per year, Billed Annually in April.

**Women's 1/2 Locker:** \$25.00 per year, Billed Annually in April.

**Annual Bag Slot:** \$100.00 per year, Billed Annually in April.

**Golf Cart Rental:** \$20. per use for 18 holes **Golf**

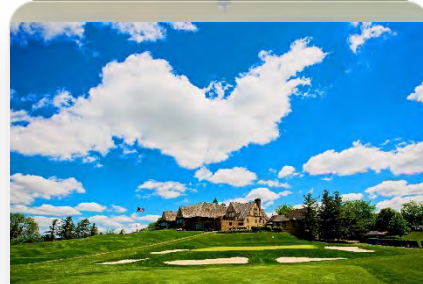
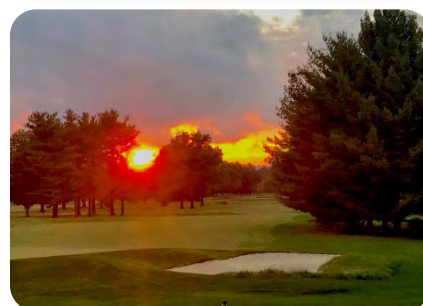
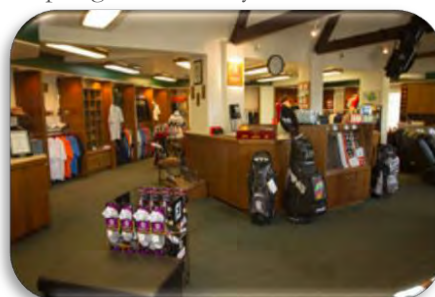
**Cart Rental:** \$10. per use for 9 holes **Golf**

**Trolley Rental:** \$6.00 per use for 18 holes **Golf**

**Trolley Rental:** \$4.00 per use for 9 holes

**For More Info Call (937) 399-4215**

[www.Springfieldccoh.org](http://www.Springfieldccoh.org)



**Note:**

**Sales Tax will be added when applicable.**

**All Rates Are Subject To Change.**

**All prospective new and former SCC Members Must Select a Tandem partner, complete an Invitation for Membership and submit 2 letters of Sponsorship by current SCC Members, followed by Club posting and Board approval process.**