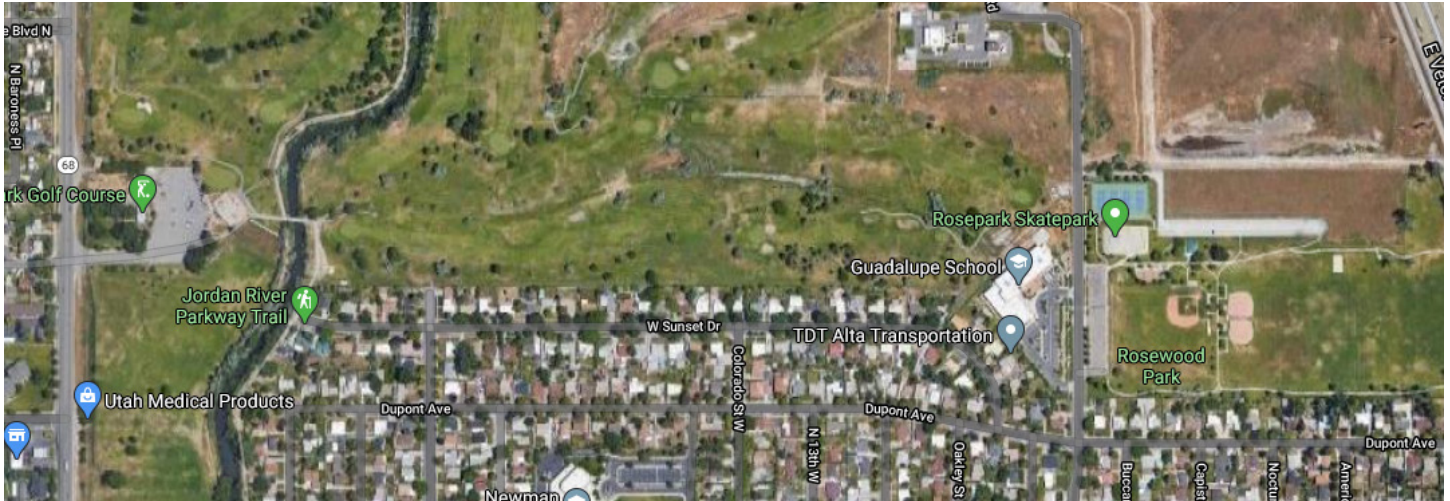


# Rose Park Golf Course

## Multi-Use Trails



### Project Details

**Address:** Rose Park Golf Course and vicinity.  
Approximately 1386 N Redwood Road.

**Funding Amount/Source:**

\$343,500/Capital Improvement Program

**Current Phase:** Design

**Anticipated Start Date:** August 2020

**Anticipated Completion Date:** December 2020

### Project Benefits

The Jordan River - Rose Park Trails Project would provide the following tangible benefits:

- 1) Provide three new natural surface, multi-use public trails on 200 acres of City open space.
- 2) Provide opportunities for the general public to enjoy outdoor recreation along the perimeter of a public property, while protecting the integrity of the 18-hole golf course and the experience for golfers.
- 3) Effectively connect the Regional Athletic Complex, Redwood Road, the Jordan River Parkway, the golf course, the disc golf course, & Rosewood Park, making substantial improvements to cross-neighborhood connectivity.
- 4) Make the Rose Park clubhouse and its facilities more accessible for the public.

### Project Scope

The Jordan River - Rose Park Trails Project will use the underutilized margins of the Rose Park Golf Course and the Jordan River Roots Disc Golf Course, along with existing paved sections of the Jordan River Parkway Trail, to create two self-contained loop paths around the margins of these public courses and along the Jordan River.

All natural surface trails would originate from a central point located at the Rose Park Golf Course Club House and Cafe, adjacent to the course's large parking lot.

Trail layout will be carefully designed to keep trail users safe and avoid conflicts with active golfers while maximizing neighborhood trail connections (including connections to, Redwood Road, Rosewood Park, Day-Riverside Library, and several areas of the northern Rose Park neighborhood).



**Public Lands**

Parks | Trails & Natural Lands | Urban Forestry

(801) 972-7800 • [parks@slcgov.com](mailto:parks@slcgov.com) • [www.slcparks.com](http://www.slcparks.com)