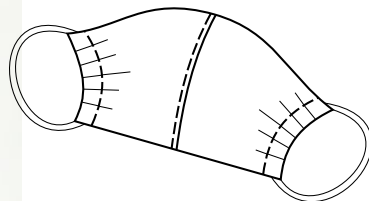


3-D FACE MASK

Free sewing pattern

Due to the COVID-19 crisis, not only many hospitals, but also many people have a lack of face masks.

Please help get as many masks as possible for everyone who needs them!



You can and, moreover, I ask you:

- Freely share these patterns and sew face masks for yourself, your family, and for voluntary purposes as many as you can.

Copyright and limitations:

- You cannot use these patterns and instructions for making face masks for sale!
- You cannot sell these patterns, instructions, or any part of them and/ or use them for any commercial purposes!

Sizes: 3 years - Adult

Fabric: Tightly woven cotton

Skill Level:

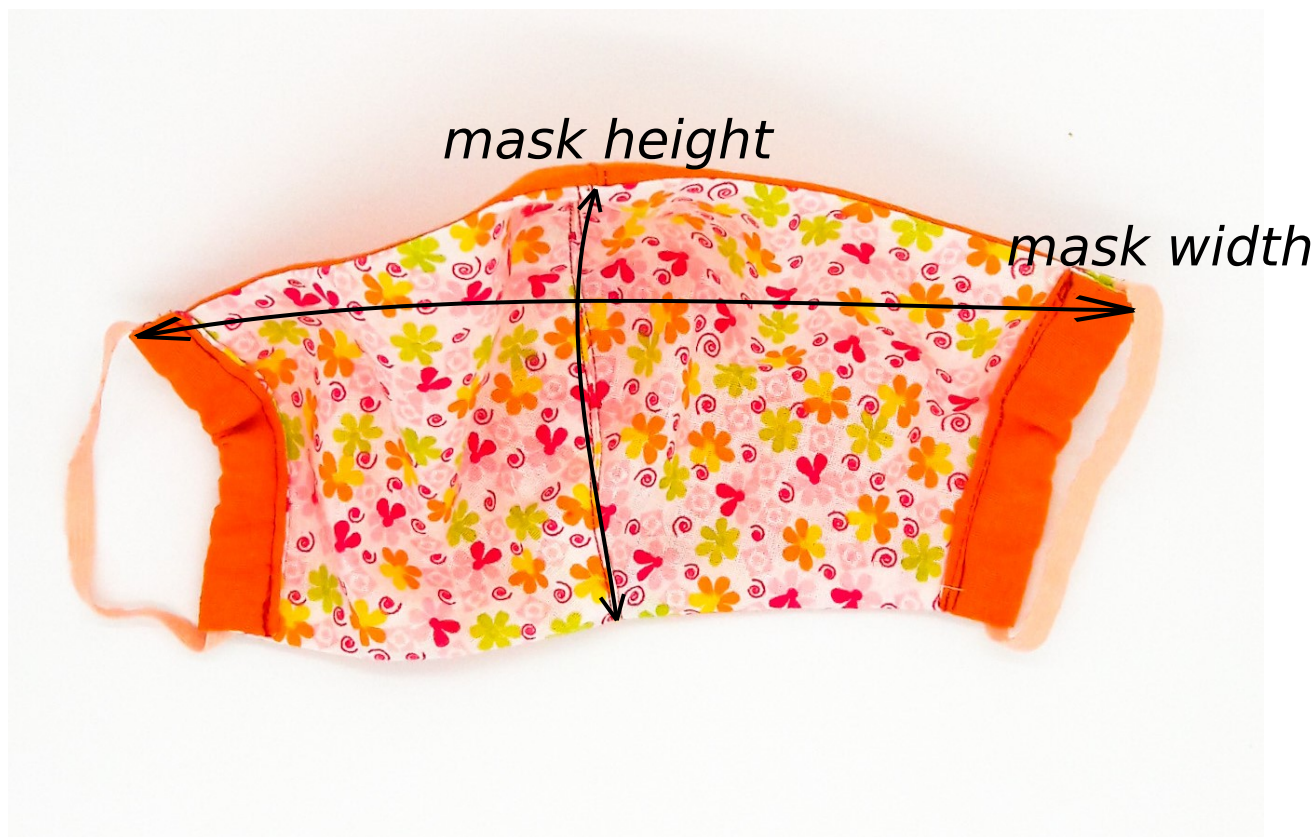


3-D face mask sewing patterns

Full tutorial 'How to sew face mask':

<https://sewish.com/blogs/how-to-sew/how-to-sew-face-mask>

Measuring:



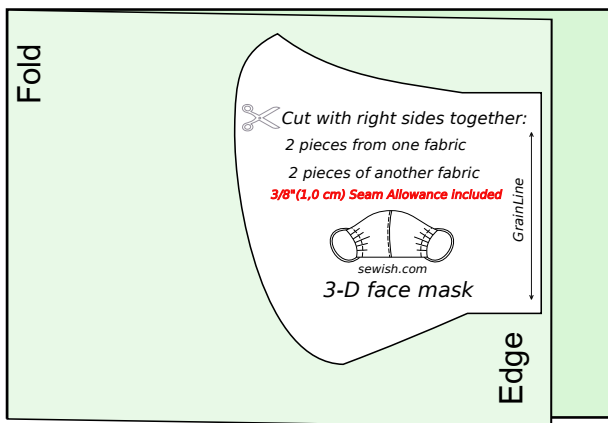
size	mask width	mask height
approx. 3-6 Y	16 cm (6.3")	10.5 cm (4.13")
approx. 7-12 Y	19.5 cm (7.6")	12.5 cm (4.9")
12 Y - Adult S	23 cm (9.05")	14.5 cm (5.71")
Adult M	27 cm (10.63")	16.5 cm (6.5")
Adult L-XL	29.5 cm (11.6")	18.5 cm (7.28")

Fabric: Tightly woven cotton

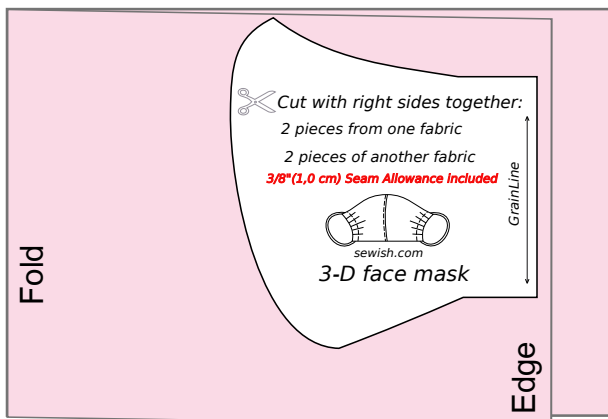
The goal of these masks is to stop droplets and must be washable. So, the fabric must be breathable, without letting droplets through.

Cutting Layout:

Main fabric - cut 2 pieces



Lining fabric - cut 2 pieces



Sewing machine and Tools:

1. Regular sewing machine.

You can sew this mask even manually :)

2. Scissors, Pins, Elastic or Ribbon, Fabric

3-D face mask sewing patterns

Full tutorial 'How to sew face mask':

<https://sewish.com/blogs/how-to-sew/how-to-sew-face-mask>

NB! Sizes for children are very approximate.

Adult **L - XL**

Adult **M**

12 Y - Adult **S**

7 - 12 YEARS

3 - 6 YEARS

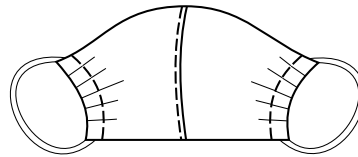


Cut with right sides together:

2 pieces from one fabric

2 pieces of another fabric

3/8"(1,0 cm) Seam Allowance included



sewish.com

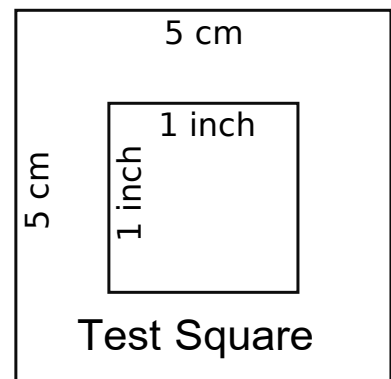
3-D face mask

GrainLine

NOTE!

Print out the template pages at 100% - without scaling or fitting the pages.

While sending patterns to print: if there is an option "Allow application to change print settings" in the settings of printer - **uncheck** the box.



Sewing Instruction - 3-D face mask



1.

Cut 2 pieces from main fabric,
2 pieces of lining fabric.

2.



Lay pieces right side together and join
center seam - stitch along the curved part.

3.



Cut the seam allowance as it's shown
in the photo.

4.



Optional: Press center seams. It will only
make your mask look better.

5.



Place the outer fabric on the inner fabric
of the right side together,
line up the edges and pin them.

6.



Sew the seams around.
Left one narrow side of the mask open.

Sewing Instruction - 3-D face mask

7.



Cut the seam allowance at the corners as shown in the photo.

8.



Flip your mask inside out so that the correct side of the fabric is facing outwards. Iron the mask a bit to make it look better.

9.



Close the open side of the mask: neatly tuck the seam allowance inside, press and stitch near the edge.

10.



Optional: To give the mask and lining extra stability you can edge-stitch around the entire mask.

11.



Fold the edges of the mask onto the lining side by 1.5-1.7 cm (0.6-0.7 ") and sew.

12.



Push the elastic into the seams. Use an elastic band 25-30 cm (10-11.8") long.

Sewing Instruction - 3-D face mask

13.



Adjust the length of the elastic that suits you by tying a knot on it. And push the knot inside the seam.

14.



My congratulations!
You have made a 3-D face mask!
Do not stop! Sew face masks for your family, for your friends, and even, if necessary, for doctors and healthcare providers.

Now you can decorate your mask as you want :)



Be healthy and stylish!