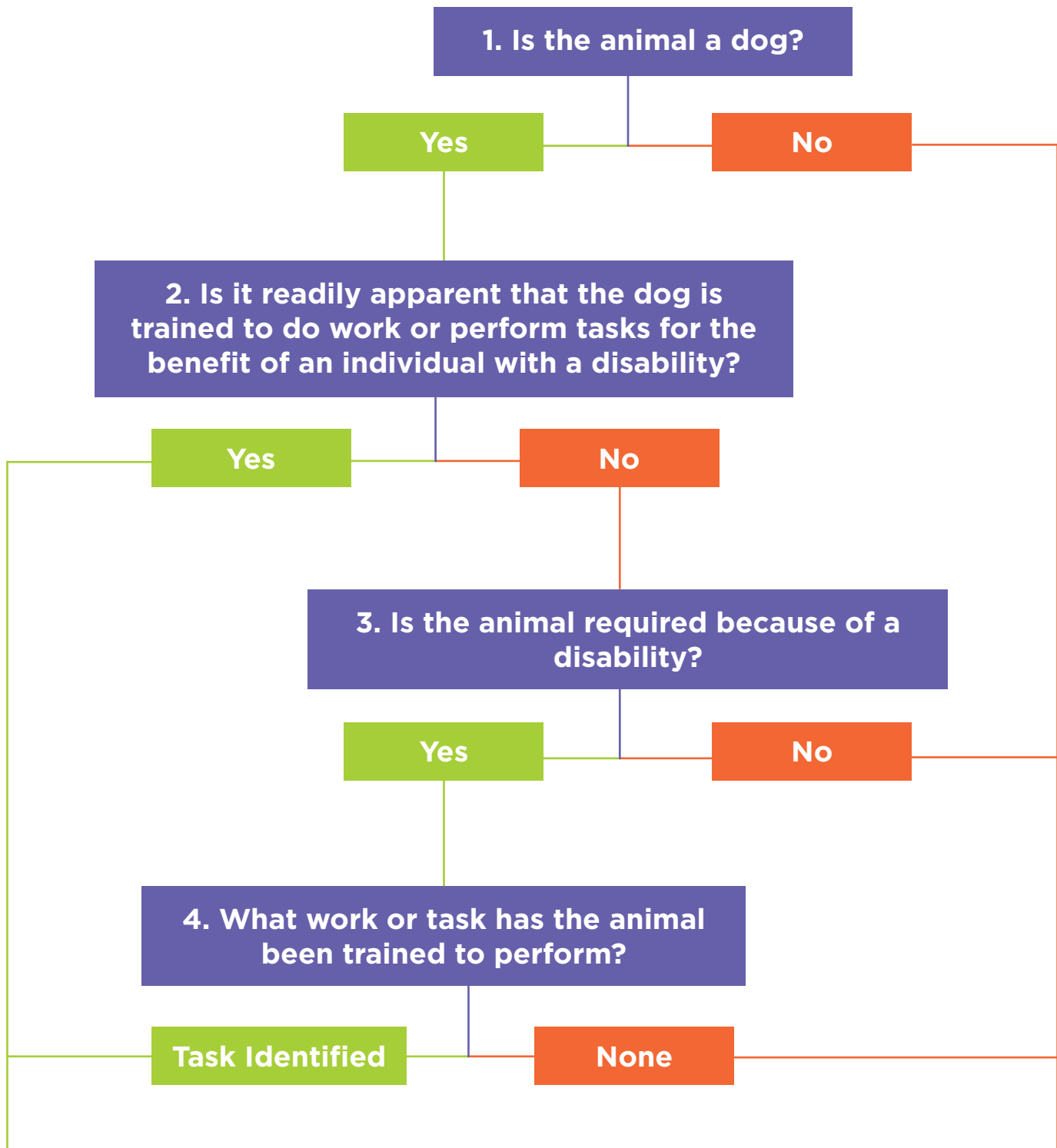


# ASSESSING A **REASONABLE ACCOMODATION** REQUEST FOR AN ASSISTANCE ANIMAL\*



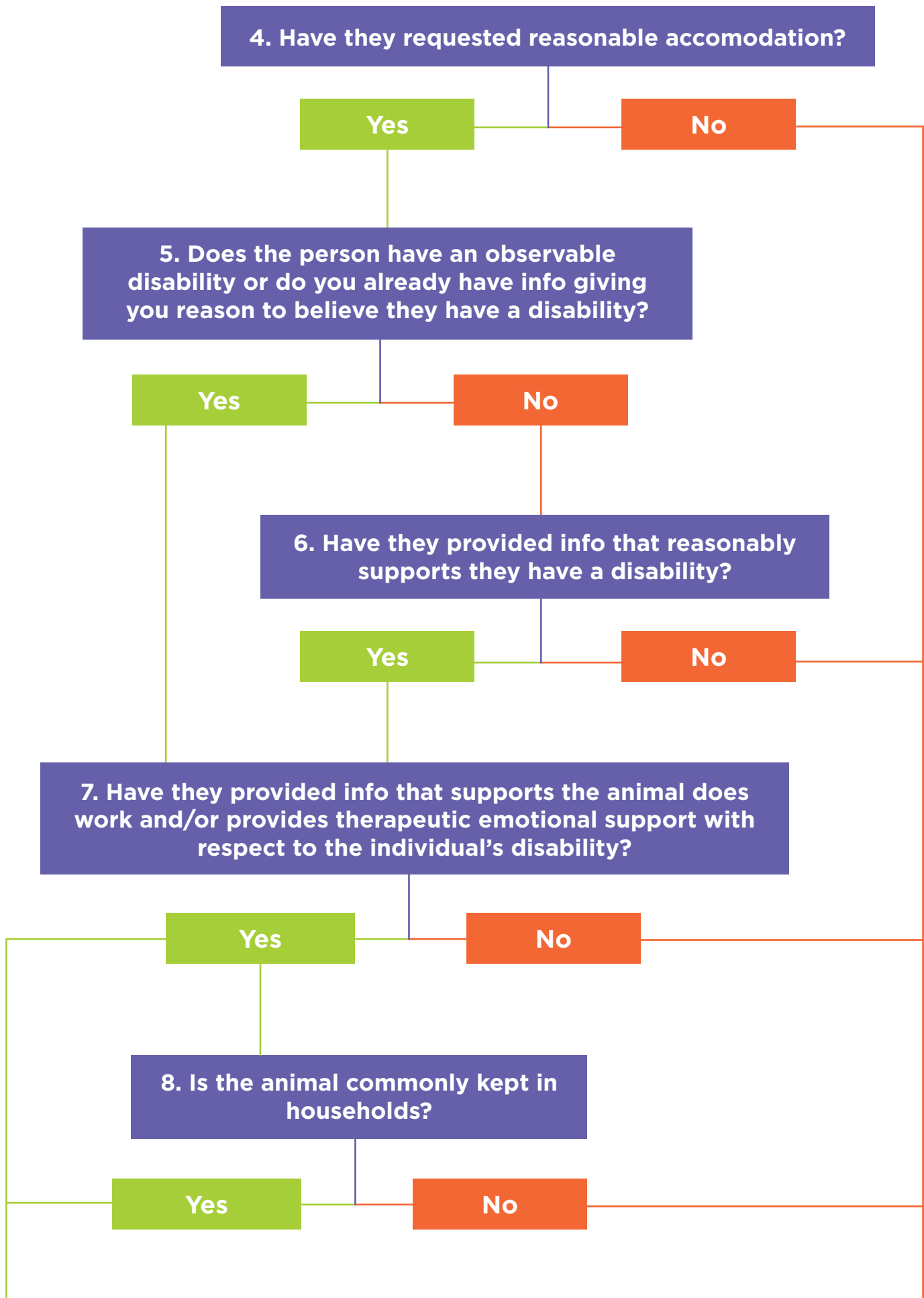
**The animal is a service animal and reasonable accommodations should be made.**

**The animal is not a service animal but reasonable accommodations might still be necessary (Continue to chart #2).**

\*This is not a legal guideline. You should use your own discretion and company policies in addition to this guide when considering requests for reasonable accommodation.



# ASSESSING A **REASONABLE ACCOMODATION** REQUEST FOR AN ASSISTANCE ANIMAL\*



**A reasonable accommodation should be provided under the FHA.**

**A reasonable accommodation is not required to be provided under the FHA.**

\*This is not a legal guideline. You should use your own discretion and company policies in addition to this guide when considering requests for reasonable accommodation.